

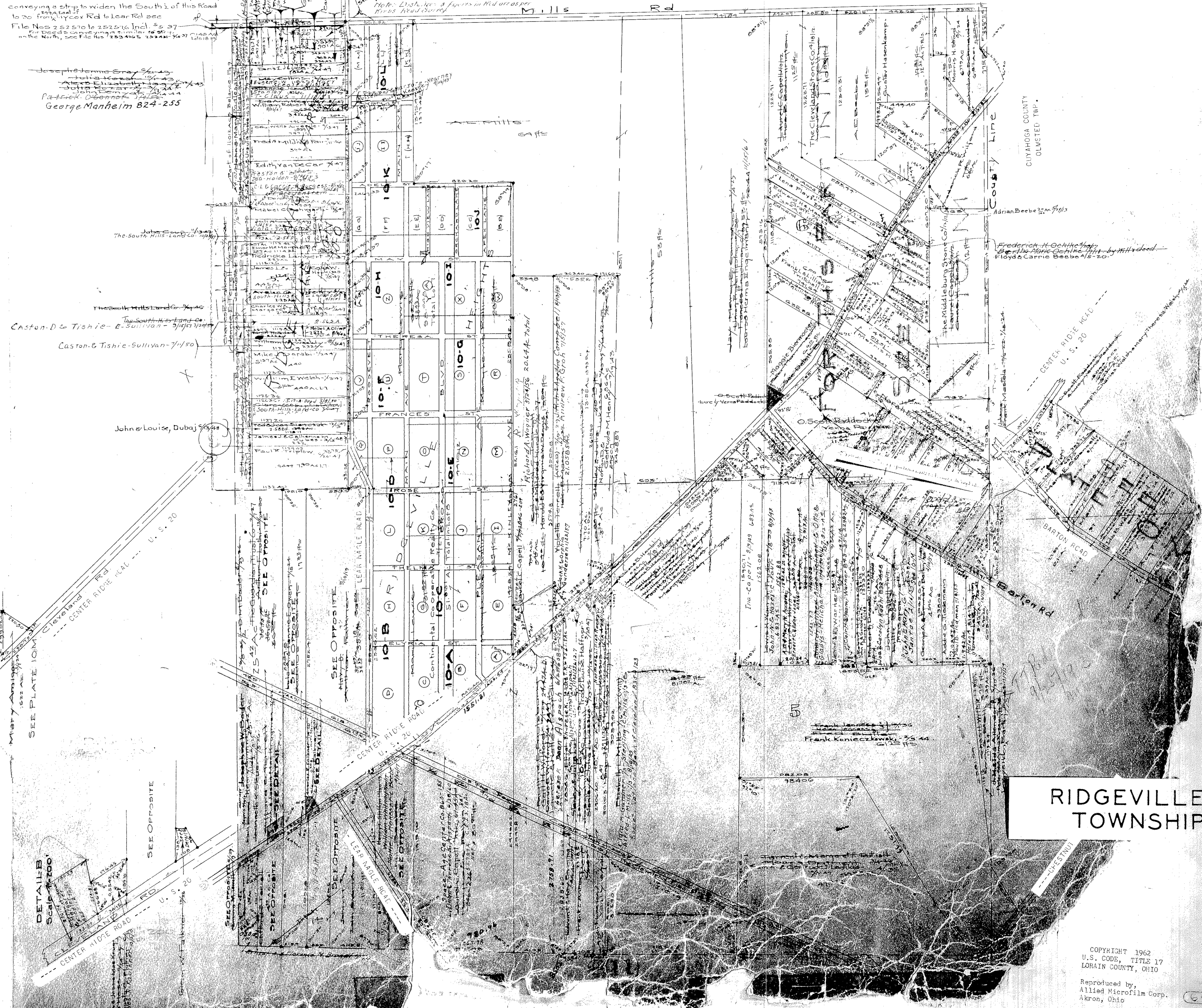
RIDGEVILLE TWP.

North East Corner Scale: 1"=400'

AVON VILLAGE PAGES 34 & 31

For deeds to The Board of Trustees of Ridgeville Twp conveying a strip to widen the South 1/2 of this Road to 30 from 1/2 acre Rd to 1/2 acre see File Nos 252510 to 252516 Incl. #s 37 for Deeds conveying a similar strip on the North, see File Nos 1252416 to 1252421

Joseph & Emma Gray
Julia K...
John...
Patrick...
George Manheim 824-255



RIDGEVILLE TOWNSHIP

COPYRIGHT 1962
U.S. CODE, TITLE 17
LORAIN COUNTY, OHIO

Reproduced by
Allied Microfilm Corp.
Akron, Ohio