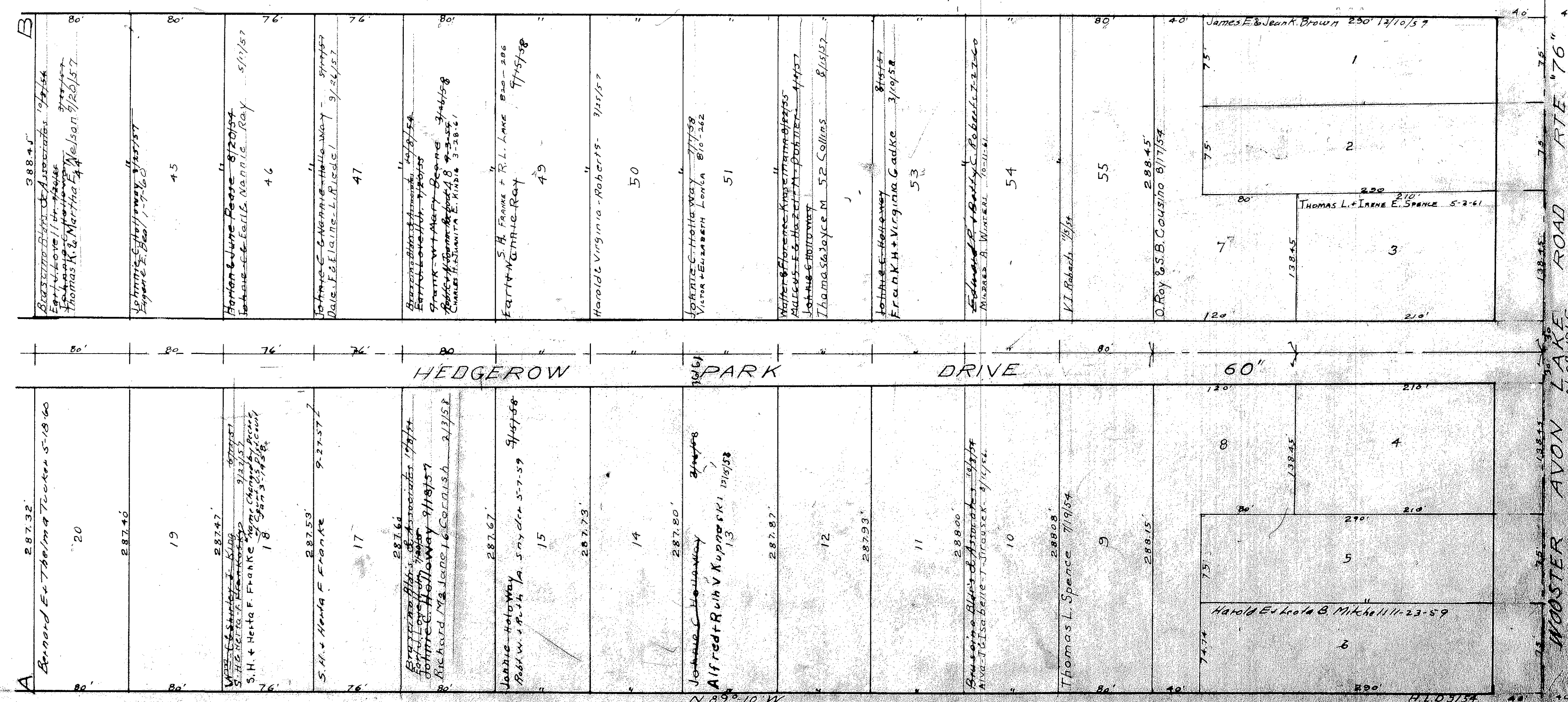
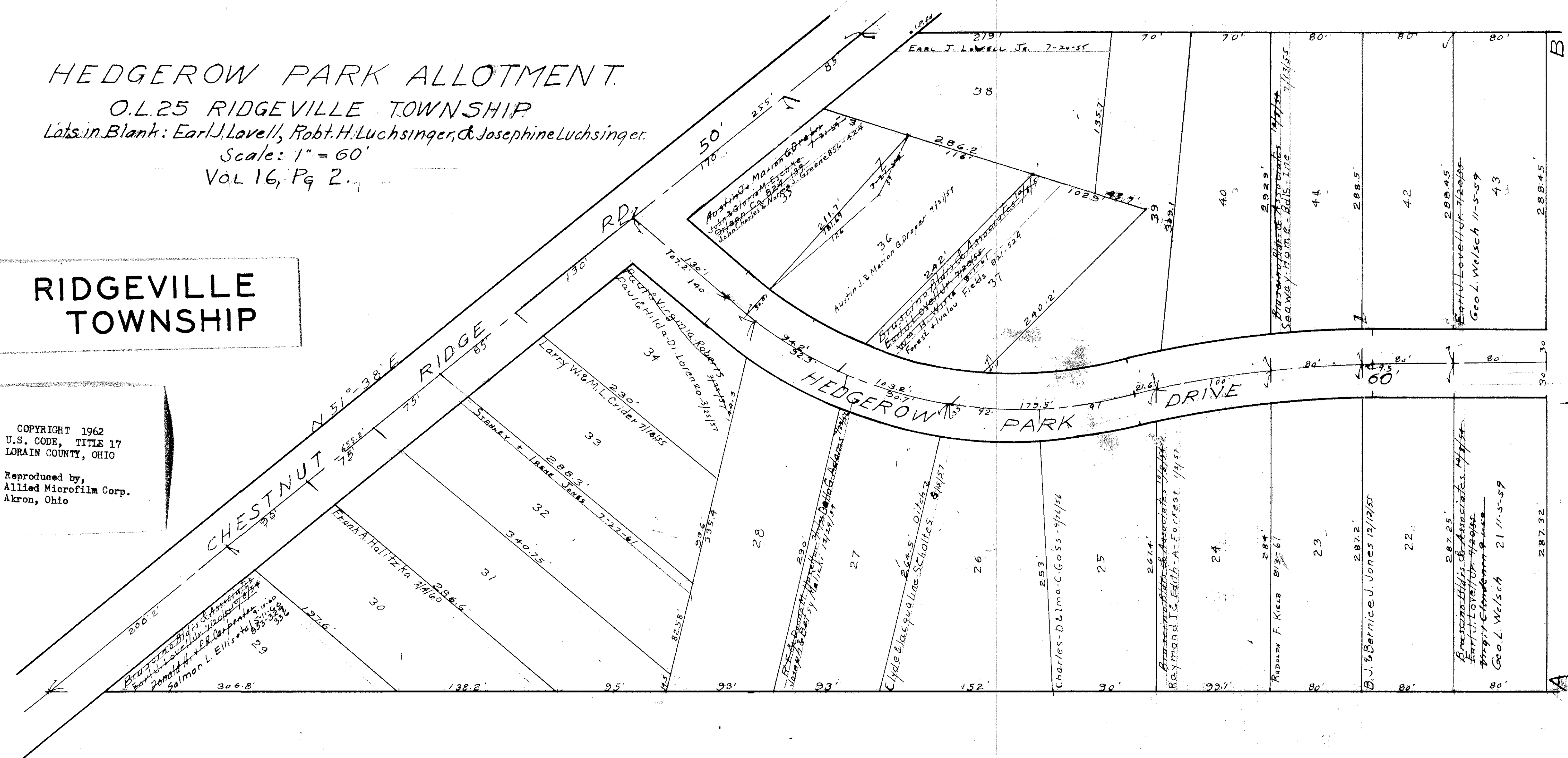


HEDGEROW PARK ALLOTMENT.
O.L.25 RIDGEVILLE TOWNSHIP
Lots in Blank: Earl J. Lovell, Robt. H. Luchsinger, & Josephine Luchsinger.
Scale: 1" = 60'
Vol. 16, Pg. 2.

RIDGEVILLE
TOWNSHIP

COPYRIGHT 1962
U.S. CODE, TITLE 17
LORAIN COUNTY, OHIO
Reproduced by,
Allied Microfilm Corp.
Akron, Ohio



WOOSTER AVON LAKE ROAD
RTE. 76
N 89° 10' W