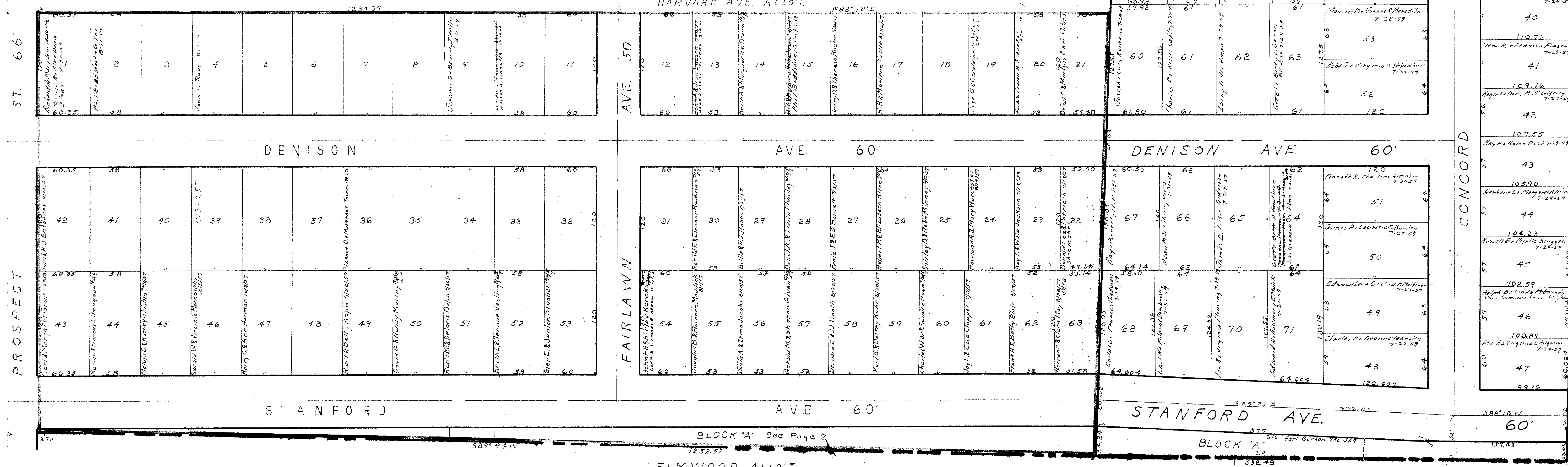


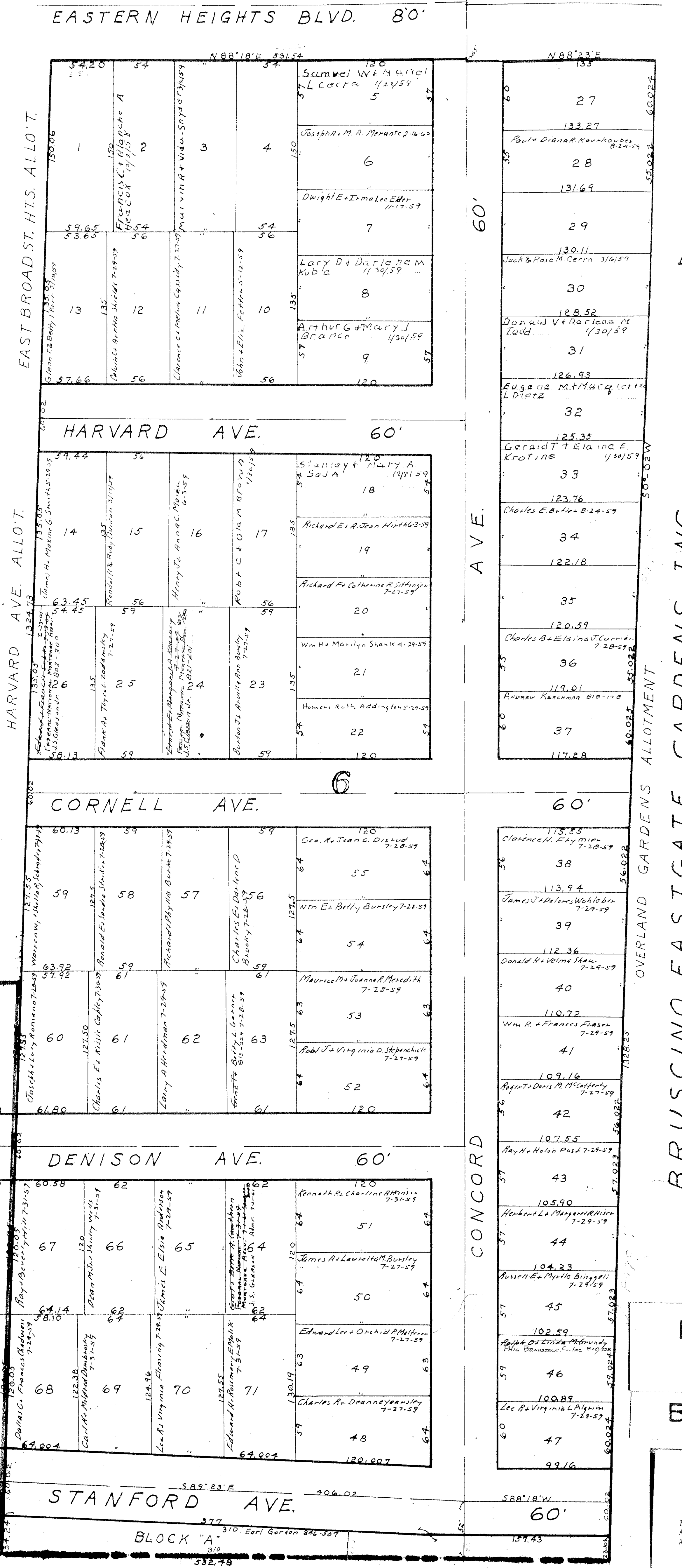
Lots in blank The Expan Construction Co. Inc. Mar. 3, 1932.  
Vol. 13, Pg. 26

**H.A. SHIVES ALLOTMENT NO. 1**  
O.L. 6 EAST OF RIVER Lots in Blank IDEAL HOMES Inc. Vol. 18 Pg. 22



BLOCK "A" See Page 2

ELMWOOD ALLOT.  
See Page 2



**BRUSCINO EASTGATE GARDENS INC.**  
O.L. 6 EAST OF RIVER Lots in Blank Brusino Eastgate Gardens Inc. Vol. 20 Pg. 35

ELYRIA CITY  
BOOK 9

COPYRIGHT 1962  
U.S. COGS, TITLE 17  
LOHAIN COUNTY, OHIO  
Reproduced by  
Ailed Microfilm Corp.  
Akron, Ohio