

Eastern Heights No 8 E, Vol. 13 Pa. 12
Lots in blank: The Eastern Hts Land

The City of Elyria
20.95 Ac Lot 4
5.27 " " 5

MIAMI ALL'T NO. 3
E. Hts. Sub. No. 12
Scale 1" = 50'
PLAT VOL. 16, Pg 7

YALE AVE. ALL'T. NO. 3
Vol. 19 Pg. 29
Lots in Plank John E. Galazin et al

16

PARK AVE.

COLUMBIA AVE.

60'

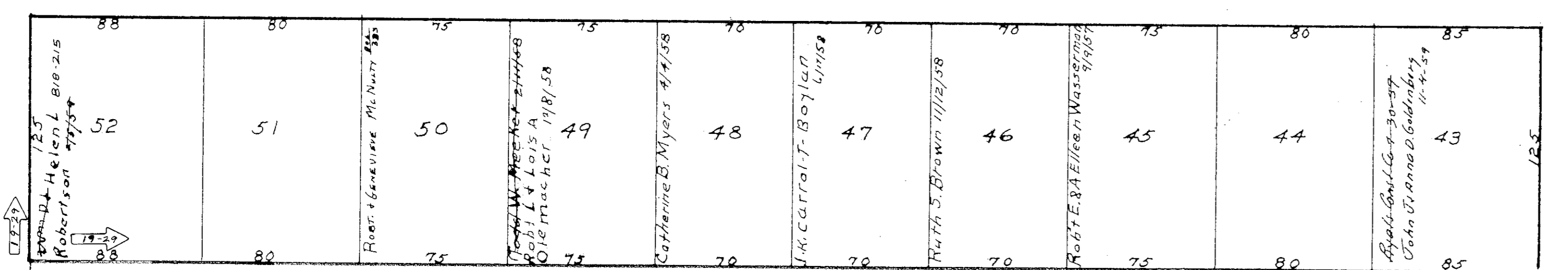
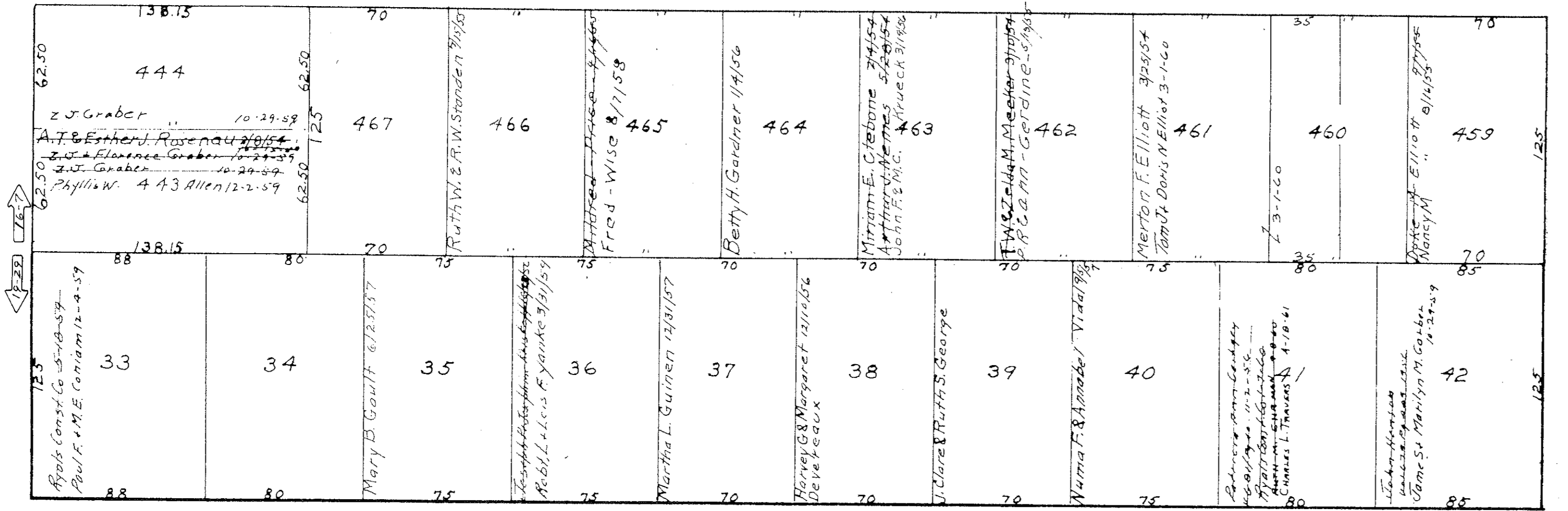
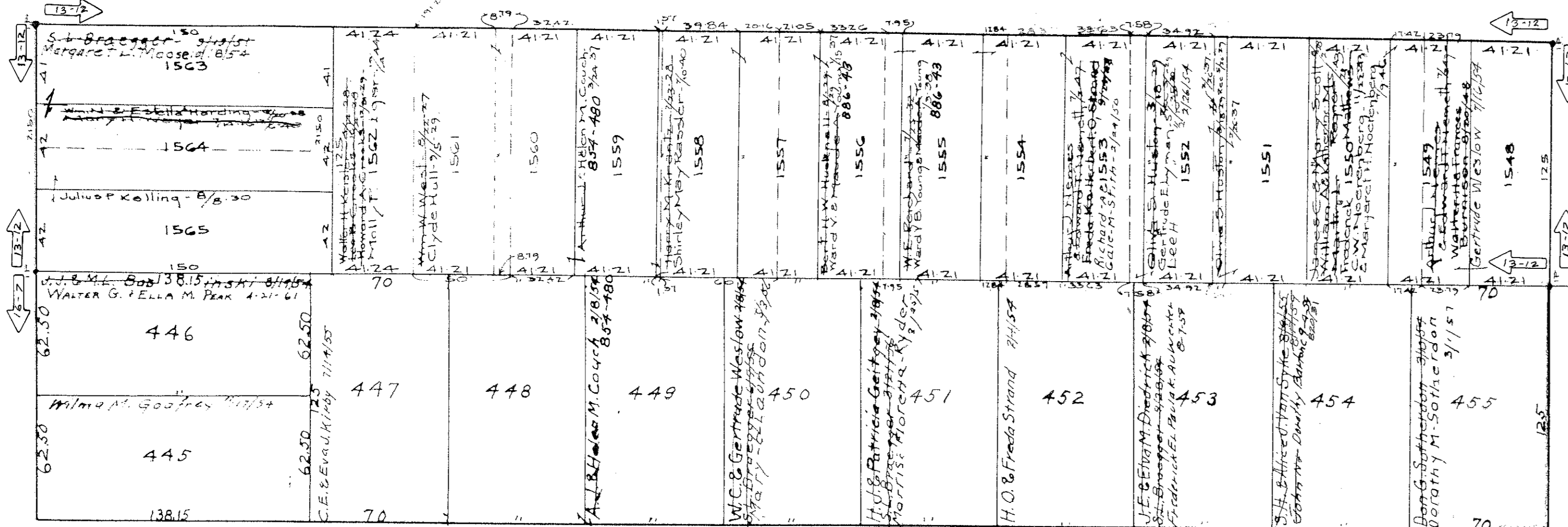
60'

MIAMI AVE 60'

60'

GARFORD AVE

YALE AVE. 60'



PLAS-MEYERS ALL'T NO. 2

VOL. 22 PG. 65

1

ELYRIA CITY
BOOK 8

COPYRIGHT 1962
U.S. CODE, TITLE 17
LOHAIN COUNTY, OHIO
Reproduced by,
Allied Microfilm Corp.
Akron, Ohio

180' to East line
Garford 595.52