

S. Line Donahue

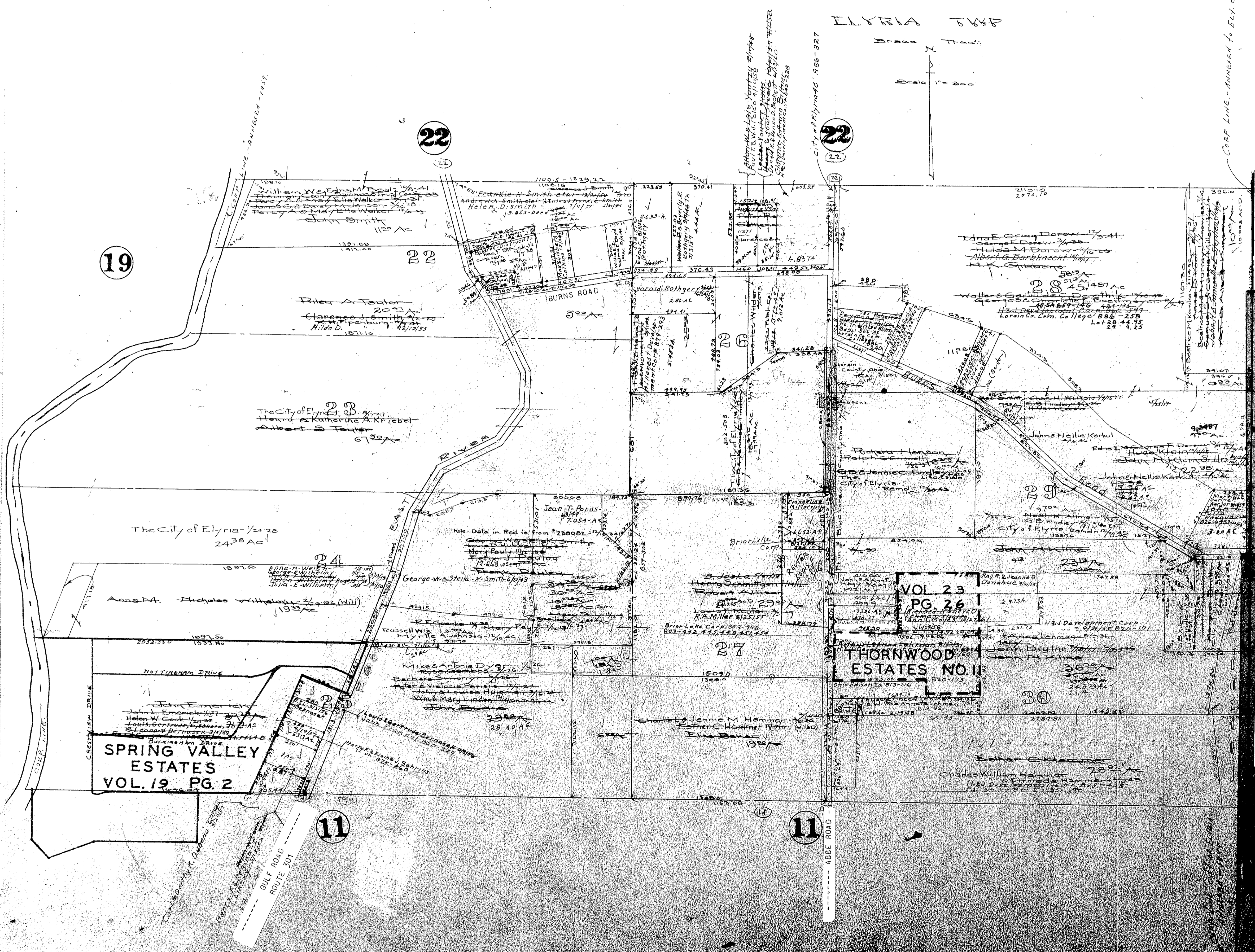
SEE
VOL 23 PG 26

Thornwood Homes Inc. 813-44

ELYRIA TWP

BRASS TRAIL

SCALE 1" = 200'



19

22

22

The City of Elyria
Henry & Katherine A. Kriebel
Albert S. Taylor
6732A

The City of Elyria - 1/2428
2438 AC

SPRING VALLEY
ESTATES
VOL. 19, PG. 2

VOL 23
PG 26
THORNWOOD
ESTATES NO. 11

11

11

ELYRIA TOWNSHIP

COPYRIGHT 1962
U.S. CODE, TITLE 17
LORAIN COUNTY, OHIO
Reproduced by,
Allied Microfilm Corp.
Akron, Ohio

CORP LINES - ANNEXED TO ELYRIA CITY - 1919

RIDGEVILLE TWP. PAGE 3