

AMHERST VILLAGE

COPYRIGHT 1968
BY THE CITY OF
AMHERST, MASS.
REPRODUCED BY
ALLIED MICROFILM CORP.
ANN ARBOR, MICH.

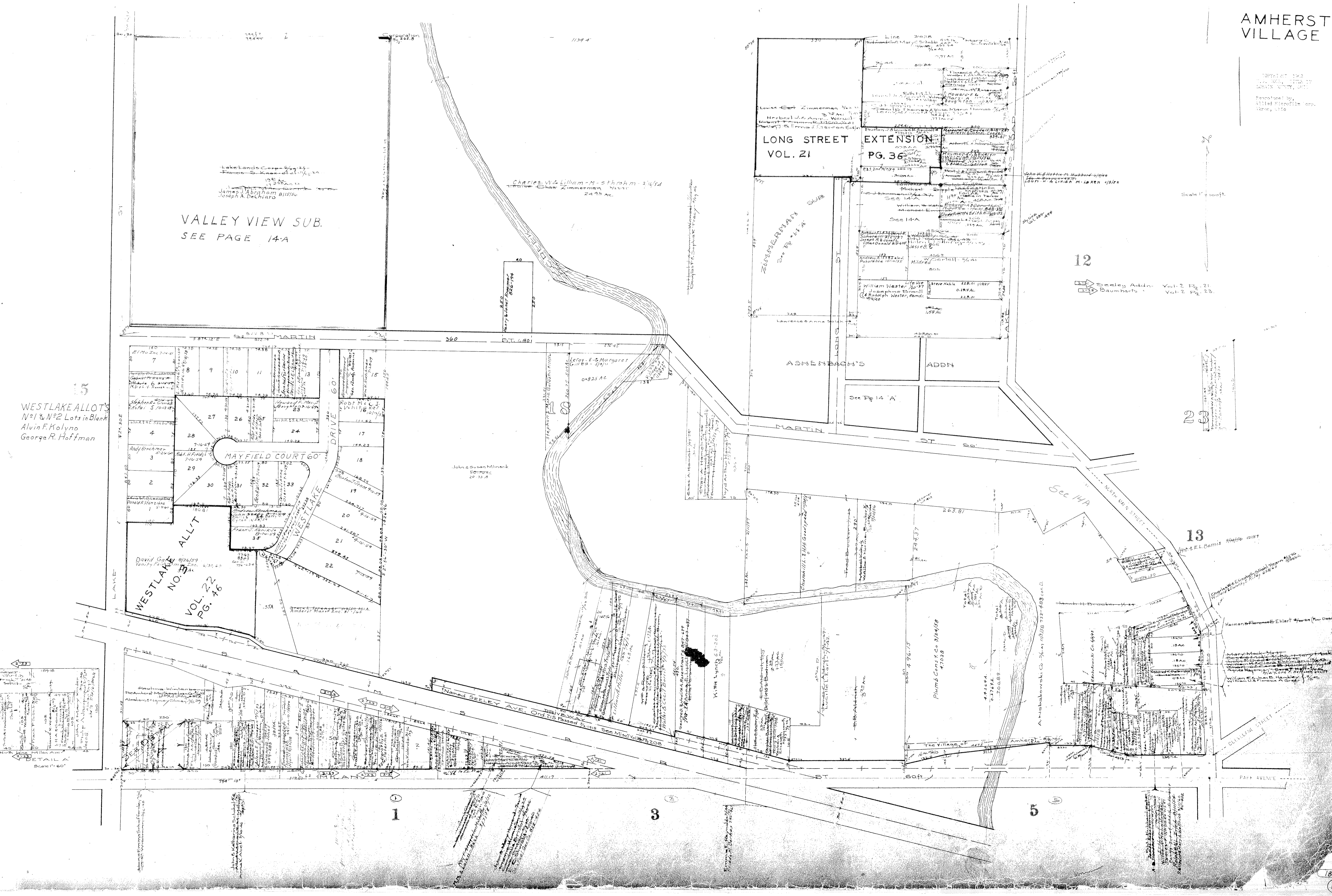
Scale 1" = 100'

12

Sealey Addn. Vol. 2 Pg. 21
Baumhach's Vol. 2 Pg. 23

23

13



VALLEY VIEW SUB.
SEE PAGE 14-A

LONG STREET
VOL. 21
PG. 36

WESTLAKE ALLOT'S
No. 1 & No. 2 Lots in Blank
Alvin F. Kolyno
George R. Hoffman

WESTLAKE
NO. 3
VOL. 22
PG. 46

MAYFIELD COURT 60'

WESTLAKE DRIVE 60'

ASHENBACH'S
ADDN.

Charles W. Lilliam - M. Strahm - 3145
The Chas. Zimmerman Trust
24th Ac.

John & Susan Minarik
20-22-4

Plumb Corp. Co. 3144/48
400.08

Herbert Florence E. Ehler #1404 (Rev. Design)

