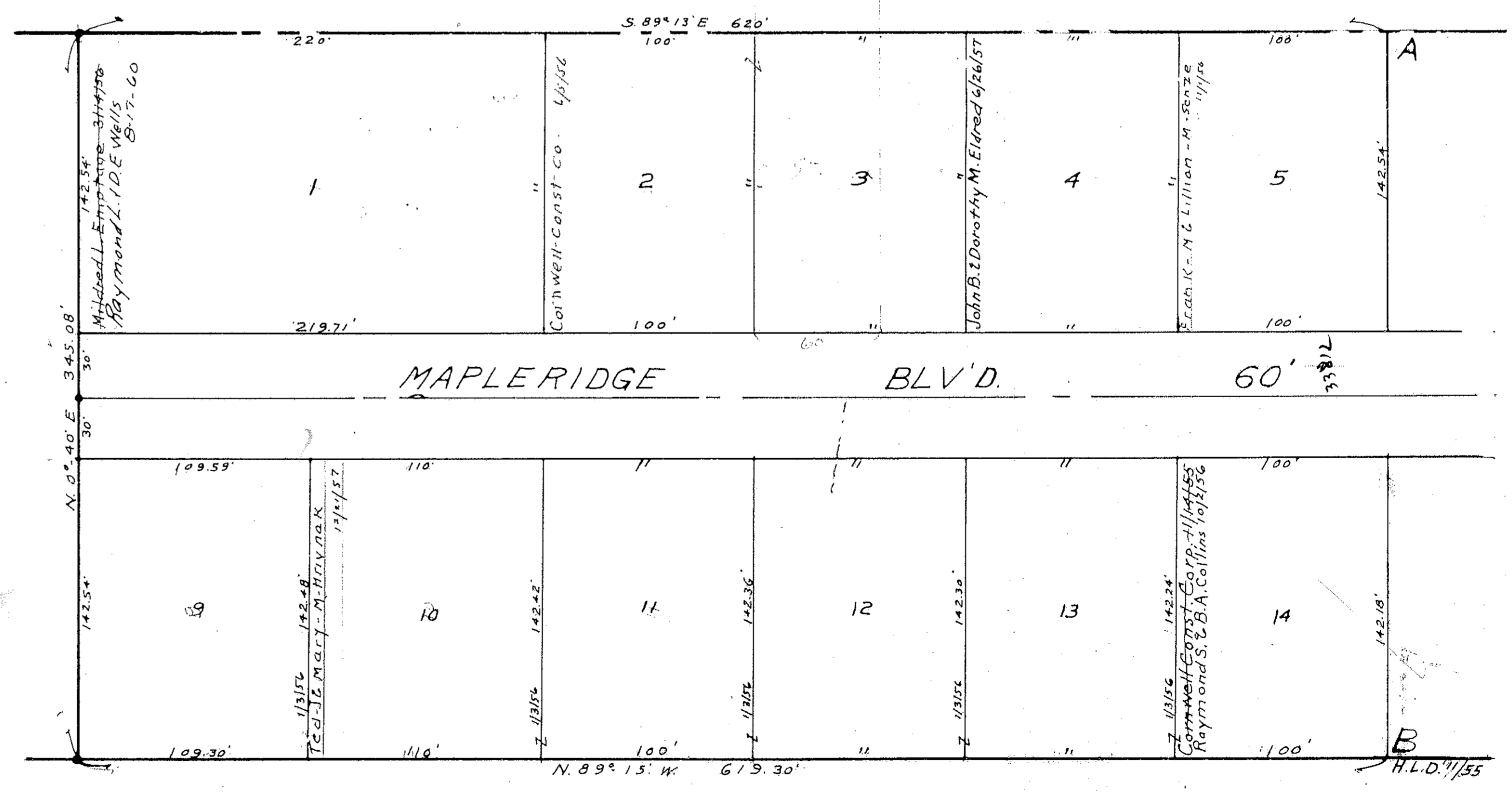


MAPLERIDGE SUBDIVISION
 SEC. 24, AVON VILLAGE.
 Lots in Blank: MLEmptage-President.
 PLAT VOL. 18, PAGE 27-A.
 8.901 Ac.



AVON MAP OF VILLAGE

COPYRIGHT 1962
 U.S. CODE, TITLE 17
 LORAIN COUNTY, OHIO
 Reproduced by:
 Allied Microfilm Corp.
 Akron, Ohio