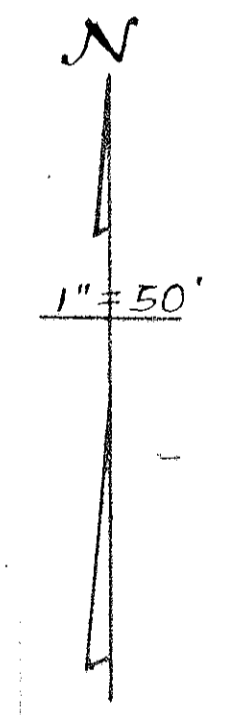
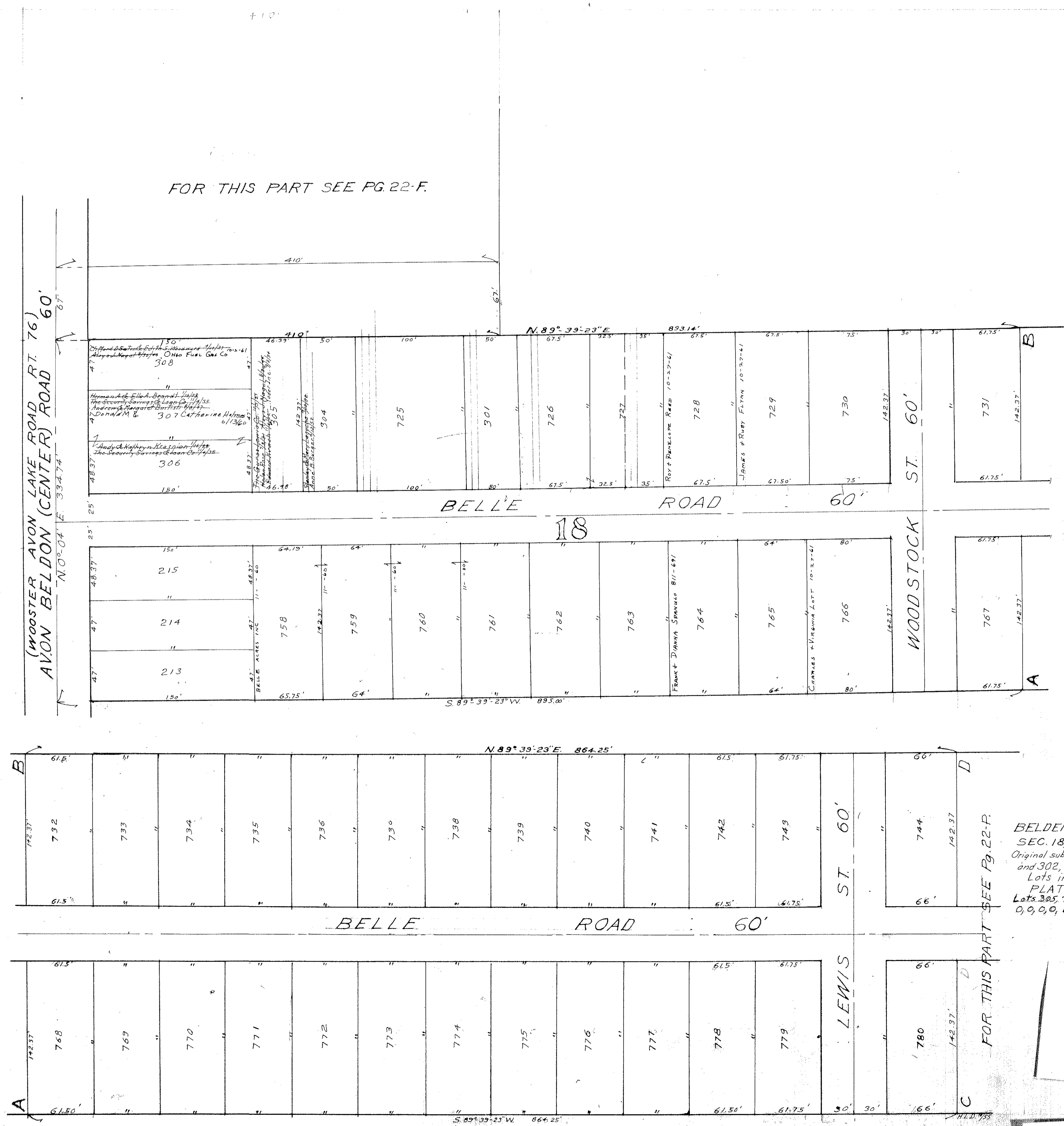


FOR THIS PART SEE PG. 22-F.



FOR THIS PART SEE PG. 22-F.

BELDEN PARK SUB. NO. 2.
SEC. 18, AVON LAKE VILLAGE.
Original sublots 216 to 300 inclusive
and 302, 303 have been re-subdivided.
Lots in Blank: Yoder Inc.
PLAT VOL. 18, PG. 24.
Lots 305, 725-727, 762-793
0, 0, 0, Belle Acres Inc. D.V. 797: P. 496

COPYRIGHT 1962
U.S. CODE, TITLE 17
LORAIN COUNTY, OHIO
Reproduced by,
Allied Microfilm Corp.
Akron, Ohio

AVON LAKE VILLAGE