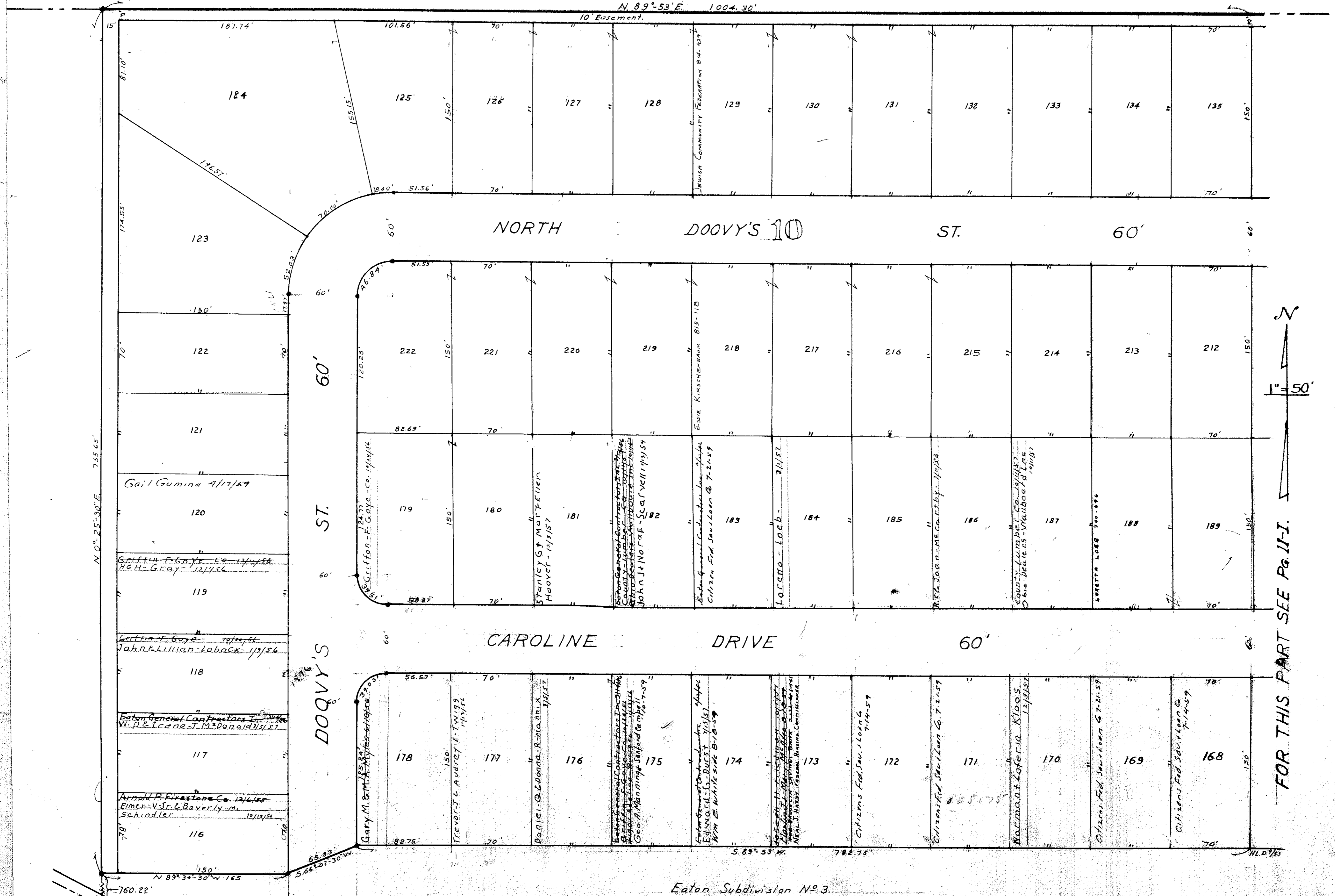


EATON SUBDIVISION No 4.
 SEC. 10, AVON VILLAGE.
 PLAT VOL. 107 PG. 37.
 Lots in Blank: Griffin, F. Goye, David Kirshenbaum Pres.
 117-222 Essie Kirshenbaum + A.P. Goulder 13/27/59



FOR THIS PART SEE Pg. 11-I.

Old Conrad Rd.
 LORAIN - AVON RD 80
 STATE RT. 611

