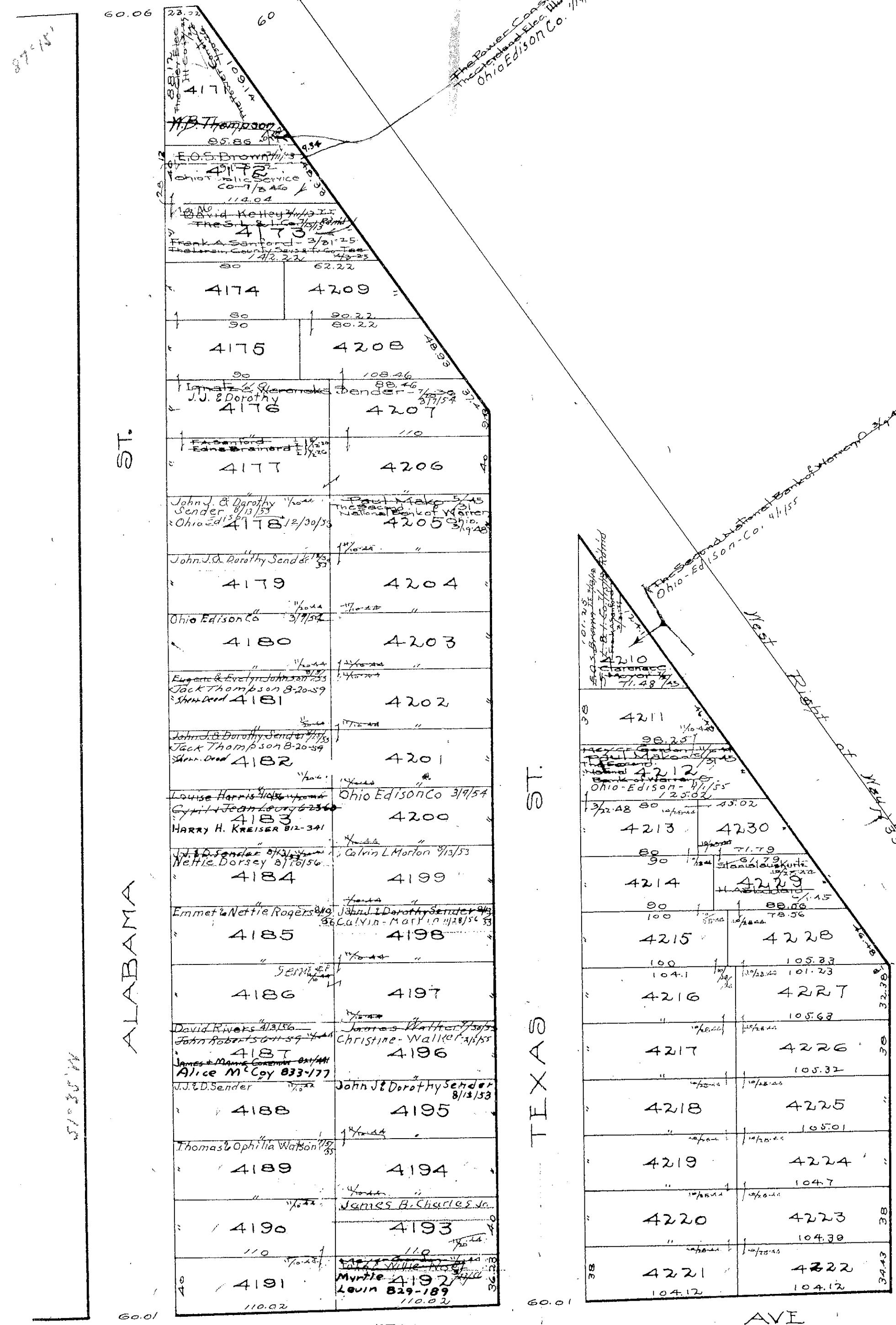
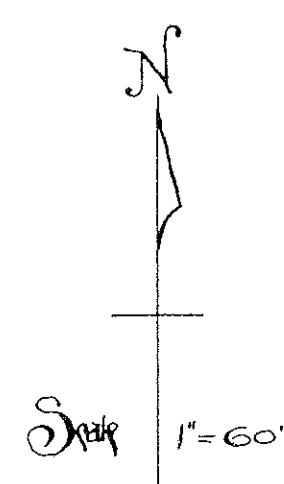


SEVENTEENTH AVE
S 88° 50' W

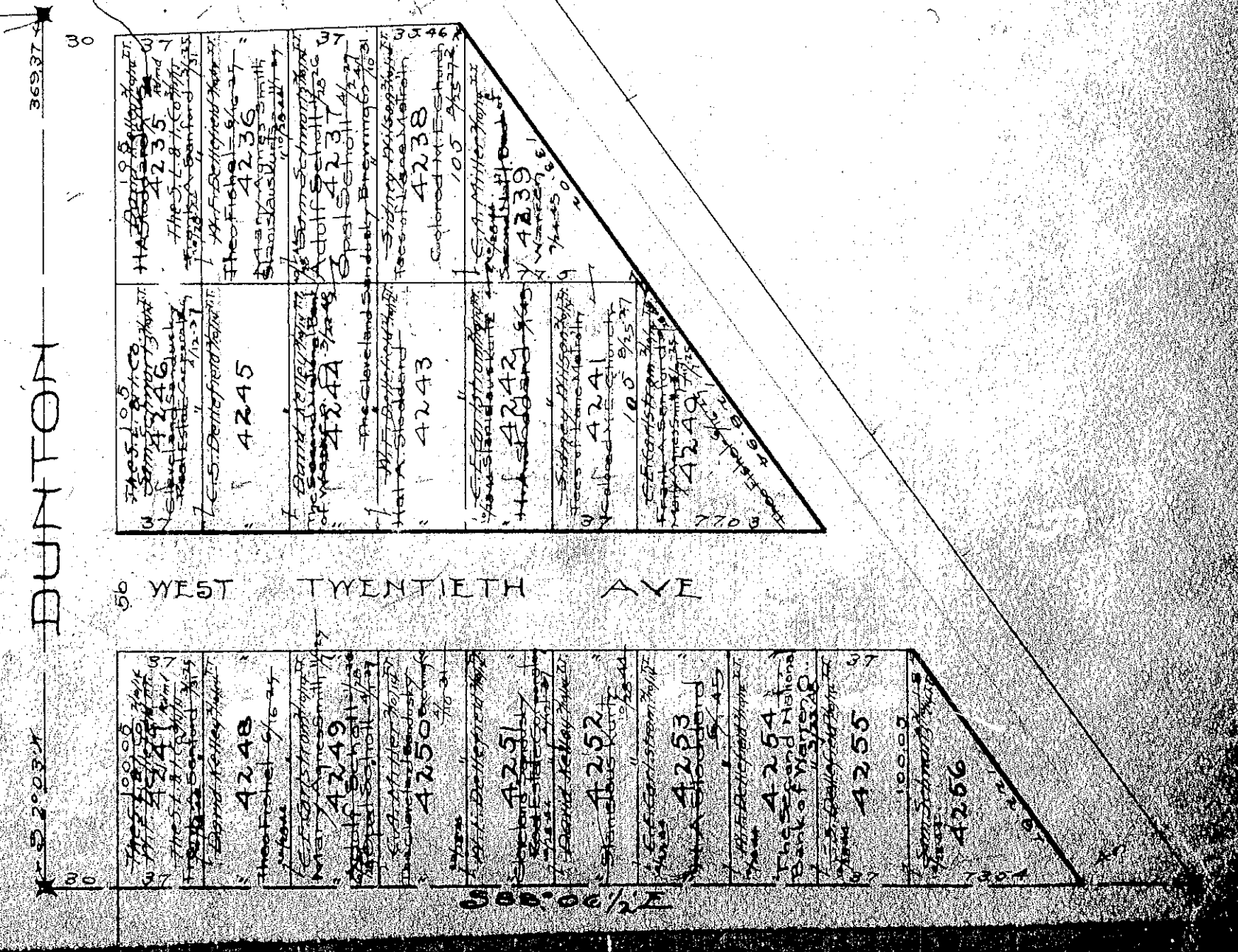


SHEFFIELD TWP.
SHEFFIELD LAND & IMPROVEMENT Co.'s
SUBDIVISION No 8
Original Lot 102
Recorded Vol. 6 Pg. 15



WEST NINETEENTH AVE
S 88° 24' E 435.71

WEST TWENTIETH AVE
S 88° 06' E



COPYRIGHT 1962
U.S. CODE, TITLE 17
LORAIN COUNTY, OHIO
Reproduced by,
Allied Microfilm Corp.
Akron, Ohio

SHEFFIELD TOWNSHIP