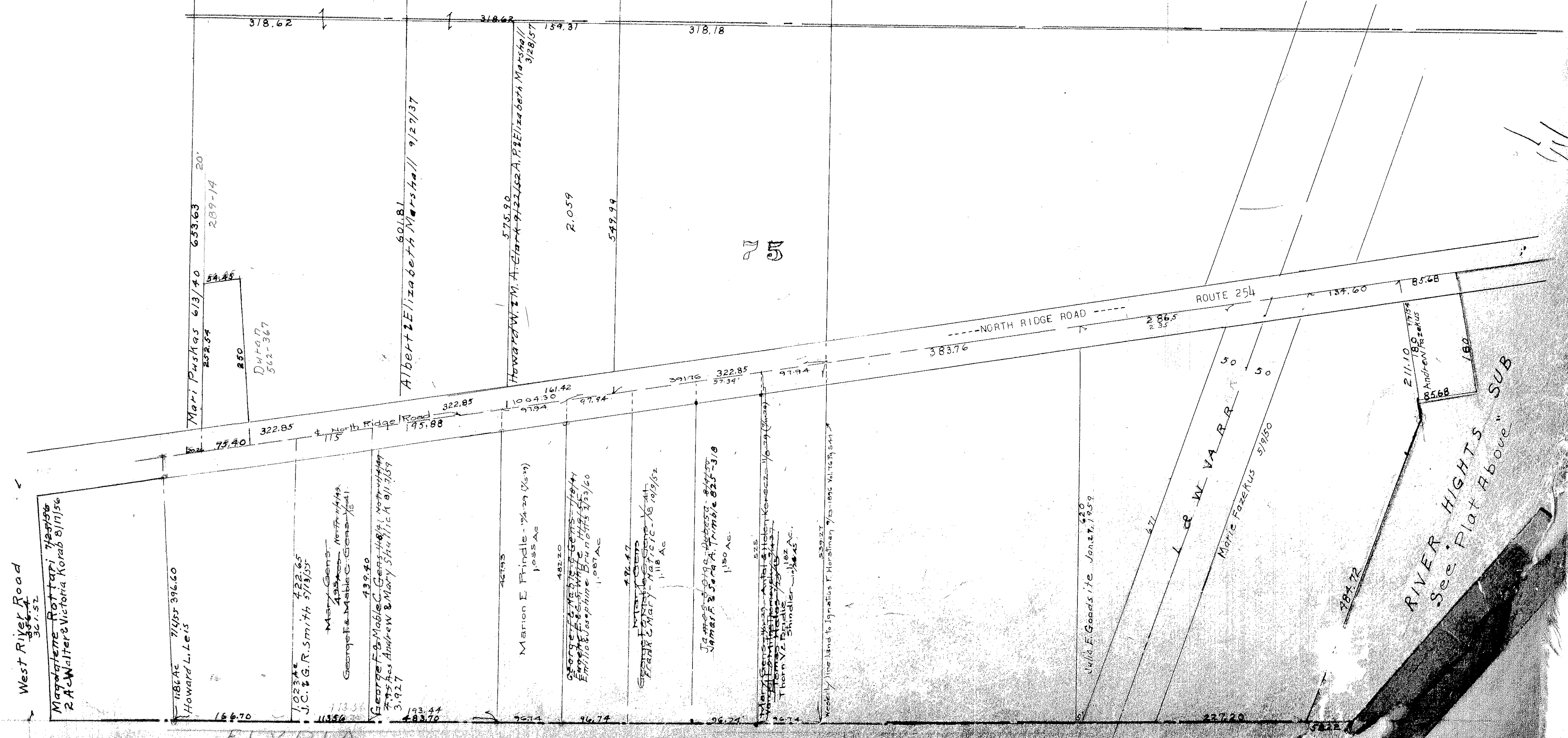
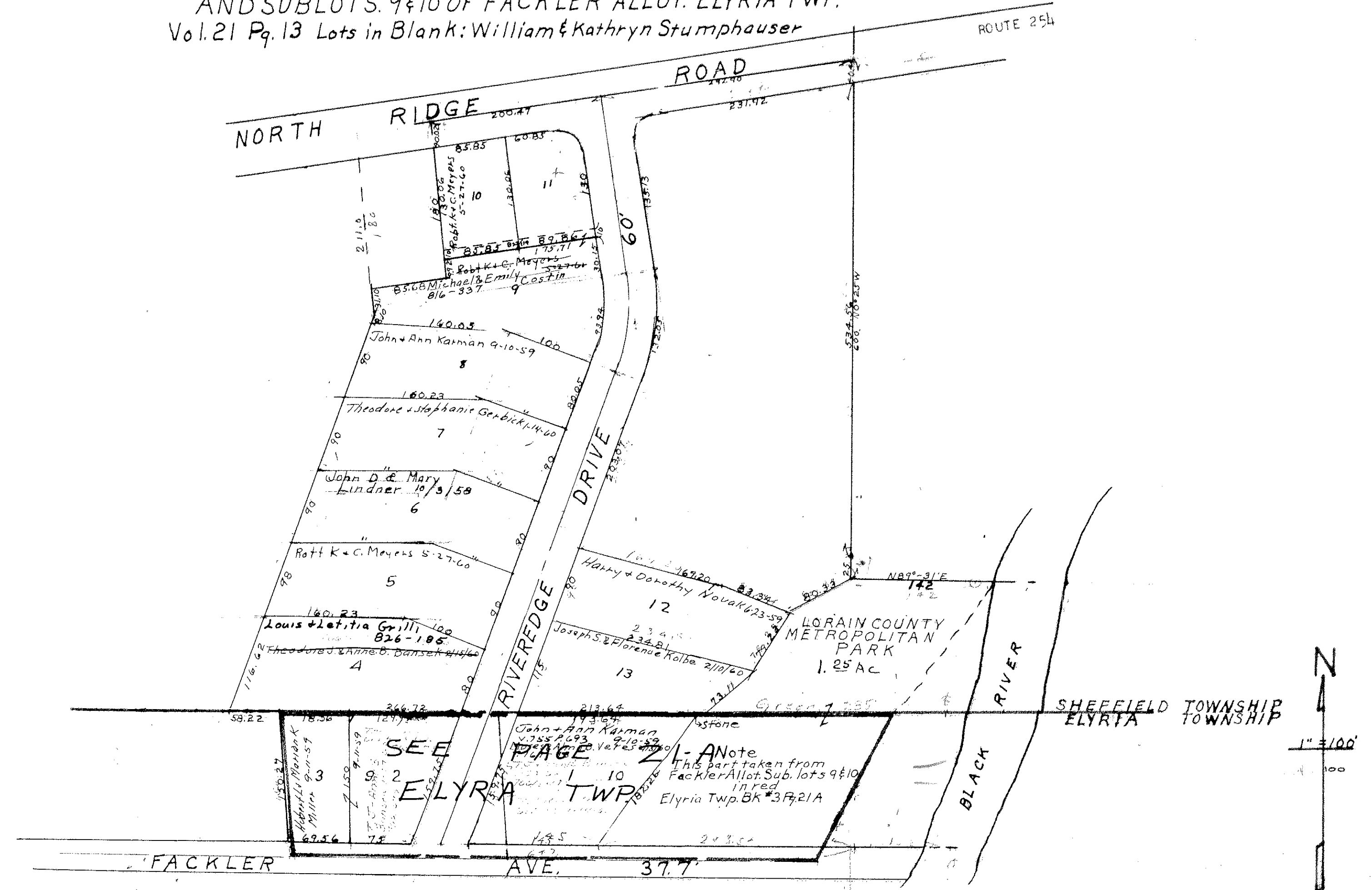


"PLAT ABOVE"
RIVER HEIGHTS SUB.
PART OF O.L.75 SHEFFIELD TWP
AND SUBLOTS 9&10 OF FACKLER ALLOT. ELYRIA TWP.
Vol. 21 Pg. 13 Lots in Blank: William & Kathryn Stumphauser

COPYRIGHT 1962
U.S. CODE, TITLE 17
LORAIN COUNTY, OHIO
Reproduced by,
Allied Microfilm Corp.
Akron, Ohio

SHEFFIELD
TOWNSHIP



RIVER HEIGHTS
SUB
See Plat Above

