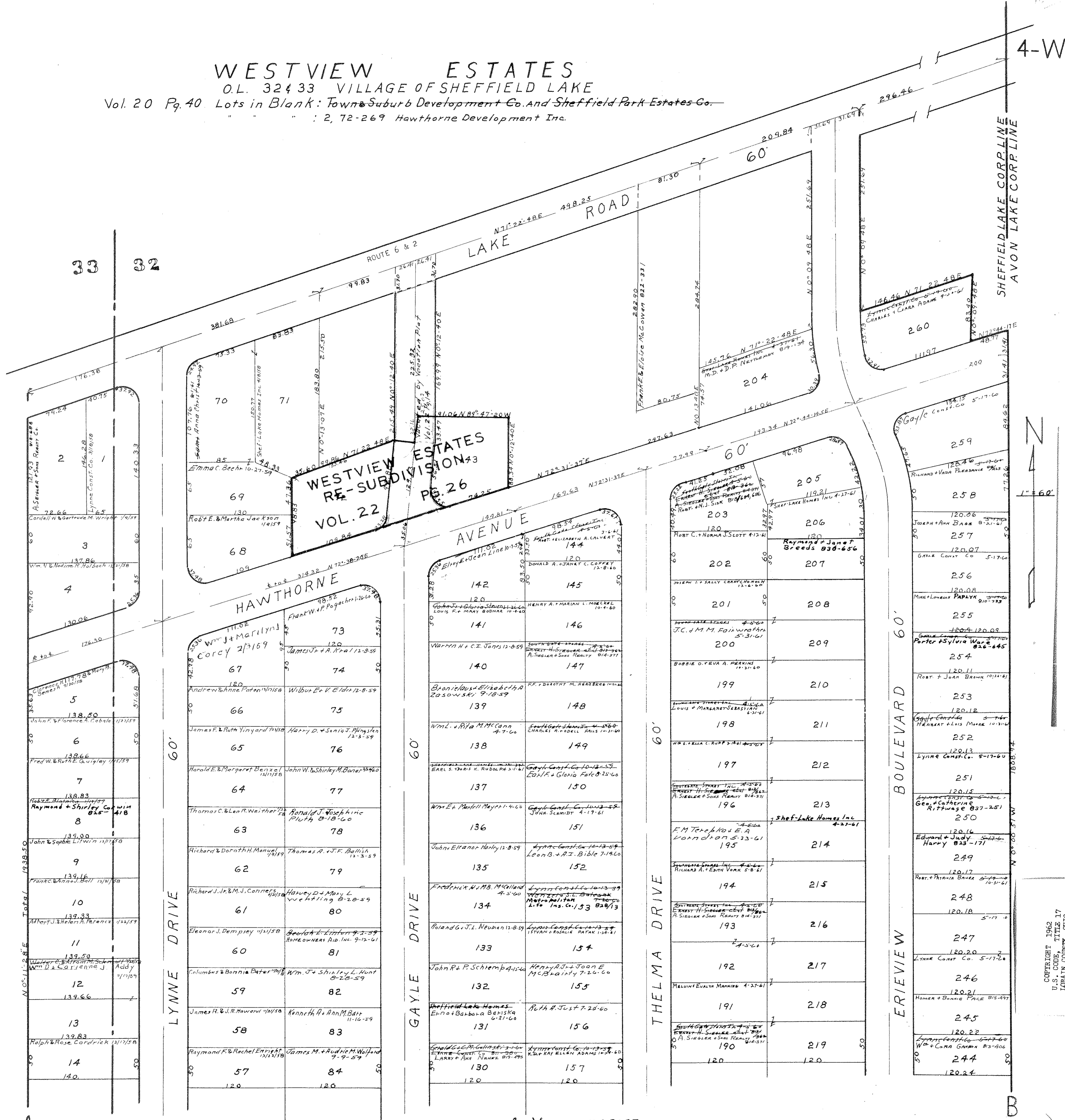


**WESTVIEW ESTATES**  
 O.L. 32433 VILLAGE OF SHEFFIELD LAKE  
 Vol. 20 Pg. 40. Lots in Blank: Town & Suburb Development Co. and Sheffield Park Estates Co.  
 : 2, 72-269 Hawthorne Development Inc.



SHEFFIELD LAKE  
VILLAGE

Copyright 1962  
 U.S. CODE, TITLE 17  
 LOHAIN COUNTY, OHIO  
 Reproduced by  
 Allied Microfilm Corp.  
 Akron, Ohio

SEE 4-X FOR THIS PART

749  
24