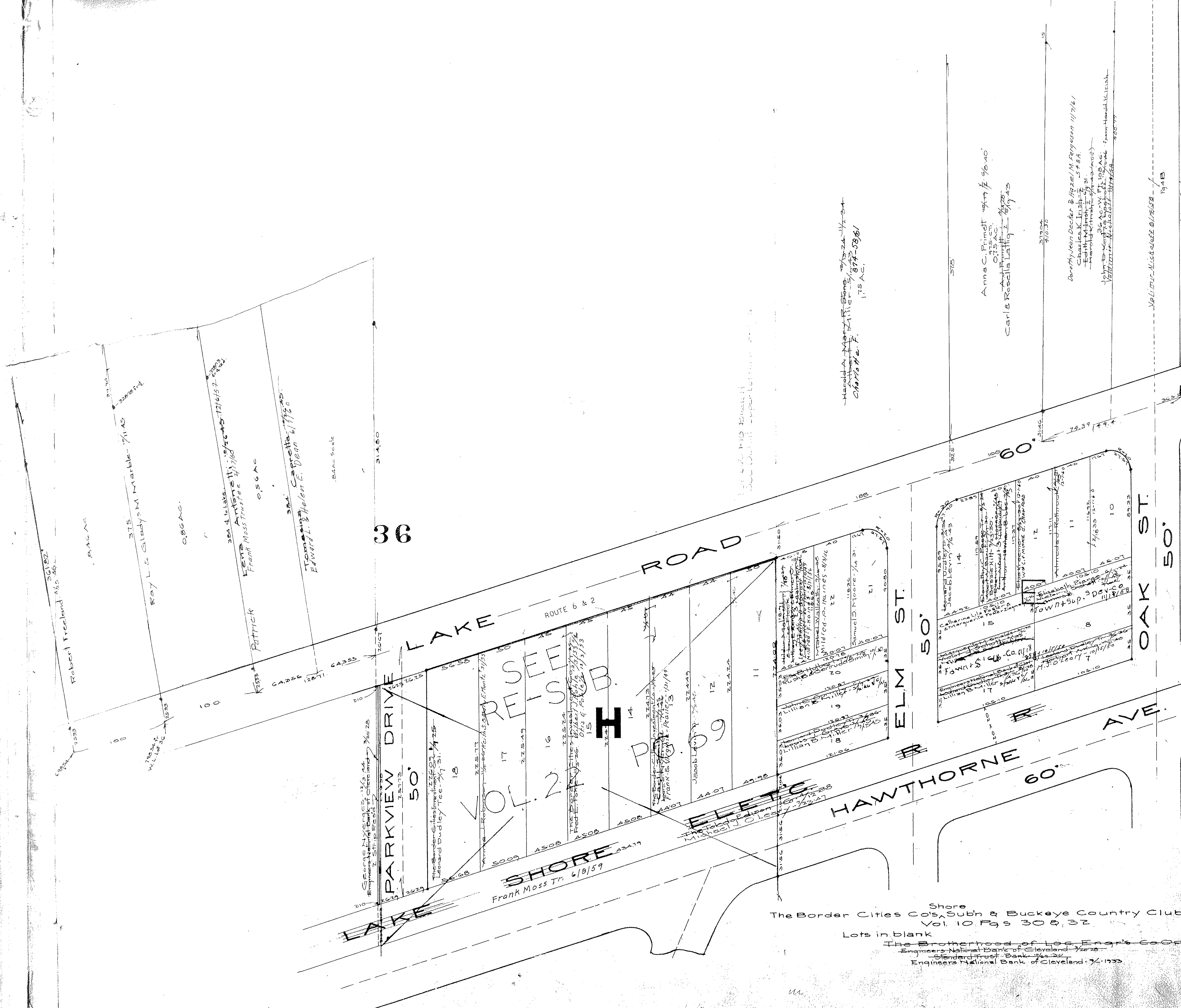


SEE Pg 4-B



36

35

LAKE SHORE DRIVE
50'

LAKE ROAD
ROUTE 6 & 2

ELM ST.
50'

OAK ST.
50'

HAWTHORNE AVE.
60'

LAKE SHORE
Frank Moss Tr. 6/8/59

The Border Cities Co's Shore Subn & Buckeye Country Club
Vol. 10, Pgs 30 & 32

Lots in blank
The Brotherhood of Locomotive Engineers Co-Op. Natl. Bank
Engineers National Bank of Cleveland - 1920
Standard Trust Bank - 1920
Engineers National Bank of Cleveland - 1920

The Border Cities Co's Shore Subn & Buckeye Country Club Vol. 11, Pgs. 13-14
Lots in blank Brotherhood of Locomotive Engineers

Co-Operative Natl. Bank of Cleveland
Engineers National Bank of Cleveland - 1920
Standard Trust Bank - 1920
Engineers National Bank of Cleveland - 1920

COPYRIGHT 1962
U.S. CODE, TITLE 17
LORAIN COUNTY, OHIO

Reproduced by,
Allied Microfilm Corp.
Akron, Ohio

SHEFFIELD LAKE
VILLAGE