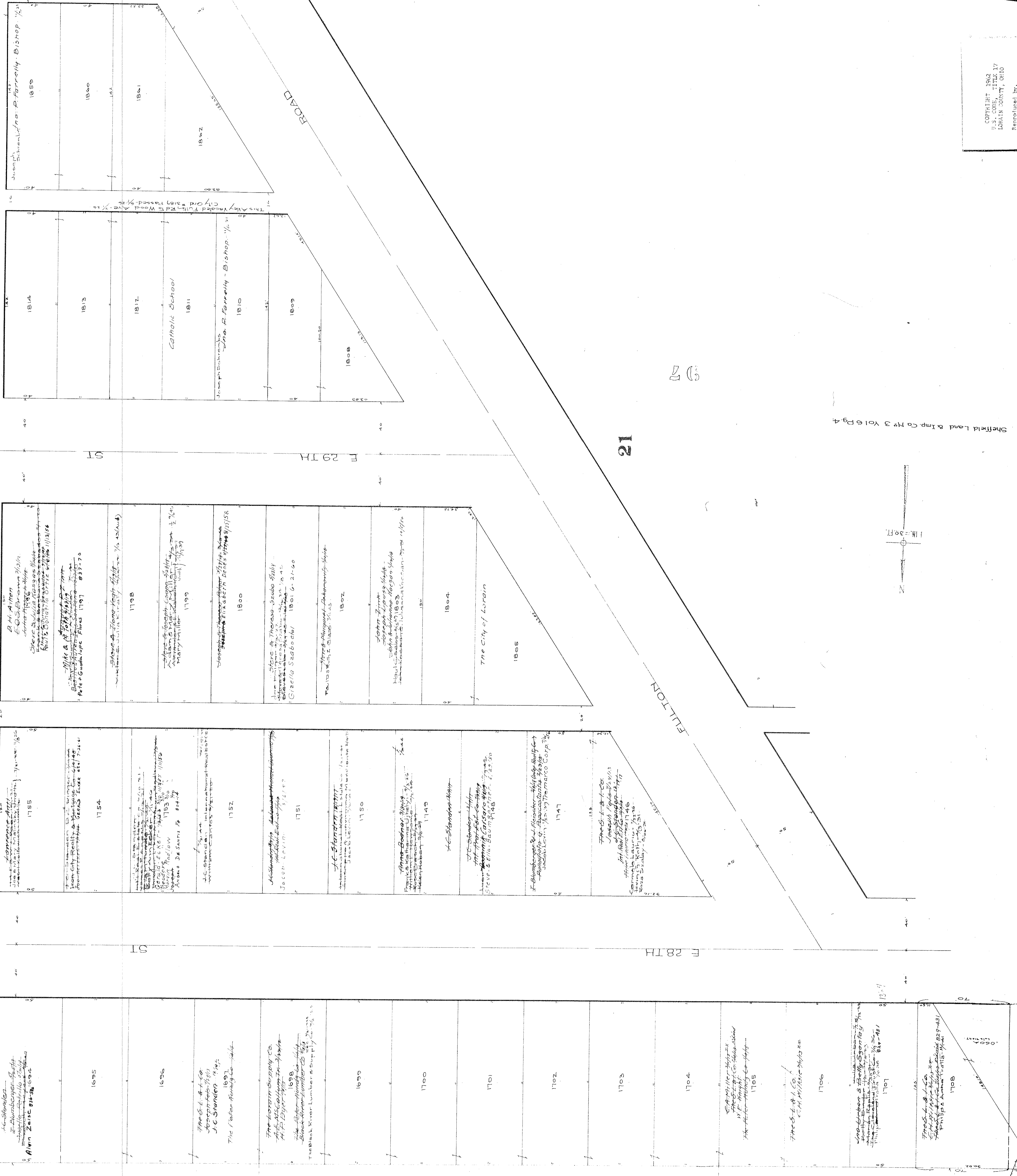
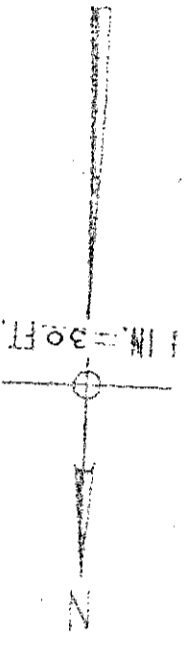


COPYRIGHT 1942  
BY  
LORAIN COUNTY, IOWA  
Reproduced by  
Alcorn, Ottis

Sheffield Land Exp. Co. No. 3 Vol. 6 Pg. 4



WOOD AVE  
F 28TH ST  
F 29TH ST  
F 30TH ST  
EILTON ROAD

23  
24  
25

Right of Way Vol. 122  
Company  
Railroad  
Industrial & A. S.  
The

91