

COPYRIGHT 1962  
U.S. GOVERNMENT PRINTING OFFICE  
LORAIN COUNTY, OHIO  
Reproduced by  
Allied Map & Plate Corp.  
Akron, Ohio

Seah Chamberlain Airt. Vol. 2 Pg. 11.

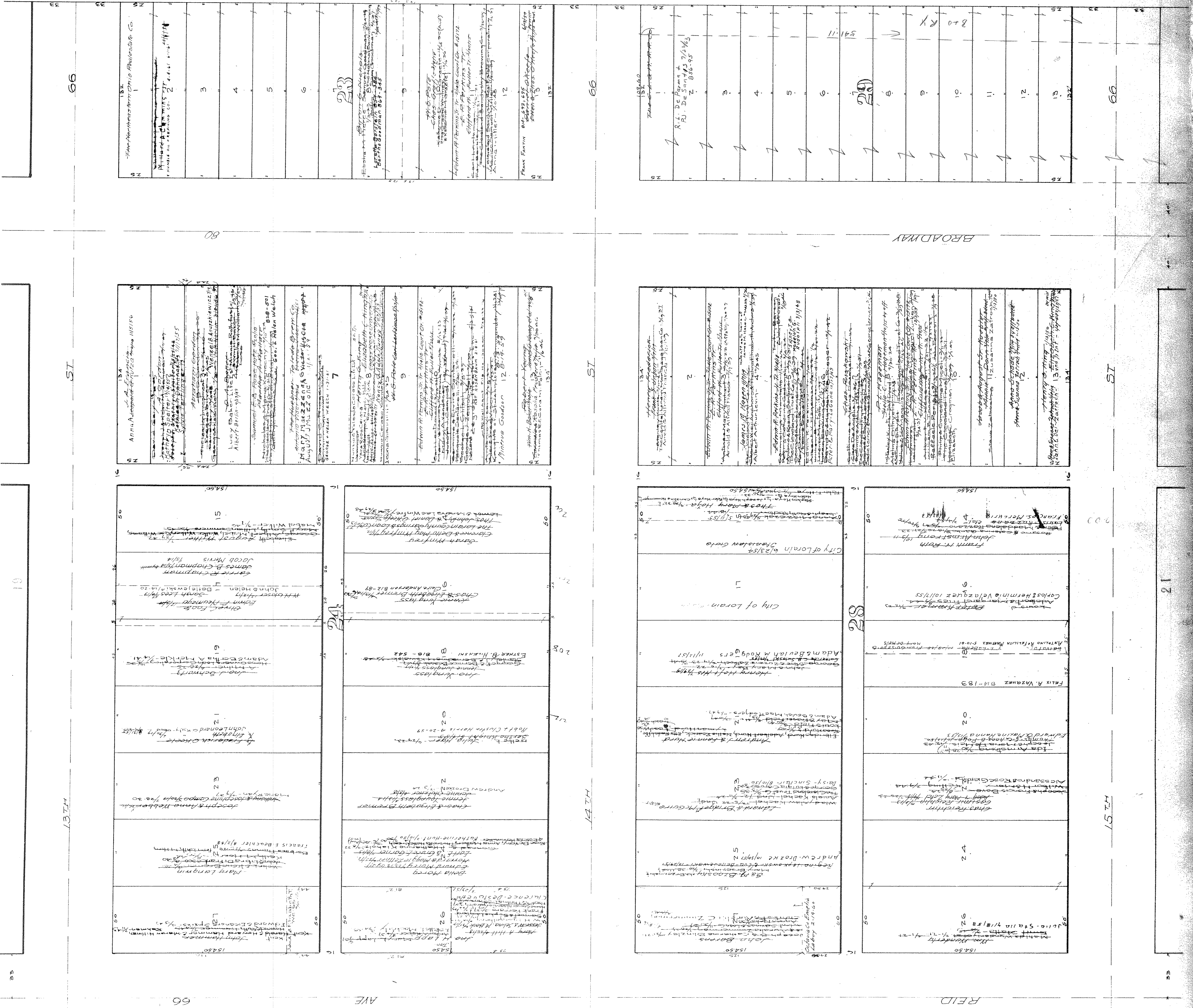
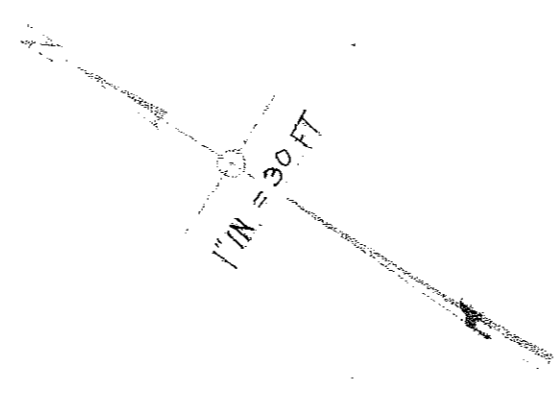


Table with 2 columns: Parcel Number and Description. The table lists various parcels and their associated owners or descriptions.

1	APPA A. ...
2	...
3	...
4	...
5	...
6	...
7	...
8	...
9	...
10	...
11	...
12	...
13	...
14	...
15	...
16	...
17	...
18	...
19	...
20	...
21	...
22	...
23	...
24	...
25	...
26	...
27	...
28	...
29	...
30	...
31	...
32	...
33	...
34	...
35	...

Table with 2 columns: Parcel Number and Description. This table continues the list of parcels from the main map, providing further details for each parcel.

36	...
37	...
38	...
39	...
40	...
41	...
42	...
43	...
44	...
45	...
46	...
47	...
48	...
49	...
50	...
51	...
52	...
53	...
54	...
55	...
56	...
57	...
58	...
59	...
60	...
61	...
62	...
63	...
64	...
65	...
66	...
67	...
68	...
69	...
70	...
71	...
72	...
73	...
74	...
75	...
76	...
77	...
78	...
79	...
80	...
81	...
82	...
83	...
84	...
85	...
86	...
87	...
88	...
89	...
90	...
91	...
92	...
93	...
94	...
95	...
96	...
97	...
98	...
99	...
100	...