

SEE PAGE 16-A

Oberlin Ave Rty Co Proposed Subn.

Pg 13

SEE PAGE 16-A

See Page 17

SEE FOR R.F.K.

SEE ALSO PAGES 18-A, B, C, and D

SEE PAGES 16-18-A, B, C, D

SEE DETAIL AT RIGHT

SEE PAGE 16-A

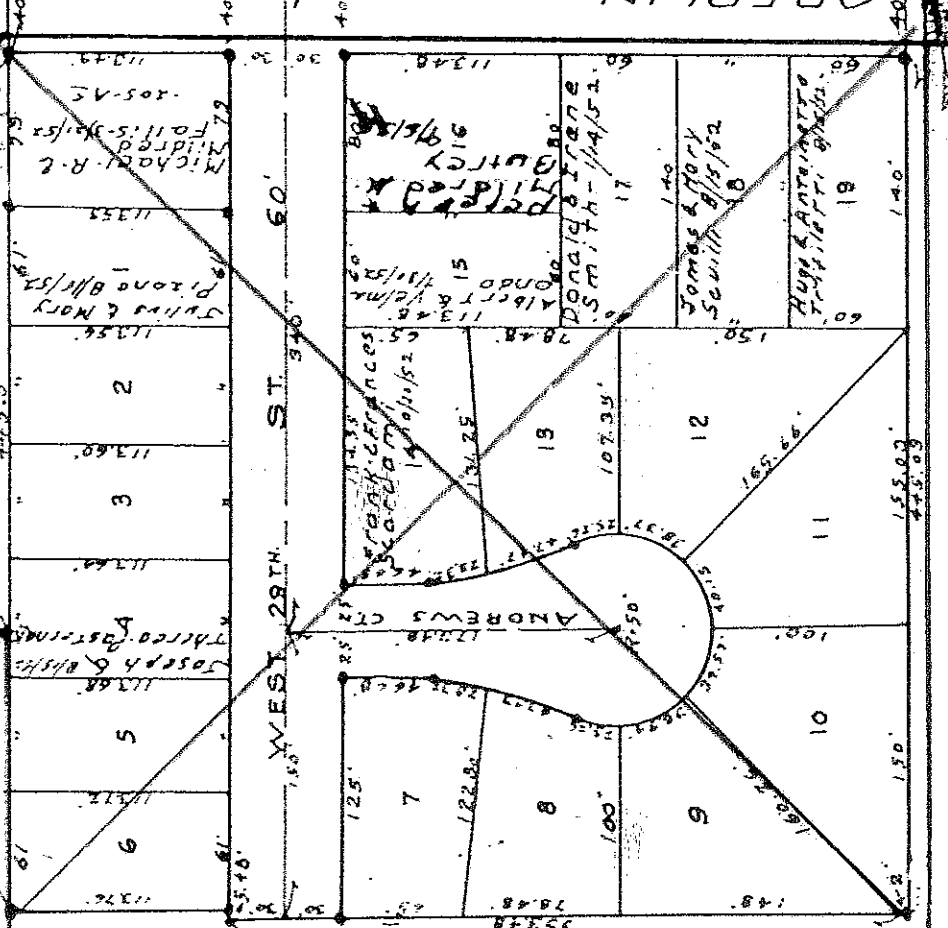
W.J. NEUMAN SUB. No. 2 12/19/16
SEE PAGE 16B

Frederick Neuman 2457 W. 2457 W. (See into Block 17 by decree C. P. Court Case # 11129 1/10/1916)

W.J. NEUMAN SUB. Recorded 1/15
SEE PAGE 16B

Meritor vs. Hamann by Authority of Emily Neuman 1/11/11
W. J. Neuman 2457 W. 2457 W. (See into Block 17 by decree C. P. Court Case # 11129 1/10/1916)

JO-AL-MAR SUB-DIV. No. 1



SCALE OF DETAIL 1" = 50'

SEE 18-A

Book 3 B 23

COPYRIGHT 1962
U.S. GOVERNMENT PRINTING OFFICE
LORAIN COUNTY, OHIO
Reproduced by
Allied Map & Sign Co., Inc.
Akron, OHIO

LORAIN CITY BOOK 1