

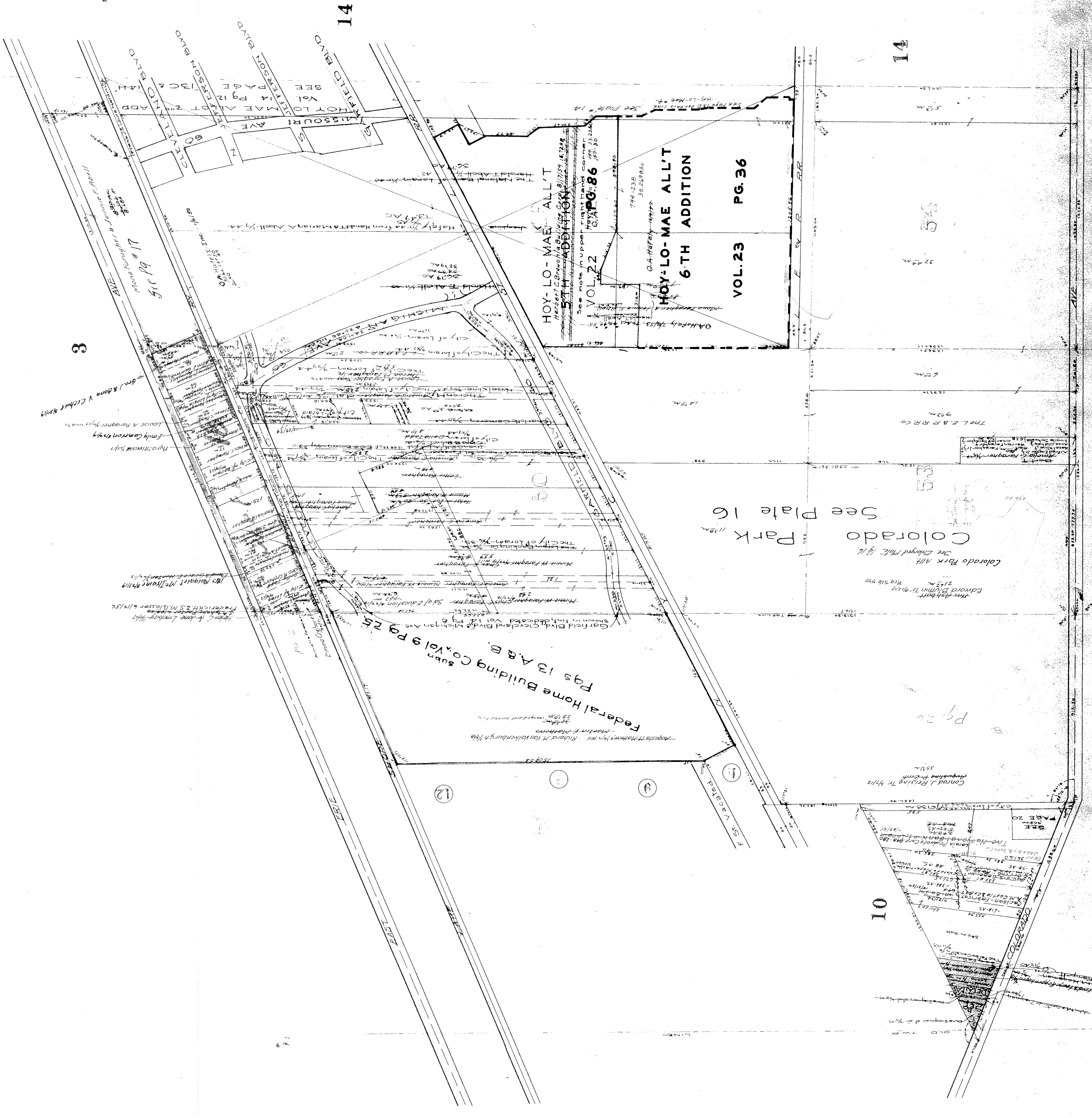
Note Land in the Blue outline was at one time in the City of Lorain but was later set over to Sheffield Township by Common Pleas Ct. and Transferred Aug-1912. It was again annexed to the City of Lorain by Annexation Proceedings recorded as **Mis. 7-382 Plat. 10-4**



LORAIN CITY

BOOK 7

COPYRIGHT 1905
U.S. CODE, TITLE 17
LANSING COUNTY, OHIO
Reproduced by
Lilled Microfilm Corp.
Akron, Ohio



10

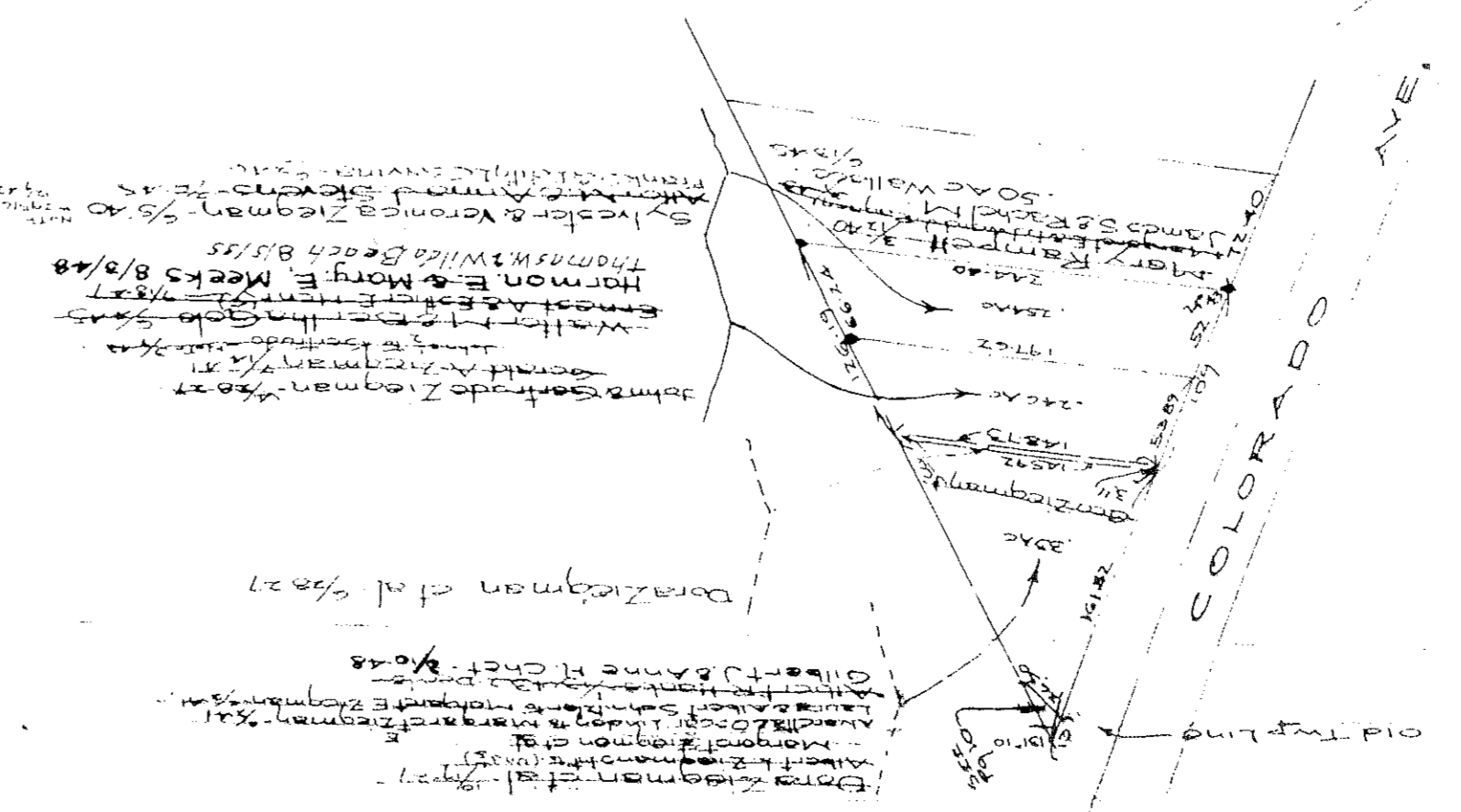
14

54

Colorado Park
See Plate 16

Federal Home Building Co. Vol 9 Pgs 25, 13 A & B

HOY-LO-MAE ALL'T
6TH ADDITION
VOL. 23 PG. 36
VOL. 22 PG. 86



DETAIL A
Scale 1"=100'