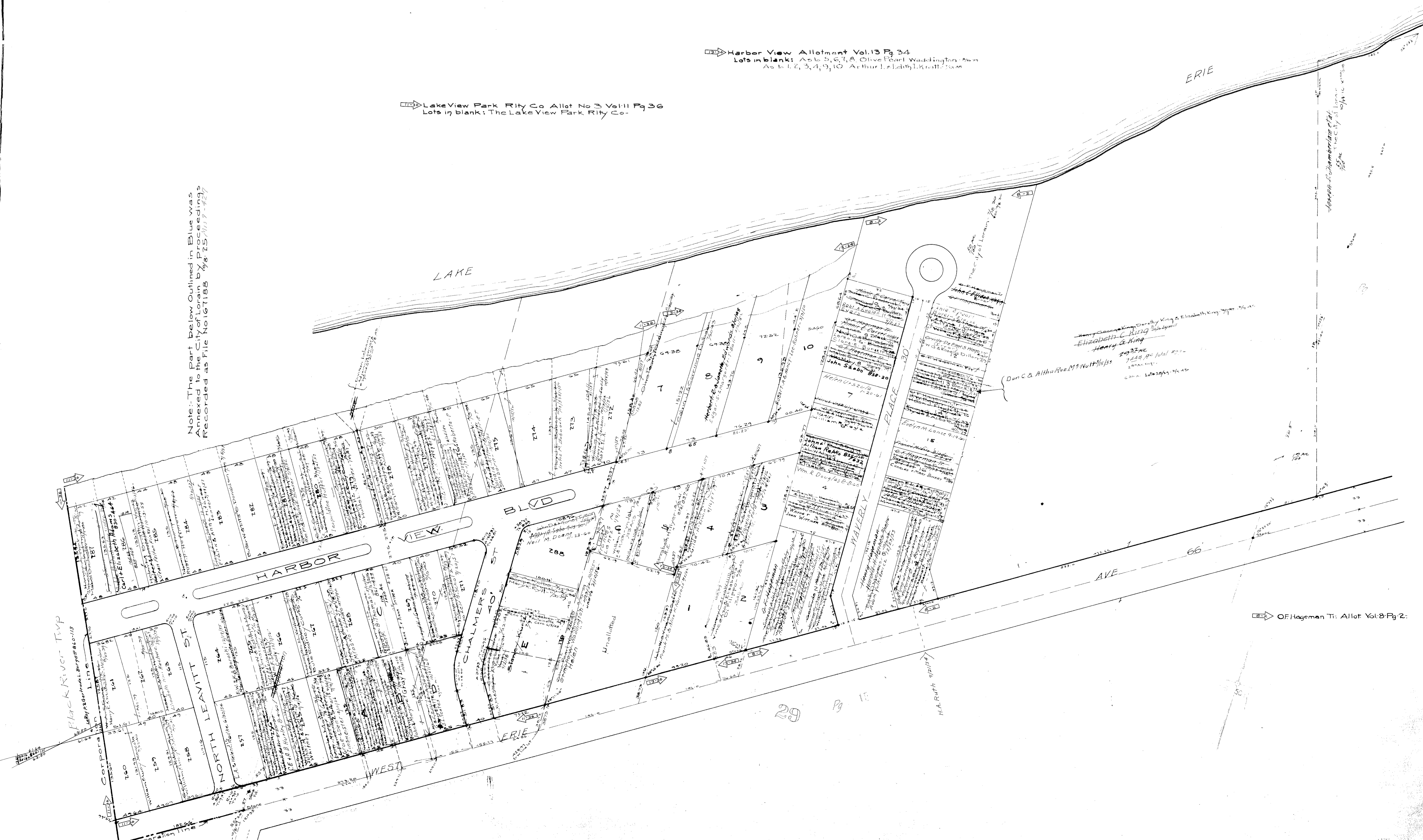


Harbor View Allotment Vol. 13 Pg 34
 Lots in blank: As to 5, 6, 7, 8, Olive Pearl Waddington
 As to 1, 2, 3, 4, 9, 10 Arthur L. Leiby & Walter J. ...
 Lake View Park Rty Co Allot No 3 Vol 11 Pg 36
 Lots in blank: The Lake View Park Rty Co.

Note: The part below outlined in Blue was Annexed to the City of Lorain by proceedings Recorded as File No 167188 1/8-15/11 9-42/11



OF Hageman Tr. Allot Vol 8 Pg 2

COPYRIGHT 1962
 U.S. GOVERNMENT PRINTING OFFICE
 LORAIN COUNTY, OHIO
 Reproduced by,
 Allied Microfilm Corp.
 Akron, Ohio

LORAIN CITY
BOOK 1