

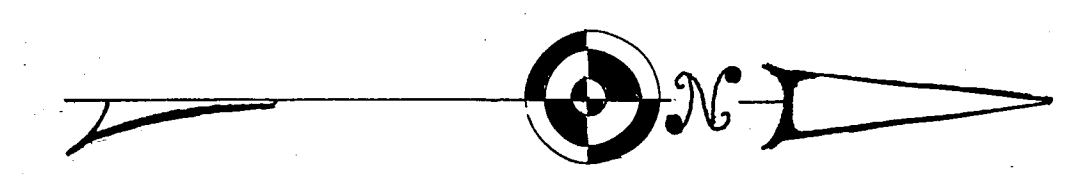
# PADWAY ALLOTMENT

## SECOND ADDITION

### PART ORIGINAL SHEFFIELD TOWNSHIP LOT NO.36 NOW IN SHEFFIELD LAKE VILLAGE

# LORAIN COUNTY OHIO

SCALE 1"=100'



WE THE UNDERSIGNED, JOHN A. RADER, VICE PRESIDENT AND BEN D. SOKOL, SECRETARY OF THE SHAW LAND COMPANY INCORPORATED, OWNERS OF THE LAND SHOWN ON THIS PLAT, AS OUTLINED BY HEAVY LINES, DO HEREBY ACCEPT THIS MAP AND SUBDIVISION OF THE SAME AND DEDICATE TO PUBLIC USE FOR STREET PURPOSES ALL OF THE STREETS, PARKS AND ROADWAYS, EXCEPTING THAT:

GRANTOR RESERVES TO ITSELF, ITS SUCCESSORS AND ASSIGNS THE RIGHT TO LAY, INSTALL AND MAINTAIN IN, ACROSS AND UNDERNEATH THE STREETS AND ROADWAYS HEREIN DEDICATED SEWER, WATER, GAS PIPES AND CONDUITS FOR TELEPHONE AND ELECTRIC POWER LINES, FOR THE USE AND BENEFIT OF ADJACENT AND NEIGHBORING PREMISES, TOGETHER WITH THE RIGHT TO ENTER UPON SAID PREMISES FOR THE PURPOSE OF LAYING, INSTALLING, REPAIRING AND MAINTAINING THE SAME. TITLE TO SUCH SEWER, WATER, GAS LINES AND CONDUITS AS MAY BE LAID BY THE GRANTOR, ITS SUCCESSORS AND ASSIGNS, SHALL REMAIN IN THE GRANTOR, ITS SUCCESSORS AND ASSIGNS.

PERPETUAL EASEMENTS ARE HEREBY GRANTED FOR THE CONSTRUCTION AND MAINTAINANCE OF ALL UTILITIES, AS SHOWN HEREON.  
BLOCK C IS TO BE ZONED FOR BUSINESS.

BY JOHN A. RADER  
VICE PRESIDENT

BY BEN D. SOKOL  
SECRETARY

STATE OF OHIO  
LORAIN COUNTY S.S.

BEFORE ME, A NOTARY PUBLIC IN AND FOR SAID COUNTY AND STATE PERSONALLY APPEARED THE ABOVE NAMED JOHN A. RADER, VICE PRESIDENT AND BEN D. SOKOL, SECRETARY OF THE SHAW LAND COMPANY INCORPORATED, AN OHIO CORPORATION, WHO ACKNOWLEDGED THAT THEY DID SIGN THE FOREGOING PLAT AND THAT IT WAS THEIR FREE ACT AND DEED.

IN TESTIMONY WHEREOF, I HAVE HEREUNTO SET MY HAND AND SEAL AT LORAIN OHIO THIS 3RD DAY OF SEPTEMBER 1954

JOE RADER NOTARY PUBLIC  
MY COMMISSION EXPIRES DECEMBER 15, 1955



THIS IS TO CERTIFY THAT THE ABOVE PLAT OF THE PADWAY ALLOTMENT, SECOND ADDITION, WAS APPROVED BY THE VILLAGE PLANNING COMMISSION OF SHEFFIELD LAKE, OHIO, AT A MEETING OF SAID COMMISSION HELD ON THE 15TH DAY OF NOVEMBER, 1954.

RALPH J. BARDNER VILLAGE PLANNING COMMISSION OF SHEFFIELD LAKE, OHIO  
WILLIAM J. ENGLEHART-COUNCIL  
VICTOR J. MONZ VILLAGE PLANNING COMMISSION OF SHEFFIELD LAKE, OHIO  
M.C. KOLCZUN VILLAGE PLANNING COMMISSION OF SHEFFIELD LAKE, OHIO  
S.W. JORDAN MAYOR

THIS TO CERTIFY THAT THE ABOVE PLAT IS HEREBY APPROVED ON THIS 15TH DAY OF NOVEMBER, 1954 BY THE PLANNING COMMISSION OF THE VILLAGE OF SHEFFIELD LAKE, OHIO

ELEANOR PISKURA SECRETARY

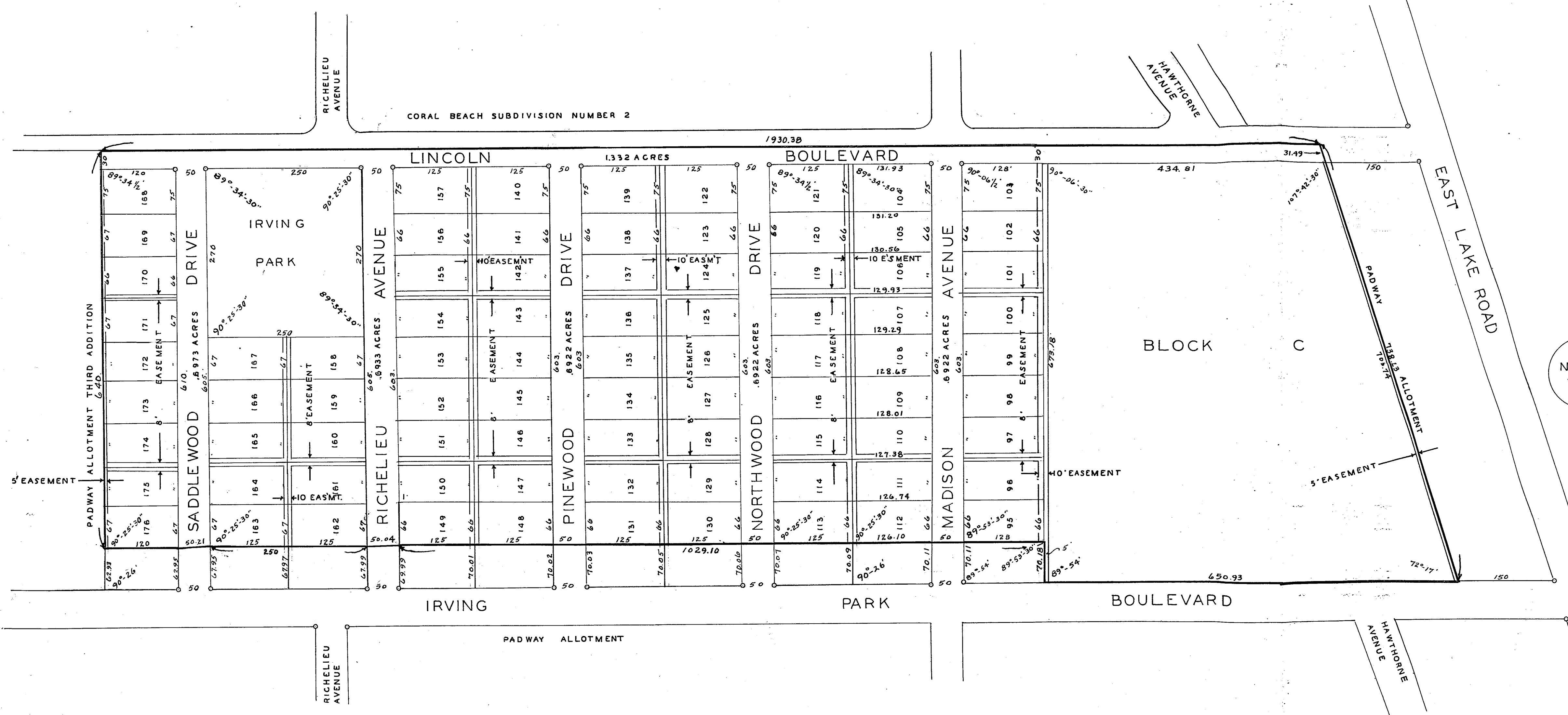
THIS IS TO CERTIFY THAT THE ABOVE PLAT WAS ACCEPTED BY THE COUNCIL OF THE VILLAGE OF SHEFFIELD LAKE, OHIO BY ORDINANCE NUMBER 1842 PASSED THIS 18TH DAY OF NOVEMBER, 1954

ELEANOR PISKURA CLERK OF COUNCIL

RECEIVED FOR RECORD NOV. 22, 1954 AT 1:22 O'CLOCK P.M.  
RECORDED NOV. 22, 1954 IN RECORD VOLUME 17 PAGE 16  
LEOTA B. MITCHELL LORAIN COUNTY RECORDER

*Partitions: Deed Vol. 614, Page 574  
For vacation of Lincoln Park Blvd, etc, see Deed Vol. 684 #515696*

RECORDING FEE \$41.30



THIS PLAT MADE AT THE REQUEST OF THE SHAW LAND COMPANY INCORPORATED EMBRACES 30.55 ACRES OF LAND IN ORIGINAL SHEFFIELD TOWNSHIP LOT NUMBER 36 NOW IN THE VILLAGE OF SHEFFIELD LAKE, LORAIN COUNTY, OHIO.

STREETS AND PARK AS SHOWN ARE DEDICATED TO PUBLIC USE.  
ALL MEASUREMENTS ARE IN FEET AND DECIMAL PARTS THERE OF.  
IRON PINS WERE FOUND OR SET AT ALL POINTS INDICATED THUS.

I HEREBY CERTIFY THE ABOVE TO BE CORRECT.  
SEAL J. B. NICHOLS REGISTERED SURVEYOR  
ENGINEER

THIS IS TO CERTIFY THAT I HAVE EXAMINED THE ABOVE PLAT AND HEREBY APPROVE THE SAME.  
I FIND THE MONUMENTS SET ARE SUFFICIENT TO DEFINE THE STREETS AS SHOWN.

SEAL JOHN PETSCH VILLAGE ENGINEER  
ENGINEER

I HEREBY CERTIFY THAT THE LAND HEREIN DEDICATED IS COVERED BY A PROPER CERTIFICATE OF TITLE AND THE DEDICATION IS HEREBY APPROVED AS TO FORM.

VILLAGE SOLICITOR  
TRANSFERRED NOV. 22, 1954 FRANK AYRES AUDITOR