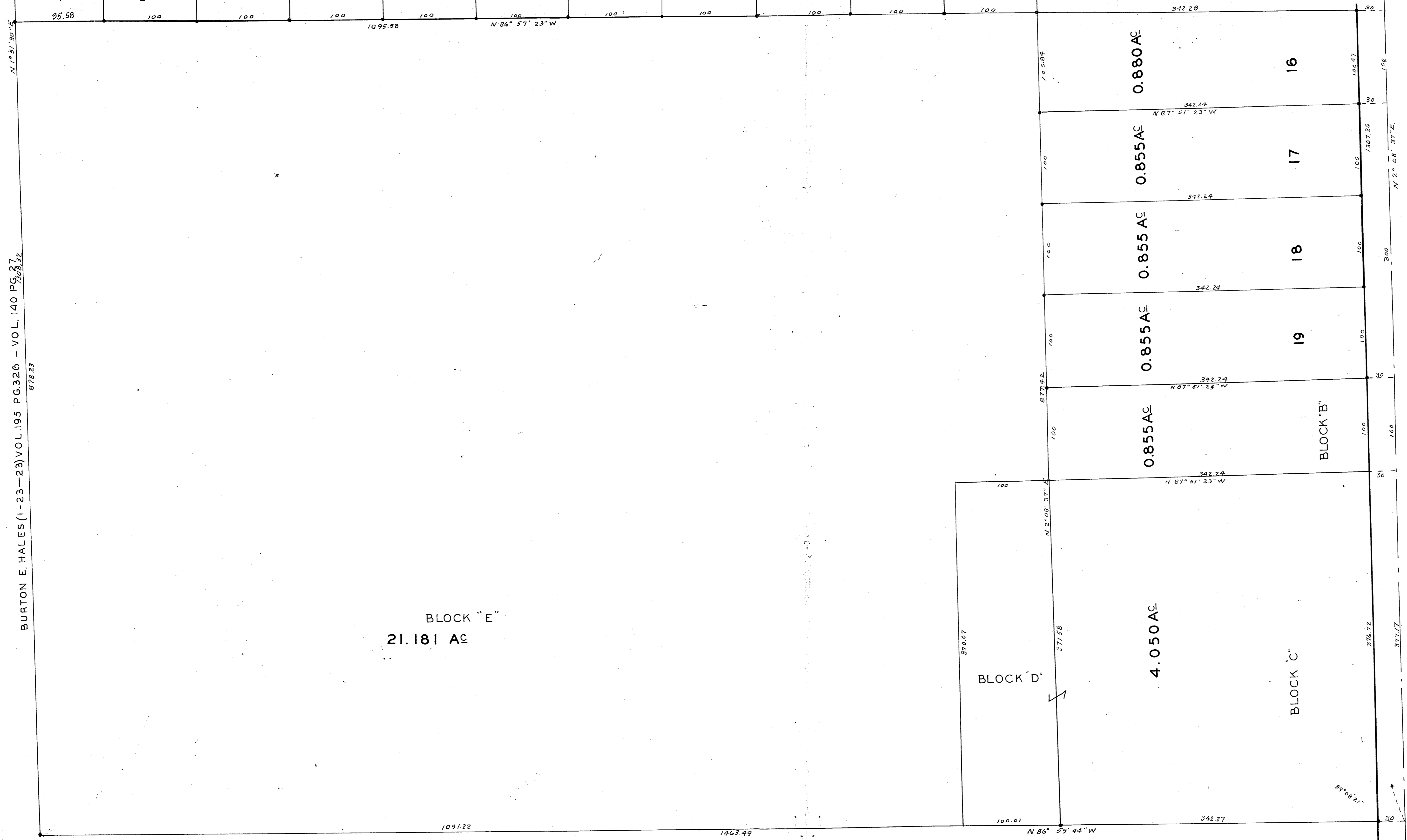


BURTON E. HALES (1-23-23) VOL. 195 PG. 326 - VOL. 140 PG. 27, 28, 32
878 23



BLOCK "E"
21.181 AC

BLOCK "D"
4.050 AC

0.855 AC

0.855 AC

0.855 AC

0.855 AC

0.880 AC

BLOCK "C"

BLOCK "B"

19

18

17

16

GORDON F. HALES (1-23-47) VOL. 406 PG. 131

HAWKE ROAD 60'

ELYRIA-TWINSBURG RD. ROUTE 82
Z. P. 45 SEP.

86-59-44
2-08-37
89-08-21

HAWKE — COOLEY ESTATES
BEING PART ORIGINAL LOT 7, EATON TOWNSHIP
LORAIN, COUNTY, O.