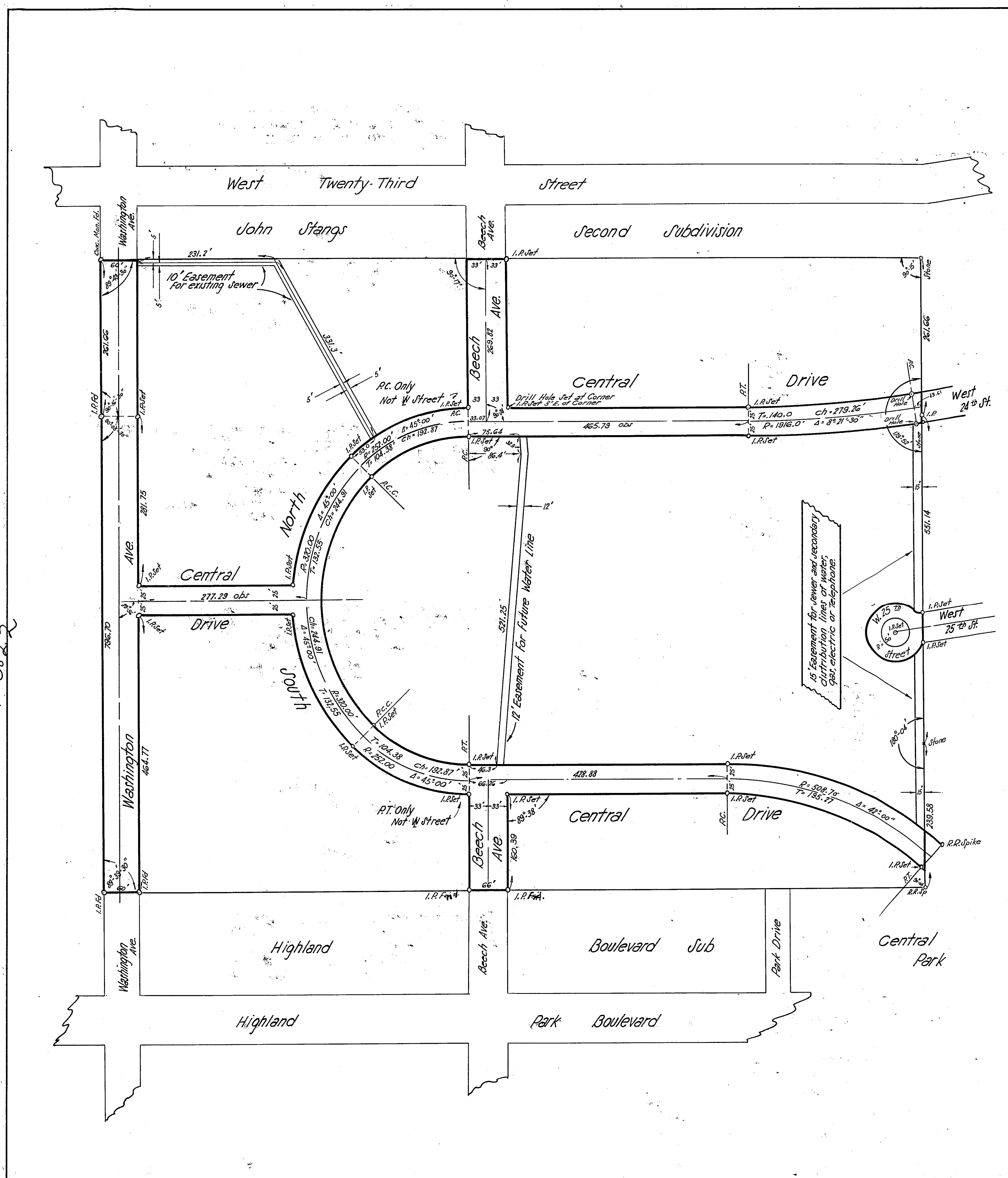


403022



403022

DEDICATION PLAT OF
North Central Drive.
South Central Drive.
Central Drive.
Beech Avenue.
Washington Avenue. and
Circular Extension of W. 25th Street
As outlined by heavy solid lines and
Easements for Utility Purposes
As shown by Red lines

Being part of Original Black River Township Tract No. 1,
 Lot No. 6, Lorain County, Ohio, Now in The City of
 Lorain, Ohio.
 Dimensions are shown hereon in Feet and Decimal parts
 Thereof.
 Monuments were found or set as shown hereon
 All of which I Certify to be Correct.
 November 15th 1949
 Scale 1" = 100'

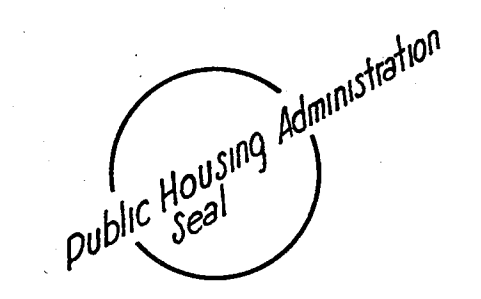
By J.B. Nichols - Registered Surveyor
J.B. Nichols



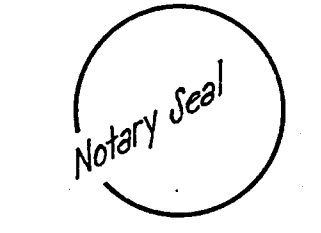
DEDICATION

The United States of America Owner of The
 Land embraced in this PLAT, here by dedicates
 to Public Use for street purposes the Areas as
 outlined hereon by Heavy Solid Lines and
 Easements for utility purposes as shown hereon
 by Red Lines

Shirley Bensch THE UNITED STATES OF AMERICA
Katherine H. Hines BY Hugo C. Schwartz
 Witnesses DIRECTOR DETROIT FIELD OFFICE
 PUBLIC HOUSING ADMINISTRATION.



County of Wayne
 State of Michigan: ss
 On The 2nd Day of December 1949, Before Me
 The Undersigned, A Notary Public, in and
 For said State and County, Personally appeared
 Hugo C. Schwartz, Director, Detroit Field Office
 duly authorized in the Premises and acknowledges
 the execution of this PLAT of Dedication for
 The Commissioner, on behalf of The United States of
 America, As Director, Detroit Field Office, Public
 Housing Administration.
 In witness whereof, I have hereunto set my hand
 And affixed my Official Seal, The Day, Month and Year
 Above Written Charles M. Thudis
 Notary Public
 Wayne County, Michigan
 My Commission Expires 10/22/51



This is to Certify that the above PLAT is hereby
 Approved on The 22nd day of November, 1949 by
 The Planning Commission of The City of Lorain, Ohio.

Stephanie J. Kodak
 Secretary

This is to Certify that I have examined The above PLAT.
 I find that the monuments found and set are sufficient
 To define the Street Lines

Laura E. Goodell
 City Engineer

The land embraced in North Central Drive, South Central Drive, Central
 Drive, Beech Avenue, Washington Ave and Circular
 Extension of West Twenty-Fifth Street, herein proposed
 to be Dedicated and shown hereon Outlined by
 Heavy Solid Lines, is free from any encumbrance.

Date November 22 1949
John S. Pascura Jr.
 City Solicitor

This is to Certify that the Streets hereon
 Dedicated are hereby accepted by the
 Council of the City of Lorain, Ohio, by
 Ordinance No 4122 Passed Dec 5 1949

Anthony Vignone
 Clerk of Council

No ~~TRANSFERRED~~ Necessary
 Feb 27 1950
Frank Ayres
 Auditor

Received for Record Jan 2 1950
 At 2:30 P.M. Recorded Mar 13 1950
 in Record Vol. 14 Page 42
Leta B. Mitchell
 Lorain County Recorder

* 17.50 Reading
Bea