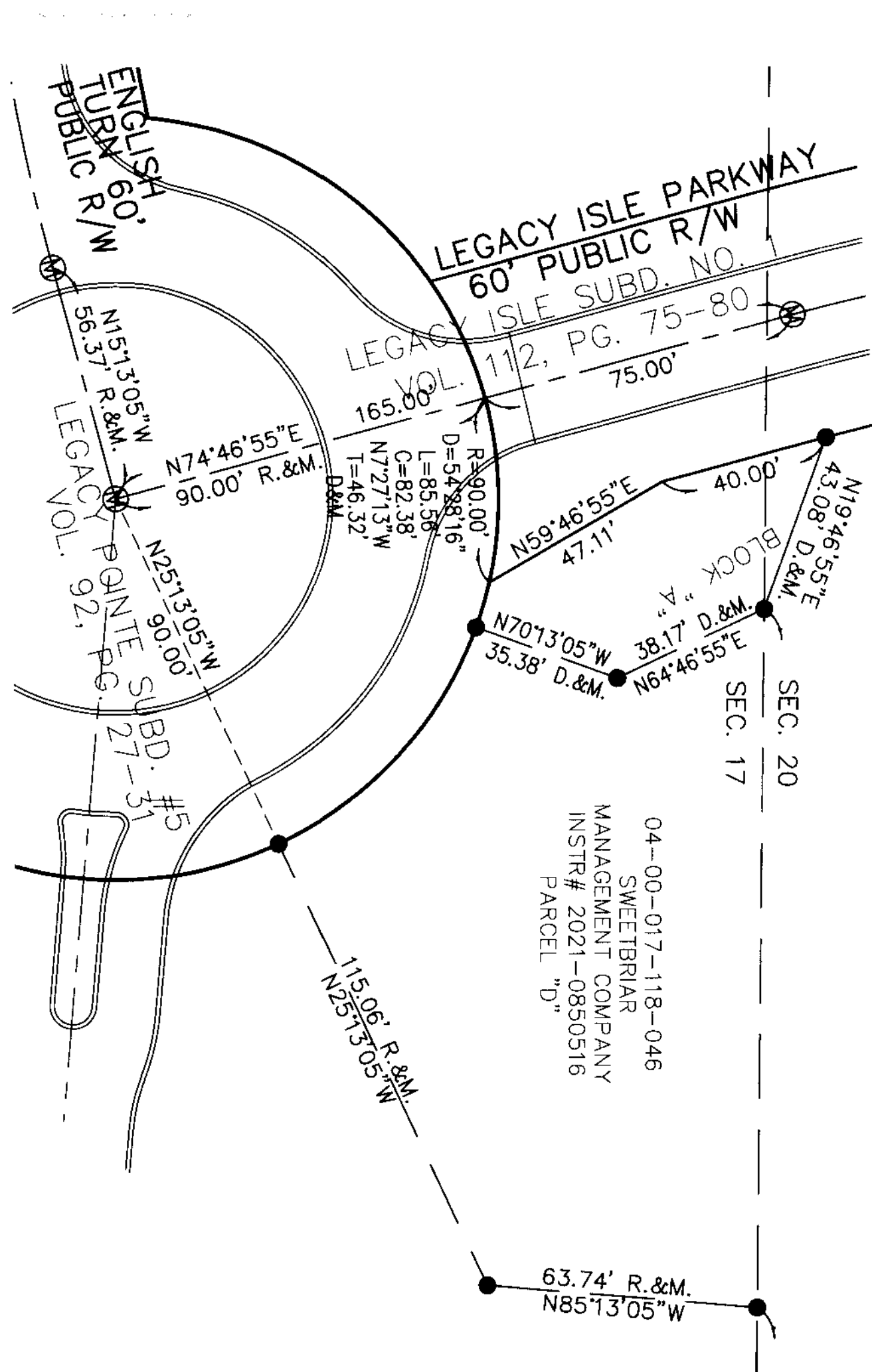


CONTINUED ON SHEET NO. 1



BEARINGS BASED ON LEGACY ISLE SUBDIVISION #1 PLAT

GRAPHIC SCALE

0 15 30 60

SCALE: 1" = 30'

- LEGEND**
- DENOTES 5/8" CAPPED (REITZ ENG) IRON PIN FOUND UNLESS OTHERWISE NOTED.
 - ⊙ DENOTES 30" LONG ~ 5/8" CAPPED (REITZ ENG) IRON PIN FOUND IN MONUMENT BOX.

NOTE:
LIMITED COMMON ELEMENTS INCLUDE THE LAND WITHIN 3 FEET FROM THE UNIT FOUNDATION SHOWN AND WITHIN 3 FEET OF ANY PATIOS, DECKS AND/OR PORCHES ADJACENT TO THE FOUNDATION OF EACH UNIT AND THE DRIVEWAY ADJACENT TO THE FOUNDATION WITHIN 18 FEET OF THE GARAGE DOOR.

EXIST. SOUTHERLY W.Q. POND DRAINAGE & STORM SEWER EASEMENT INST. #2021-0852193 (& GRANTED TO CITY OF AVON LAKE BY VOL. 112, PG. 75-80)

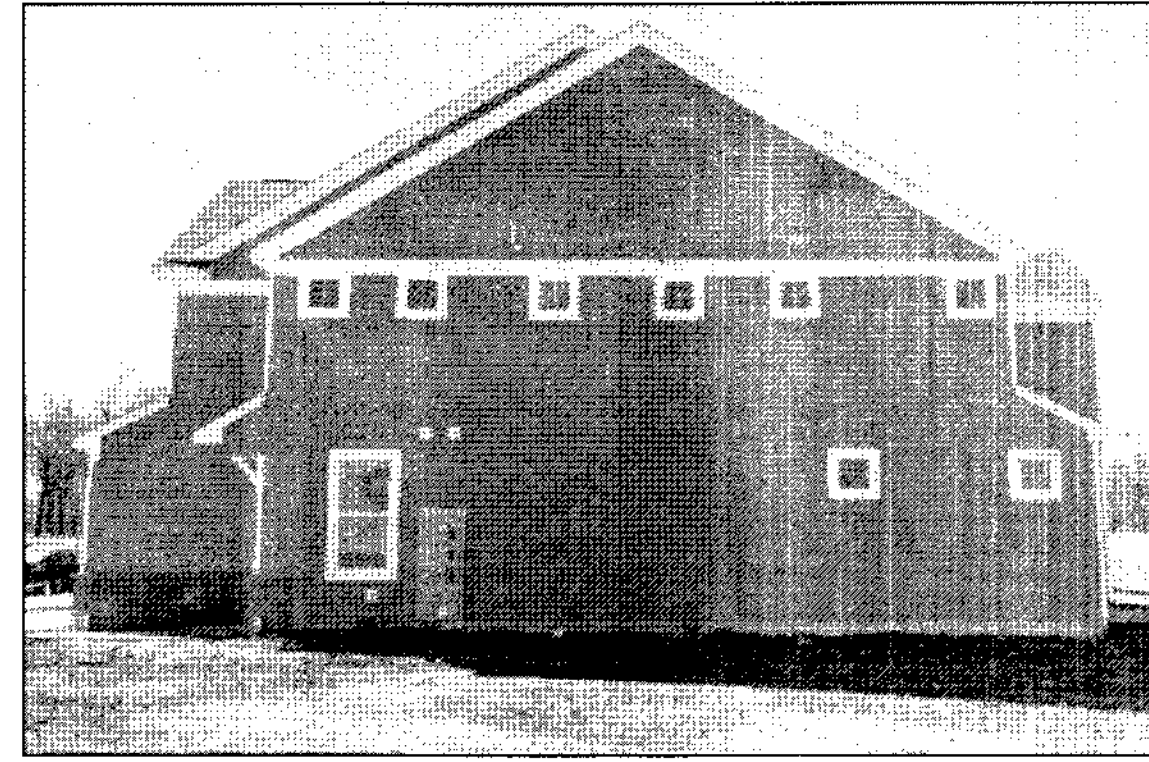
EXISTING GOLF COURSE
04-00-020-101-228 SWEETBRIAR MANAGEMENT COMPANY INSTR# 2021-0850520

EXIST. CLUSTER STORM DRAINAGE & STORM SEWER EASEMENT INST. #2021-0852193 (& GRANTED TO CITY OF AVON LAKE BY VOL. 112, PG. 75-80)

EXIST. EXPANSION OF SOUTHERLY WATER QUALITY POND DRAINAGE & STORM SEWER EASEMENT TO PULTE HOMES INSTR #20220872243 EXHIBIT "J-1" & "K-1" (& GRANTED TO CITY OF AVON LAKE BY VOL. 112, PG. 75-80)



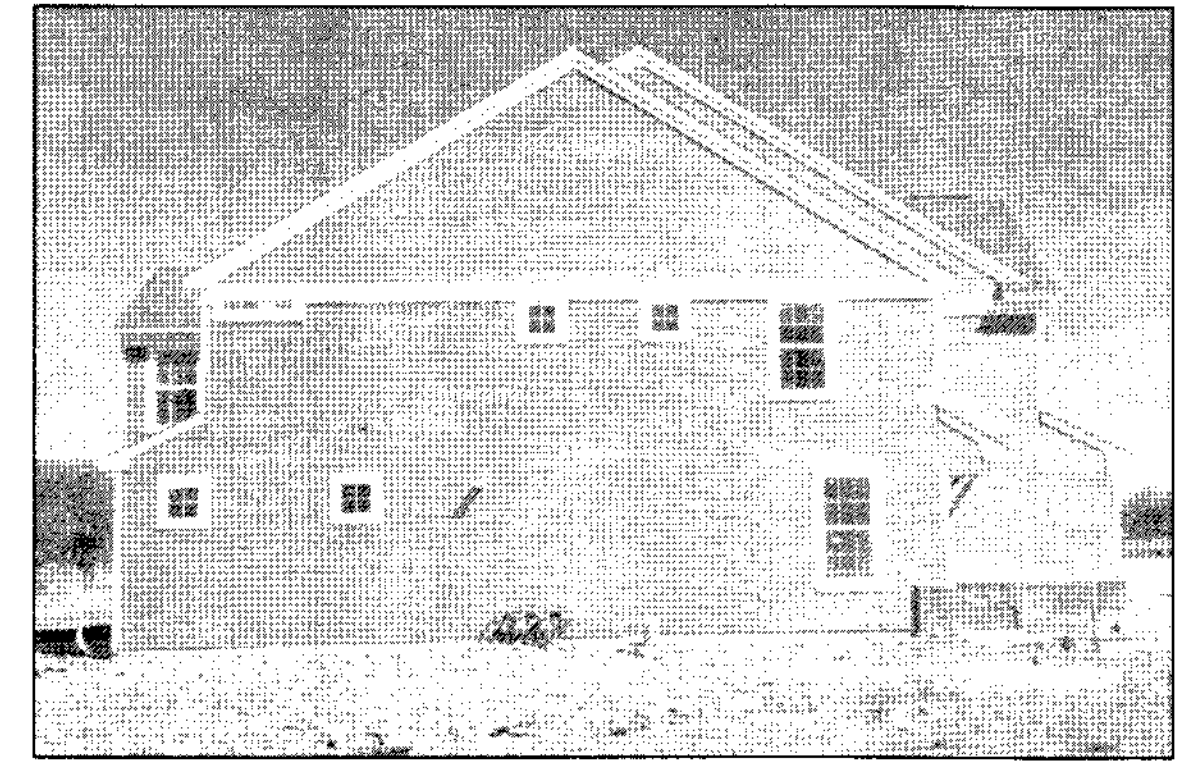
UNIT 11-13 FRONT



UNIT 11 SIDE



UNIT 11-13 REAR



UNIT 13 SIDE

