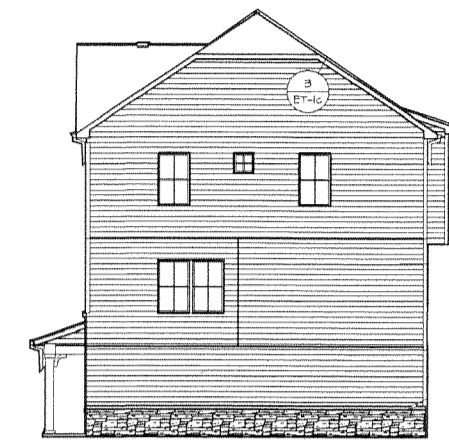


CONCORD VILLAGE NO. 2 CONDOMINIUMS PHASE 17

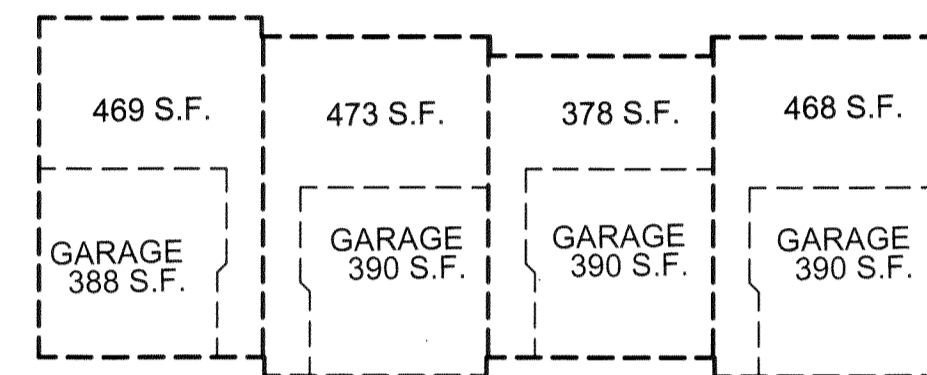
(UNITS 73, 74, 75, AND 76)
AND COMMON ELEMENT AREA
BEING A PART OF ORIGINAL
AVON TOWNSHIP SECTIONS 9 & 16
NOW IN THE CITY OF AVON
LORAIN COUNTY, STATE OF OHIO
FEBRUARY 1, 2022
SCALE 1 INCH = 20 FEET



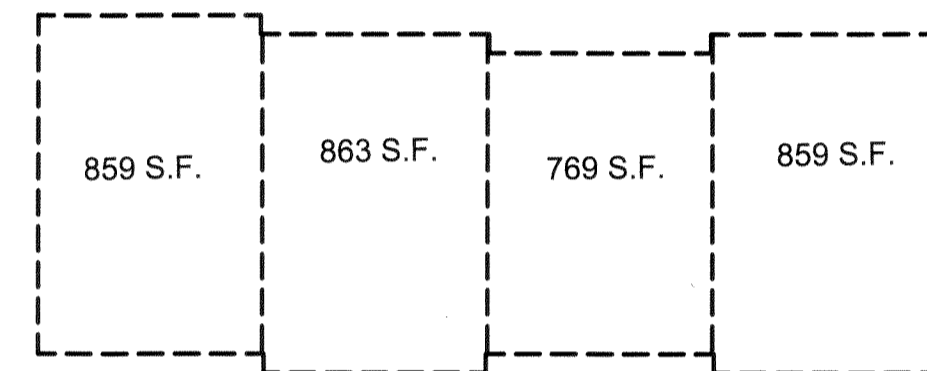
UNIT 76 SIDE ELEVATION



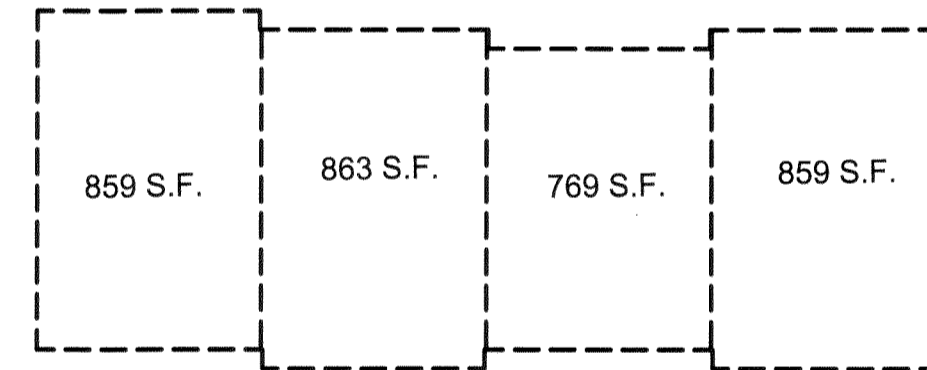
UNIT 73 SIDE ELEVATION



UNIT 76 LOWER LEVEL
UNIT 75 LOWER LEVEL
UNIT 74 LOWER LEVEL
UNIT 73 LOWER LEVEL



UNIT 76 1ST FLOOR
UNIT 75 1ST FLOOR
UNIT 74 1ST FLOOR
UNIT 73 1ST FLOOR



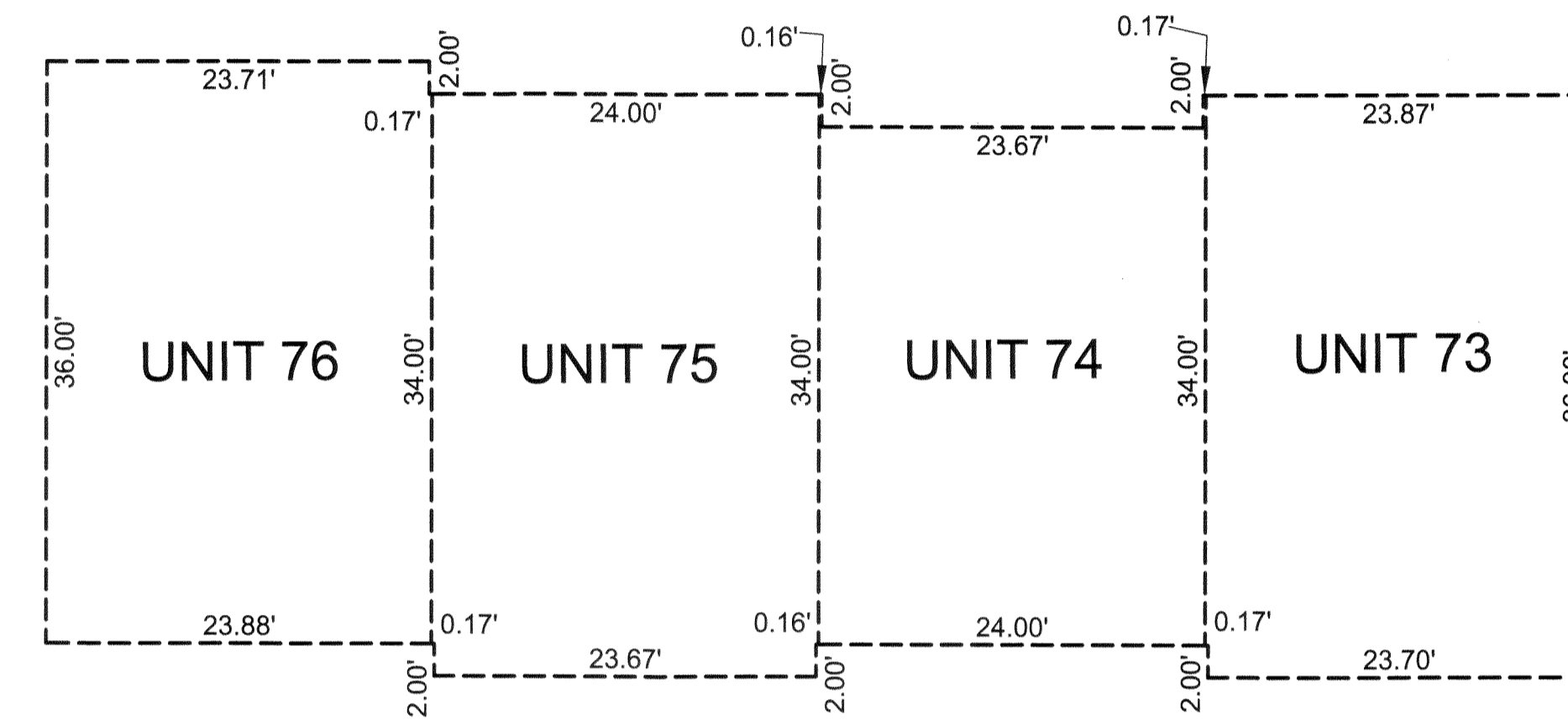
UNIT 76 2ND FLOOR
UNIT 75 2ND FLOOR
UNIT 74 2ND FLOOR
UNIT 73 2ND FLOOR



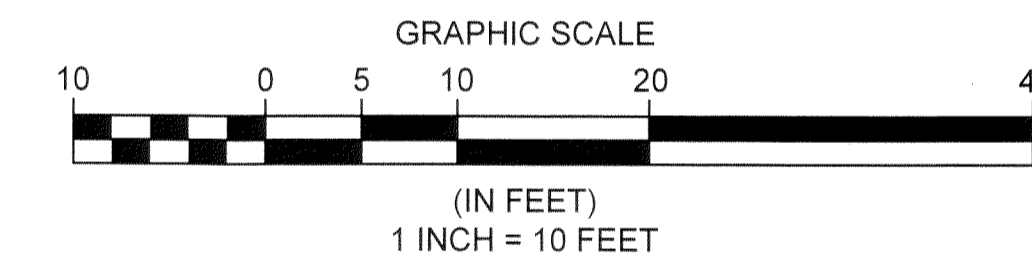
UNIT 73 REAR ELEVATION
UNIT 74 REAR ELEVATION
UNIT 75 REAR ELEVATION
UNIT 76 REAR ELEVATION



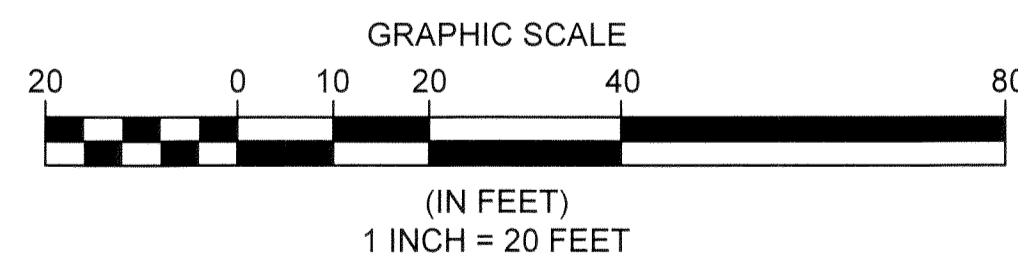
UNIT 76 FRONT ELEVATION
UNIT 75 FRONT ELEVATION
UNIT 74 FRONT ELEVATION
UNIT 73 FRONT ELEVATION



BUILDING DIMENSIONS
SCALE: 1 INCH = 10 FEET



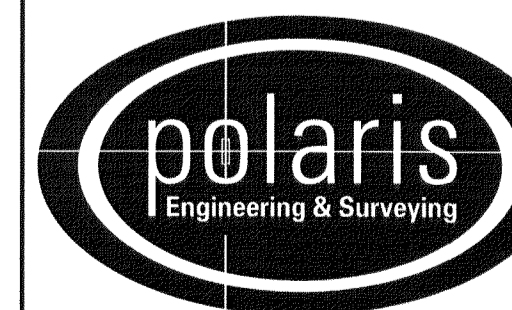
DETAIL: 1 INCH = 20 FEET



REV. No.	DATE	BY

DATE: 1/25/22 DRAWN: RMK
SCALE: HOR. 1"= 20' VERT. n/a
FOLDER: DWG/Proj_Surveying
FILENAME: Surv_Base/Condo_plats
TAB: 02-CONDO PLAT PH 17
BNDY. CHK: n/a
BASE. CHK: n/a

PHASE 17 CONDOMINIUM PLAT



POLARIS ENGINEERING & SURVEYING, INC.
34600 CHARDON ROAD - SUITE D
WILLOUGHBY HILLS, OHIO 44094
(440) 944-4433 (440) 944-3722 (Fax)
www.polaris-es.com

CONCORD VILLAGE NO. 2 CONDOMINIUMS

City of Avon - Lorain County - Ohio

CONTRACT No.

19071

SHEET	OF
2	2