

\\stone-local\clients\american structurepoint\c648-009-18 - LOR-113-03-75 ODOT D3\07 Maps Plans and Drawings\CAD and Survey\LOR-104864-Design\RM\Sheets\104864-RC001.dgn Sheet 5/28/2020 2:11

SETTING OF ALL MONUMENTS SHALL BE PERFORMED BY A SURVEYOR REGISTERED IN THE STATE OF OHIO. THE MONUMENT ASSEMBLIES AND REFERENCE MONUMENTS WILL BE INSTALLED BY THE CONTRACTOR AT THE TIME OF CONSTRUCTION. THE IRON PIN AND CAP (WHEN REQUIRED) ARE TO BE INSTALLED BY THE CONTRACTOR'S SURVEYOR.

CHANGES OR ALTERATIONS TO THE LOCATION OF ANY MONUMENTS SHOWN IN THIS TABLE, REQUIRE PRIOR APPROVAL FROM THE DISTRICT REAL ESTATE ADMINISTRATOR OF THE OHIO DEPARTMENT OF TRANSPORTATION. IN THE EVENT THAT CHANGES OR ALTERATIONS ARE APPROVED, A REVISED CENTERLINE PLAT WITH THE NEW LOCATIONS SHALL BE RECORDED IN THE APPLICABLE COUNTY RECORDS AND THE OHIO DEPARTMENT OF TRANSPORTATION. SPECIFICATIONS FOR MONUMENT ASSEMBLIES, REFERENCE MONUMENTS AND RIGHT OF WAY MONUMENTS ARE SHOWN ON STANDARD CONSTRUCTION DRAWING RM-1.1.

**LORAIN COUNTY
HENRIETTA TOWNSHIP
ORIGINAL LOT 87,
TWP. 5 N, RANGE 19 W
CONNECTICUT
WESTERN RESERVE**

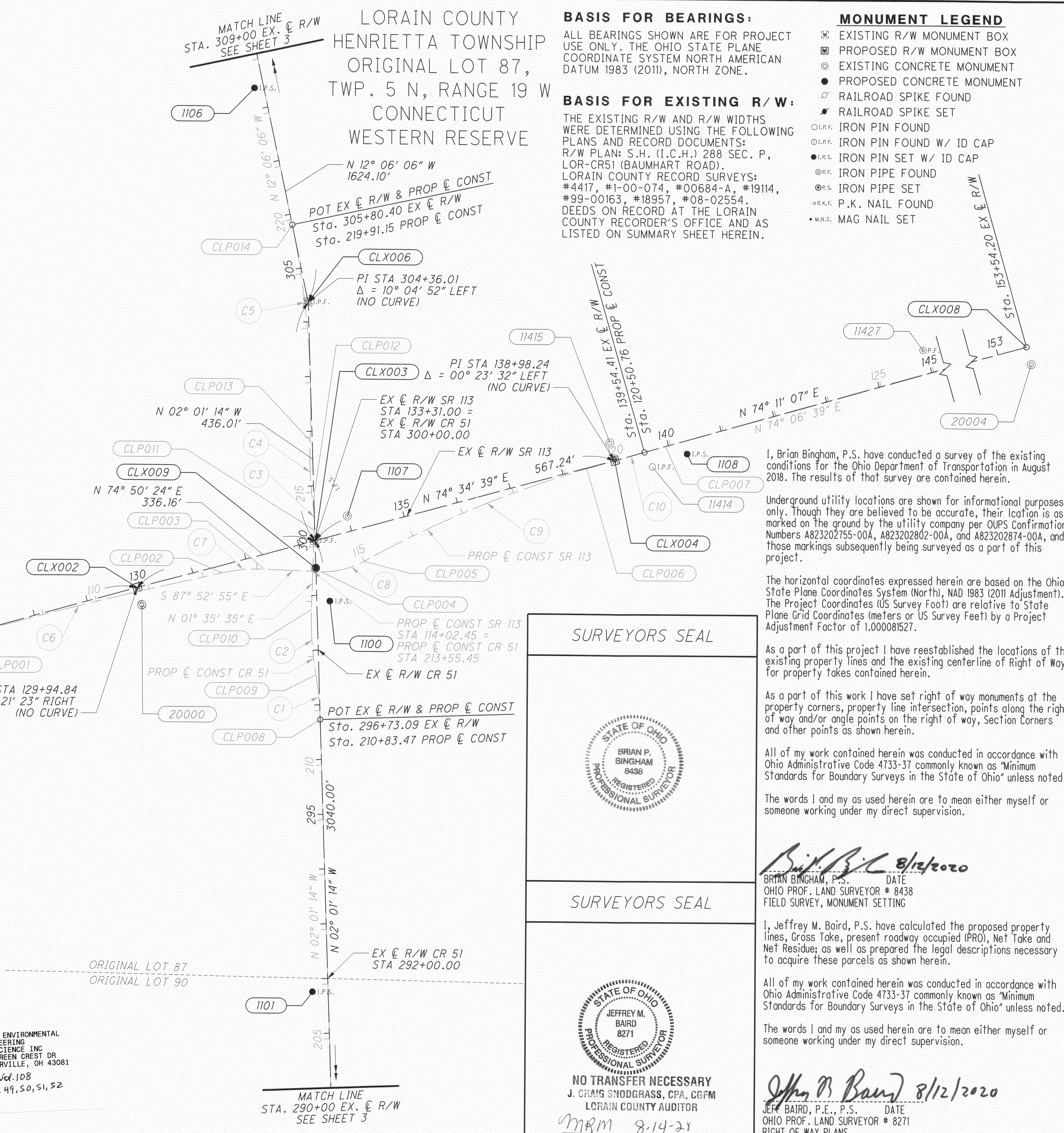
BASIS FOR BEARINGS:
 ALL BEARINGS SHOWN ARE FOR PROJECT USE ONLY. THE OHIO STATE PLANE COORDINATE SYSTEM NORTH AMERICAN DATUM 1983 (2011), NORTH ZONE.

BASIS FOR EXISTING R/W:
 THE EXISTING R/W AND R/W WIDTHS WERE DETERMINED USING THE FOLLOWING PLANS AND RECORD DOCUMENTS:
 R/W PLAN: S.H. (I.C.H.) 288 SEC. P, LOR-CR51 (BAUMHART ROAD).
 LORAIN COUNTY RECORD SURVEYS: #4417, #1-00-074, #00684-A, #19114, #99-00163, #18957, #08-02554.
 DEEDS ON RECORD AT THE LORAIN COUNTY RECORDER'S OFFICE AND AS LISTED ON SUMMARY SHEET HEREIN.

- MONUMENT LEGEND**
- ☐ EXISTING R/W MONUMENT BOX
 - ☐ PROPOSED R/W MONUMENT BOX
 - ⊙ EXISTING CONCRETE MONUMENT
 - PROPOSED CONCRETE MONUMENT
 - ⦿ RAILROAD SPIKE FOUND
 - ⦿ RAILROAD SPIKE SET
 - I.P.F. IRON PIN FOUND
 - I.P.F. IRON PIN FOUND W/ ID CAP
 - I.P.S. IRON PIN SET W/ ID CAP
 - ⦿ I.P.F. IRON PIPE FOUND
 - ⦿ I.P.S. IRON PIPE SET
 - ⦿ P.K.F. P.K. NAIL FOUND
 - ⦿ M.N.S. MAG NAIL SET

**CURVE DATA
PROP & CONST**

C1	C2	C3	C4
⊙ CONST CR 51	⊙ CONST CR 51	⊙ CONST CR 51	⊙ CONST CR 51
PC Sta. 210+83.47 PRC Sta. 211+65.98 Δ = 7° 49' 35" (LT) R = 604.00' Lc = 82.51' C = 82.44' C.B. = N 5° 56' 01" W	PRC Sta. 211+65.98 PT Sta. 212+85.78 Δ = 11° 26' 24" (RT) R = 600.00' Lc = 119.80' C = 119.60' C.B. = N 4° 07' 37" W	PC Sta. 214+30.50 PRC Sta. 214+79.07 Δ = 9° 16' 33" (LT) R = 300.00' Lc = 48.57' C = 48.52' C.B. = N 3° 02' 42" W	PRC Sta. 214+79.07 PRC Sta. 215+94.17 Δ = 9° 28' 32" (RT) R = 696.00' Lc = 115.10' C = 114.97' C.B. = N 2° 56' 42" W
	C5	C6	
	⊙ CONST CR 51	⊙ CONST SR 113	
	PRC Sta. 215+94.17 PT Sta. 219+91.15 Δ = 13° 53' 40" (LT) R = 1,637.02' Lc = 396.98' C = 396.01' C.B. = N 5° 09' 16" W	PC Sta. 107+19.16 PCC Sta. 112+36.47 Δ = 2° 45' 32" (RT) R = 10,742.96' Lc = 517.31' C = 517.26' C.B. = N 75° 56' 06" E	
C7	C8	C9	C10
⊙ CONST SR 113	⊙ CONST SR 113	⊙ CONST SR 113	⊙ CONST SR 113
PCC Sta. 112+36.47 PT Sta. 113+13.98 Δ = 14° 48' 13" (RT) R = 300.00' Lc = 77.51' C = 77.30' C.B. = N 84° 42' 58" E	PC Sta. 114+17.02 PRC Sta. 114+99.39 Δ = 31° 27' 52" (LT) R = 150.00' Lc = 82.37' C = 81.34' C.B. = N 76° 23' 09" E	PRC Sta. 114+99.39 PCC Sta. 119+41.41 Δ = 12° 39' 46" (RT) R = 2,000.00' Lc = 442.01' C = 441.11' C.B. = N 66° 59' 06" E	PCC Sta. 119+41.41 PT Sta. 120+90.39 Δ = 0° 47' 40" (RT) R = 10,742.96' L = 148.98' C = 148.98' C.B. = N 73° 42' 49" E



SURVEYORS SEAL

STATE OF OHIO
BRIAN P. BINGHAM
8438
REGISTERED PROFESSIONAL SURVEYOR

SURVEYORS SEAL

STATE OF OHIO
JEFFREY M. BAIRD
8271
REGISTERED PROFESSIONAL SURVEYOR

NO TRANSFER NECESSARY
J. CRAIG SNOODGRASS, CPA, CGFM
LORAIN COUNTY AUDITOR
MRM 8-14-21
DEPUTY

I, Brian Bingham, P.S. have conducted a survey of the existing conditions for the Ohio Department of Transportation in August 2018. The results of that survey are contained herein.

Underground utility locations are shown for informational purposes only. Though they are believed to be accurate, their location is as marked on the ground by the utility company per OUPS Confirmation Numbers A823202755-00A, A823202802-00A, and A823202874-00A, and those markings subsequently being surveyed as a part of this project.

The horizontal coordinates expressed herein are based on the Ohio State Plane Coordinates System (North), NAD 1983 (2011 Adjustment). The Project Coordinates (US Survey Foot) are relative to State Plane Grid Coordinates (meters or US Survey Feet) by a Project Adjustment Factor of 1.000081527.

As a part of this project I have reestablished the locations of the existing property lines and the existing centerline of Right of Way for property takes contained herein.

As a part of this work I have set right of way monuments at the property corners, property line intersection, points along the right of way and/or angle points on the right of way, Section Corners and other points as shown herein.

All of my work contained herein was conducted in accordance with Ohio Administrative Code 4733-37 commonly known as "Minimum Standards for Boundary Surveys in the State of Ohio" unless noted.

The words I and my as used herein are to mean either myself or someone working under my direct supervision.

Brian P. Bingham 8/12/2020
 BRIAN BINGHAM, P.S. DATE
 OHIO PROF. LAND SURVEYOR # 8438
 FIELD SURVEY, MONUMENT SETTING

I, Jeffrey M. Baird, P.S. have calculated the proposed property lines, Gross Take, present roadway occupied (PRO), Net Take and Net Residue; as well as prepared the legal descriptions necessary to acquire these parcels as shown herein.

All of my work contained herein was conducted in accordance with Ohio Administrative Code 4733-37 commonly known as "Minimum Standards for Boundary Surveys in the State of Ohio" unless noted.

The words I and my as used herein are to mean either myself or someone working under my direct supervision.

Jeffrey M. Baird 8/12/2020
 JEFF BAIRD, P.E., P.S. DATE
 OHIO PROF. LAND SURVEYOR # 8271
 RIGHT OF WAY PLANS

RECEIVED _____, 20____
 RECORDED _____, 20____
 BOOK _____ PAGE _____
 COUNTY RECORDER

STONE ENVIRONMENTAL
 ENGINEERING
 AND SCIENCE INC
 748 GREEN CREST DR
 WESTERVILLE, OH 43081
 Plat Vol 108
 Pgs. 49, 50, 51, 52

CENTERLINE PLAT

PID NO. 104864

R/W DESIGNER TDF JMB
 R/W REVIEWER JMB

2 / 21

93
112

PROJECT GROUND COORDINATES - US SURVEY FEET

STATE PLANE GRID COORDINATES

MONUMENTS TO BE SET

PROJECT COORDINATES (FEET) ARE RELATIVE TO STATE PLANE GRID COORDINATES (METERS)

PROJECT CONTROL POINTS

HORIZONTAL DATUM - NAD83 (2011), OHIO NORTH ZONE (3401) FROM CORS

DURING CONSTRUCTION

BY A PROJECT ADJUSTMENT FACTOR (PAF) MULTIPLIER OF : 3.281100809

VERTICAL DATUM NAVD 88: BASE01 DEFINED BY GPS FROM CORS USING GEOID 12B

ITEM 623E38500 ITEM 623E40500

Table with columns: NAME, STATION, C/L OF RIGHT OF WAY, OFFSET (ft), RT/LT, NORTH (ft), EAST (ft), ELEVATION (ft), FEATURE, DESCRIPTION. Rows 1100-1109.

Table with columns: NAME, STATION, NORTH (m), EAST (m), ORTHO HT (m), NORTH (US FT), EAST (US FT). Rows 1100-1109.

Table with columns: NAME, STATION, NORTH (m), EAST (m), ORTHO HT (m), NORTH (US FT), EAST (US FT). Rows 1100-1109.

Table with columns: MONUMENT ASSEMBLY, REFERENCE MONUMENT. Rows 1100-1109.

EXISTING MONUMENTATION

CENTERLINE OF RIGHT OF WAY

EXISTING CENTERLINE CONTROL POINTS

HORZ. DATUM - NAD83 (2011), OHIO NORTH ZONE

VERT. DATUM - NAVD88

Table with columns: NAME, STATION, OFFSET (ft), RT/LT, NORTH (ft), EAST (ft), ELEVATION (ft), FEATURE, DESCRIPTION. Rows 11001-11002.

Table with columns: NAME, STATION, NORTH (m), EAST (m), ORTHO HT (m), NORTH (US FT), EAST (US FT). Rows 11001-11002.

Table with columns: NAME, STATION, NORTH (m), EAST (m), ORTHO HT (m), NORTH (US FT), EAST (US FT). Rows 11001-11002.

Table with columns: MONUMENT ASSEMBLY, REFERENCE MONUMENT. Rows 11001-11002.

CENTERLINE OF RIGHT OF WAY & CONSTRUCTION

CENTERLINE ALIGNMENT

HORZ. DATUM - NAD83 (2011), OHIO NORTH ZONE

VERT. DATUM - NAVD88

Table with columns: NAME, STATION, OFFSET (ft), RT/LT, NORTH (ft), EAST (ft), ELEVATION (ft), FEATURE, DESCRIPTION. Rows CLX001-CLX007, CLP001-CLP013, CLX007.

Table with columns: NAME, STATION, NORTH (m), EAST (m), ORTHO HT (m), NORTH (US FT), EAST (US FT). Rows CLX001-CLX007, CLP001-CLP013, CLX007.

Table with columns: NAME, STATION, NORTH (m), EAST (m), ORTHO HT (m), NORTH (US FT), EAST (US FT). Rows CLX001-CLX007, CLP001-CLP013, CLX007.

Table with columns: MONUMENT ASSEMBLY, REFERENCE MONUMENT. Rows CLX001-CLX007, CLP001-CLP013, CLX007.

TOTAL MONUMENTS - QUANTITY CARRIED TO GENERAL SUMMARY

3 1

PROJECT GROUND COORDINATES - US SURVEY FEET

PROJECT COORDINATES (US SURVEY FEET) ARE RELATIVE TO STATE PLANE GRID COORDINATES (METERS)

EXISTING RIGHT-OF-WAY POINTS

STATE PLANE GRID COORDINATES

HORIZONTAL DATUM - NAD83 (2011), OHIO NORTH ZONE (3401) FROM CORS

BY A PROJECT ADJUSTMENT FACTOR (PAF) MULTIPLIER OF : 3.281100809

VERTICAL DATUM NAVD 88: BASE01 DEFINED BY GPS FROM CORS USING GEOID 12B

Table with columns: NAME, STATION, C/L OF RIGHT OF WAY, OFFSET (ft), RT/LT, NORTH (ft), EAST (ft), ELEVATION (ft), FEATURE, DESCRIPTION. Rows 11270, 11415, 20000, 20004.

Table with columns: NAME, STATION, NORTH (m), EAST (m), ORTHO HT (m), NORTH (US FT), EAST (US FT). Rows 11270, 11415, 20000, 20004.

Table with columns: NAME, STATION, NORTH (m), EAST (m), ORTHO HT (m), NORTH (US FT), EAST (US FT). Rows 11270, 11415, 20000, 20004.

Table with columns: MONUMENT ASSEMBLY, REFERENCE MONUMENT. Rows 11270, 11415, 20000, 20004.

PROJECT ADJUSTMENT FACTOR BASED ON: Inverse of the published combined scale factor as reported on the data sheet for Lorain County Auditor's Office Geodetic Survey Marker designated "2006-32" (Point 1107)

* - PLAN S.H. (I.C.H.) 288 SEC. P, LOR-CR51 (BAUMHART ROAD) USED FOR ALIGNMENT

UNITLESS FACTOR = 1.000081527 State Plane Grid to Project Ground (same units)

STATION AND OFFSET VALUES ARE REFERENCED TO THE CENTERLINE OF RIGHT-OF-WAY OR CENTERLINE OF CONSTRUCTION AS DESIGNATED BELOW:

PROJECT ADJ. FACTOR = 3.281100809 State Plane Grid (meters) to Project Ground (US Survey Feet)

ENG./METRIC CONV. = 3.28083333 US SURVEY FOOT TO METERS CONVERSION FACTOR

Control point horizontal positions were established by averaging multiple VRS derived GNSS observations. Elevations were derived through conventional leveling holding the VRS derived position for 1100. All positions are in conformance to the ODOT Surveying and Mapping Specifications.

PROJECT Coordinates are Scaled From GRID Coordinates About The OHIO NORTH ZONE Grid Point N=0,E=0.

PID NO. 104864

R/W DESIGNER TDF R/W REVIEWER JMB

CENTERLINE PLAT

LOR-113-03.75

4 / 21

95 112

\stone-local\CLIENTS\American Structurepoint\CG48-009-ig - LOR-113-03.75 - OD01 D3\07 Maps Plans and Drawings\CAD and Survey\LOR\104864\Design\RW\Sheets\104864.dgn Sheet 5/28/2020 2:

PROJECT GROUND COORDINATES - US SURVEY FEET								PROPOSED RIGHT OF WAY MONUMENTS	STATE PLANE GRID COORDINATES					MONUMENTS TO BE RESET AFTER CONSTRUCTION		
PROJECT COORDINATES (US SURVEY FEET) ARE RELATIVE TO STATE PLANE GRID COORDINATES (METERS) BY A PROJECT ADJUSTMENT FACTOR (PAF) MULTIPLIER OF : 3.281100809									HORIZONTAL DATUM - NAD83 (2011), OHIO NORTH ZONE (3401) FROM CORS VERTICAL DATUM NAVD 88: BASE01 DEFINED BY GPS FROM CORS USING GEOID 12B					ITEM 623E40520	ITEM 623	
C/L OF RIGHT OF WAY SR 113				*					DESCRIPTION	NAME	NORTH (m)	EAST (m)	ORTHO HT (m)	NORTH (US FT)	EAST (US FT)	RIGHT OF WAY PIN (TYPE "B")
NAME	STATION	OFFSET (ft)	RT/LT	NORTH (ft)	EAST (ft)	ELEVATION (ft)	FEATURE	NORTH (m)								EAST (m)
RW001	126+30.00 (1A)	33.00	LT	612239.231	2029801.702	0.00	IPINS	3/4" x 30" REBAR WITH A 2 INCH DIAMETER ALUMINUM CAP STAMPED "ODOT RW - PS 8438"	RW001	186595.678	618634.361	0.00	612189.321	2029636.232		
RW002	126+30.00 (1A)	33.00	RT	612175.636	2029819.358	0.00	IPINS	3/4" x 30" REBAR WITH A 2 INCH DIAMETER ALUMINUM CAP STAMPED "ODOT RW - PS 8438"	RW002	186576.296	618639.742	0.00	612125.731	2029653.887		
RW003	126+80.00 (1A)	48.00	LT	612267.060	2029845.867	0.00	IPINS	3/4" x 30" REBAR WITH A 2 INCH DIAMETER ALUMINUM CAP STAMPED "ODOT RW - PS 8438"	RW003	186604.160	618647.821	0.00	612217.147	2029680.394		
RW004	126+70.00 (1A)	46.00	RT	612173.810	2029861.378	0.00	IPINS	3/4" x 30" REBAR WITH A 2 INCH DIAMETER ALUMINUM CAP STAMPED "ODOT RW - PS 8438"	RW004	186575.740	618652.549	0.00	612123.906	2029695.903		
RW005	128+15.00 (1A)	48.00	RT	612210.673	2030001.628	0.00	IPINS	3/4" x 30" REBAR WITH A 2 INCH DIAMETER ALUMINUM CAP STAMPED "ODOT RW - PS 8438"	RW005	186586.974	618695.293	0.00	612160.765	2029836.142		
RW006	130+35.00 (1A)	75.00	RT	612243.145	2030220.449	0.00	IPINS	3/4" x 30" REBAR WITH A 2 INCH DIAMETER ALUMINUM CAP STAMPED "ODOT RW - PS 8438"	RW006	186596.871	618761.985	0.00	612193.235	2030054.945		
RW007	129+25.00 (1A)	48.00	LT	612332.600	2030081.938	0.00	IPINS	3/4" x 30" REBAR WITH A 2 INCH DIAMETER ALUMINUM CAP STAMPED "ODOT RW - PS 8438"	RW007	186624.135	618719.770	0.00	612282.683	2029916.445		
RW008	131+80.00 (1A)	82.00	RT	612274.309	2030362.234	0.00	IPINS	3/4" x 30" REBAR WITH A 2 INCH DIAMETER ALUMINUM CAP STAMPED "ODOT RW - PS 8438"	RW008	186606.369	618805.197	0.00	612224.396	2030196.718		
RW009	130+25.00 (1A)	44.00	LT	612355.389	2030179.677	0.00	IPINS	3/4" x 30" REBAR WITH A 2 INCH DIAMETER ALUMINUM CAP STAMPED "ODOT RW - PS 8438"	RW009	186631.080	618749.558	0.00	612305.469	2030014.176		
RW010	131+95.00 (1A)	44.00	LT	612399.847	2030343.761	0.00	IPINS	3/4" x 30" REBAR WITH A 2 INCH DIAMETER ALUMINUM CAP STAMPED "ODOT RW - PS 8438"	RW010	186644.630	618799.567	0.00	612349.924	2030178.247		
RW011	131+95.00 (1A)	59.00	LT	612414.325	2030339.838	0.00	IPINS	3/4" x 30" REBAR WITH A 2 INCH DIAMETER ALUMINUM CAP STAMPED "ODOT RW - PS 8438"	RW011	186649.043	618798.372	0.00	612364.400	2030174.324		
RW012	132+10.00 (1A)	59.00	LT	612418.247	2030354.316	0.00	IPINS	3/4" x 30" REBAR WITH A 2 INCH DIAMETER ALUMINUM CAP STAMPED "ODOT RW - PS 8438"	RW012	186650.238	618802.784	0.00	612368.323	2030188.801		
RW013	132+10.00 (1A)	44.00	LT	612403.769	2030358.239	0.00	IPINS	3/4" x 30" REBAR WITH A 2 INCH DIAMETER ALUMINUM CAP STAMPED "ODOT RW - PS 8438"	RW013	186645.826	618803.980	0.00	612353.846	2030192.723		
RW014	133+99.07 (1A)	69.96	LT	612478.486	2030533.551	0.00	IPINS	3/4" x 30" REBAR WITH A 2 INCH DIAMETER ALUMINUM CAP STAMPED "ODOT RW - PS 8438"	RW014	186668.597	618857.411	0.00	612428.557	2030368.021		
RW015	134+08.80 (1A)	67.64	LT	612478.839	2030543.545	0.00	IPINS	3/4" x 30" REBAR WITH A 2 INCH DIAMETER ALUMINUM CAP STAMPED "ODOT RW - PS 8438"	RW015	186668.705	618860.457	0.00	612428.910	2030378.105		
RW016	134+02.12 (1A)	39.62	LT	612450.050	2030544.561	0.00	IPINS	3/4" x 30" REBAR WITH A 2 INCH DIAMETER ALUMINUM CAP STAMPED "ODOT RW - PS 8438"	RW016	186659.931	618860.766	0.00	612400.123	2030379.030		
RW017	134+10.26 (1A)	33.00	LT	612445.835	2030554.171	0.00	IPINS	3/4" x 30" REBAR WITH A 2 INCH DIAMETER ALUMINUM CAP STAMPED "ODOT RW - PS 8438"	RW017	186658.646	618863.695	0.00	612395.908	2030388.640		
RW018	135+65.00 (1A)	80.00	RT	612378.055	2030733.387	0.00	IPINS	3/4" x 30" REBAR WITH A 2 INCH DIAMETER ALUMINUM CAP STAMPED "ODOT RW - PS 8438"	RW018	186637.988	618918.316	0.00	612328.134	2030567.841		
RW019	136+16.06 (1A)	33.00	LT	612500.565	2030752.560	0.00	IPINS	3/4" x 30" REBAR WITH A 2 INCH DIAMETER ALUMINUM CAP STAMPED "ODOT RW - PS 8438"	RW019	186675.327	618924.159	0.00	612450.634	2030587.013		
RW020	138+05.00 (1A)	50.00	RT	612470.799	2030956.766	0.00	IPINS	3/4" x 30" REBAR WITH A 2 INCH DIAMETER ALUMINUM CAP STAMPED "ODOT RW - PS 8438"	RW020	186666.255	618986.396	0.00	612420.870	2030791.202		
RW021	136+80.00 (1A)	46.00	LT	612530.100	2030810.738	0.00	IPINS	3/4" x 30" REBAR WITH A 2 INCH DIAMETER ALUMINUM CAP STAMPED "ODOT RW - PS 8438"	RW021	186684.328	618941.891	0.00	612480.166	2030645.186		
RW022	139+40.00 (1A)	46.00	RT	612510.915	2031086.064	0.00	IPINS	3/4" x 30" REBAR WITH A 2 INCH DIAMETER ALUMINUM CAP STAMPED "ODOT RW - PS 8438"	RW022	186678.481	619025.803	0.00	612460.983	2030920.490		
RW023	138+55.00 (1A)	46.00	LT	612576.639	2030979.436	0.00	IPINS	3/4" x 30" REBAR WITH A 2 INCH DIAMETER ALUMINUM CAP STAMPED "ODOT RW - PS 8438"	RW023	186698.512	618993.306	0.00	612526.702	2030813.870		
RW024	139+60.17 (1A)	41.63	RT	612520.615	2031104.277	0.00	IPINS	3/4" x 30" REBAR WITH A 2 INCH DIAMETER ALUMINUM CAP STAMPED "ODOT RW - PS 8438"	RW024	186681.437	619031.354	0.00	612470.682	2030938.701		
RW025	138+81.98 (1A)	33.00	LT	612571.283	2031008.905	0.00	IPINS	3/4" x 30" REBAR WITH A 2 INCH DIAMETER ALUMINUM CAP STAMPED "ODOT RW - PS 8438"	RW025	186696.880	619002.287	0.00	612521.346	2030843.337		
RW026	140+00.00 (1A)	33.00	RT	612539.775	2031140.250	0.00	IPINS	3/4" x 30" REBAR WITH A 2 INCH DIAMETER ALUMINUM CAP STAMPED "ODOT RW - PS 8438"	RW026	186687.277	619042.318	0.00	612489.840	2030974.671		
RW027	293+90.00 (2A)	30.00	LT	611782.267	2030478.063	0.00	IPINS	3/4" x 30" REBAR WITH A 2 INCH DIAMETER ALUMINUM CAP STAMPED "ODOT RW - PS 8438"	RW027	186456.407	618840.499	0.00	611732.394	2030312.538		
RW028	293+90.00 (2A)	30.00	RT	611784.382	2030538.026	0.00	IPINS	3/4" x 30" REBAR WITH A 2 INCH DIAMETER ALUMINUM CAP STAMPED "ODOT RW - PS 8438"	RW028	186457.051	618858.775	0.00	611734.509	2030372.496		
RW029	294+10.00 (2A)	40.00	LT	611801.902	2030467.364	0.00	IPINS	3/4" x 30" REBAR WITH A 2 INCH DIAMETER ALUMINUM CAP STAMPED "ODOT RW - PS 8438"	RW029	186462.391	618837.238	0.00	611752.028	2030301.840		
RW030	294+10.00 (2A)	45.00	RT	611804.898	2030552.311	0.00	IPINS	3/4" x 30" REBAR WITH A 2 INCH DIAMETER ALUMINUM CAP STAMPED "ODOT RW - PS 8438"	RW030	186463.304	618863.128	0.00	611755.024	2030386.780		
RW031	295+90.00 (2A)	55.00	LT	611981.261	2030446.027	0.00	IPINS	3/4" x 30" REBAR WITH A 2 INCH DIAMETER ALUMINUM CAP STAMPED "ODOT RW - PS 8438"	RW031	186517.055	618830.735	0.00	611931.372	2030280.505		
RW032	294+40.00 (2A)	60.00	RT	611835.409	2030566.244	0.00	IPINS	3/4" x 30" REBAR WITH A 2 INCH DIAMETER ALUMINUM CAP STAMPED "ODOT RW - PS 8438"	RW032	186472.603	618867.375	0.00	611785.532	2030400.712		
RW033	296+90.00 (2A)	75.00	RT	612085.782	2030572.421	0.00	IPINS	3/4" x 30" REBAR WITH A 2 INCH DIAMETER ALUMINUM CAP STAMPED "ODOT RW - PS 8438"	RW033	186548.911	618869.257	0.00	612035.885	2030406.888		
RW034	303+15.00 (2A)	50.00	RT	612709.512	2030525.401	0.00	IPINS	3/4" x 30" REBAR WITH A 2 INCH DIAMETER ALUMINUM CAP STAMPED "ODOT RW - PS 8438"	RW034	186739.009	618854.927	0.00	612659.564	2030359.824		
RW035	303+35.00 (2A)	30.00	LT	612726.679	2030444.746	0.00	IPINS	3/4" x 30" REBAR WITH A 2 INCH DIAMETER ALUMINUM CAP STAMPED "ODOT RW - PS 8438"	RW035	186744.241	618830.345	0.00	612676.729	2030279.222		
RW036	303+42.63 (2A)	53.00	RT	612737.229	2030527.425	0.00	IPINS	3/4" x 30" REBAR WITH A 2 INCH DIAMETER ALUMINUM CAP STAMPED "ODOT RW - PS 8438"	RW036	186747.456	618855.544	0.00	612687.279	2030361.896		
RW037	304+35.00 (2A)	53.00	RT	612829.543	2030524.168	0.00	IPINS	3/4" x 30" REBAR WITH A 2 INCH DIAMETER ALUMINUM CAP STAMPED "ODOT RW - PS 8438"	RW037	186775.591	618854.551	0.00	612779.585	2030358.639		
RW038	304+70.00 (2A)	30.00	RT	612868.208	2030493.374	0.00	IPINS	3/4" x 30" REBAR WITH A 2 INCH DIAMETER ALUMINUM CAP STAMPED "ODOT RW - PS 8438"	RW038	186787.375	618845.166	0.00	612818.247	2030327.848		
RW039	297+85.00 (2A)	90.00	LT	612174.906	2030404.174	0.00	IPINS	3/4" x 30" REBAR WITH A 2 INCH DIAMETER ALUMINUM CAP STAMPED "ODOT RW - PS 8438"	RW039	186576.074	618817.980	0.00	612125.001	2030238.655		
RW040	298+20.00 (2A)	75.00	RT	612215.701	2030567.838	0.00	IPINS	3/4" x 30" REBAR WITH A 2 INCH DIAMETER ALUMINUM CAP STAMPED "ODOT RW - PS 8438"	RW040	186588.507	618867.860	0.00	612165.793	2030402.306		
RW041	132+65.00 (1A)	50.00	LT	612423.944	2030409.756	0.00	IPINS	3/4" x 30" REBAR WITH A 2 INCH DIAMETER ALUMINUM CAP STAMPED "ODOT RW - PS 8438"	RW041	186651.974	618819.681	0.00	612374.019	2030244.236		
RW042	300+75.00 (2A)	55.00	LT	612465.959	2030428.928	0.00	IPINS	3/4" x 30" REBAR WITH A 2 INCH DIAMETER ALUMINUM CAP STAMPED "ODOT RW - PS 8438"	RW042	186664.779	618825.524	0.00	612416.031	2030263.407		
RW043	301+40.00 (2A)	63.00	LT	612530.637	2030418.641	0.00	IPINS	3/4" x 30" REBAR WITH A 2 INCH DIAMETER ALUMINUM CAP STAMPED "ODOT RW - PS 8438"	RW043	186684.492	618822.389	0.00	612480.703	2030253.121		
RW045	302+50.00 (2A)	63.00	LT	612640.568	2030414.763	0.00	IPINS	3/4" x 30" REBAR WITH A 2 INCH DIAMETER ALUMINUM CAP STAMPED "ODOT RW - PS 8438"	RW045	186717.996	618821.207	0.00	612590.625	2030249.243		
RW046	302+73.08 (2A)	54.04	LT	612663.950	2030422.904	0.00	IPINS	3/4" x 30" REBAR WITH A 2 INCH DIAMETER ALUMINUM CAP STAMPED "ODOT RW - PS 8438"	RW046	186725.122	618823.688	0.00	612614.005	2030257.383		
RW047	126+30.00 (1A)	0.00	RT	612207.433	2029810.530	0.00	PKS	MAG NAIL SET	RW047	186585.987	618637.051	0.00	612157.526	2029645.059		
RW048	136+08.20 (1A)	0.00	RT	612466.662	2030753.756	0.00	PKS	MAG NAIL SET	RW048	186664.994	618924.524	0.00	612416.734	2030588.208		
RW049	138+72.25 (1A)	0.00	RT	612536.882	2031008.298	0.00	PKS	MAG NAIL SET	RW049	186686.395	619002.102	0.00	612486.948	2030842.730		
RW050	139+65.57 (1A)	0.00	RT	612562.143	2031098.133	0.00	PKS	MAG NAIL SET	RW050	186694.094	619029.481	0.00	612512.207	2030932.557		
RW051	140+00.00 (1A)	0.00	RT	612571.525	2031131.257	0.00	PKS	MAG NAIL SET	RW051	186696.954	619039.577	0.00	612521.588	2030965.679		
RW052	293+90.00 (2A)	0.00	RT	611783.324	2030508.044	0.00	PKS	MAG NAIL SET	RW052	186456.729	618849.637	0.00	611733.451	2030342.516		
RW053	302+32.70 (2A)	0.00	RT	612625.505	2030478.334	0.00	PKS	MAG NAIL SET	RW053	186713.405	618840.582	0.00	612575.564	2030312.809		
RW054	303+30.00 (2A)	0.00	RT	612722.740	2030474.903	0.00	PKS	MAG NAIL SET	RW054	186743.040	618839.536	0.00	612672.791	2030309.378		
RW055	303+35.0															

Plat Sheet

Instrument # 2020-774118 Film # _____

Name of Plat: LOR-113-03.75 Centerline Plat

Owner: State of Ohio - Department of Transportation

Description: State of Ohio
Situated in Henrietta Township, County
of Lorain, State of Ohio: Original Henrietta
Township Lot 87 Twp 5N, Range 19W
Connecticut Western Reserve

Floor Plans: _____

Related/Margin: _____

Comments: _____

Vol. 108

Pg. 49, 50, 51, 52

Receiving Stamp

STONE ENVIRONMENTAL
ENGINEERING
AND SCIENCE INC
748 GREEN CREST DR
WESTERVILLE, OH 43081

Amount: \$ 345.60

Initials: SC