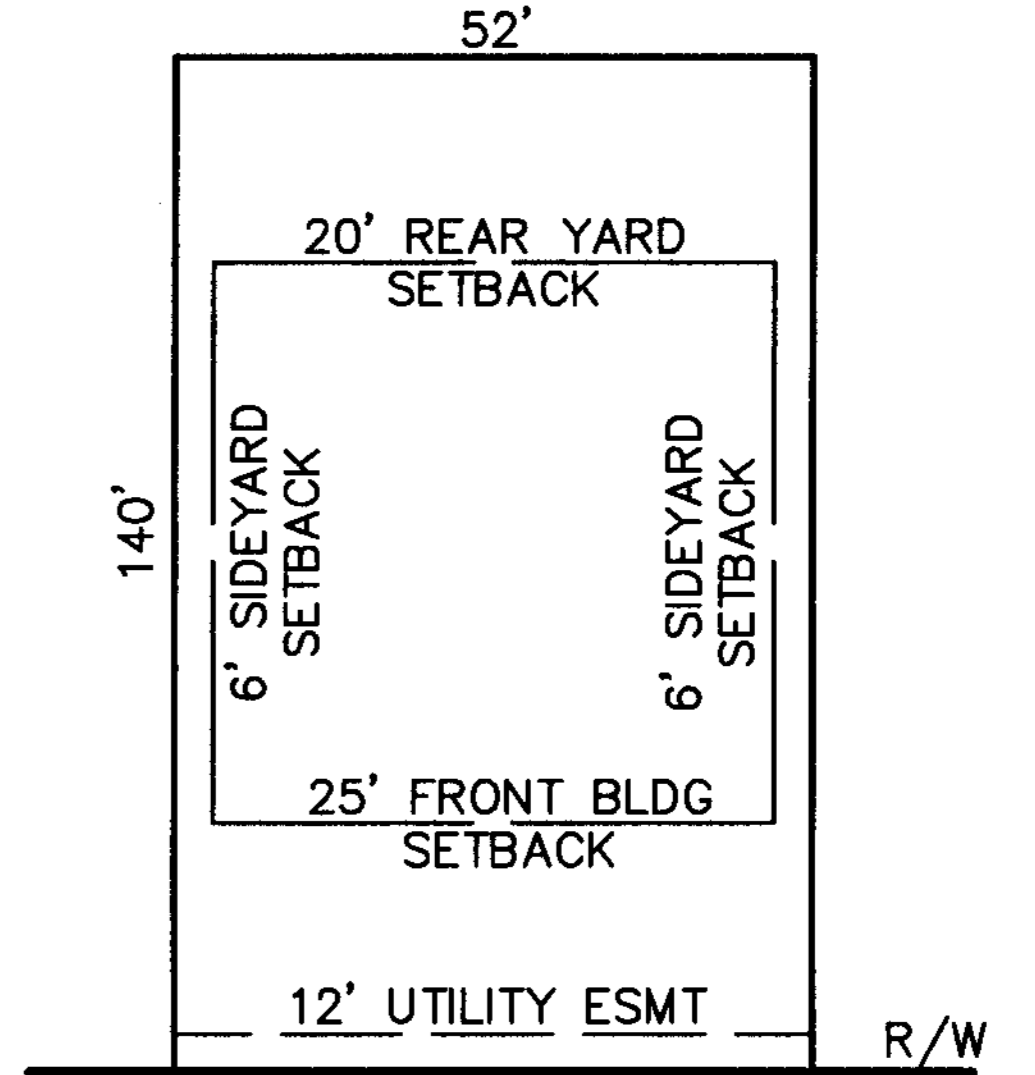
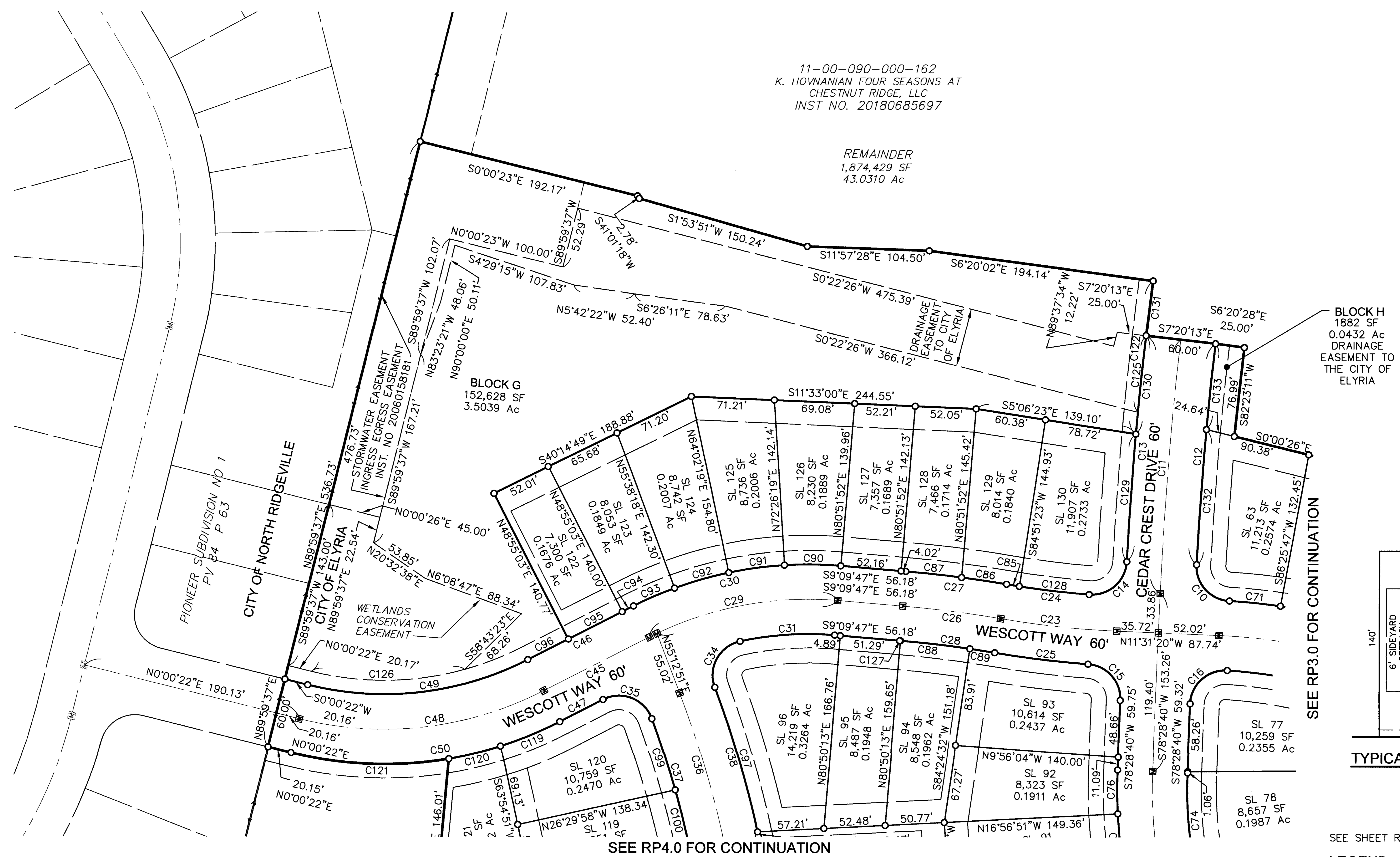
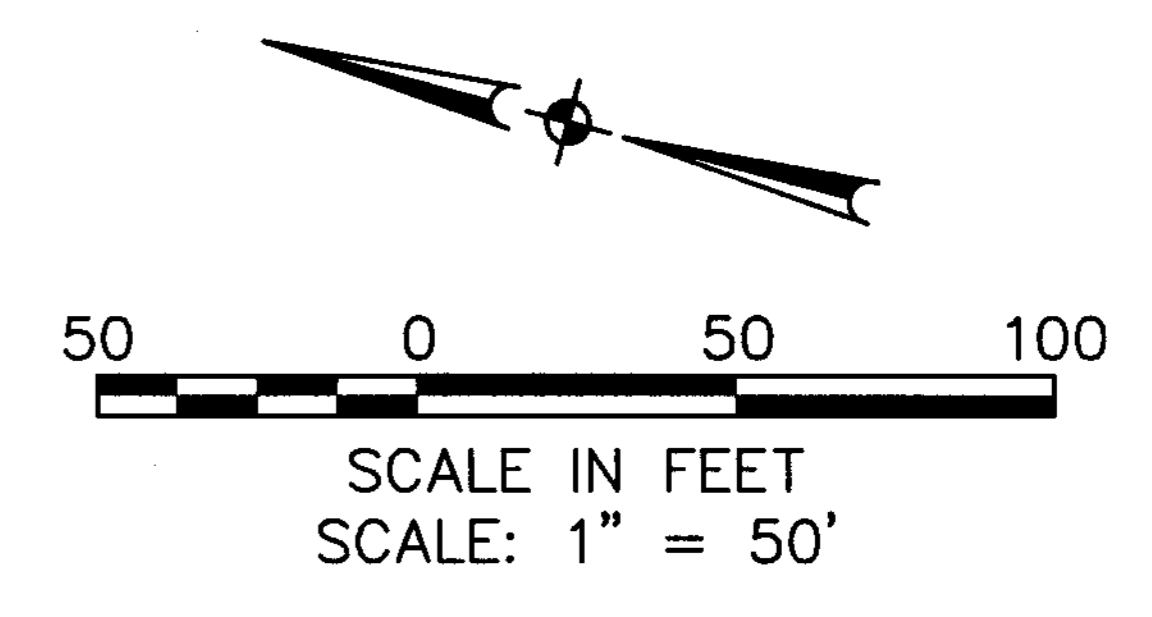


R:\18224\CIVIL_3D_2015\CURRENT DRAWINGS\SUBDIVISION\PLAN.dwg Last Plotted 8/27/2019 10:38:36 AM by Mark A. McNulty



- LEGEND
- ☐ MONUMENT BOX
 - ⊙ IRON PIPE/ IRON PIN FOUND AS NOTED
 - ☑ PROPOSED MONUMENT BOX
 - 5/8"x30" KS CAPPED PIN SET
LABELED "KS ASSOCS INC PROP MARKER"
 - R RECORD
 - S SURVEYED
 - FD FOUND



DATE: 12/03/2018	REVISIONS	DESCRIPTION	BY
DRAWN BY: CCC			
CHKD BY: MAM			
DWG. NAME: 18224			
PATH: F:\18224			
F.B.			
KS ASSOCIATES, Inc. 260 Burris Road, Suite 100 Elyria, OH 44035 P 440 365 4730 F 440 365 4790 www.ksassociates.com		RECORD PLAT FOUR SEASONS AT CHESTNUT RIDGE SUBDIVISION NO. 2 OF PART OF ORIGINAL EATON TOWNSHIP LOT NO. 90 CITY OF ELYRIA, COUNTY OF LORAIN, STATE OF OHIO	
SHEET RP5.0 OF 6		JOB NO. 18224	
DATE: 3/08/2019 ISSUED TO THE CITY			

CURVE TABLE						
CURVE #	LENGTH	RADIUS	DELTA	CHORD DIRECTION	CHORD LENGTH	TANGENT
C1	172.69'	57.00'	173°35'03"	N21°11'43"W	113.82'	1017.01'
C2	44.64'	30.00'	85°15'32"	S65°21'28"E	40.64'	27.61'
C3	46.25'	30.00'	88°19'31"	N21°26'03"E	41.80'	29.14'
C4	231.34'	387.00'	34°14'59"	S5°36'13"E	227.91'	119.24'
C5	213.40'	357.00'	34°14'59"	S5°36'13"E	210.24'	110.00'
C6	249.27'	417.00'	34°14'59"	S5°36'13"E	245.58'	128.48'
C7	182.99'	455.00'	23°02'37"	N0°00'02"W	181.76'	92.75'
C8	187.44'	485.00'	22°08'34"	N0°27'00"E	186.27'	94.90'
C9	162.34'	425.00'	21°53'09"	N0°34'42"E	161.36'	82.17'
C10	46.92'	30.00'	89°36'27"	S34°10'56"W	42.28'	29.80'
C11	219.14'	3000.00'	4°11'07"	S80°34'13"W	219.09'	109.62'
C12	190.60'	2970.00'	3°40'37"	S80°49'28"W	190.57'	95.33'
C13	195.05'	3030.00'	3°41'18"	S80°49'08"W	195.02'	97.56'
C14	47.84'	30.00'	91°22'28"	S55°20'17"E	42.93'	30.73'
C15	46.28'	30.00'	88°22'56"	N34°17'12"E	41.82'	29.16'
C16	47.73'	30.00'	91°09'27"	N55°56'36"W	42.85'	30.61'
C17	168.98'	370.00'	26°10'02"	N65°23'39"E	167.52'	85.99'
C18	182.68'	400.00'	26°10'02"	S65°23'39"W	181.10'	92.96'
C19	155.28'	340.00'	26°10'02"	S65°23'39"W	153.93'	79.02'
C20	171.29'	260.00'	37°44'49"	N71°11'03"E	168.21'	88.88'
C21	98.45'	230.00'	24°31'33"	N64°34'24"E	97.70'	49.99'
C22	124.14'	290.00'	24°31'33"	N64°34'24"E	123.19'	63.03'
C23	100.62'	800.00'	7°12'22"	N7°55'09"W	100.55'	50.37'
C24	71.69'	770.00'	5°20'05"	S6°59'01"E	71.67'	35.87'
C25	80.95'	830.00'	5°35'18"	S7°06'37"E	80.92'	40.51'
C26	84.60'	1000.00'	4°50'49"	N6°44'23"W	84.57'	42.32'
C27	87.13'	1030.00'	4°50'49"	N6°44'23"W	87.11'	43.59'
C28	82.06'	970.00'	4°50'49"	N6°44'23"W	82.03'	41.05'
C29	166.79'	300.00'	31°51'17"	N25°05'26"W	164.65'	85.61'
C30	183.47'	330.00'	31°51'17"	N25°05'26"W	181.12'	94.17'
C31	81.69'	270.00'	17°20'07"	N17°49'51"W	81.38'	41.16'
C32	159.58'	300.00'	30°28'36"	N24°24'05"W	157.70'	81.72'
C33	7.22'	300.00'	1°22'41"	N40°19'44"W	7.22'	3.61'
C34	51.26'	30.00'	97°54'02"	N75°26'55"W	45.25'	34.45'
C35	50.88'	30.00'	97°10'29"	N7°26'48"E	45.00'	34.01'
C36	135.22'	890.00'	8°42'18"	N59°34'00"E	135.09'	67.74'
C37	118.35'	860.00'	7°53'06"	N59°58'36"E	118.26'	59.27'
C38	133.57'	920.00'	8°19'06"	N59°45'36"E	133.45'	66.90'
C39	155.03'	600.00'	14°48'17"	S56°31'01"W	154.60'	77.95'
C40	162.79'	630.00'	14°48'17"	S56°31'01"W	162.33'	81.85'
C41	147.28'	570.00'	14°48'17"	S56°31'01"W	146.87'	74.05'
C42	231.18'	270.00'	49°03'26"	N24°35'10"E	224.18'	123.21'
C43	256.86'	300.00'	49°03'26"	S24°35'10"W	249.09'	136.90'
C44	205.49'	240.00'	49°03'26"	S24°35'10"W	199.27'	109.52'
C45	101.63'	27953.77'	0°12'30"	N41°07'19"W	101.63'	50.81'

CURVE TABLE						
CURVE #	LENGTH	RADIUS	DELTA	CHORD DIRECTION	CHORD LENGTH	TANGENT
C46	101.73'	27983.77'	0°12'30"	N41°07'19"W	101.73'	50.87'
C47	41.67'	27923.77'	0°05'08"	N41°11'00"W	41.67'	20.84'
C48	215.89'	300.00'	41°13'56"	N20°36'36"W	211.26'	112.86'
C49	194.30'	270.00'	41°13'56"	S20°36'36"E	190.14'	101.57'
C50	237.48'	330.00'	41°13'56"	S20°36'36"E	232.39'	124.15'
C51	35.31'	57.00'	35°29'41"	N47°50'58"E	34.75'	18.24'
C52	36.78'	57.00'	36°58'19"	N11°36'58"E	36.15'	19.06'
C53	36.78'	57.00'	36°58'19"	N25°21'22"W	36.15'	19.06'
C54	50.38'	57.00'	50°38'19"	N69°09'41"W	48.75'	26.97'
C55	13.44'	57.00'	13°30'25"	N78°45'58"E	13.41'	6.75'
C56	14.42'	30.00'	27°32'30"	N85°47'00"E	14.28'	7.35'
C57	30.22'	30.00'	57°43'02"	N51°35'13"W	28.96'	16.53'
C58	66.75'	357.00'	10°42'45"	N17°22'20"W	66.65'	33.47'
C59	69.66'	357.00'	11°10'50"	N6°25'33"W	69.55'	34.94'
C60	59.32'	357.00'	9°31'15"	N3°55'29"E	59.25'	29.73'
C61	17.67'	357.00'	2°50'10"	N10°06'12"E	17.67'	8.84'
C62	37.90'	417.00'	5°12'28"	S20°07'29"E	37.89'	18.96'
C63	50.45'	417.00'	6°55'53"	S14°03'19"E	50.42'	25.25'
C64	50.51'	417.00'	6°56'25"	S7°07'10"E	50.48'	25.29'
C65	50.49'	417.00'	6°56'12"	S0°10'52"E	50.45'	25.27'
C66	25.07'	417.00'	3°26'43"	N5°00'36"E	25.07'	12.54'
C67	34.85'	417.00'	4°47'19"	S9°07'37"W	34.84'	17.44'
C68	40.68'	485.00'	4°48'19"	N9°07'07"E	40.66'	20.35'
C69	52.10'	485.00'	6°09'17"	N3°38'19"E	52.07'	26.07'
C70	50.55'	485.00'	5°58'16"	N2°25'27"W	50.52'	25.30'
C71	44.12'	485.00'	5°12'42"	N8°00'56"W	44.10'	22.07'
C72	98.84'	425.00'	13°19'28"	S3°42'09"E	98.61'	49.64'
C73	63.51'	425.00'	8°33'41"	S7°14'26"W	63.45'	31.81'
C74	77.34'	340.00'	13°02'00"	N71°57'40"E	77.17'	38.84'
C75	77.94'	340.00'	13°08'02"	N58°52'39"E	77.77'	39.14'
C76	37.88'	400.00'	5°25'31"	S75°45'54"W	37.86'	18.95'
C77	49.85'	400.00'	7°08'27"	S69°28'55"W	49.82'	24.96'
C78	48.09'	400.00'	6°53'18"	S62°28'02"W	48.06'	24.07'
C79	46.86'	400.00'	6°42'45"	S55°40'01"W	46.83'	23.46'
C80	30.67'	290.00'	6°03'32"	N55°20'24"E	30.65'	15.35'
C81	47.93'	290.00'	9°28'09"	N63°06'15"E	47.87'	24.02'
C82	45.54'	290.00'	8°59'52"	N72°20'15"E	45.49'	22.82'
C83	28.13'	230.00'	7°00'27"	S55°48'51"W	28.11'	14.08'
C84	70.32'	230.00'	17°31'06"	N68°04'38"E	70.05'	35.44'
C85	11.12'	770.00'	0°49'39"	N4°43'48"W	11.12'	5.56'
C86	39.14'	1030.00'	2°10'38"	N5°24'17"W	39.14'	19.57'
C87	47.99'	1030.00'	2°40'11"	N7°49'42"W	47.99'	24.00'
C88	59.76'	970.00'	3°31'48"	S7°21'22"E	59.75'	29.89'
C89	21.58'	970.00'	1°16'30"	N4°57'13"W	21.58'	10.79'
C90	48.37'	330.00'	8°23'54"	N13°21'44"W	48.33'	24.23'

CURVE TABLE						
CURVE #	LENGTH	RADIUS	DELTA	CHORD DIRECTION	CHORD LENGTH	TANGENT
C91	48.38'	330.00'	8°24'01"	N21°45'41"W	48.34'	24.23'
C92	48.38'	330.00'	8°24'01"	N30°09'42"W	48.34'	24.23'
C93	38.34'	330.00'	6°39'22"	N37°41'23"W	38.32'	19.19'
C94	10.77'	27983.77'	0°01'19"	N41°01'44"W	10.77'	5.38'
C95	52.00'	27983.77'	0°06'23"	N41°05'35"W	52.00'	26.00'
C96	38.97'	28075.35'	0°04'46"	N41°11'10"W	38.97'	19.48'
C97	129.69'	920.00'	8°04'37"	N59°38'22"E	129.58'	64.95'
C98	3.88'	920.00'	0°14'29"	N63°47'55"E	3.88'	1.94'
C99	64.36'	860.00'	4°17'17"	S58°10'42"W	64.35'	32.20'
C100	52.02'	860.00'	3°27'58"	S62°03'19"W	52.02'	26.02'
C101	1.97'	860.00'	0°07'51"	S63°51'14"W	1.97'	0.98'
C102	4.61'	630.00'	0°25'08"	S63°42'36"W	4.61'	2.30'
C103	50.03'	630.00'	4°33'00"	S61°13'32"W	50.02'	25.03'
C104	54.08'	630.00'	4°55'05"	S56°29'30"W	54.06'	27.05'
C105	20.00'	630.00'	1°49'09"	N53°07'23"E	20.00'	10.00'
C106	34.07'	630.00'	3°05'56"	S50°39'50"W	34.07'	17.04'
C107	48.80'	570.00'	4°54'19"	N61°28'00"E	48.78'	24.41'
C108	68.94'	570.00'	6°55'46"	N55°32'58"E	68.89'	34.51'
C109	29.55'	570.00'	2°58'12"	N50°35'59"E	29.54'	14.78'
C110	19.11'	300.00'	3°39'01"	S47°17'22"W	19.11'	9.56'
C111	51.85'	300.00'	9°54'09"	S40°30'47"W	51.78'	25.99'
C112	51.85'	300.00'	9°54'09"	S30°36'38"W	51.78'	25.99'
C113	51.85'	300.00'	9°54'09"	S20°42'29"W	51.78'	25.99'
C114	51.85'	300.00'	9°54'09"	S10°48'20"W	51.78'	25.99'
C115	30.35'	300.00'	5°47'49"	S2°57'21"W	30.34'	15.19'
C116	18.70'	240.00'	4°27'49"	N2°17'22"E	18.69'	9.35'
C117	117.74'	240.00'	28°06'34"	N18°34'33"E	116.57'	60.08'
C118	69.05'	240.00'	16°29'03"	N40°52'21"E	68.81'	34.76'
C119	55.12'	330.00'	9°34'14"	S36°26'27"E	55.06'	27.63'
C120	45.97'	330.00'	7°58'50"	S27°39'55"E	45.93'	23.02'
C121	136.39'	330.00'	23°40'52"	S11°50'04"E	135.43'	69.18'
C122	132.15'	3030.00'	2°29'56"	S82°18'09"W	132.14'	66.09'
C123	111.29'	260.00'	24°31'33"	N64°34'24"E	110.45'	56.51'
C124	60.00'	260.00'	13°13'16"	N83°26'49"E	59.86'	30.13'
C125	66.28'	3030.00'	1°15'12"	S82°02'11"W	66.27'	33.14'
C126	133.51'	258.00'	29°38'59"	S14°49'07"E	132.03'	68.29'
C127	0.71'	970.00'	0°02'31"	N9°08'32"W	0.71'	0.36'
C128	60.57'	770.00'	4°30'26"	S7°23'50"E	60.56'	30.30'
C129	109.91'	3030.00'	2°04'42"	S80°00'50"W	109.91'	54.96'
C130	85.14'	3030.00'	1°36'36"	S81°51'29"W	85.14'	42.57'
C131	47.02'	3030.00'	0°53'21"	S83°06'27"W	47.01'	23.51'
C132	116.31'	2970.00'	2°14'38"	S80°06'29"W	116.31'	58.16'
C133	74.29'	2970.00'	1°25'59"	S81°56'47"W	74.28'	37.14'

DATE: 12/03/2018	DRAWN BY: CCC	CHK BY: MAM	DWG. NAME: 18224	PLOT: 18224	F.B.	DESCRIPTION
						DATE
 <p>KS Associates, Inc. 260 Burns Road, Suite 100 Elyria, OH 44035 P 440 365 4730 F 440 365 4790 www.kssassociates.com</p>						REVISIONS
<p>CURVE TABLES FOUR SEASONS AT CHESTNUT RIDGE SUBDIVISION NO. 2</p> <p>OF PART OF ORIGINAL EATON TOWNSHIP LOT NO. 90 CITY OF ELYRIA, COUNTY OF LORAIN, STATE OF OHIO</p>						ISSUED TO THE CITY 3/08/2019
SHEET RP6.0						OF 6
JOB NO. 18224						TAB

Plat Sheet

Instrument # 2019-0738430

Film # _____

Name of Plat: Four Seasons at Chestnut Ridge Subdivision No. 2

Owner: K. Hovhannian Four Seasons at Chestnut Ridge LLC

Description: Situated in the State of Ohio,
County of Lorain, City of Elyria being part of
Original Eaton Township 90 26.0364 Acres
Creating Sublots 43 through 130 Blocks G and
H Easements Also

Floor Plans: _____

Related/Margin: _____

Comments: _____

Vol. 107

Receiving Stamp

Pg. 25, 26, 27, 28
29, 30

MILLENNIUM TITLE AGENCY
24500 CENTER RIDGE ROAD
SUITE 395
WESTLAKE, OH 44145

Amount: \$ 518.40

Initials: TM