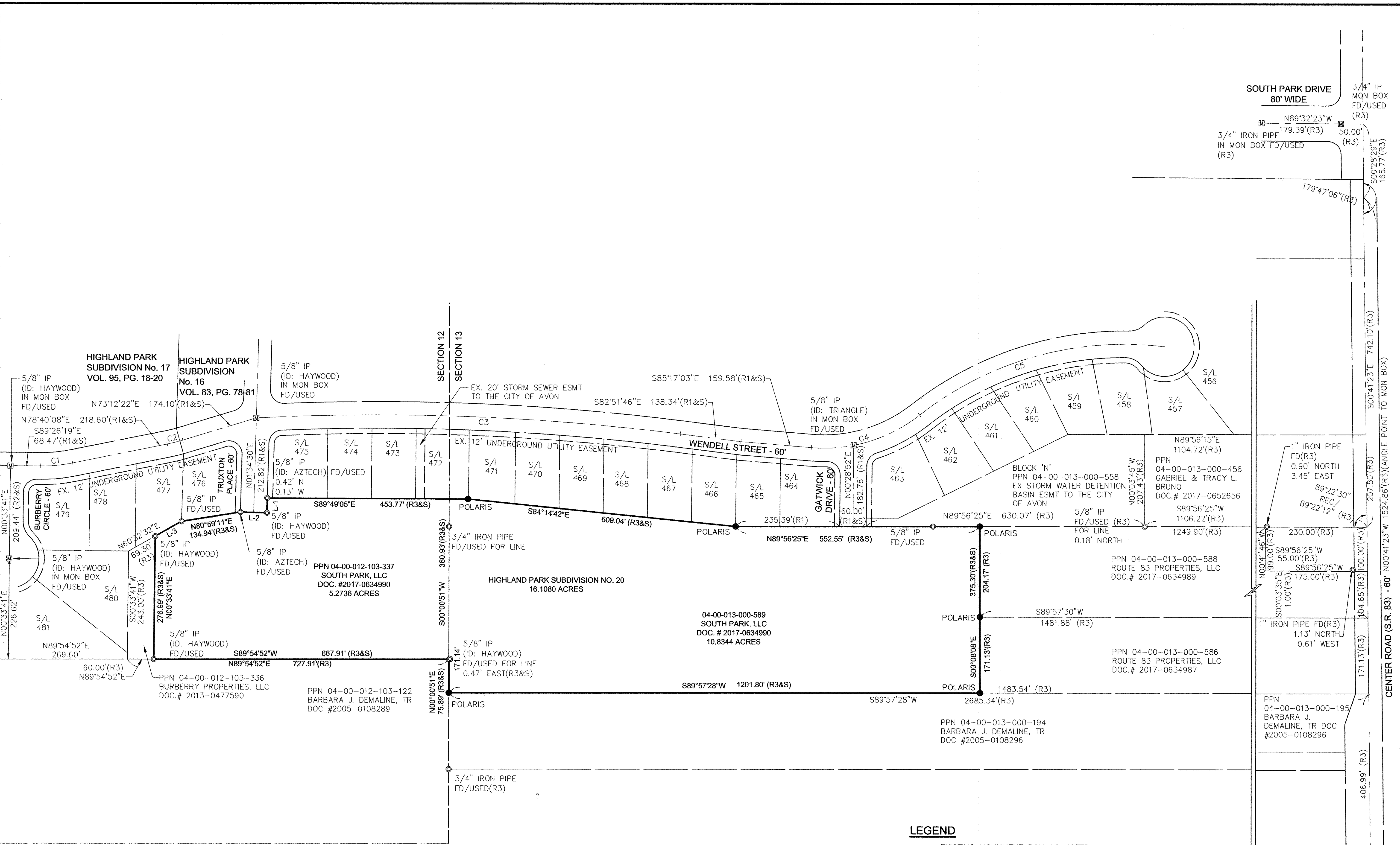


R:\1600016256-1\CIVIL 3D 2014 171208 Revisions\CURRENT DRAWINGS\SHEETS\RP2.0 PARCEL PLAN.dwg Last Plotted 8/10/2018 11:18:46 AM by Mark A. McNulty

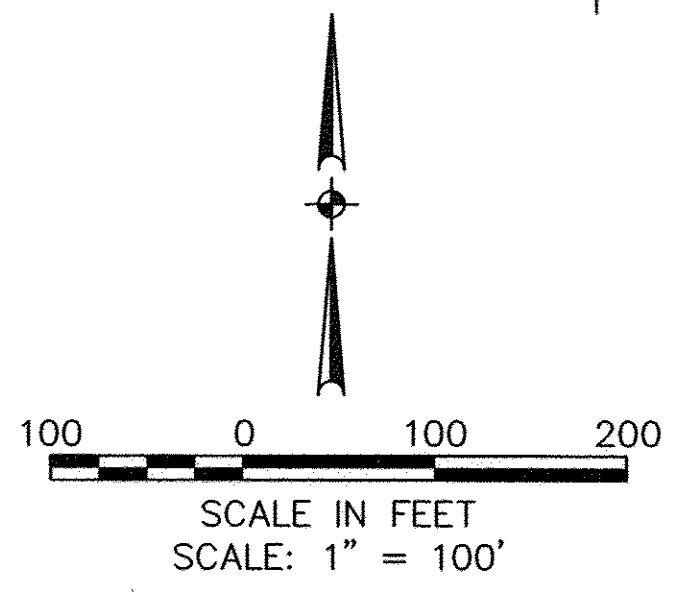


- REFERENCES**
- R1 HIGHLAND PARK SUBDIVISION NO. 16 P.V. 83 P. 78
 - R2 HIGHLAND PARK SUBDIVISION NO. 17 P.V. 95 P. 18
 - R3 BOUNDARY SURVEY PERFORMED BY MICHAEL P. SPELLACY, P.S. ON BEHALF OF POLARIS ENGINEERING AND SURVEYING, INC. DATED 01/04/2017

CURVE TABLE						
CURVE	LENGTH	RADIUS	DELTA	TANGENT	CHORD	BEARING
C1	72.65'(R2&S)	350.00'	11°53'33"	36.45'	72.52'	N84°36'55"E
C2	36.23'(R1,R2&S)	380.00'	05°27'46"	18.13'	36.22'	N75°56'15"E
C3	961.30'(R1&S)	5453.44'	10°05'59"	481.90'	960.06'	N87°54'46"W
C4	261.98'(R1&S)	350.00'	42°52'56"	137.45'	255.88'	N73°16'29"E
C5	590.22'(R1&S)	750.00'	45°05'23"	311.35'	575.11'	S74°22'13"W

LINE TABLE		
LINE	LENGTH	BEARING
L1	33.09'(R3&S)	N01°34'30"E
L2	60.00'(R3&S)	S88°25'30"E
L3	68.48'(R3&S)	N60°32'32"E

- LEGEND**
- ☒ EXISTING MONUMENT BOX AS NOTED
 - ⊙ IRON PIPE/ IRON PIN FOUND AS NOTED
 - 5/8" IRON PIN FOUND (ID: POLARIS)
 - R RECORD
 - S SURVEYED
 - FD FOUND
 - P PAGE
 - PV PLAT VOLUME
 - V VOLUME



DATE: 4/03/2017	DATE:	REVISIONS	DESCRIPTION
DRAWN BY: JCC	DRAWN BY:		
CHKD BY: TAB	CHKD BY:		
DWG. NAME: RECORD PLAT	DWG. NAME:		
PATH: 16256-1\CIVIL 3D	PATH:		
F.B.:	F.B.:		

KS ASSOCIATES
www.ksassociates.com

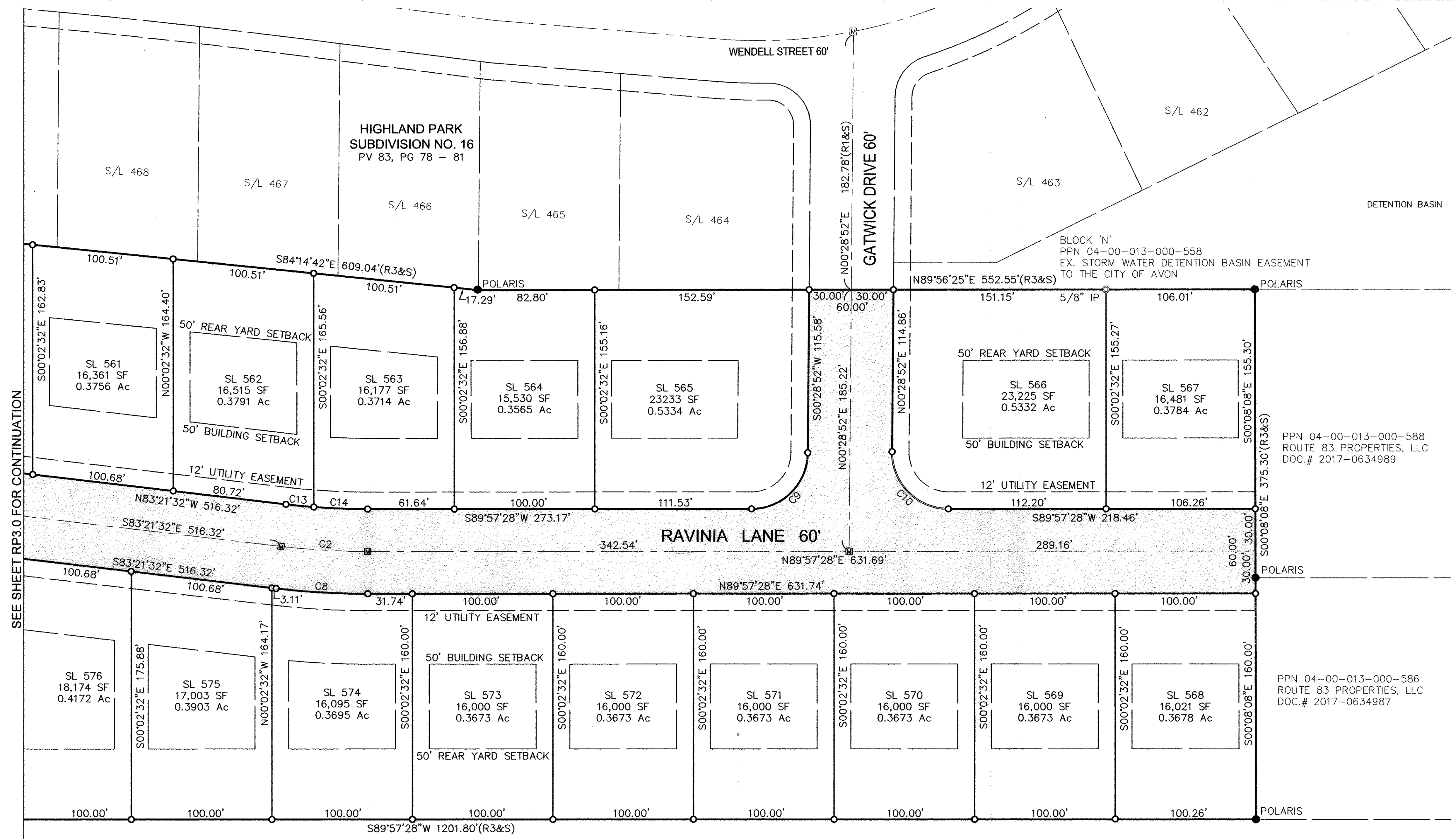
KS Associates, Inc.
260 Burns Road, Suite 100
Elyria, OH 44035
P 440 365 4730
F 440 365 4790
www.ksassociates.com

RECORD PLAT
HIGHLAND PARK
SUBDIVISION NO. 20

BEING PART OF
ORIGINAL AVON TOWNSHIP SECTION NOS. 12 & 13
CITY OF AVON, COUNTY OF LORAIN, STATE OF OHIO

SHEET RP2.0	OF 4
JOB NO. 16256-1	

R:\1600016258-1\CIVIL 3D 2014 171206 Revisions\CURRENT DRAWINGS\SHEET\RP4.DWG -RP4-D-SUBDIVISION PLAN.dwg Last Plotted 9/10/2016 10:55:51 AM by Mark A. McHally



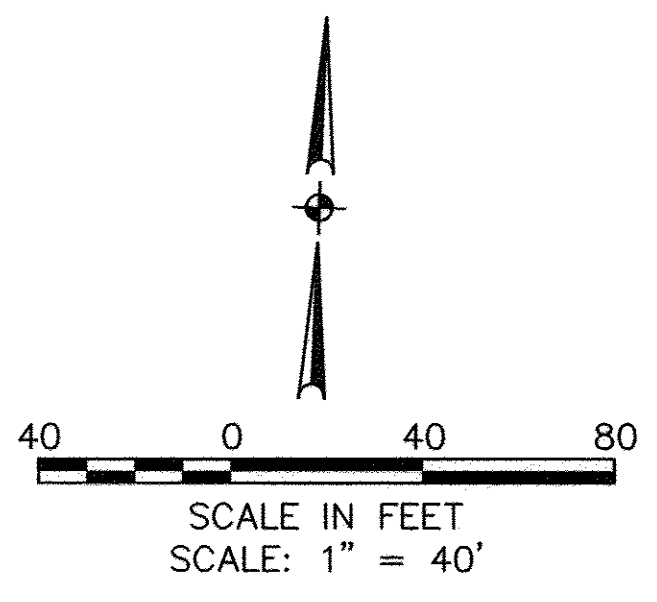
SEE SHEET RP3.0 FOR CONTINUATION

LEGEND

- ☒ EXISTING MONUMENT BOX AS NOTED
- ⊙ IRON PIPE/ IRON PIN FOUND AS NOTED
- ☒ PROPOSED MONUMENT BOX WITH 5/8"x30" KS CAPPED PIN SET LABELED "KS ASSOCS INC PROP MARKER"
- 5/8"x30" KS CAPPED PIN SET LABELED "KS ASSOCS INC PROP MARKER"
- POLARIS ● 5/8" IRON PIN FOUND (ID: POLARIS)
- R RECORD
- S SURVEYED
- FD FOUND
- P PAGE
- PV PLAT VOLUME
- V VOLUME

PPN 04-00-013-000-194
BARBARA J. DEMALINE, TR.
DOC.# 2005-0108296

CURVE TABLE						
CURVE #	LENGTH	RADIUS	DELTA	TANGENT	CHORD BEARING	CHORD
C1	62.22'	530.00'	06°43'36"	31.15'	S86°43'20"E	62.19'
C2	61.82'	530.00'	06°41'00"	30.95'	S86°42'02"E	61.79'
C3	61.67'	40.00'	88°20'22"	38.86'	N45°44'41"E	55.74'
C4	63.99'	40.00'	91°39'38"	41.18'	N44°15'19"W	57.38'
C5	65.74'	560.00'	06°43'36"	32.91'	N86°43'20"W	65.71'
C6	58.70'	500.00'	06°43'36"	29.38'	S86°43'20"E	58.67'
C7	58.32'	500.00'	06°41'00"	29.19'	N86°42'02"W	58.29'
C8	65.32'	560.00'	06°41'00"	32.70'	S86°42'02"E	65.28'
C9	62.47'	40.00'	89°28'36"	39.64'	S45°13'10"W	56.31'
C10	63.20'	40.00'	90°31'24"	40.37'	N44°46'50"W	56.83'
C11	11.41'	560.00'	01°10'01"	5.70'	N89°30'08"W	11.41'
C12	26.72'	500.00'	03°03'44"	13.36'	S88°33'16"E	26.72'
C13	19.92'	500.00'	02°16'59"	9.96'	N84°30'02"W	19.92'
C14	38.40'	500.00'	04°24'01"	19.21'	N87°50'32"W	38.39'
C15	31.98'	500.00'	03°39'52"	15.99'	S85°11'28"E	31.97'
C16	54.34'	560.00'	05°33'35"	27.19'	N86°08'20"W	54.32'



DATE	4/28/2017	DESCRIPTION	
DRAWN BY	CC	REVISIONS	
CHKD BY	JAB	DATE	
DWG. NAME	RECORD PLAT	DATE	
PATH	16258-1\CIVIL_3D	DATE	
F.B.		DATE	

KS ASSOCIATES, Inc.
260 Burns Road, Suite 100
Elyria, OH 44035
P 440 365 4730
F 440 365 4790
www.ksassociates.com

RECORD PLAT
HIGHLAND PARK
SUBDIVISION NO. 20

BEING PART OF
ORIGINAL AVON TOWNSHIP SECTION NOS. 12 & 13
CITY OF AVON, COUNTY OF LORAIN, STATE OF OHIO

SHEET RP4.0	OF 4
JOB NO. 16258-1	