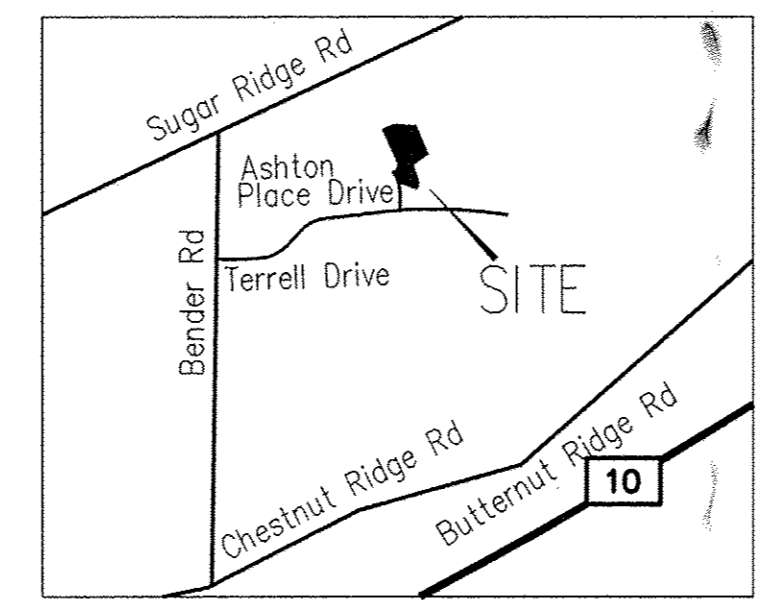
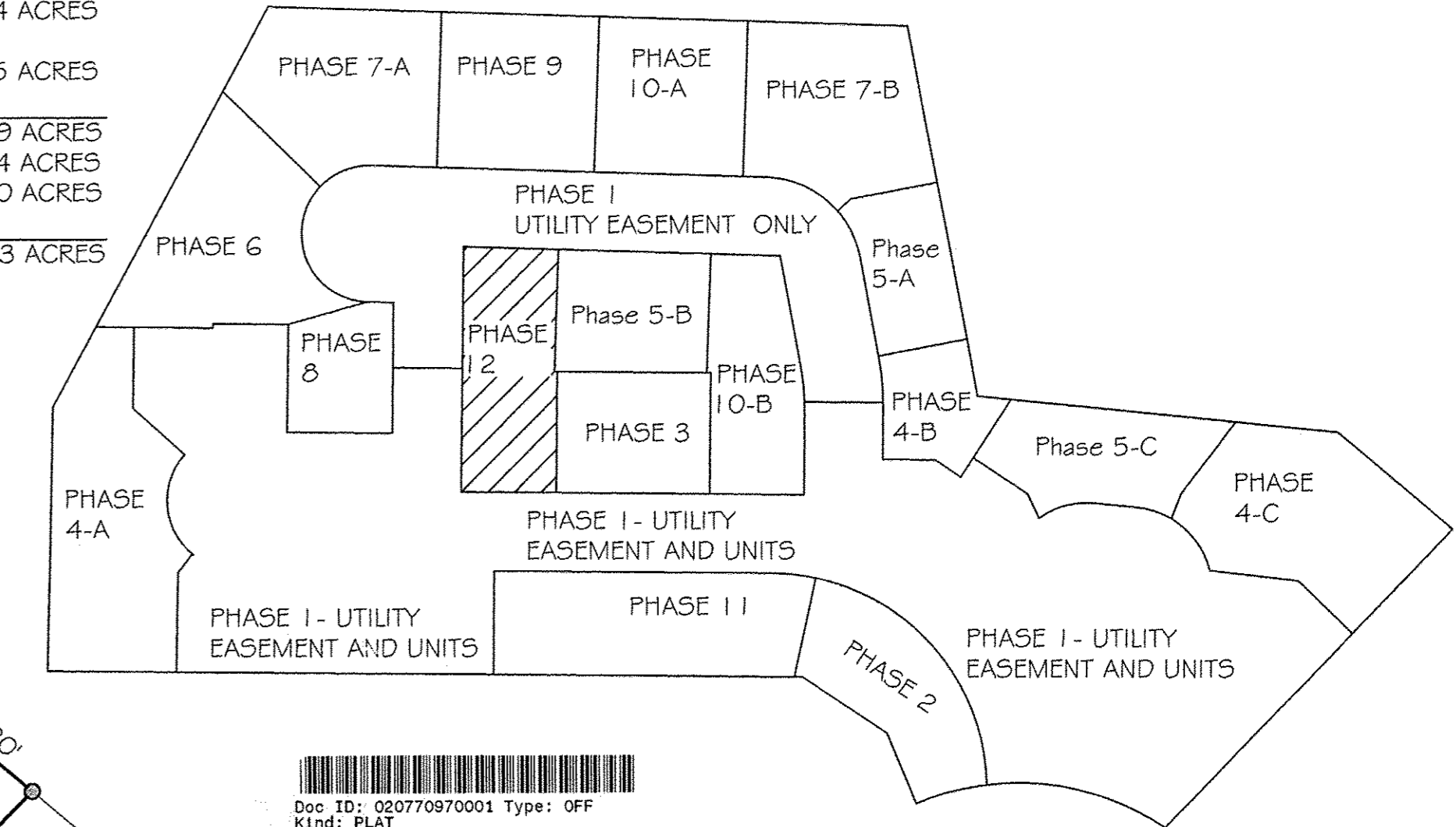


ELEVENTH AMENDMENT TO DECLARATION OF RE-ESTABLISHED CONDOMINIUM
 THE VILLAGE AT ASHTON PLACE CONDOMINIUM RE-FILE
 BEING A VACATION OF VILLAGE AT ASHTON PLACE CONDOMINIUM
 AMENDMENT 1 VOLUME 88 PAGES 40-48
 AMENDMENT 2 VOLUME 89 PAGES 11-17
 AMENDMENT 3 VOLUME 90 PAGES 02-05
 AND AMENDMENT 4 VOLUME 90 PAGES 34-37 LORAIN COUNTY PLAT RECORDS
 IN ORIGINAL RIDGEVILLE TOWNSHIP LOT NUMBER 38,
 NOW IN THE CITY OF NORTH RIDGEVILLE - LORAIN COUNTY - STATE OF OHIO
 NOVEMBER 12, 2018
 SCALE: 1 INCH = 50 FEET



ACREAGE BREAKDOWN:

ACREAGE OF UNITS	0.1574 ACRES
ACREAGE OF COMMON ELEMENTS OUTSIDE OF BUILDINGS (NOT INCLUDING COMMON ELEMENTS UNDER BUILDINGS)	0.1615 ACRES
LAND DECLARED PHASE 12	0.3189 ACRES
PHASES 1-11	9.4844 ACRES
EXPANDABLE PROPERTY	0.0000 ACRES
TOTAL	9.8033 ACRES



Doc ID: 020770970001 Type: OFF
 Kind: PLAT
 Recorded: 01/02/2019 at 09:15:26 AM
 Fee Amt: \$172.80 Page 1 of 1
 Lorain County, Ohio
 Judith M. Medlock County Recorder
 File # 2019-0699825

FIDELITY NATIONAL TITLE
 COMPANY, LLC
 5340 MEADOW LANE
 SHEFFIELD VILLAGE, OH 44054
 Plat vol. 106
 Pgs. 10,11

TRANSFERRED
 IN COMPLIANCE WITH SEC. 319-202
 OHIO REV. CODE
 JAN - 2 2019
 I. CRAIG SHODGRASS, CPA, CGFM
 LORAIN COUNTY AUDITOR

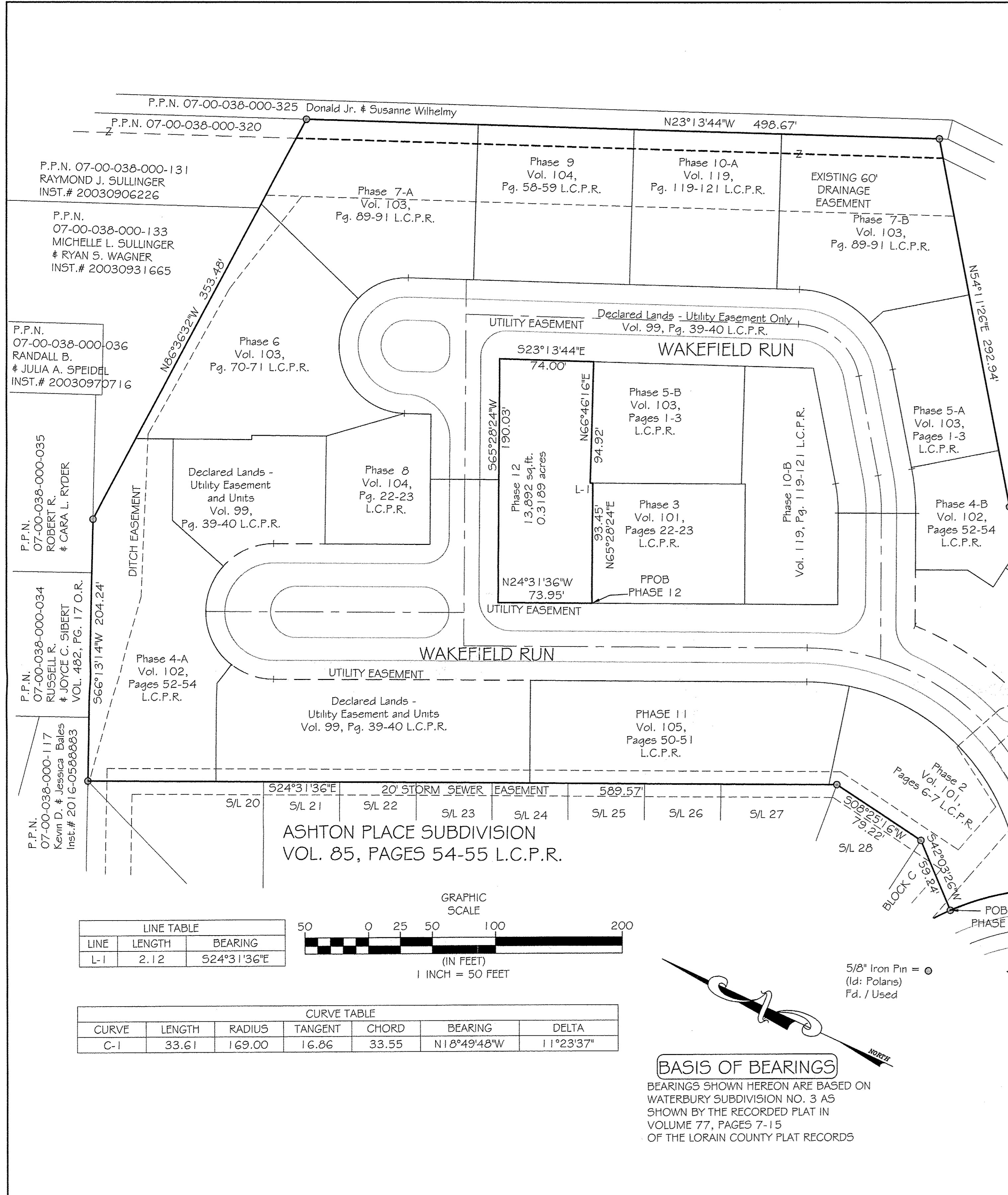
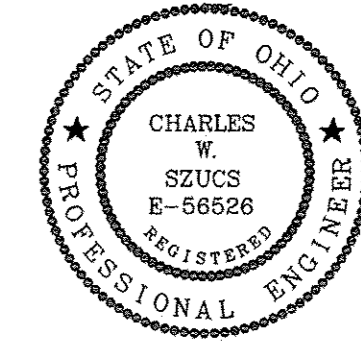
I HEREBY CERTIFY TO THE FOLLOWING: THAT THE LOCATIONS OF
 THE BUILDING FOUNDATIONS AND DIMENSIONS, AND THEIR
 FINISHED FLOOR ELEVATIONS ARE ACCURATELY SHOWN FROM A
 FIELD SURVEY MADE UNDER MY DIRECT SUPERVISION, AND WERE
 ACTUALLY CONSTRUCTED.

Michael P. Spellacy
 MICHAEL P. SPELLACY P.S. #3169
 12/19/2018
 11/12/2018
 DATE

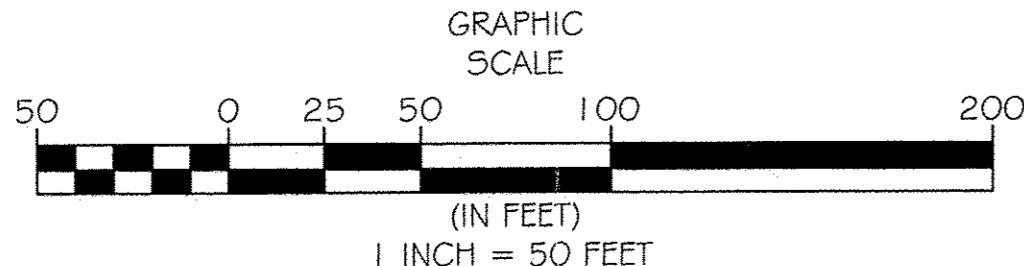


I HEREBY CERTIFY THAT THESE DRAWINGS ACCURATELY SHOW
 EACH BUILDING AS BUILT OR CONSTRUCTED.

Charles W. Szucs
 CHARLES W. SZUCS, P.E. #56526
 12-19-18
 11/12/2018
 DATE



LINE	LENGTH	BEARING
L-1	2.12	S24°31'36"E



CURVE	LENGTH	RADIUS	TANGENT	CHORD	BEARING	DELTA
C-1	33.61	169.00	16.86	33.55	N18°49'48"W	11°23'37"

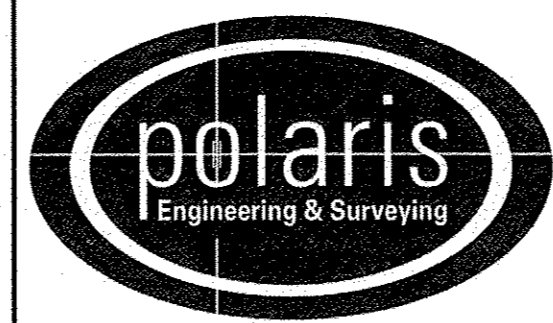
BASIS OF BEARINGS

BEARINGS SHOWN HEREON ARE BASED ON
 WATERBURY SUBDIVISION NO. 3 AS
 SHOWN BY THE RECORDED PLAT IN
 VOLUME 77, PAGES 7-15
 OF THE LORAIN COUNTY PLAT RECORDS

REV. No.	DATE	BY	CHK'D

DATE: 11/12/2018
 SCALE: HOR. 1"=50'
 VERT. 1"=0'
 FOLDER: Surveys/Plats
 FILENAME: Replat-11
 TAB: Phase 12-01
 DRAWN: MPS

VILLAGE AT ASHTON PLACE
 CONDOMINIUM RE-FILE
 PHASE 12
 PART OF ORIGINAL RIDGEVILLE TOWNSHIP LOT 38
 CITY OF NORTH RIDGEVILLE - LORAIN COUNTY - OHIO

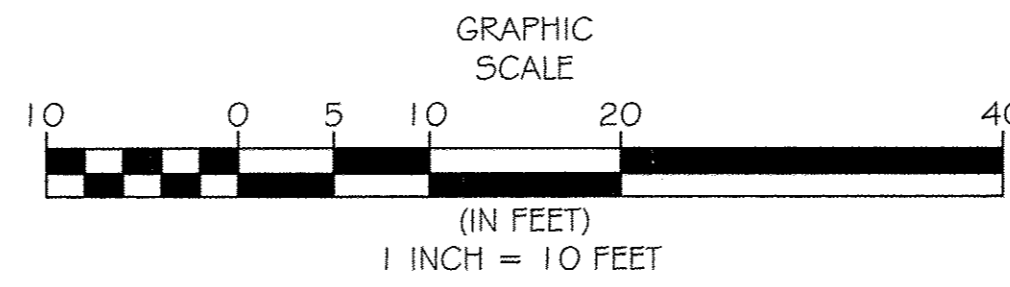
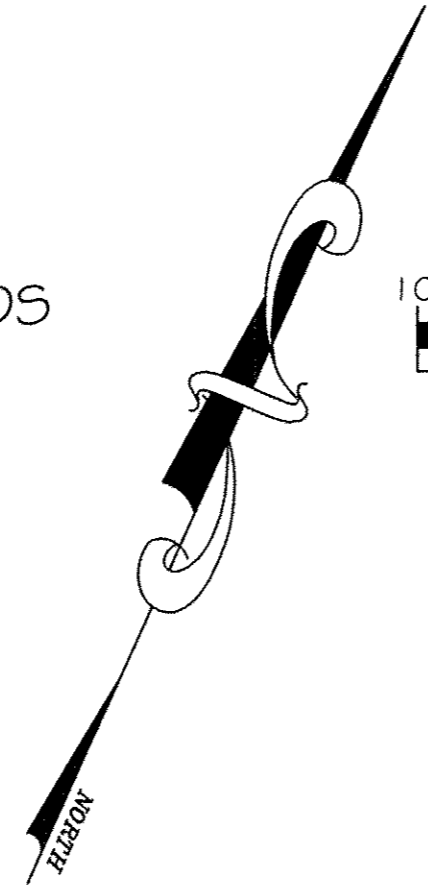


POLARIS ENGINEERING & SURVEYING, INC.
 34600 CHARDON ROAD - SUITE D
 WILLOUGHBY HILLS, OHIO
 44094 (440) 944-4433 (440) 944-3722 (Fax)
 www.polaris-es.com

PHASE 12
 VILLAGE AT ASHTON PLACE
 CONDOMINIUM
 AS RE-ESTABLISHED

CONTRACT No.	
14262	
SHEET	OF
01	02

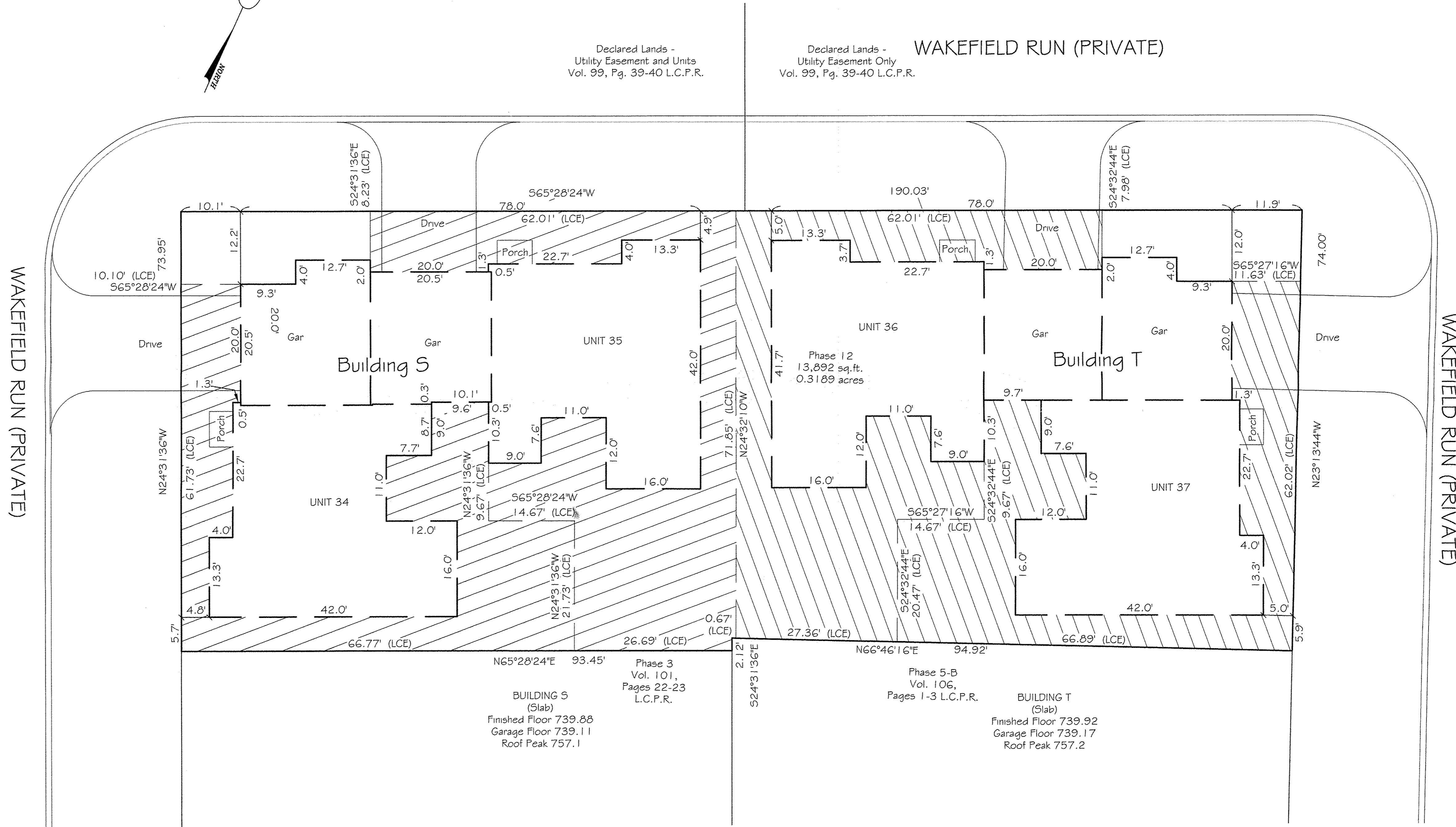
ELEVENTH AMENDMENT TO DECLARATION OF RE-ESTABLISHED CONDOMINIUM
 THE VILLAGE AT ASHTON PLACE CONDOMINIUM RE-FILE
 BEING A VACATION OF VILLAGE AT ASHTON PLACE CONDOMINIUM
 AMENDMENT 1 VOLUME 88 PAGES 40-48
 AMENDMENT 2 VOLUME 89 PAGES 11-17
 AMENDMENT 3 VOLUME 90 PAGES 02-05
 AND AMENDMENT 4 VOLUME 90 PAGES 34-37 LORAIN COUNTY PLAT RECORDS
 AND RE-ESTABLISHMENT OF CONDOMINIUM
 IN ORIGINAL RIDGEVILLE TOWNSHIP LOT NUMBER 38,
 NOW IN THE CITY OF NORTH RIDGEVILLE - LORAIN COUNTY - STATE OF OHIO
 NOVEMBER 12, 2018
 SCALE: 1 INCH = 10 FEET



= LIMITED COMMON ELEMENTS

Declared Lands -
 Utility Easement and Units
 Vol. 99, Pg. 39-40 L.C.P.R.

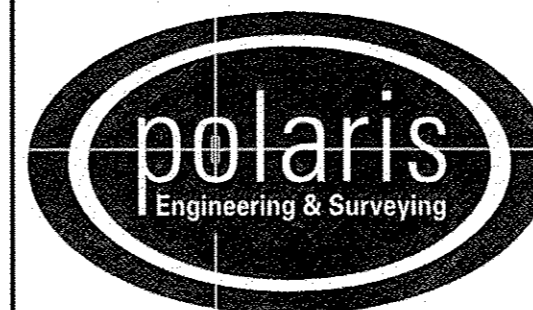
Declared Lands -
 Utility Easement Only
 Vol. 99, Pg. 39-40 L.C.P.R.



REV. No.	DATE	BY	CHK'D

DATE: 11/12/2018
 SCALE: HOR. 1"=10'
 VERT. 1"=0'
 FOLDER: Surveys/Plats
 FILENAME: Replat-11
 TAB: Phase 12-01
 DRAWN: MPS

VILLAGE AT ASHTON PLACE
 CONDOMINIUM RE-FILE
 PHASE 12
 PART OF ORIGINAL RIDGEVILLE TOWNSHIP LOT 38
 CITY OF NORTH RIDGEVILLE - LORAIN COUNTY - OHIO



POLARIS ENGINEERING & SURVEYING, INC.
 34600 CHARDON ROAD - SUITE D
 WILLOUGHBY HILLS, OHIO
 44094 (440) 944-4433 (440) 944-3722 (Fax)
 www.polaris-es.com

PHASE 12
 VILLAGE AT ASHTON PLACE
 CONDOMINIUM
 AS RE-ESTABLISHED

CONTRACT No.	
14262	
SHEET	OF
02	02