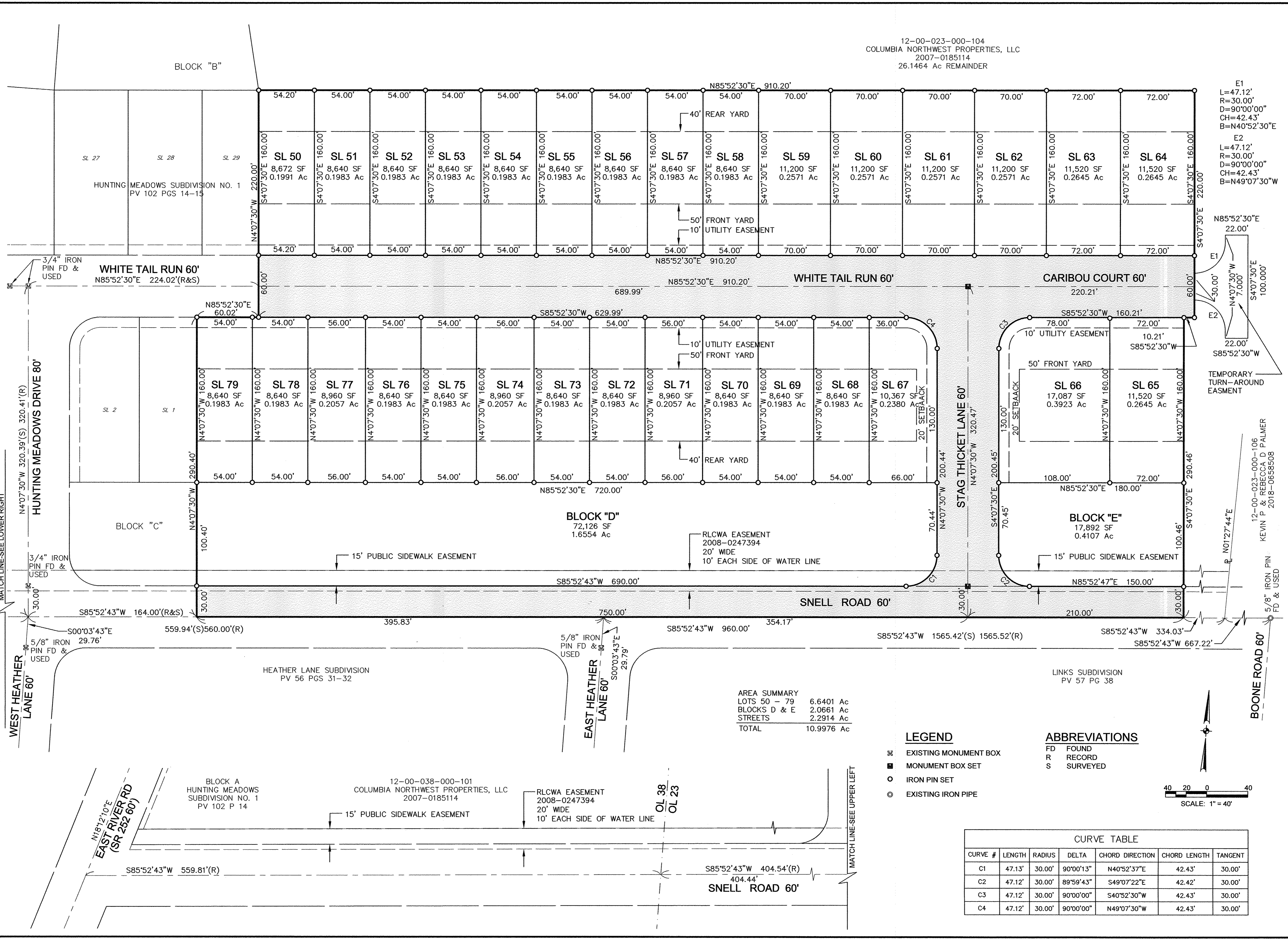


12-00-023-000-104
COLUMBIA NORTHWEST PROPERTIES, LLC
2007-0185114
26.1464 Ac REMAINDER



E1
L=47.12'
R=30.00'
D=90°00'00"
CH=42.43'
B=N40°52'30"E

E2
L=47.12'
R=30.00'
D=90°00'00"
CH=42.43'
B=N49°07'30"W

N85°52'30"E
22.00'
E1
30.00'
N4°07'30"W
7.000'
E2
22.00'
S4°07'30"E
100.000'

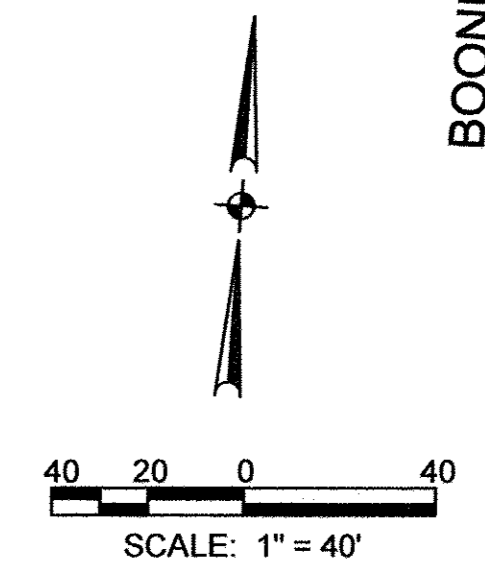
TEMPORARY
TURN-AROUND
EASMENT

AREA SUMMARY

LOTS 50 - 79	6.6401 Ac
BLOCKS D & E	2.0661 Ac
STREETS	2.2914 Ac
TOTAL	10.9976 Ac

- LEGEND**
- ☒ EXISTING MONUMENT BOX
 - MONUMENT BOX SET
 - IRON PIN SET
 - ⊙ EXISTING IRON PIPE

- ABBREVIATIONS**
- FD FOUND
 - R RECORD
 - S SURVEYED



CURVE TABLE

CURVE #	LENGTH	RADIUS	DELTA	CHORD DIRECTION	CHORD LENGTH	TANGENT
C1	47.13'	30.00'	90°00'13"	N40°52'37"E	42.43'	30.00'
C2	47.12'	30.00'	89°59'43"	S49°07'22"E	42.42'	30.00'
C3	47.12'	30.00'	90°00'00"	S40°52'30"W	42.43'	30.00'
C4	47.12'	30.00'	90°00'00"	N49°07'30"W	42.43'	30.00'

	DATE	DRAWN BY	CHKD BY	DWS. NAME	DATE	DESCRIPTION	BY
	05/23/2017	OCG	TAB	17024/014_30/CURRENT DWGS/			
				PAW			
				F.B.			
REVISIONS							
<p>KS Associates, Inc. 260 Burns Road, Suite 100 Elyria, OH 44035 P 440 365 4730 F 440 365 4790 www.ksassociates.com</p>							
<p>RECORD PLAT HUNTING MEADOWS SUBDIVISION NO. 3</p>							
<p>TOWNSHIP OF COLUMBIA, PART OF ORIGINAL LOT NO. 23 COUNTY OF LORAIN, STATE OF OHIO</p>							
<p>SHEET RP2.0 OF 2 JOB NO. 17024</p>							