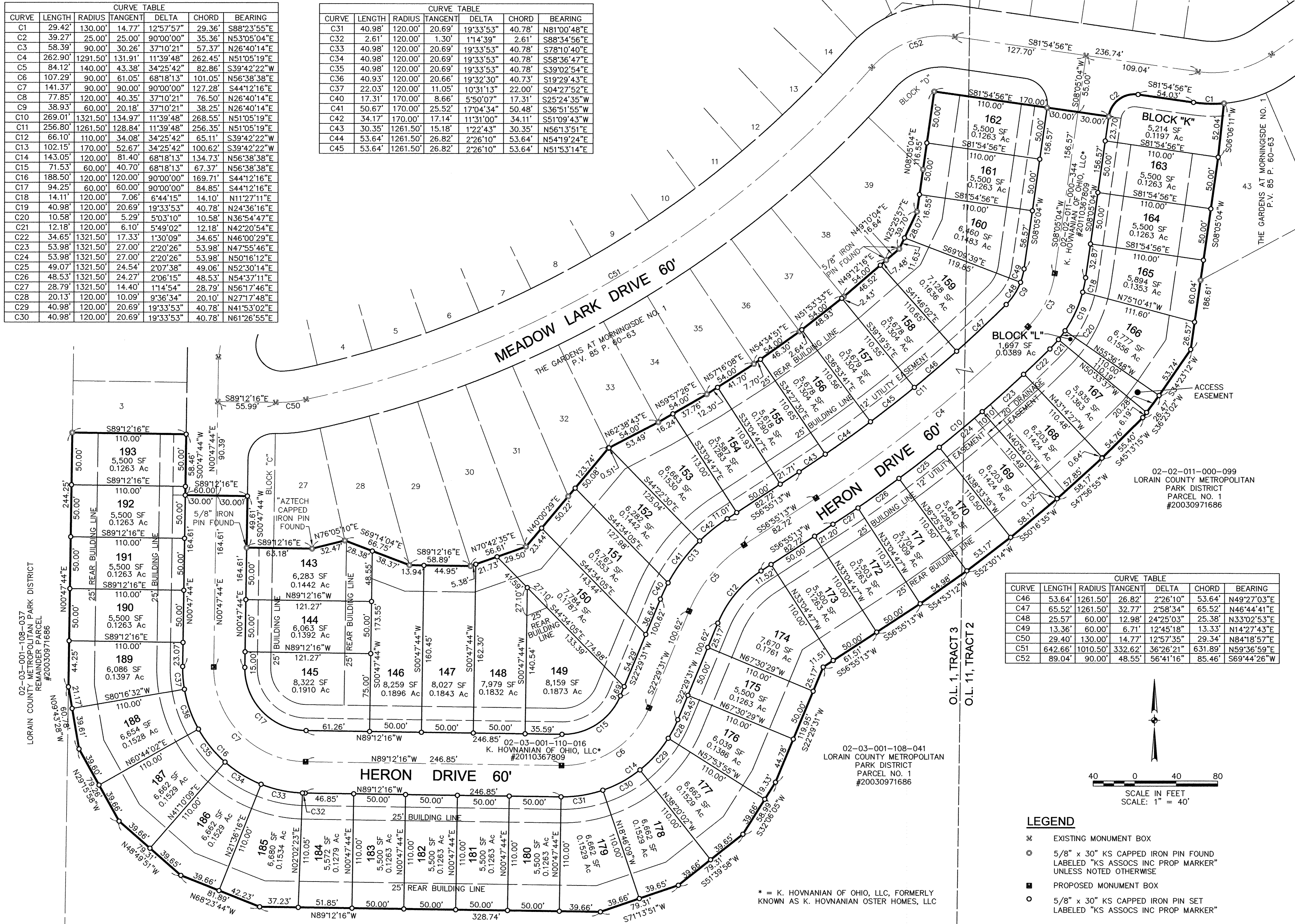


CURVE TABLE						
CURVE	LENGTH	RADIUS	TANGENT	DELTA	CHORD	BEARING
C1	29.42'	130.00'	14.77'	12°57'57"	29.36'	S88°23'55"E
C2	39.27'	25.00'	25.00'	90°00'00"	35.36'	N53°05'04"E
C3	58.39'	90.00'	30.26'	37°10'21"	57.37'	N26°40'14"E
C4	262.90'	1291.50'	131.91'	11°39'48"	262.45'	N51°05'19"E
C5	84.12'	140.00'	43.38'	34°25'42"	82.86'	S39°42'22"W
C6	107.29'	90.00'	61.05'	68°18'13"	101.05'	N56°38'38"E
C7	141.37'	90.00'	90.00'	90°00'00"	127.28'	S44°12'16"E
C8	77.85'	120.00'	40.35'	37°10'21"	76.50'	N26°40'14"E
C9	38.93'	60.00'	20.18'	37°10'21"	38.25'	N26°40'14"E
C10	269.01'	1321.50'	134.97'	11°39'48"	268.55'	N51°05'19"E
C11	256.80'	1261.50'	128.84'	11°39'48"	256.35'	N51°05'19"E
C12	66.10'	110.00'	34.08'	34°25'42"	65.11'	S39°42'22"W
C13	102.15'	170.00'	52.67'	34°25'42"	100.62'	S39°42'22"W
C14	143.05'	120.00'	81.40'	68°18'13"	134.73'	N56°38'38"E
C15	71.53'	60.00'	40.70'	68°18'13"	67.37'	N56°38'38"E
C16	188.50'	120.00'	120.00'	90°00'00"	169.71'	S44°12'16"E
C17	94.25'	60.00'	60.00'	90°00'00"	84.85'	S44°12'16"E
C18	14.11'	120.00'	7.06'	6°44'15"	14.10'	N11°27'11"E
C19	40.98'	120.00'	20.69'	19°33'53"	40.78'	N24°36'16"E
C20	10.58'	120.00'	5.29'	5°03'10"	10.58'	N36°54'47"E
C21	12.18'	120.00'	6.10'	5°49'02"	12.18'	N42°20'54"E
C22	34.65'	1321.50'	17.33'	1°30'09"	34.65'	N46°00'29"E
C23	53.98'	1321.50'	27.00'	2°20'26"	53.98'	N47°55'46"E
C24	53.98'	1321.50'	27.00'	2°20'26"	53.98'	N50°16'12"E
C25	49.07'	1321.50'	24.54'	2°07'38"	49.06'	N52°30'14"E
C26	48.53'	1321.50'	24.27'	2°06'15"	48.53'	N54°37'11"E
C27	28.79'	1321.50'	14.40'	1°14'54"	28.79'	N56°17'46"E
C28	20.13'	120.00'	10.09'	9°36'34"	20.10'	N27°17'48"E
C29	40.98'	120.00'	20.69'	19°33'53"	40.78'	N41°53'02"E
C30	40.98'	120.00'	20.69'	19°33'53"	40.78'	N61°26'55"E

CURVE TABLE						
CURVE	LENGTH	RADIUS	TANGENT	DELTA	CHORD	BEARING
C31	40.98'	120.00'	20.69'	19°33'53"	40.78'	N81°00'48"E
C32	2.61'	120.00'	1.30'	1°14'39"	2.61'	S88°34'56"E
C33	40.98'	120.00'	20.69'	19°33'53"	40.78'	S78°10'40"E
C34	40.98'	120.00'	20.69'	19°33'53"	40.78'	S58°36'47"E
C35	40.98'	120.00'	20.69'	19°33'53"	40.78'	S39°02'54"E
C36	40.93'	120.00'	20.66'	19°32'30"	40.73'	S19°29'43"E
C37	22.03'	120.00'	11.05'	10°31'13"	22.00'	S04°27'52"E
C40	17.31'	170.00'	8.66'	5°50'07"	17.31'	S25°24'35"W
C41	50.67'	170.00'	25.52'	17°04'34"	50.48'	S36°51'55"W
C42	34.17'	170.00'	17.14'	11°31'00"	34.11'	S51°09'43"W
C43	30.35'	1261.50'	15.18'	1°22'43"	30.35'	N56°13'51"E
C44	53.64'	1261.50'	26.82'	2°26'10"	53.64'	N54°19'24"E
C45	53.64'	1261.50'	26.82'	2°26'10"	53.64'	N51°53'14"E

CURVE TABLE						
CURVE	LENGTH	RADIUS	TANGENT	DELTA	CHORD	BEARING
C46	53.64'	1261.50'	26.82'	2°26'10"	53.64'	N49°27'03"E
C47	65.52'	1261.50'	32.77'	2°58'34"	65.52'	N46°44'41"E
C48	25.57'	60.00'	12.98'	24°25'03"	25.58'	N33°02'53"E
C49	13.36'	60.00'	6.71'	12°45'18"	13.33'	N14°27'43"E
C50	29.40'	130.00'	14.77'	12°57'35"	29.34'	N84°18'57"E
C51	642.66'	1010.50'	332.62'	36°26'21"	631.89'	N59°36'59"E
C52	89.04'	90.00'	48.55'	56°41'16"	85.46'	S69°44'26"W



DATE:	9/25/2017
DRAWN BY:	CCC
CHKD BY:	TAS
DWG. NO.:	17050.RP01
PATH:	16027/CIVIL 3D
F.B.:	

REVISIONS	DATE	DESCRIPTION

KS Associates, Inc.
 260 Burns Road, Suite 100
 Elyria, OH 44035
 P 440 365 4730
 F 440 365 4790
 www.ksassociates.com

KS ASSOCIATES

RECORD PLAT
 THE GARDENS AT MORNINGSIDE
 SUBDIVISION NO. 4

SHEET 2 OF 2

JOB NO. 17050

R: 17000.17050.CIVIL 3D 2014\CURRENT DRAWINGS\SHEETS\PLAT\17050-GARDENS AT MORNINGSIDE 4 - RP02.DWG 4/18/2018 10:25 AM

02-03-001-108-037
 LORAIN COUNTY METROPOLITAN PARK DISTRICT
 REMAINDER PARCEL
 #20030971686

MEADOW LARK DRIVE 60'

HERON DRIVE 60'

HERON DRIVE 60'

02-03-001-108-041
 LORAIN COUNTY METROPOLITAN
 PARK DISTRICT
 PARCEL NO. 1
 #20030971686

02-02-011-000-099
 LORAIN COUNTY METROPOLITAN
 PARK DISTRICT
 PARCEL NO. 1
 #20030971686

* = K. HOVNANIAN OF OHIO, LLC, FORMERLY
 KNOWN AS K. HOVNANIAN OSTER HOMES, LLC