

Record Plat
French Creek Business Park
Subdivision No. 2
 CITY OF SHEFFIELD LAKE - LORAIN COUNTY - OHIO

POLARIS ENGINEERING & SURVEYING, INC.
 34600 CHARBON ROAD, SUITE D
 WILLOUGHBY HILLS, OHIO 44094
 (440) 944-4433 (FAX) (440) 944-3722 (FAX)
 www.polaris-es.com



Plat Sheet

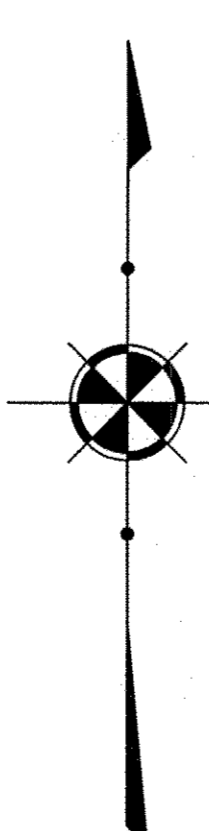
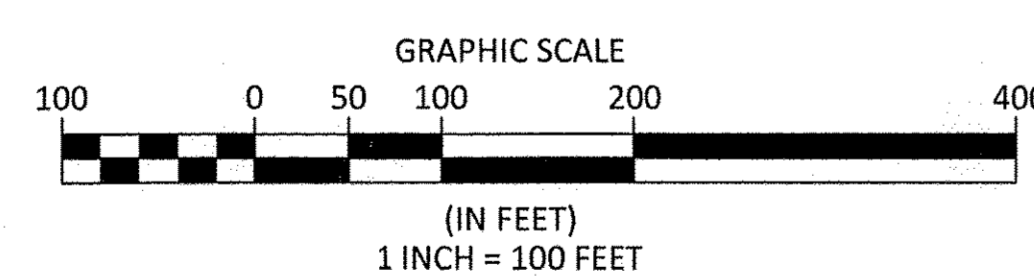
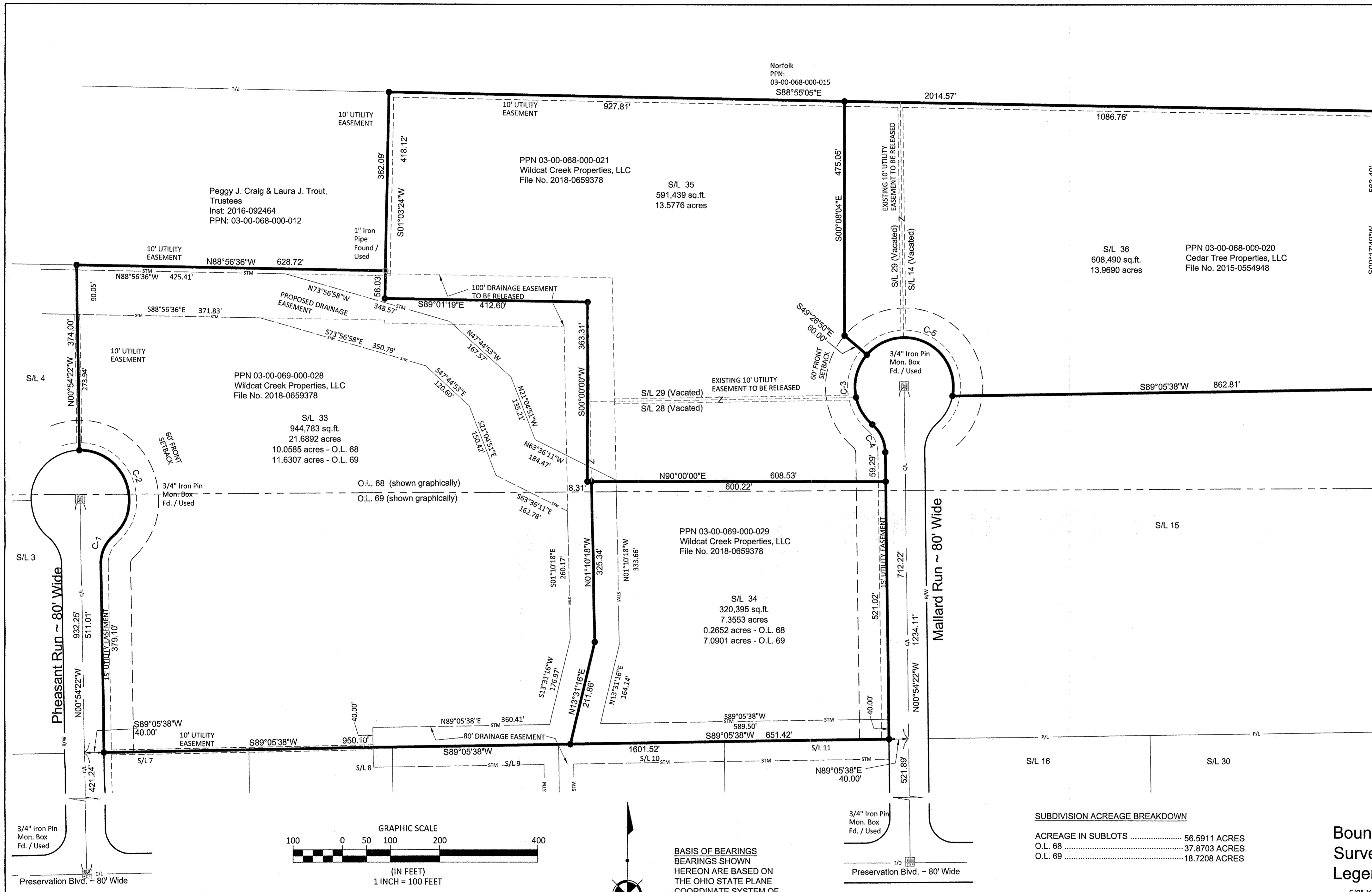
CONTRACT No.

17101

SHEET OF

02 02

This Deed approved by Sheffield Village as not being in violation of Chapter 711 of the Ohio Revised Code.



BASIS OF BEARINGS
 BEARINGS SHOWN
 HEREON ARE BASED ON
 THE OHIO STATE PLANE
 COORDINATE SYSTEM OF
 1983 - NORTH ZONE,
 1986 ADJUSTMENT

SUBDIVISION ACREAGE BREAKDOWN

ACREAGE IN SUBLOTS	56.5911 ACRES
O.L. 68	37.8703 ACRES
O.L. 69	18.7208 ACRES

CURVE TABLE

CURVE	LENGTH	RADIUS	TANGENT	CHORD	BEARING	DELTA
C-1	64.03	75.00	34.11	62.11	S23°33'10"W	48°55'04"
C-2	242.46	100.00	266.88	187.28	N21°26'50"W	138°55'04"
C-3	157.74	100.00	100.66	141.89	S04°38'08"E	90°22'36"
C-4	64.03	75.00	34.11	62.11	N25°21'54"W	48°55'04"
C-5	262.06	100.00	375.17	193.25	N64°22'20"W	150°08'59"

REV. No.	DATE	BY	

DATE: 06/07/2018
 SCALE: HOR. 1" = 100'
 VERT. N/A
 FOLDER: DWG/Survey
 FILENAME: ALTA
 TAB: 01-ALTA
 DRAWN: MPS

