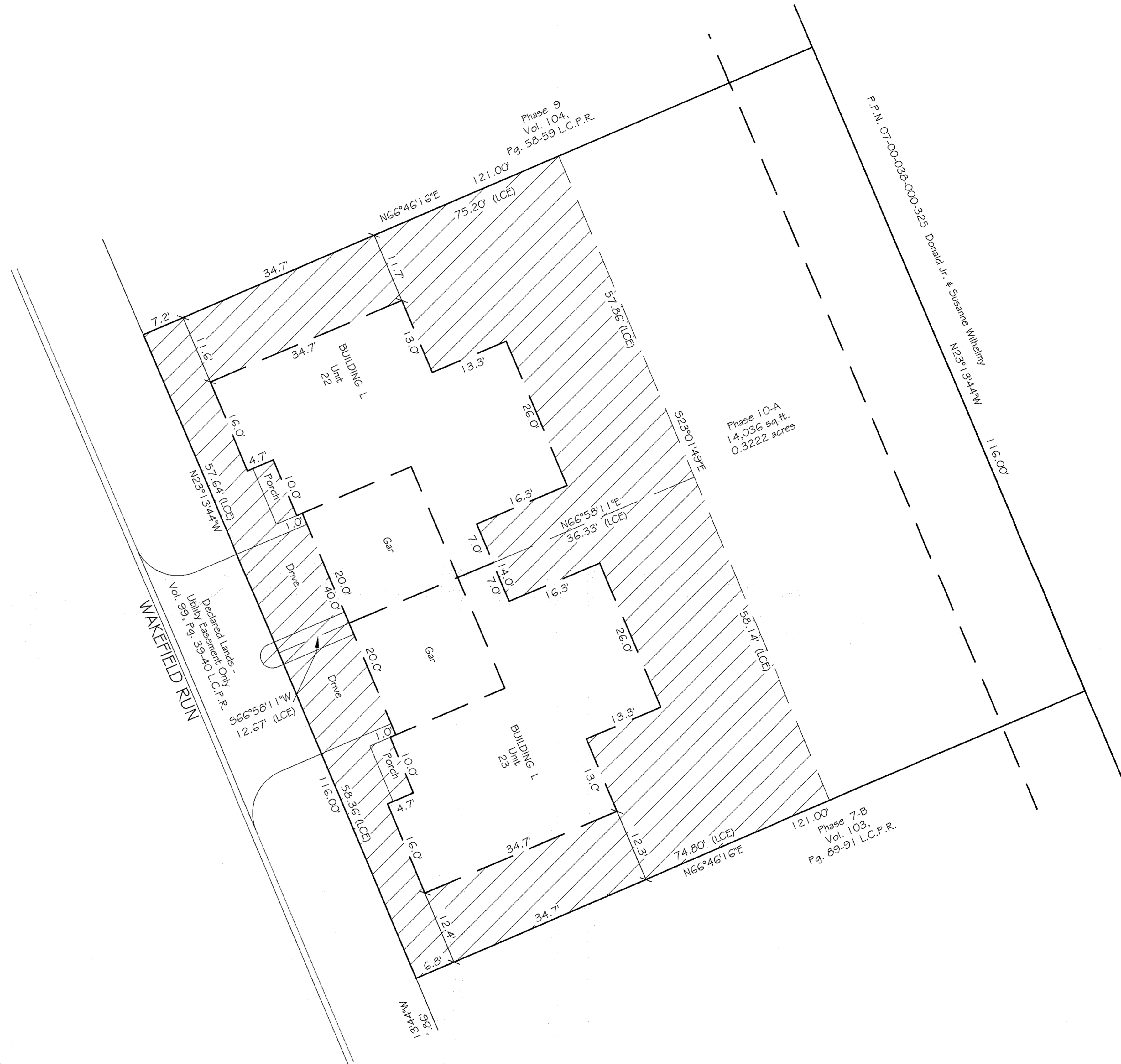
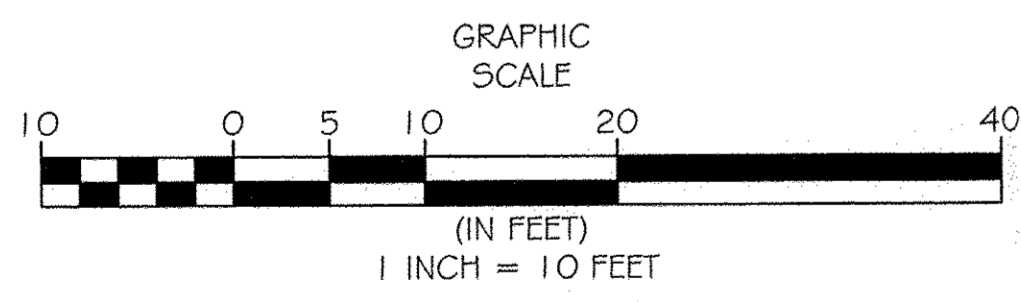




NINTH AMENDMENT TO DECLARATION OF RE-ESTABLISHED CONDOMINIUM  
 THE VILLAGE AT ASHTON PLACE CONDOMINIUM RE-FILE  
 BEING A VACATION OF VILLAGE AT ASHTON PLACE CONDOMINIUM  
 AMENDMENT 1 VOLUME 88 PAGES 40-48  
 AMENDMENT 2 VOLUME 89 PAGES 11-17  
 AMENDMENT 3 VOLUME 90 PAGES 02-05  
 AND AMENDMENT 4 VOLUME 90 PAGES 34-37 LORAIN COUNTY PLAT RECORDS  
 AND RE-ESTABLISHMENT OF CONDOMINIUM  
 IN ORIGINAL RIDGEVILLE TOWNSHIP LOT NUMBER 38,  
 NOW IN THE CITY OF NORTH RIDGEVILLE - LORAIN COUNTY - STATE OF OHIO  
 MAY, 2018  
 SCALE: 1 INCH = 10 FEET



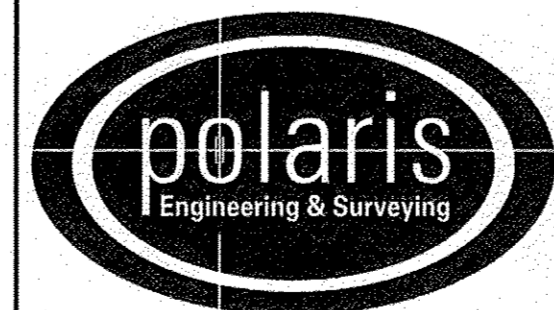
= LIMITED COMMON ELEMENTS



REV. No.	DATE	BY	CHKD

DATE: 05/05/2018  
 SCALE: HOR. 1"=10'  
 VERT. 1"=0'  
 FOLDER: Surveys/Plats  
 FILENAME: Replat-09  
 TAB: Phase 10-02  
 DRAWN: MPS

VILLAGE AT ASHTON PLACE  
 CONDOMINIUM RE-FILE  
 PHASE 10  
 PART OF ORIGINAL RIDGEVILLE TOWNSHIP LOT 38  
 CITY OF NORTH RIDGEVILLE - LORAIN COUNTY - OHIO

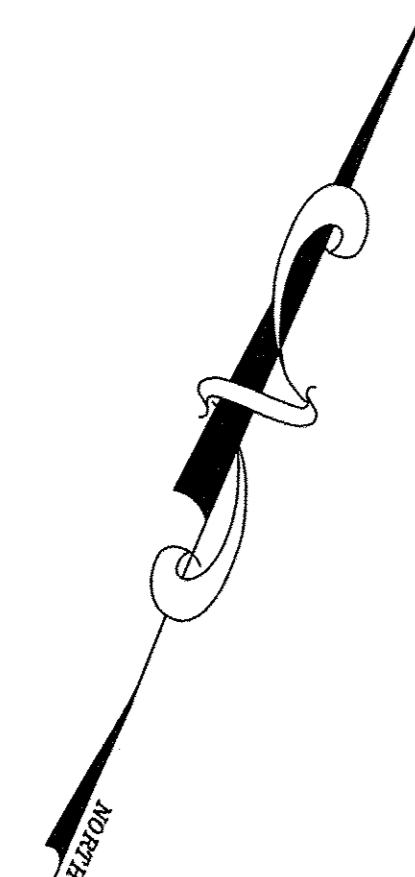


POLARIS ENGINEERING & SURVEYING, INC.  
 34600 CHARDON ROAD - SUITE D  
 WILLOUGHBY HILLS, OHIO  
 44094 (440) 944-4433 (440) 944-3722 (Fax)  
 www.polaris-es.com

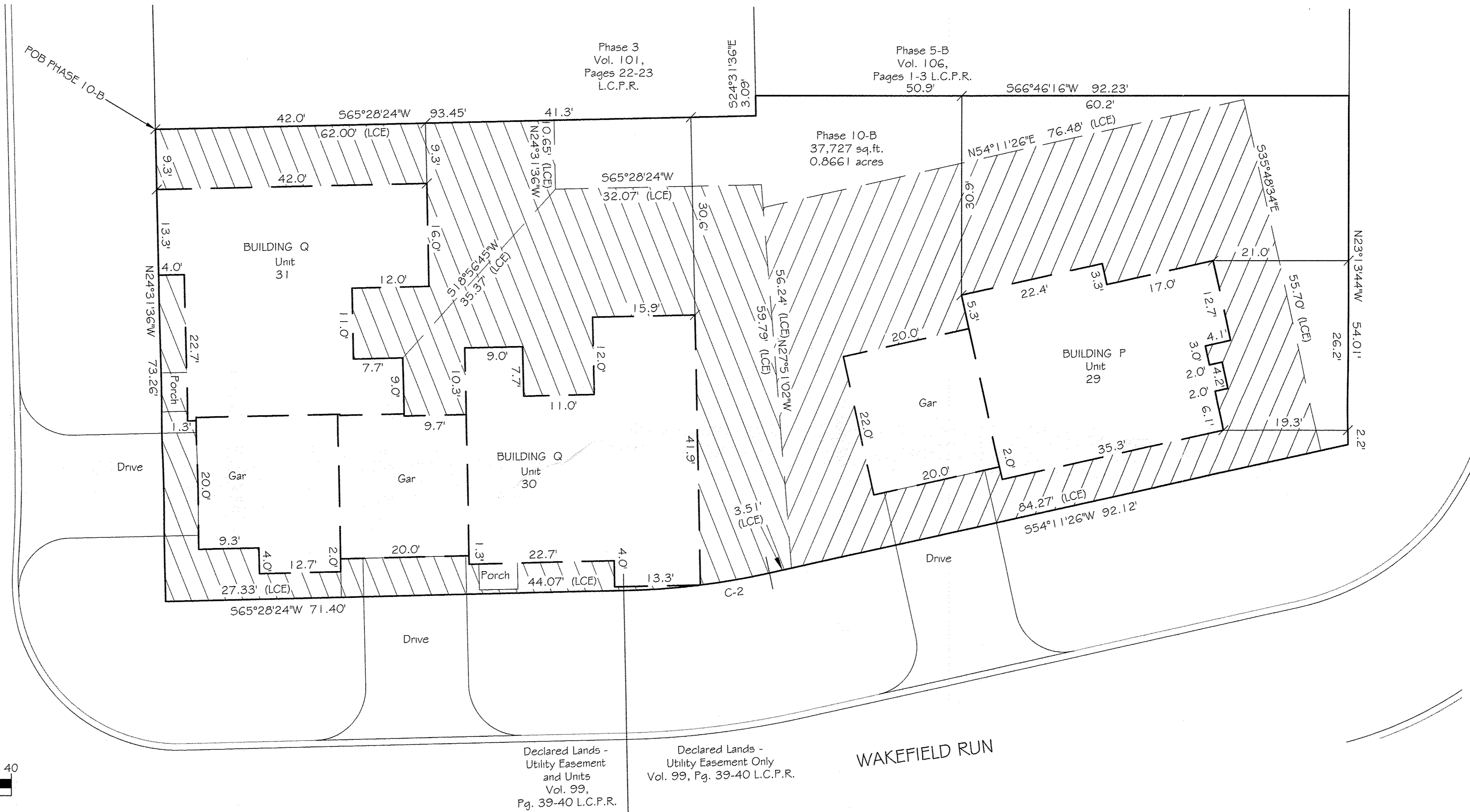
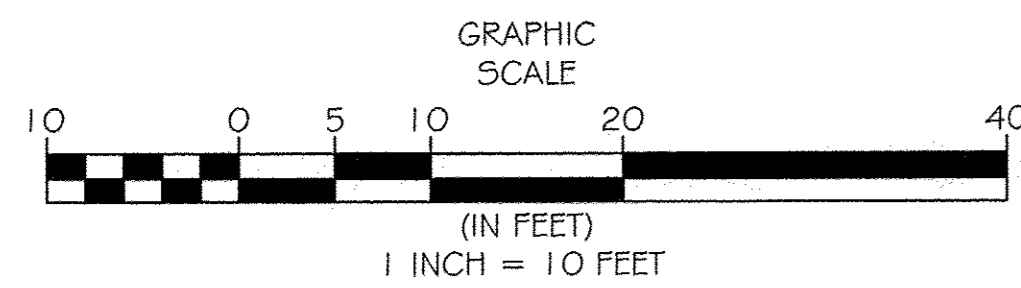
PHASE 10  
 VILLAGE AT ASHTON PLACE  
 CONDOMINIUM  
 AS RE-ESTABLISHED

CONTRACT No.	
14262	
SHEET	OF
02	03

NINTH AMENDMENT TO DECLARATION OF RE-ESTABLISHED CONDOMINIUM  
 THE VILLAGE AT ASHTON PLACE CONDOMINIUM RE-FILE  
 BEING A VACATION OF VILLAGE AT ASHTON PLACE CONDOMINIUM  
 AMENDMENT 1 VOLUME 88 PAGES 40-48  
 AMENDMENT 2 VOLUME 89 PAGES 11-17  
 AMENDMENT 3 VOLUME 90 PAGES 02-05  
 AND AMENDMENT 4 VOLUME 90 PAGES 34-37 LORAIN COUNTY PLAT RECORDS  
 AND RE-ESTABLISHMENT OF CONDOMINIUM  
 IN ORIGINAL RIDGEVILLE TOWNSHIP LOT NUMBER 38,  
 NOW IN THE CITY OF NORTH RIDGEVILLE - LORAIN COUNTY - STATE OF OHIO  
 MAY, 2018  
 SCALE: 1 INCH = 10 FEET



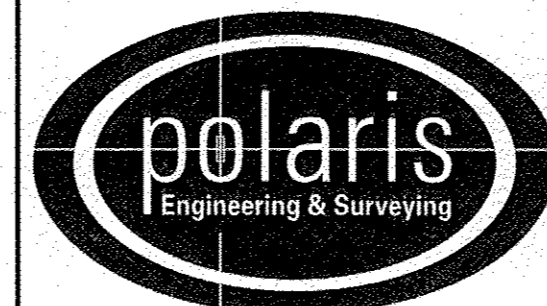
= LIMITED COMMON ELEMENTS



REV. No.	DATE	BY	CHK'D

DATE: 05/05/2018  
 SCALE: HOR. 1"=10'  
 VERT. 1"=0'  
 FOLDER: Surveys/Plats  
 FILENAME: Replat-09  
 TAB: Phase 10-02  
 DRAWN: MPS

VILLAGE AT ASHTON PLACE  
 CONDOMINIUM RE-FILE  
 PHASE 10  
 PART OF ORIGINAL RIDGEVILLE TOWNSHIP LOT 38  
 CITY OF NORTH RIDGEVILLE - LORAIN COUNTY - OHIO



POLARIS ENGINEERING & SURVEYING, INC.  
 34600 CHARDON ROAD - SUITE D  
 WILLOUGHBY HILLS, OHIO  
 44094 (440) 944-4433 (440) 944-3722 (Fax)  
 www.polaris-es.com

PHASE 10  
 VILLAGE AT ASHTON PLACE  
 CONDOMINIUM  
 AS RE-ESTABLISHED

CONTRACT No.	
14262	
SHEET	OF
03	03