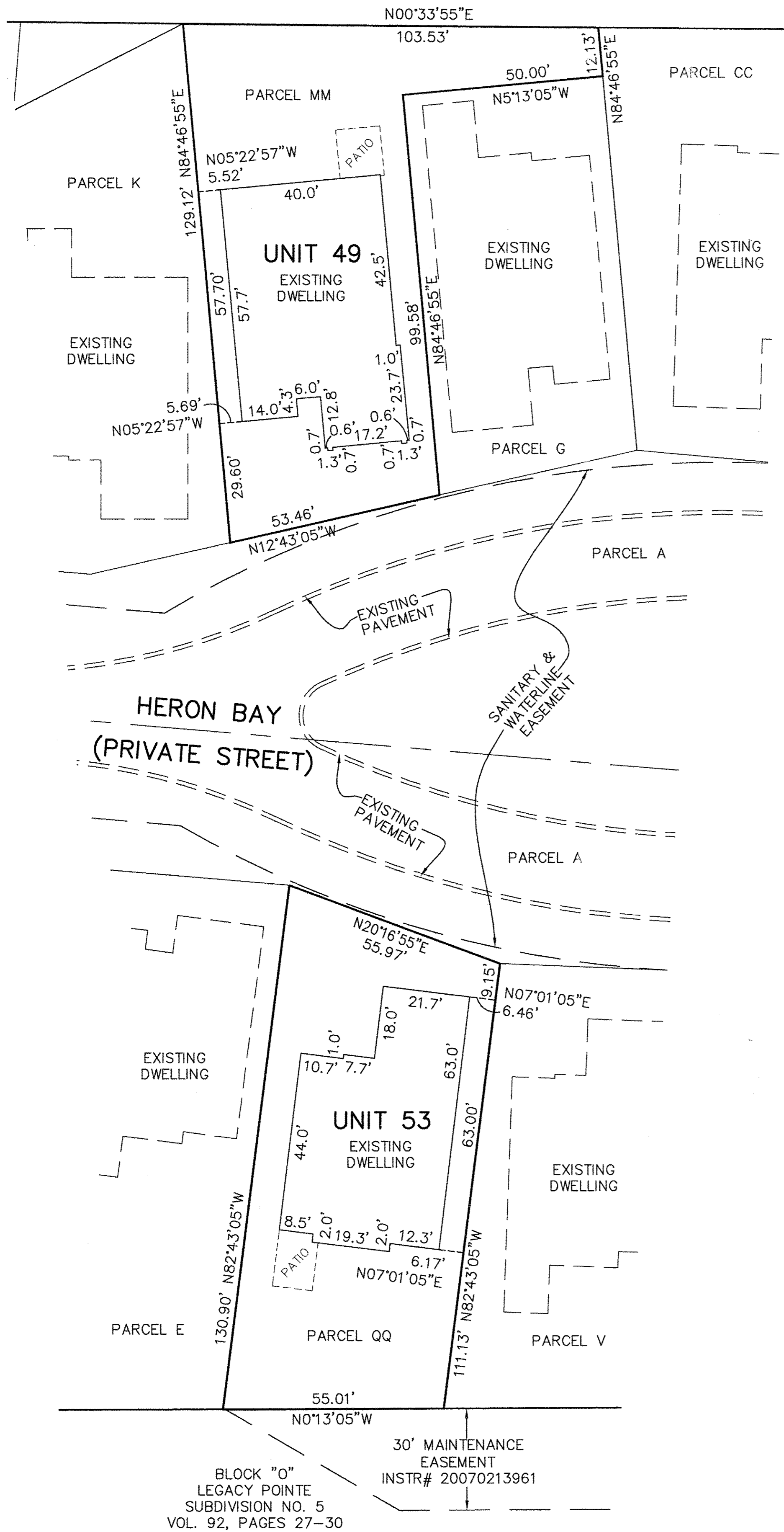


04-00-020-101-222
 LEGACY POINTE LTD.
 INST. #20160575106



UNIT #49 FRONT VIEW



UNIT #49 REAR VIEW



UNIT #53 FRONT VIEW

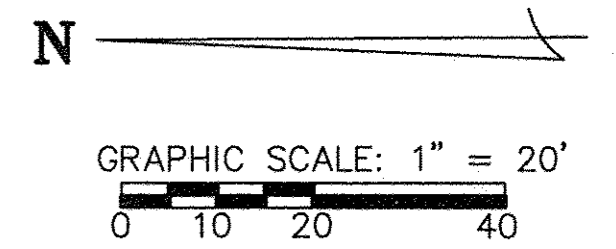


UNIT #53 REAR VIEW

NOTES:

LIMITED COMMON AREAS INCLUDE THE LAND WITHIN 3 FEET FROM THE FOUNDATION AND PATIOS/DECKS/PORCHES/SUNROOMS OF EACH UNIT.

ALL ANGLES BETWEEN WALLS ARE 90° UNLESS OTHERWISE SPECIFIED

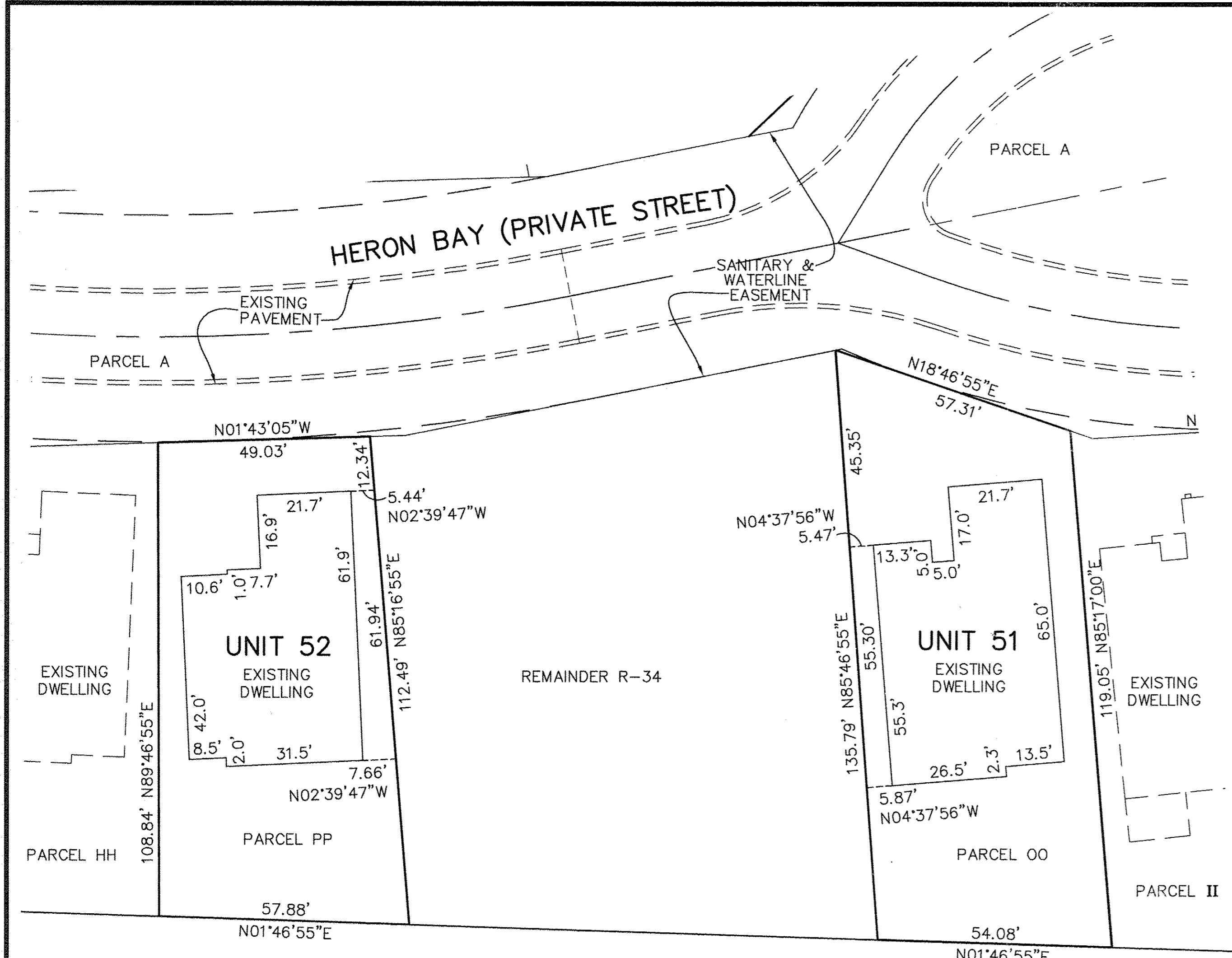


REVISIONS		

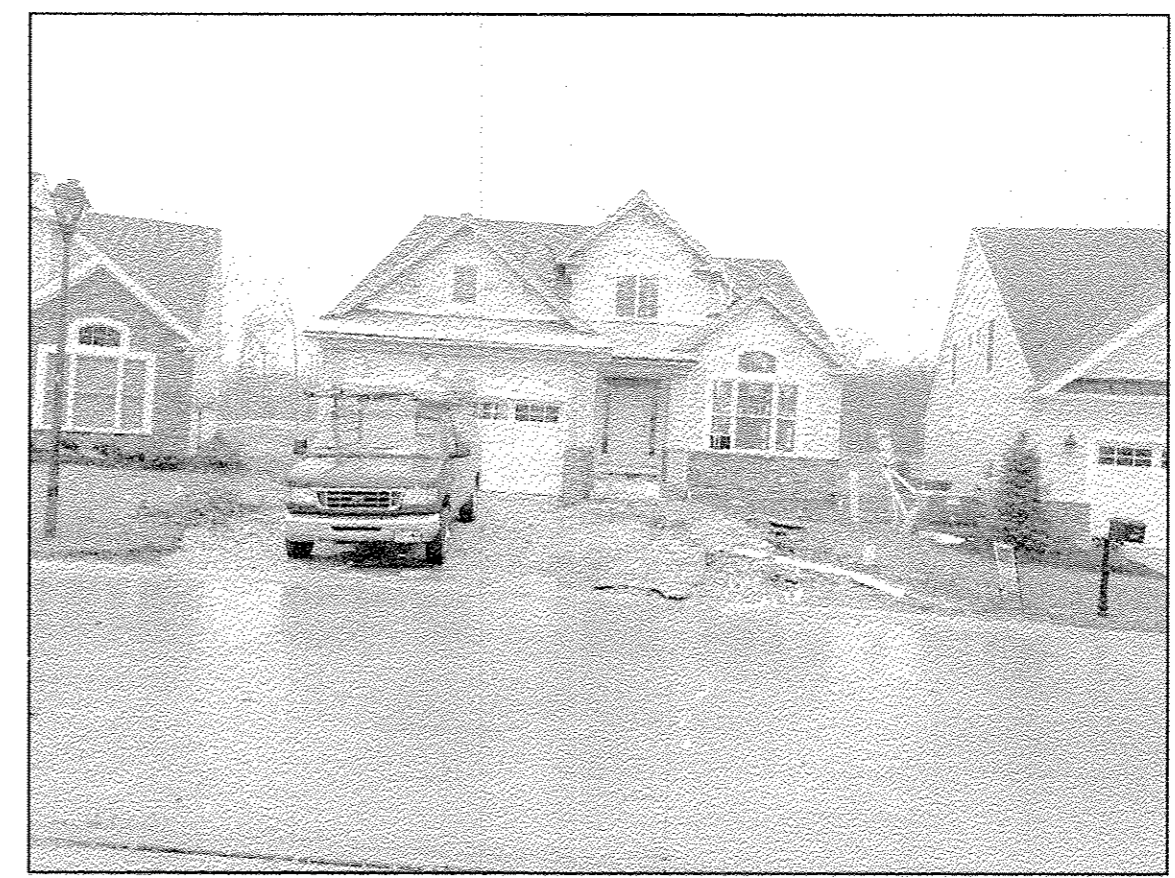
**LEGACY POINTE
 CONDOMINIUM NO. 6 PH 17**
 BEING PART OF BLOCK "P" IN THE LEGACY POINTE SUBDIVISION NO. 5 AS RECORDED IN VOL. 92 OF PLATS, PGS. 27-30 OF LORAIN COUNTY RECORDS, OF PART OF ORIGINAL AVON TWP. SECTION 17 AND PART OF ORIGINAL AVON TWP. SECTION 20 CITY OF AVON LAKE, COUNTY OF LORAIN, OHIO

**THE HENRY G. REITZ
 ENGINEERING COMPANY**
 4214 ROCKY RIVER DRIVE
 CLEVELAND, OHIO 44135
 PHONE: (216) 251-3033

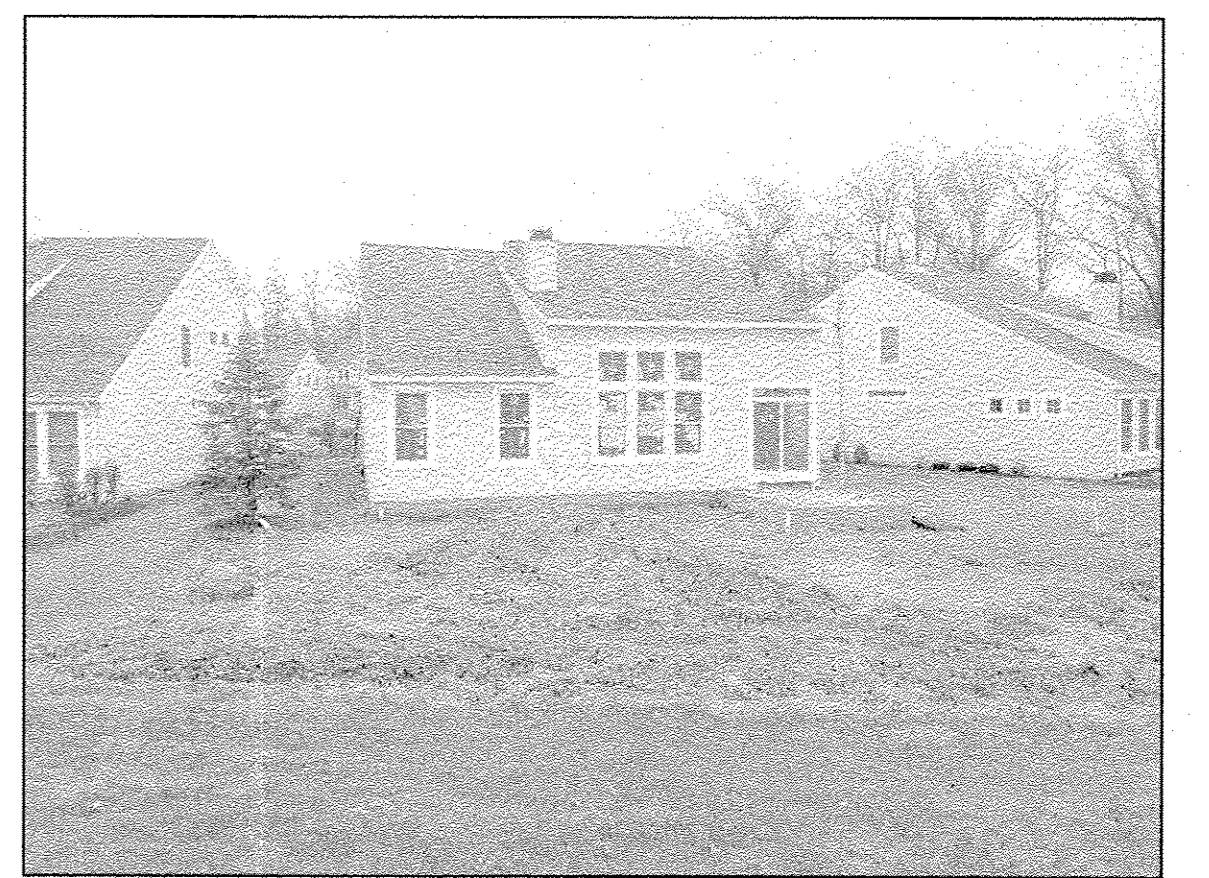
2
 3
 MARCH
 2018



BLOCK "O"
LEGACY POINTE
SUBDIVISION NO. 5
VOL. 92, PAGES 27-30



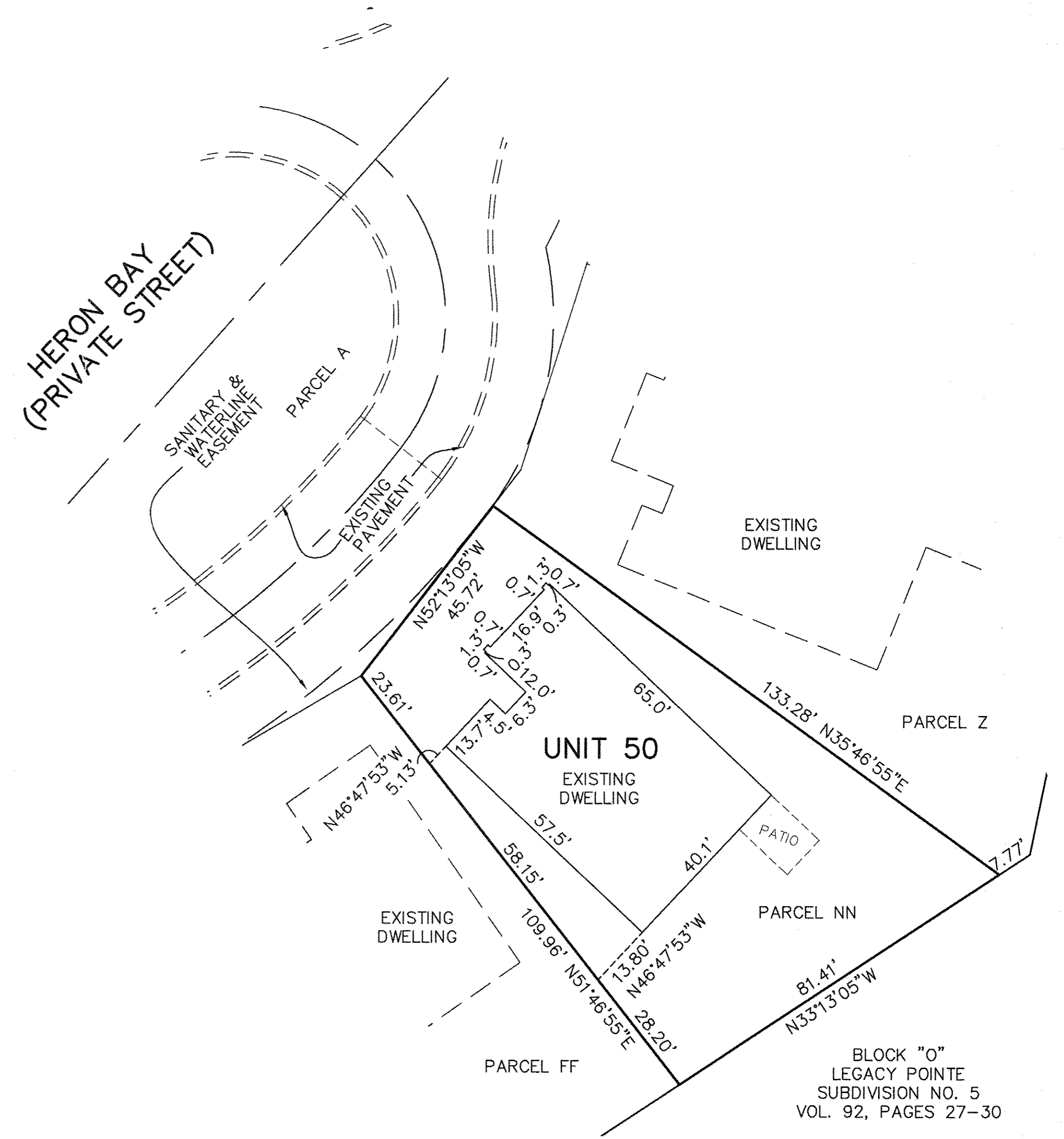
UNIT #50 FRONT VIEW



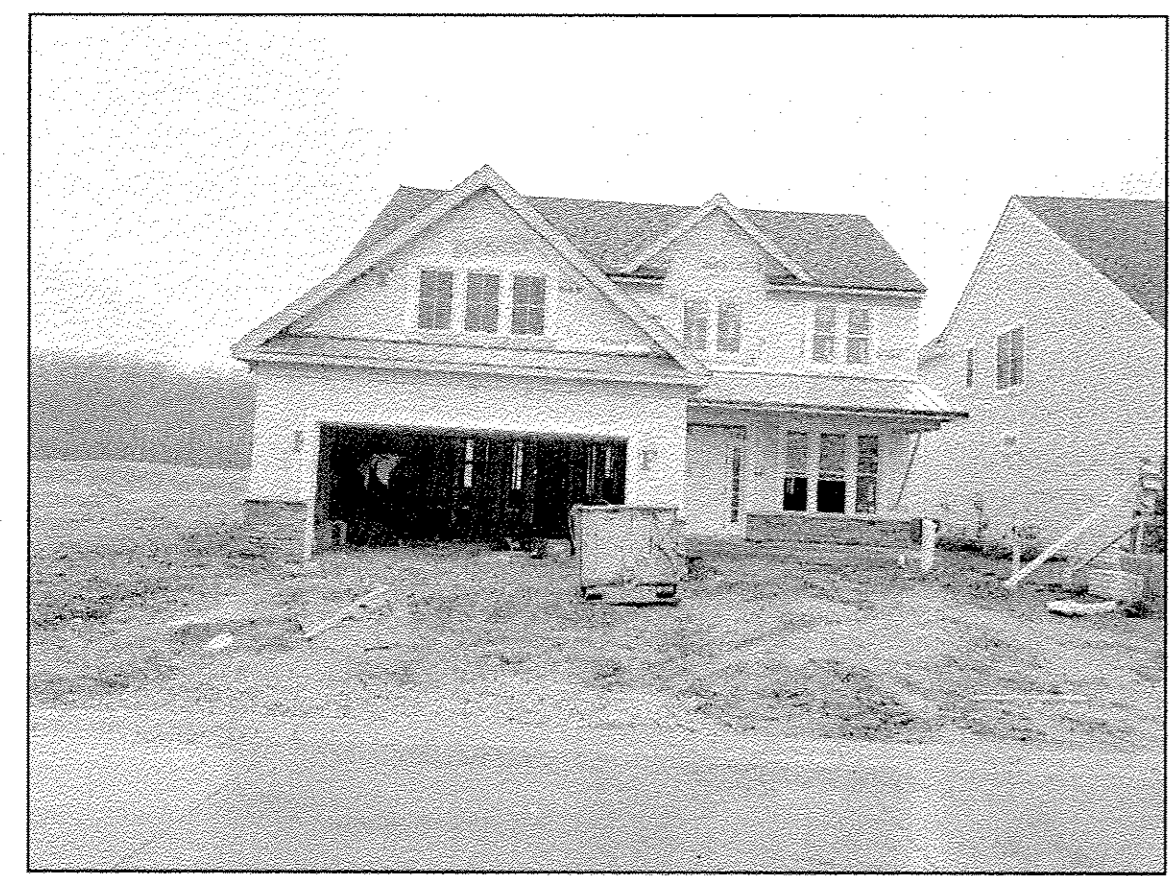
UNIT #50 REAR VIEW



UNIT #51 FRONT VIEW



BLOCK "O"
LEGACY POINTE
SUBDIVISION NO. 5
VOL. 92, PAGES 27-30



UNIT #52 FRONT VIEW

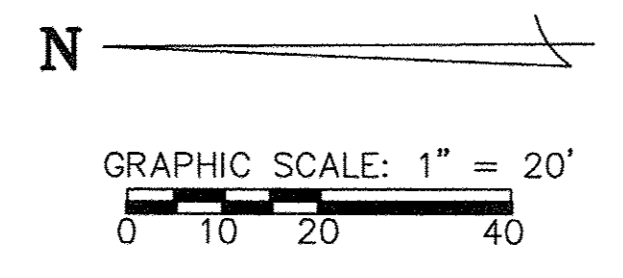


UNIT #52 REAR VIEW



UNIT #51 REAR VIEW

NOTES:
LIMITED COMMON AREAS INCLUDE THE LAND WITHIN 3 FEET FROM THE FOUNDATION AND PATIOS/DECKS/PORCHES/SUNROOMS OF EACH UNIT.
ALL ANGLES BETWEEN WALLS ARE 90° UNLESS OTHERWISE SPECIFIED



REVISIONS		

**LEGACY POINTE
CONDOMINIUM NO. 6 PH 17**
BEING PART OF BLOCK "P" IN THE LEGACY POINTE SUBDIVISION NO. 5 AS RECORDED IN VOL. 92 OF PLATS, PGS. 27-30 OF LORAIN COUNTY RECORDS, OF PART OF ORIGINAL AVON TWP. SECTION 17 AND PART OF ORIGINAL AVON TWP. SECTION 20 CITY OF AVON LAKE, COUNTY OF LORAIN, OHIO

**THE HENRY G. REITZ
ENGINEERING COMPANY**
4214 ROCKY RIVER DRIVE
CLEVELAND, OHIO 44135
PHONE: (216) 251-3033

3
3
MARCH
2018