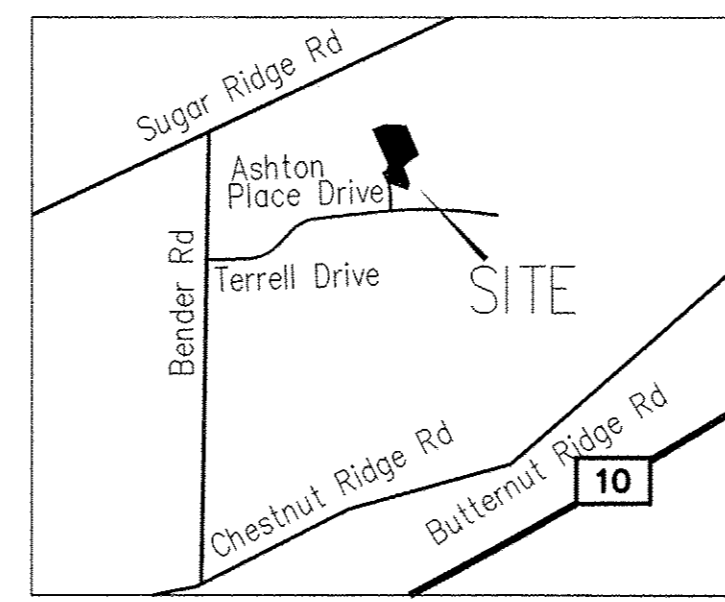
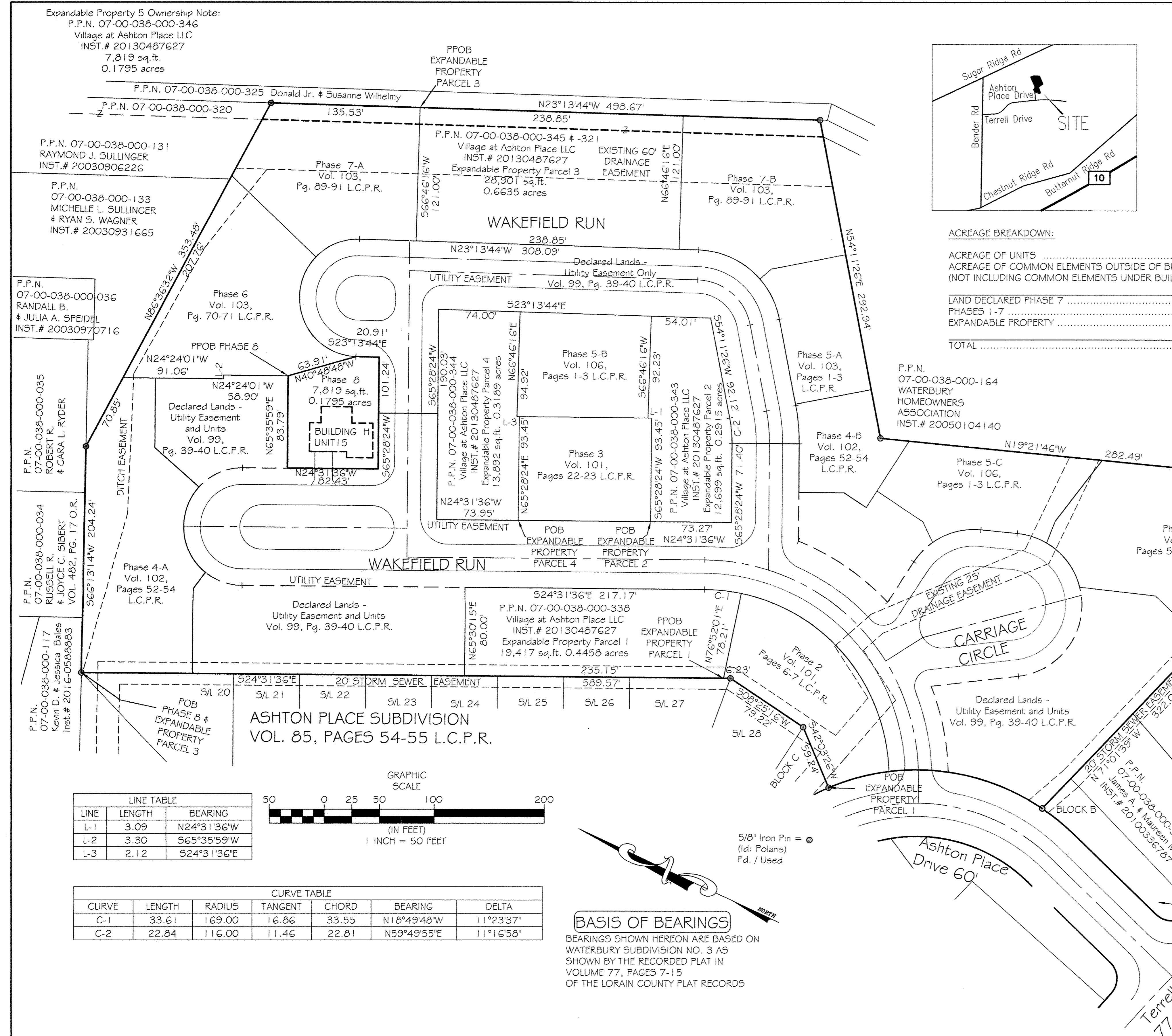
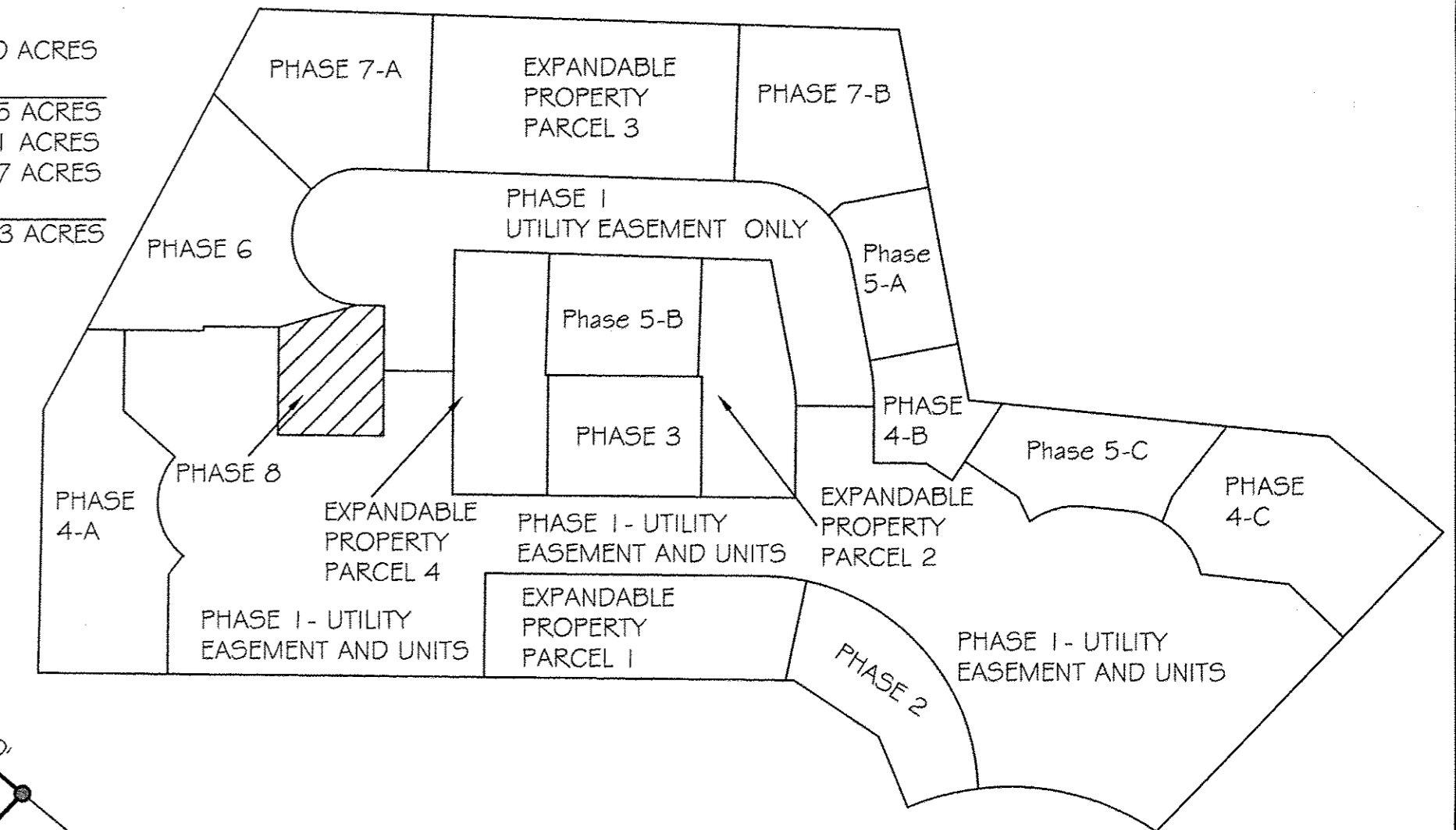


SEVENTH AMENDMENT TO DECLARATION OF RE-ESTABLISHED CONDOMINIUM
 THE VILLAGE AT ASHTON PLACE CONDOMINIUM RE-FILE
 BEING A VACATION OF VILLAGE AT ASHTON PLACE CONDOMINIUM
 AMENDMENT 1 VOLUME 88 PAGES 40-48
 AMENDMENT 2 VOLUME 89 PAGES 11-17
 AMENDMENT 3 VOLUME 90 PAGES 02-05
 AND AMENDMENT 4 VOLUME 90 PAGES 34-37 LORAIN COUNTY PLAT RECORDS
 IN ORIGINAL RIDGEVILLE TOWNSHIP LOT NUMBER 38,
 NOW IN THE CITY OF NORTH RIDGEVILLE - LORAIN COUNTY - STATE OF OHIO
 OCTOBER, 2017
 SCALE: 1 INCH = 50 FEET



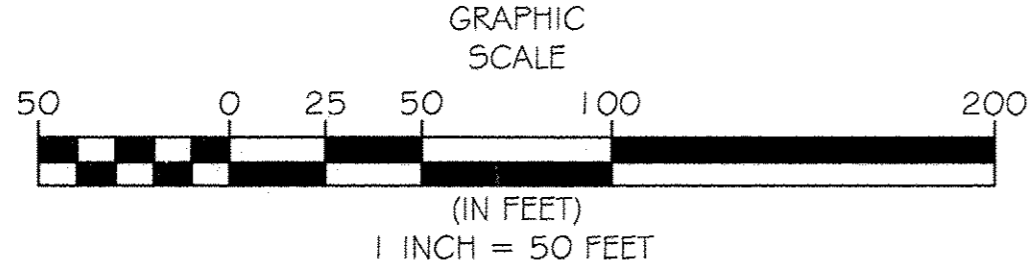
ACREAGE BREAKDOWN:

ACREAGE OF UNITS	0.0465 ACRES
ACREAGE OF COMMON ELEMENTS OUTSIDE OF BUILDINGS (NOT INCLUDING COMMON ELEMENTS UNDER BUILDINGS)	0.1330 ACRES
LAND DECLARED PHASE 7	0.1795 ACRES
PHASES 1-7	7.9041 ACRES
EXPANDABLE PROPERTY	1.7197 ACRES
TOTAL	9.8033 ACRES



LINE TABLE

LINE	LENGTH	BEARING
L-1	3.09	N24°31'36"W
L-2	3.30	S65°35'59"W
L-3	2.12	S24°31'36"E



CURVE TABLE

CURVE	LENGTH	RADIUS	TANGENT	CHORD	BEARING	DELTA
C-1	33.61	169.00	16.86	33.55	N18°49'48"W	11°23'37"
C-2	22.84	116.00	11.46	22.81	N59°49'55"E	11°16'58"

BASIS OF BEARINGS
 BEARINGS SHOWN HEREON ARE BASED ON WATERBURY SUBDIVISION NO. 3 AS SHOWN BY THE RECORDED PLAT IN VOLUME 77, PAGES 7-15 OF THE LORAIN COUNTY PLAT RECORDS

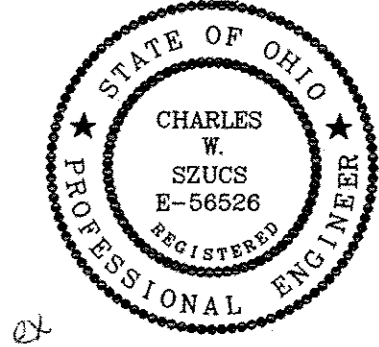
I HEREBY CERTIFY TO THE FOLLOWING: THAT THE LOCATIONS OF THE BUILDING FOUNDATIONS AND DIMENSIONS, AND THEIR FINISHED FLOOR ELEVATIONS ARE ACCURATELY SHOWN FROM A FIELD SURVEY MADE UNDER MY DIRECT SUPERVISION, AND WERE ACTUALLY CONSTRUCTED.

Michael P. Spellacy 10/21/2017 10/21/2017
 MICHAEL P. SPELLACY, P.E. #8469 DATE



I HEREBY CERTIFY THAT THESE DRAWINGS ACCURATELY SHOW EACH BUILDING AS BUILT OR CONSTRUCTED.

Charles W. Szucs 10/21/2017 10/21/2017
 CHARLES W. SZUCS, P.E. #56528 DATE



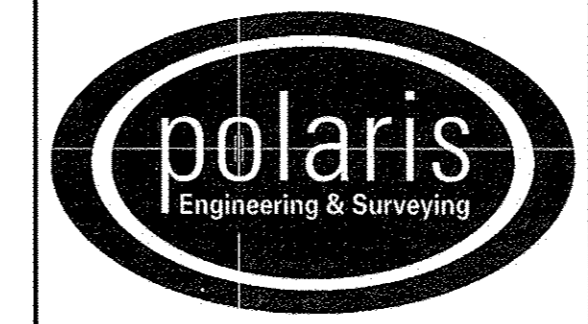
TRANSFERRED
 IN COMPLIANCE WITH SEC. 319.202
 OHIO REV. CODE: Sec. 27
 NOV 29 2017
 J. CRAIG SNODGRASS, CPA, CGFM
 LORAIN COUNTY AUDITOR

FIDELITY NATIONAL TITLE
 5340 MEADOW LANE CT
 SHEFFIELD VILLAGE, OH 44035
 Plat vol. 104
 pg. 22-23

REV. No.	DATE	BY	CHK'D

DATE: 10/21/2017
 SCALE: HOR. 1"=50'
 VERT. 1"=0'
 FOLDER: Surveys/Plats
 FILENAME: Replat-07
 TAB: Phase 8-01
 DRAWN: MPS

**VILLAGE AT ASHTON PLACE
 CONDOMINIUM RE-FILE
 PHASE 8**
 PART OF ORIGINAL RIDGEVILLE TOWNSHIP LOT 38
 CITY OF NORTH RIDGEVILLE - LORAIN COUNTY - OHIO

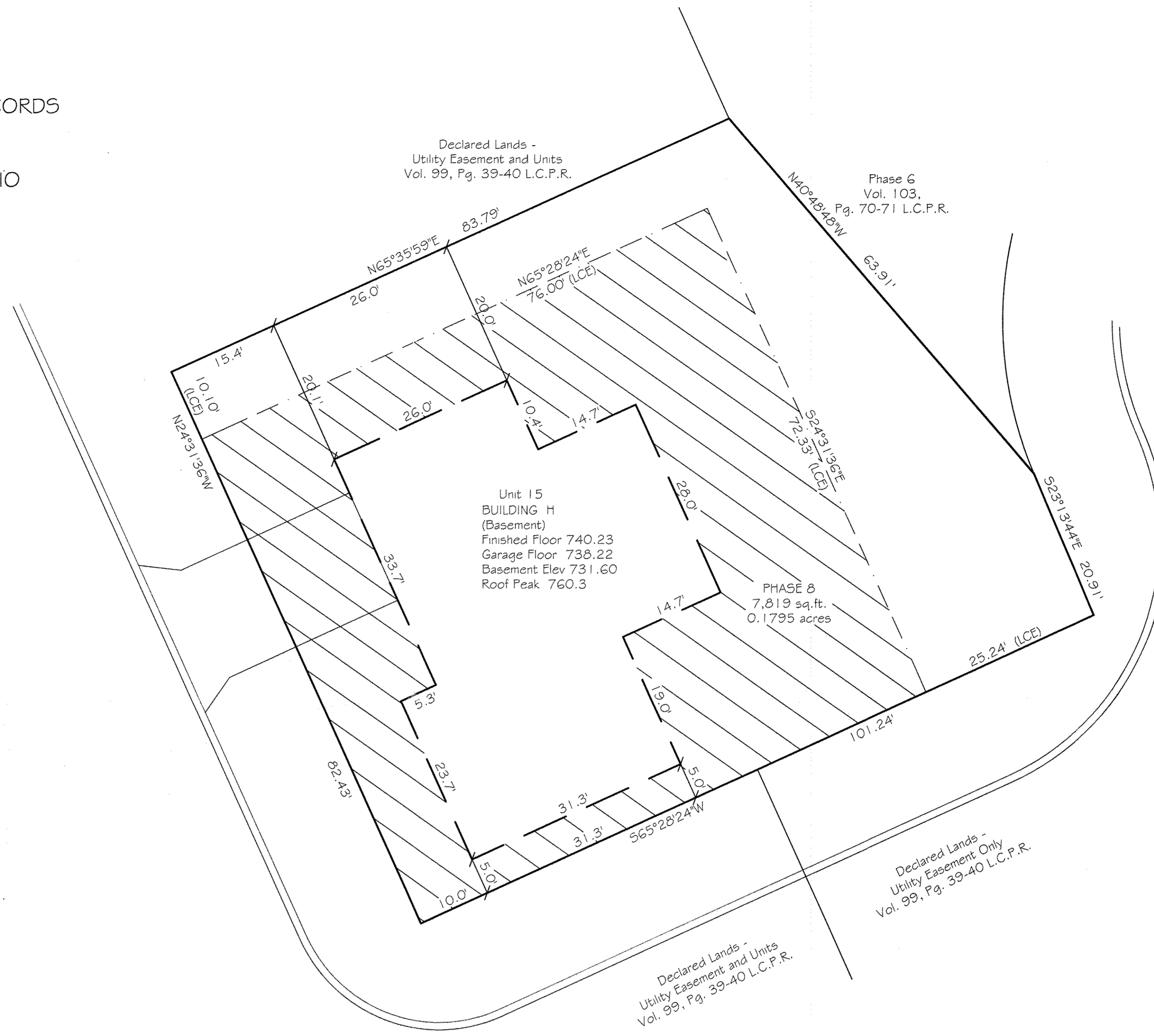


POLARIS ENGINEERING & SURVEYING, INC.
 34600 CHARDON ROAD - SUITE D
 WILLOUGHBY HILLS, OHIO
 44094 (440) 944-4433 (440) 944-3722 (Fax)
 www.polaris-es.com

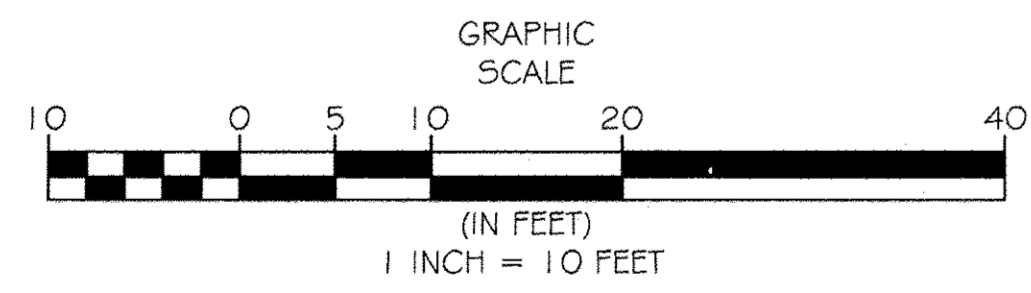
**PHASE 8
 VILLAGE AT ASHTON PLACE
 CONDOMINIUM
 AS RE-ESTABLISHED**

CONTRACT No.	
14262	
SHEET	OF
01	02

SEVENTH AMENDMENT TO DECLARATION OF RE-ESTABLISHED CONDOMINIUM
 THE VILLAGE AT ASHTON PLACE CONDOMINIUM RE-FILE
 BEING A VACATION OF VILLAGE AT ASHTON PLACE CONDOMINIUM
 AMENDMENT 1 VOLUME 88 PAGES 40-48
 AMENDMENT 2 VOLUME 89 PAGES 11-17
 AMENDMENT 3 VOLUME 90 PAGES 02-05
 AND AMENDMENT 4 VOLUME 90 PAGES 34-37 LORAIN COUNTY PLAT RECORDS
 AND RE-ESTABLISHMENT OF CONDOMINIUM
 IN ORIGINAL RIDGEVILLE TOWNSHIP LOT NUMBER 38,
 NOW IN THE CITY OF NORTH RIDGEVILLE - LORAIN COUNTY - STATE OF OHIO
 OCTOBER, 2017
 SCALE: 1 INCH = 10 FEET



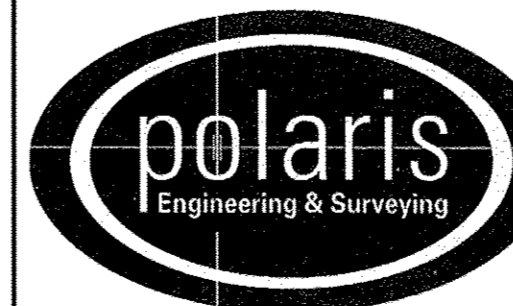
= LIMITED COMMON ELEMENTS



REV. No.	DATE	BY	CHK'D

DATE: 10/21/2017
 SCALE: HOR. 1"=10'
 VERT. 1"=0'
 FOLDER: Surveys/Plats
 FILENAME: Replat-07
 TAB: Phase 8-02
 DRAWN: MPS

VILLAGE AT ASHTON PLACE
 CONDOMINIUM RE-FILE
 PHASE 8
 PART OF ORIGINAL RIDGEVILLE TOWNSHIP LOT 38
 CITY OF NORTH RIDGEVILLE - LORAIN COUNTY - OHIO



POLARIS ENGINEERING & SURVEYING, INC.
 34600 CHARDON ROAD - SUITE D
 WILLOUGHBY HILLS, OHIO
 44094 (440) 944-4433 (440) 944-3722 (Fax)
 www.polans-es.com

PHASE 8
 VILLAGE AT ASHTON PLACE
 CONDOMINIUM
 AS RE-ESTABLISHED

CONTRACT No.	
14262	
SHEET	OF
02	02