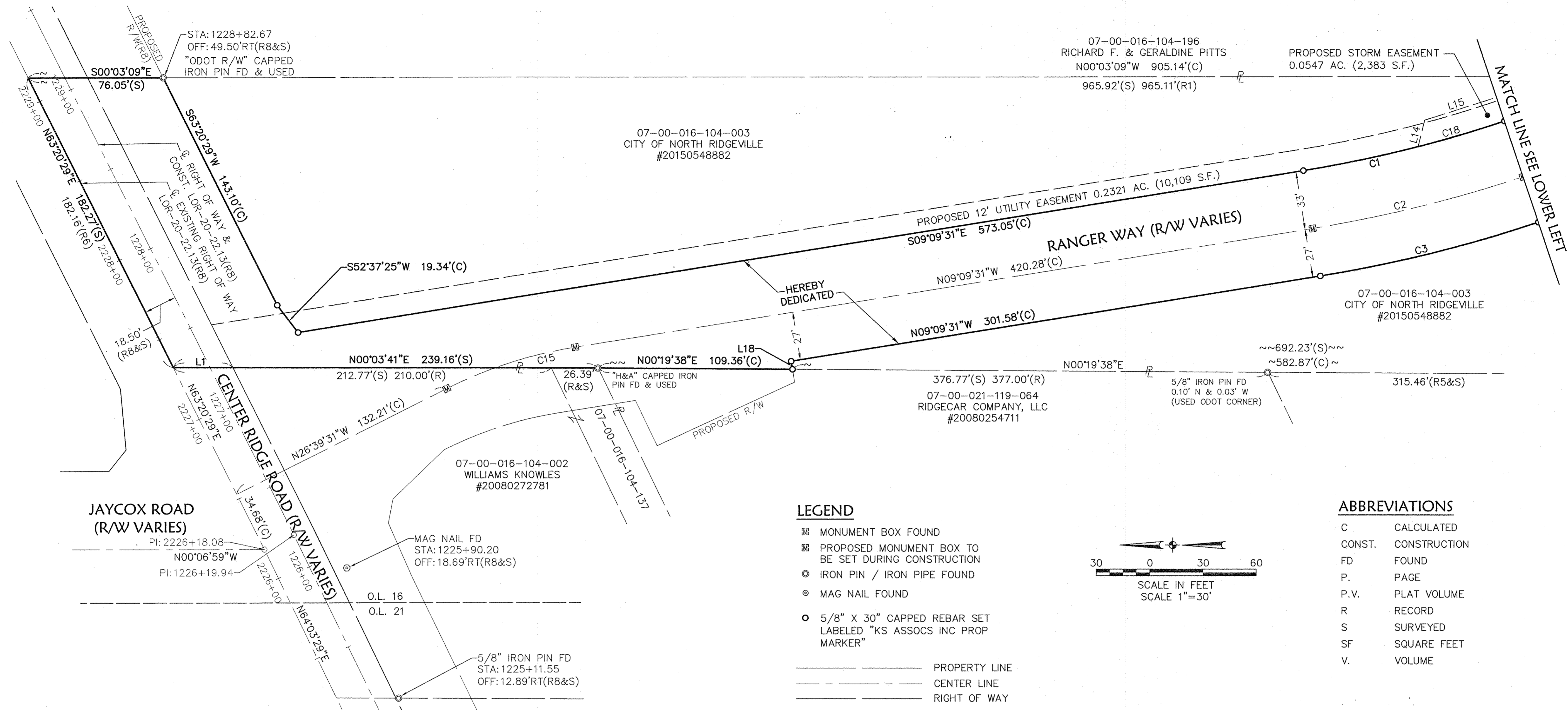
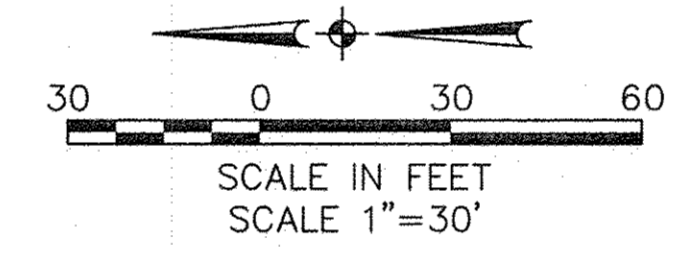


R:\15000\15030\CIVIL 3D 2014\CURRENT DRAWINGS\BASE DRAWINGS\DWG\15030 Dedication Plat.dwg 7/26/2017



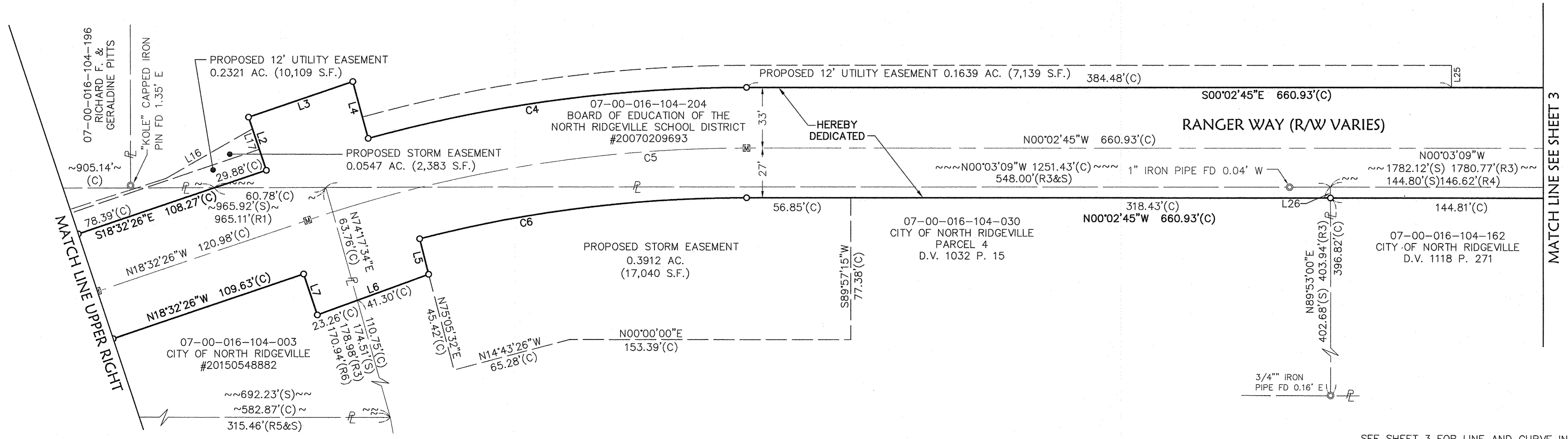
LEGEND

- ☒ MONUMENT BOX FOUND
- ☒ PROPOSED MONUMENT BOX TO BE SET DURING CONSTRUCTION
- ⊙ IRON PIN / IRON PIPE FOUND
- ⊙ MAG NAIL FOUND
- 5/8" X 30" CAPPED REBAR SET LABELED "KS ASSOCS INC PROP MARKER"
- PROPERTY LINE
- - - CENTER LINE
- - - RIGHT OF WAY



ABBREVIATIONS

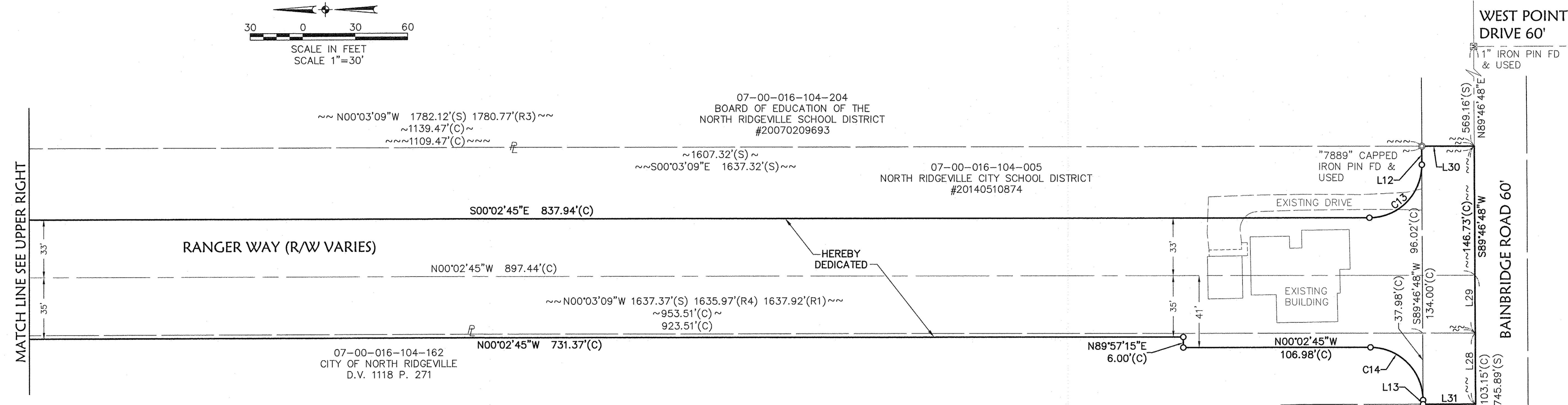
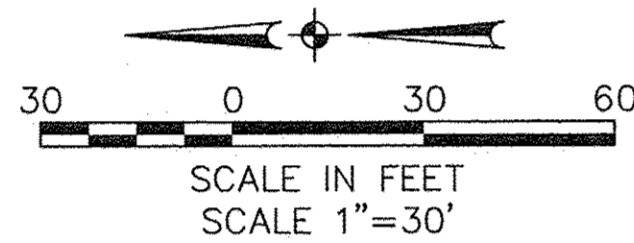
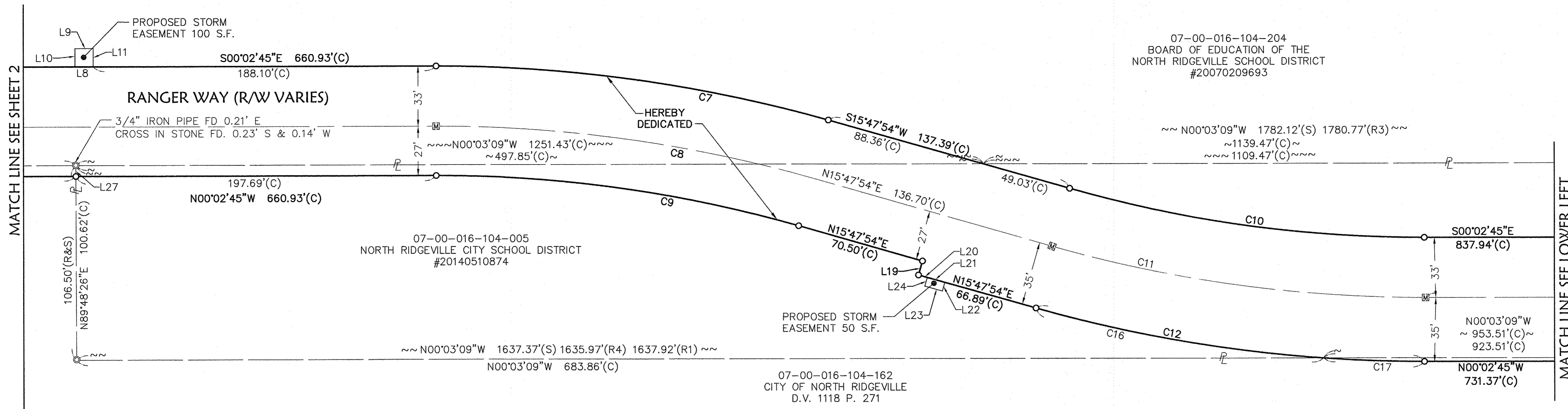
- C CALCULATED
- CONST. CONSTRUCTION
- FD FOUND
- P. PAGE
- P.V. PLAT VOLUME
- R RECORD
- S SURVEYED
- SF SQUARE FEET
- V. VOLUME



SEE SHEET 3 FOR LINE AND CURVE INFORMATION

DATE:	5-30-17	BY:	MM						
DRAWN BY:	TMB	CHECKED BY:	TMB						
DWG. NAME:	15030 Dedication Plat	CIVIL 3D:	980						
PATH:		F.B.:							
REVISIONS:	<table border="1"> <tr> <th>NO.</th> <th>DESCRIPTION</th> <th>DATE</th> </tr> <tr> <td> </td> <td> </td> <td> </td> </tr> </table>			NO.	DESCRIPTION	DATE			
NO.	DESCRIPTION	DATE							
<p>KS Associates, Inc. 260 Burns Road, Suite 100 Elyria, OH 44035 P 440 365 4730 F 440 365 4790 www.ksassociates.com</p>									
<p>RANGER WAY DEDICATION PLAT PART OF ORIGINAL RIDGEVILLE TOWNSHIP LOT NO. 16 CITY OF NORTH RIDGEVILLE, COUNTY OF LORAIN STATE OF OHIO</p>									
SHEET	2	OF	3						
JOB NO.	15030								

R:\15000\CIVIL 3D 2014\CURRENT DRAWINGS\BASE DRAWINGS\DWG\15030 Dedication Plat.dwg 7/26/2017



MATCH LINE SEE UPPER RIGHT

WEST POINT DRIVE 60'

BAINBRIDGE ROAD 60'

KENSINGTON ROAD 60'

MCARTHUR ROAD 60'

CURVE TABLE						
CURVE	LENGTH	RADIUS	DELTA	TANGENT	BEARING	CHORD
C1	116.59'(C)	712.00'	9°22'56"	58.43'	S13° 50' 58"E	116.46'
C2	121.99'(C)	745.00'	9°22'56"	61.13'	N13° 50' 58"W	121.86'
C3	126.41'(C)	772.00'	9°22'56"	63.35'	N13° 50' 58"W	126.27'
C4	208.88'(C)	788.00'	15°11'17"	105.06'	S7° 38' 24"E	208.27'
C5	243.71'(C)	755.00'	18°29'41"	122.92'	N9° 17' 36"W	242.65'
C6	180.25'(C)	728.00'	14°11'10"	90.59'	N7° 08' 20"W	179.79'
C7	217.91'(C)	788.00'	15°50'39"	109.65'	S7° 52' 35"W	217.22'
C8	208.78'(C)	755.00'	15°50'39"	105.06'	N7° 52' 35"E	208.12'
C9	201.32'(C)	728.00'	15°50'39"	101.30'	N7° 52' 35"E	200.68'

CURVE TABLE						
CURVE	LENGTH	RADIUS	DELTA	TANGENT	BEARING	CHORD
C10	196.89'(C)	712.00'	15°50'39"	99.08'	S7° 52' 35"W	196.27'
C11	207.40'(C)	750.00'	15°50'39"	104.37'	N7° 52' 35"E	206.74'
C12	215.70'(C)	780.00'	15°50'39"	108.54'	N7° 52' 35"E	215.01'
C13	47.22'(C)	30.00'	90°10'27"	30.09'	S45° 07' 59"E	42.49'
C14	47.03'(C)	30.00'	89°49'33"	29.91'	N44° 52' 01"E	42.36'
C15	76.36'(C)	250.00'	17°30'00"	38.48'	N17° 54' 31"W	76.06'
C16	160.37'(C)	780.00'	11°46'49"	80.47'	S9° 54' 30"W	160.09'
C17	55.33'(C)	780.00'	4°03'51"	27.67'	S1° 59' 10"W	55.31'
C18	50.62'(C)	712.00'	4°04'26"	25.32'	S16° 30' 13"E	50.61'

LINE TABLE		
LINE	BEARING	LENGTH
L1	N00°03'41"E	33.59'(S)
L2	N71°27'34"E	30.50'(C)
L3	S18°40'09"E	60.02'(C)
L4	S74°45'58"W	32.00'(C)
L5	S75°46'05"W	20.00'(C)
L6	N19°52'16"W	64.56'(C)
L7	N71°27'34"E	23.50'(C)
L8	N00°02'45"W	10.00'(C)
L9	N00°02'45"W	10.00'(C)
L10	S89°57'15"W	10.00'(C)
L11	N89°57'15"E	10.00'(C)

LINE TABLE		
LINE	BEARING	LENGTH
L12	N89°46'48"E	10.48'(C)
L13	N89°46'48"E	2.34'(C)
L14	S76°02'11"E	15.31'(C)
L15	S17°40'06"E	97.27'(C)
L16	S29°41'50"E	54.39'(C)
L17	S71°27'34"W	23.75'(C)
L18	S80°46'24"W	4.63'(C)
L19	S74°12'06"E	8.00'(C)
L20	S15°47'54"W	5.00'(C)
L21	S15°47'54"W	10.00'(C)
L22	N74°12'06"W	5.00'(C)

LINE TABLE		
LINE	BEARING	LENGTH
L23	N15°47'54"E	10.00'(C)
L24	S74°12'06"E	5.00'(C)
L25	N89°57'15"E	12.00'(C)
L26	N89°53'00"E	5.86'(C)
L27	S89°48'26"W	5.88'(C)
L28	S89°46'48"W	40.23'(S)
L29	S89°46'48"W	106.50'(S)
L30	S00°03'09"E	30.00'(S)
L31	N00°13'12"W	30.00'(S)
L32	N89°46'48"E	30.00'(S)

BY		DESCRIPTION		DATE		REVISIONS	
DATE	5-30-17	DRAWN BY	MAM	CHECKED BY	TJF	DATE	7/26/17
DWG. NAME	15030 Dedication Plat			DATE	7/26/17	DESCRIPTION	CHANGED ROAD NAME TO RANGER WAY
 KS ASSOCIATES KS Associates, Inc. 260 Burns Road, Suite 100 Elyria, OH 44035 P 440 365 4730 F 440 365 4790 www.ksassociates.com							
RANGER WAY DEDICATION PLAT PART OF ORIGINAL RIDGEVILLE TOWNSHIP LOT NO. 16 CITY OF NORTH RIDGEVILLE, COUNTY OF LORAIN STATE OF OHIO							
SHEET		3		OF		3	
JOB NO. 15030							