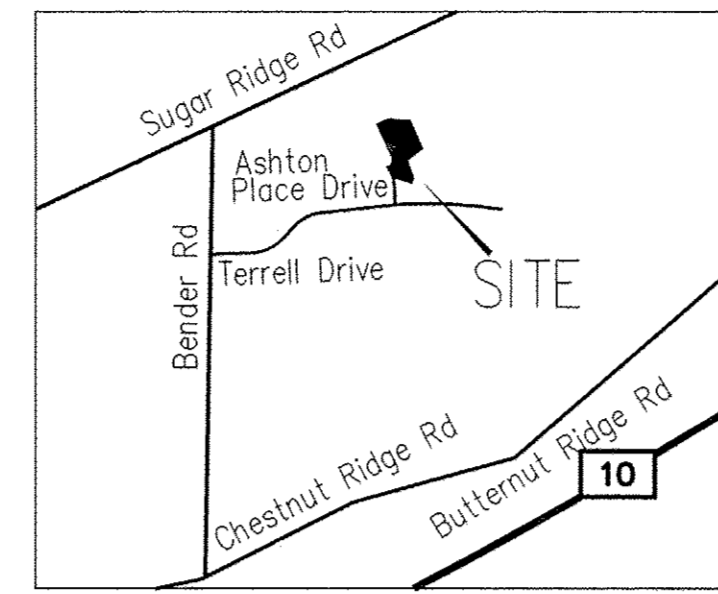
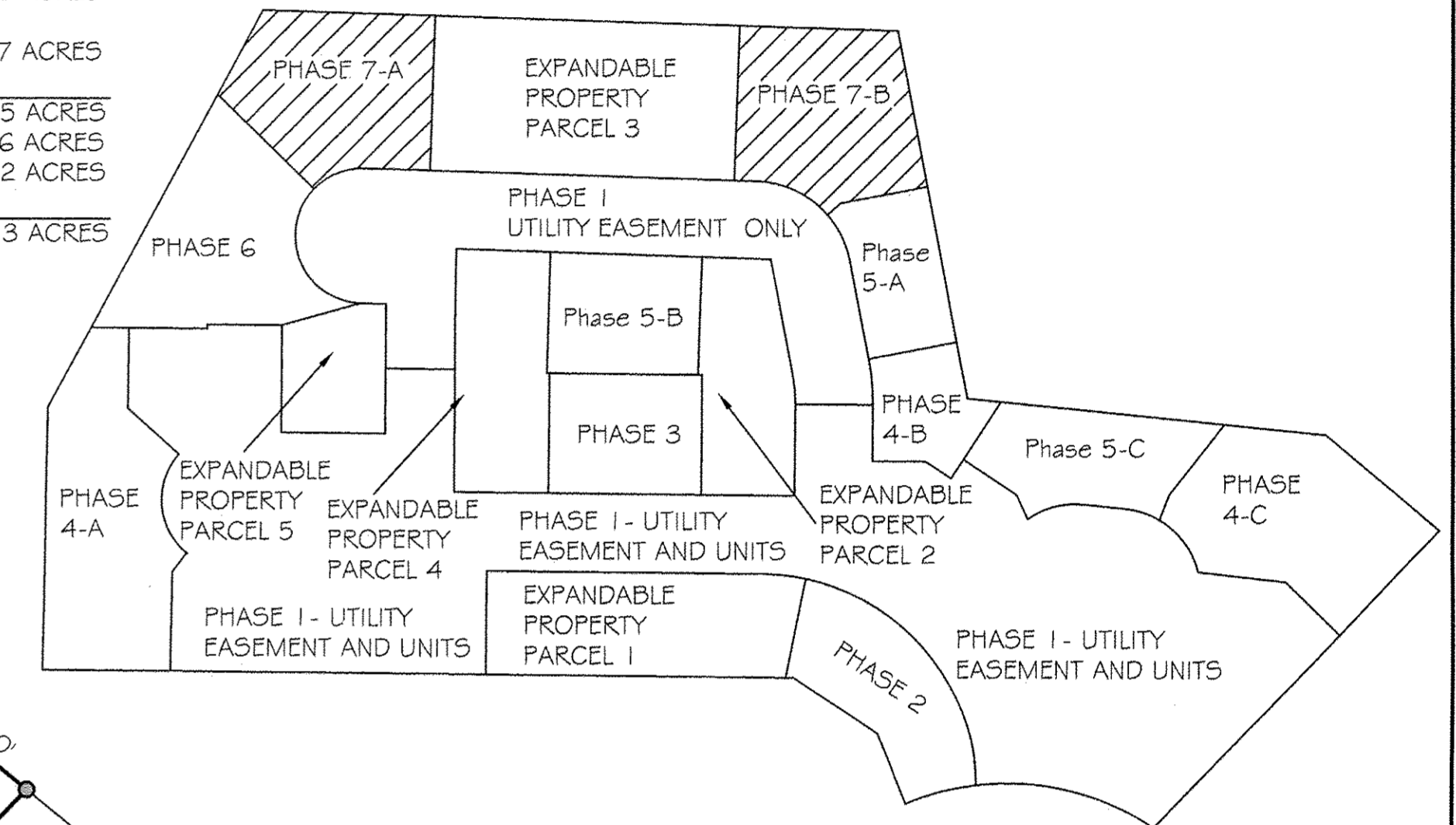


SIXTH AMENDMENT TO DECLARATION OF RE-ESTABLISHED CONDOMINIUM THE VILLAGE AT ASHTON PLACE CONDOMINIUM RE-FILE BEING A VACATION OF VILLAGE AT ASHTON PLACE CONDOMINIUM AMENDMENT 1 VOLUME 88 PAGES 40-48 AMENDMENT 2 VOLUME 89 PAGES 11-17 AMENDMENT 3 VOLUME 90 PAGES 02-05 AND AMENDMENT 4 VOLUME 90 PAGES 34-37 LORAIN COUNTY PLAT RECORDS IN ORIGINAL RIDGEVILLE TOWNSHIP LOT NUMBER 38, NOW IN THE CITY OF NORTH RIDGEVILLE - LORAIN COUNTY - STATE OF OHIO AUGUST, 2017
SCALE: 1 INCH = 50 FEET



ACREAGE BREAKDOWN:

ACREAGE OF UNITS	0.1528 ACRES
ACREAGE OF COMMON ELEMENTS OUTSIDE OF BUILDINGS (NOT INCLUDING COMMON ELEMENTS UNDER BUILDINGS)	0.6717 ACRES
LAND DECLARED PHASE 7	0.8245 ACRES
PHASES 1-6	7.0796 ACRES
EXPANDABLE PROPERTY	1.8992 ACRES
TOTAL	9.8033 ACRES

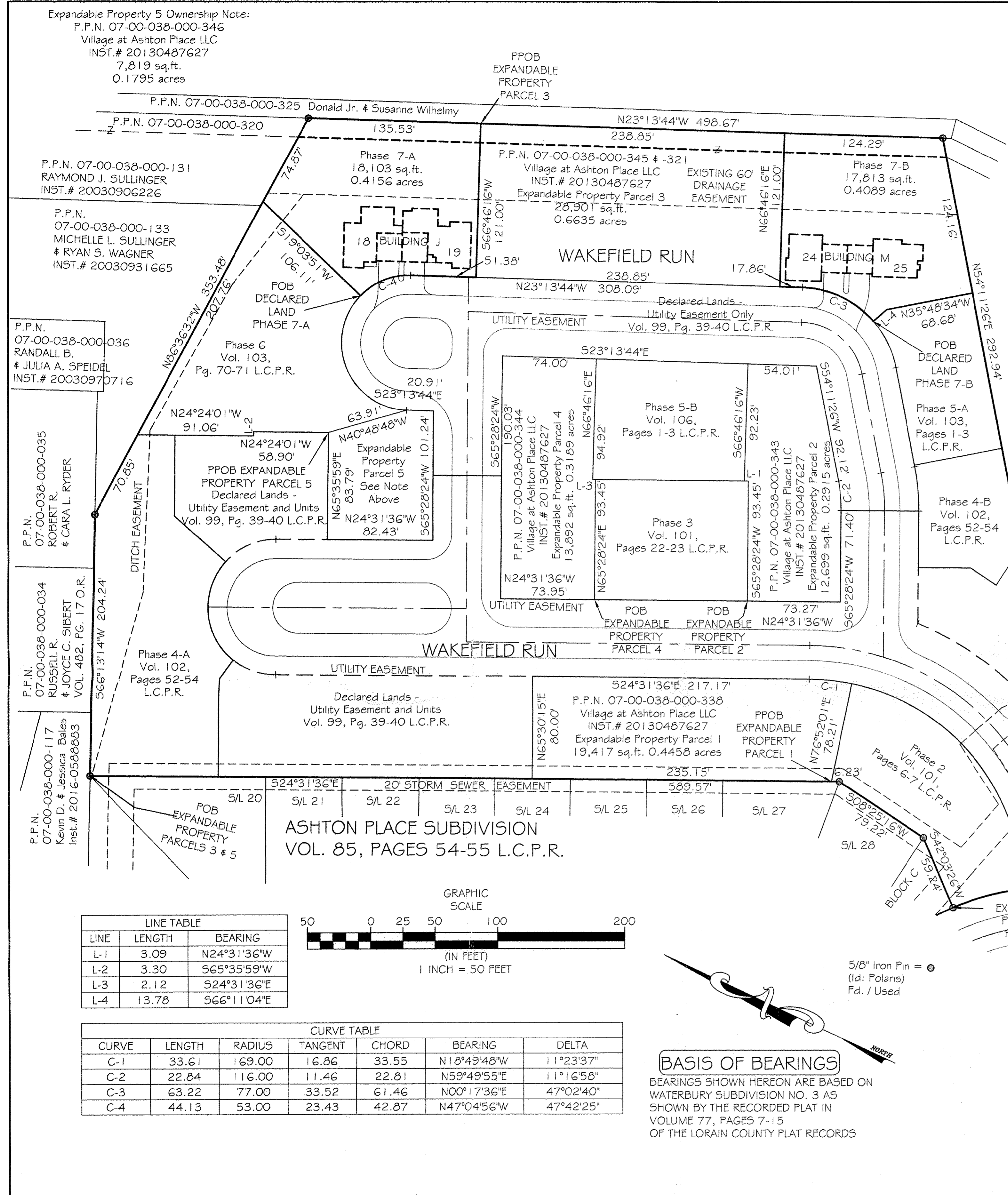
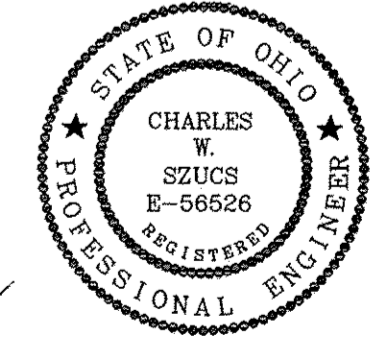


2017-0642048
FIDELITY NATIONAL TITLE
5340 MEADOW LANE CT
SHEFFIELD VILLAGE, OH 44035
Plat Vol 103
Pg 89, 90, 91

I HEREBY CERTIFY TO THE FOLLOWING: THAT THE LOCATIONS OF THE BUILDING FOUNDATIONS AND DIMENSIONS, AND THEIR FINISHED FLOOR ELEVATIONS ARE ACCURATELY SHOWN FROM A FIELD SURVEY MADE UNDER MY DIRECT SUPERVISION, AND WERE ACTUALLY CONSTRUCTED.
MICHAEL P. SPELLACY #8169
8/21/17
08/21/2017 DATE

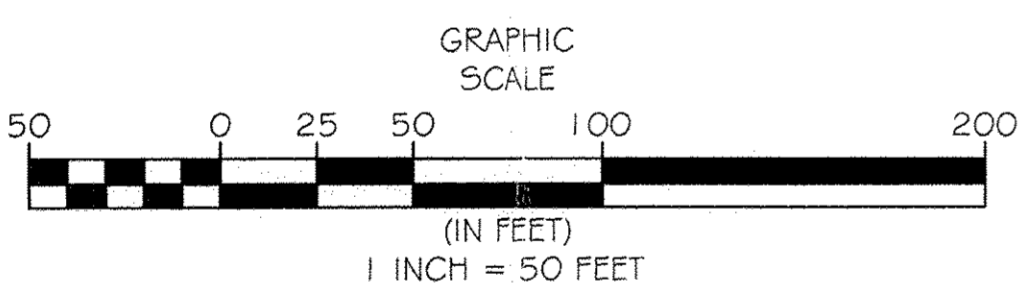


I HEREBY CERTIFY THAT THESE DRAWINGS ACCURATELY SHOW EACH BUILDING AS BUILT OR CONSTRUCTED.
CHARLES W. SZUCS, P.E. #56526
08/21/2017 DATE
TRANSFERRED
IN COMPLIANCE WITH SEC. 319-202 OHIO REV. CODE
AUG 28 2017
J. CRAIG SNODGRASS, CPA, CGFM
LORAIN COUNTY AUDITOR



LINE TABLE

LINE	LENGTH	BEARING
L-1	3.09	N24°31'36"W
L-2	3.30	S65°35'59"E
L-3	2.12	S24°31'36"E
L-4	13.78	S66°11'04"E



CURVE TABLE

CURVE	LENGTH	RADIUS	TANGENT	CHORD	BEARING	DELTA
C-1	33.61	169.00	16.86	33.55	N18°49'48"W	11°23'37"
C-2	22.84	116.00	11.46	22.81	N59°49'55"E	11°16'58"
C-3	63.22	77.00	33.52	61.46	N00°17'36"E	47°02'40"
C-4	44.13	53.00	23.43	42.87	N47°04'56"W	47°42'25"

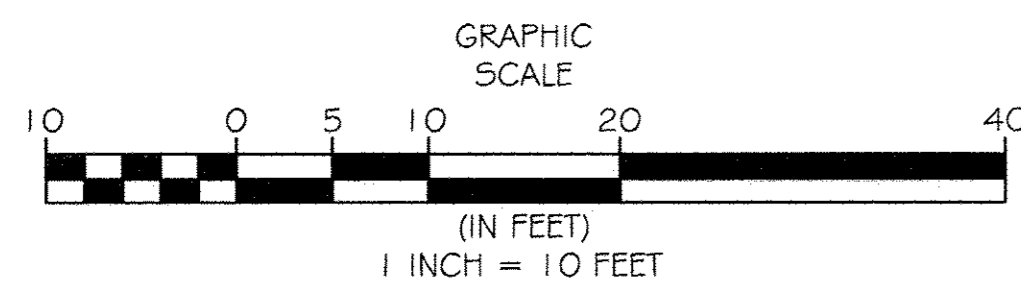
BASIS OF BEARINGS
BEARINGS SHOWN HEREON ARE BASED ON WATERBURY SUBDIVISION NO. 3 AS SHOWN BY THE RECORDED PLAT IN VOLUME 77, PAGES 7-15 OF THE LORAIN COUNTY PLAT RECORDS

REV. No.	DATE	BY	CHK'D	DATE: 08/21/2017	<p>VILLAGE AT ASHTON PLACE CONDOMINIUM RE-FILE PHASE 7</p> <p>PART OF ORIGINAL RIDGEVILLE TOWNSHIP LOT 38 CITY OF NORTH RIDGEVILLE - LORAIN COUNTY - OHIO</p> <p>POLARIS ENGINEERING & SURVEYING, INC. 34600 CHARDON ROAD - SUITE D WILLOUGHBY HILLS, OHIO 44094 (440) 944-4433 (440) 944-3722 (Fax) www.polans-es.com</p>	<p>PHASE 7 VILLAGE AT ASHTON PLACE CONDOMINIUM AS RE-ESTABLISHED</p>	CONTRACT No.	
				SCALE: HOR. 1"=50'			14262	
				VERT. 1"=0'			SHEET	OF
				FOLDER: Surveys/Plats			01	03
				FILENAME: Replat-06				

SIXTH AMENDMENT TO DECLARATION OF
 RE-ESTABLISHED CONDOMINIUM
 THE VILLAGE AT ASHTON PLACE CONDOMINIUM RE-FILE
 BEING A VACATION OF VILLAGE AT ASHTON PLACE CONDOMINIUM
 AMENDMENT 1 VOLUME 88 PAGES 40-48
 AMENDMENT 2 VOLUME 89 PAGES 11-17
 AMENDMENT 3 VOLUME 90 PAGES 02-05
 AND AMENDMENT 4 VOLUME 90 PAGES 34-37
 LORAIN COUNTY PLAT RECORDS
 AND RE-ESTABLISHMENT OF CONDOMINIUM
 IN ORIGINAL RIDGEVILLE TOWNSHIP LOT NUMBER 38,
 NOW IN THE CITY OF NORTH RIDGEVILLE - LORAIN COUNTY
 - STATE OF OHIO
 AUGUST, 2017
 SCALE: 1 INCH = 10 FEET

CURVE TABLE						
CURVE	LENGTH	RADIUS	TANGENT	CHORD	BEARING	DELTA
C-4	44.13	53.00	23.43	42.87	N47°04'56"W	47°42'25"

 = LIMITED COMMON ELEMENTS

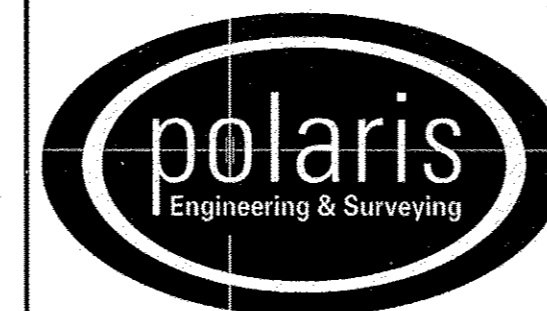


P.P.N. 07-00-038-000-345 # -321
 Village at Ashton Place LLC
 INST.# 20130487627
 Expandable Property Parcel 3
 28,901 sq.ft.
 0.6635 acres

REV. No.	DATE	BY	CHK'D

DATE: 08/21/2017
 SCALE: HOR. 1" = 10'
 VERT. 1" = 0'
 FOLDER: Surveys/Plats
 FILENAME: Replat-06
 TAB: Phase 7-02
 DRAWN: MPS

VILLAGE AT ASHTON PLACE
 CONDOMINIUM RE-FILE
 PHASE 7
 PART OF ORIGINAL RIDGEVILLE TOWNSHIP LOT 38
 CITY OF NORTH RIDGEVILLE - LORAIN COUNTY - OHIO



POLARIS ENGINEERING & SURVEYING, INC.
 34600 CHARDON ROAD - SUITE D
 WILLOUGHBY HILLS, OHIO
 44094 (440) 944-4433 (440) 944-3722 (Fax)
 www.polaris-es.com

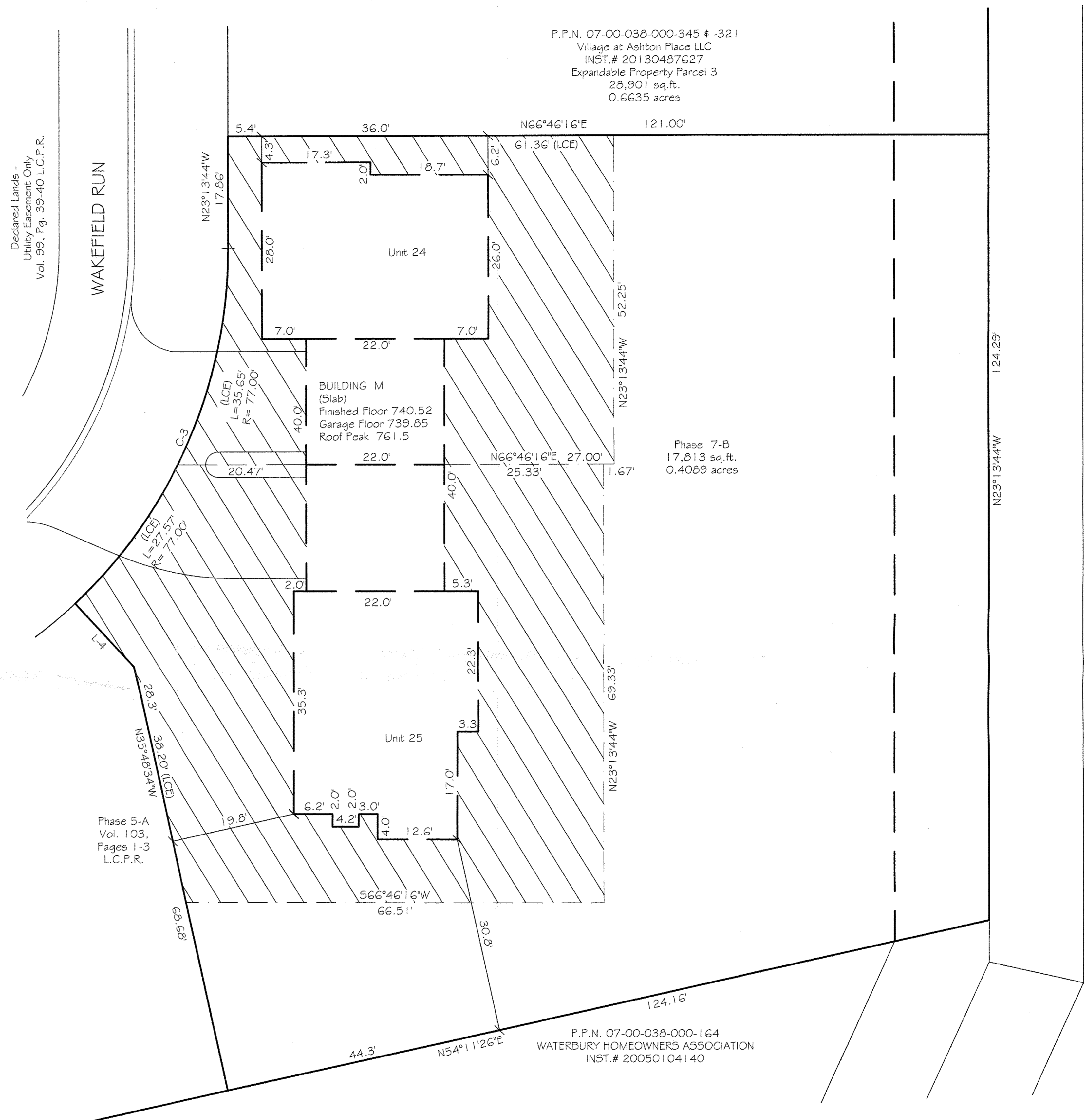
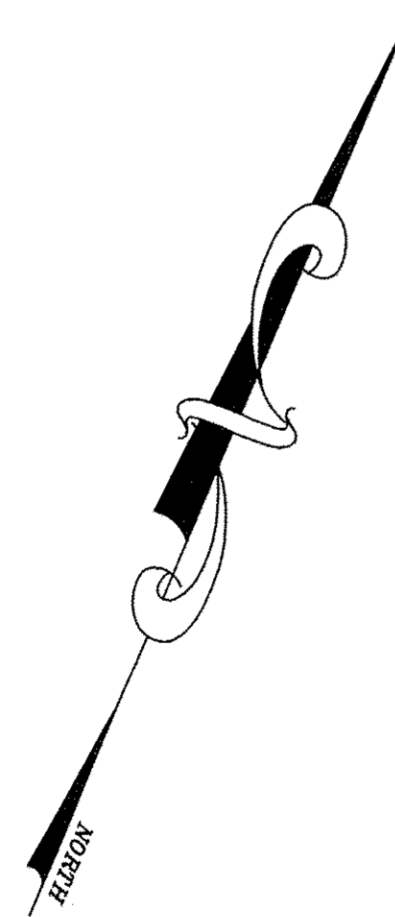
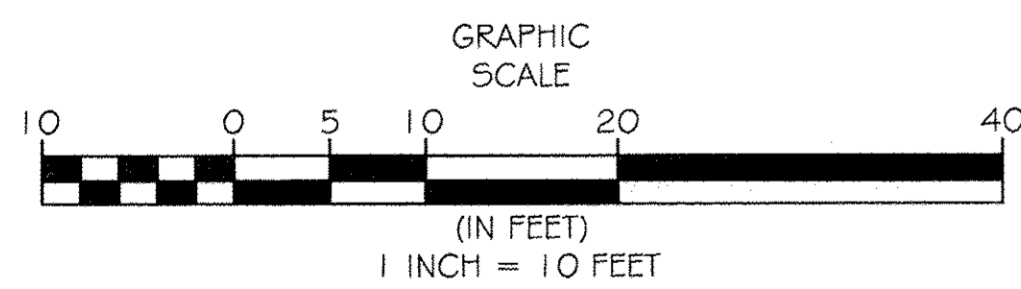
PHASE 7
 VILLAGE AT ASHTON PLACE
 CONDOMINIUM
 AS RE-ESTABLISHED

CONTRACT No.	
14262	
SHEET	OF
02	03

SIXTH AMENDMENT TO DECLARATION OF RE-ESTABLISHED CONDOMINIUM
 THE VILLAGE AT ASHTON PLACE CONDOMINIUM RE-FILE
 BEING A VACATION OF VILLAGE AT ASHTON PLACE CONDOMINIUM
 AMENDMENT 1 VOLUME 88 PAGES 40-48
 AMENDMENT 2 VOLUME 89 PAGES 11-17
 AMENDMENT 3 VOLUME 90 PAGES 02-05
 AND AMENDMENT 4 VOLUME 90 PAGES 34-37
 LORAIN COUNTY PLAT RECORDS
 AND RE-ESTABLISHMENT OF CONDOMINIUM
 IN ORIGINAL RIDGEVILLE TOWNSHIP LOT NUMBER 38,
 NOW IN THE CITY OF NORTH RIDGEVILLE - LORAIN COUNTY
 - STATE OF OHIO
 AUGUST, 2017
 SCALE: 1 INCH = 10 FEET

CURVE TABLE						
CURVE	LENGTH	RADIUS	TANGENT	CHORD	BEARING	DELTA
C-3	63.22	77.00	33.52	61.46	N00°17'36"E	47°02'40"

 = LIMITED COMMON ELEMENTS



P.P.N. 07-00-038-000-345 & -321
 Village at Ashton Place LLC
 INST.# 20130487627
 Expandable Property Parcel 3
 28,901 sq.ft.
 0.6635 acres

Phase 7-B
 17,813 sq.ft.
 0.4089 acres

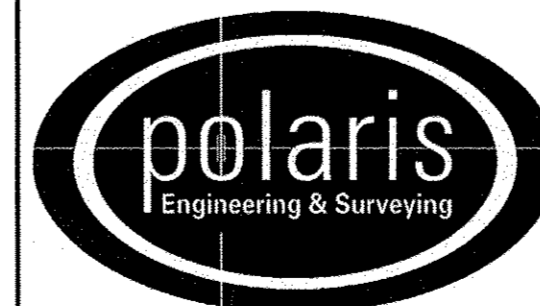
Phase 5-A
 Vol. 103,
 Pages 1-3
 L.C.P.R.

P.P.N. 07-00-038-000-164
 WATERBURY HOMEOWNERS ASSOCIATION
 INST.# 20050104140

REV. No.	DATE	BY	CHKD

DATE: 08/21/2017
 SCALE: HOR. 1"=10'
 VERT. 1"=0'
 FOLDER: Surveys/Plats
 FILENAME: Replat-06
 TAB: Phase 7-03
 DRAWN: MPS

VILLAGE AT ASHTON PLACE
 CONDOMINIUM RE-FILE
 PHASE 7
 PART OF ORIGINAL RIDGEVILLE TOWNSHIP LOT 38
 CITY OF NORTH RIDGEVILLE - LORAIN COUNTY - OHIO



POLARIS ENGINEERING & SURVEYING, INC.
 34600 CHARDON ROAD - SUITE D
 WILLOUGHBY HILLS, OHIO
 44094 (440) 944-4433 (440) 944-3722 (Fax)
 www.polaris-es.com

PHASE 7
 VILLAGE AT ASHTON PLACE
 CONDOMINIUM
 AS RE-ESTABLISHED

CONTRACT No.	
14262	
SHEET	OF
03	03