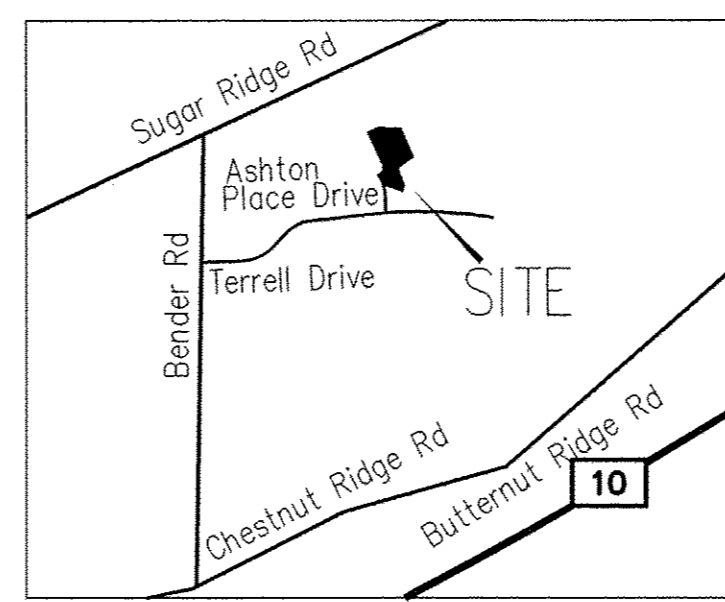
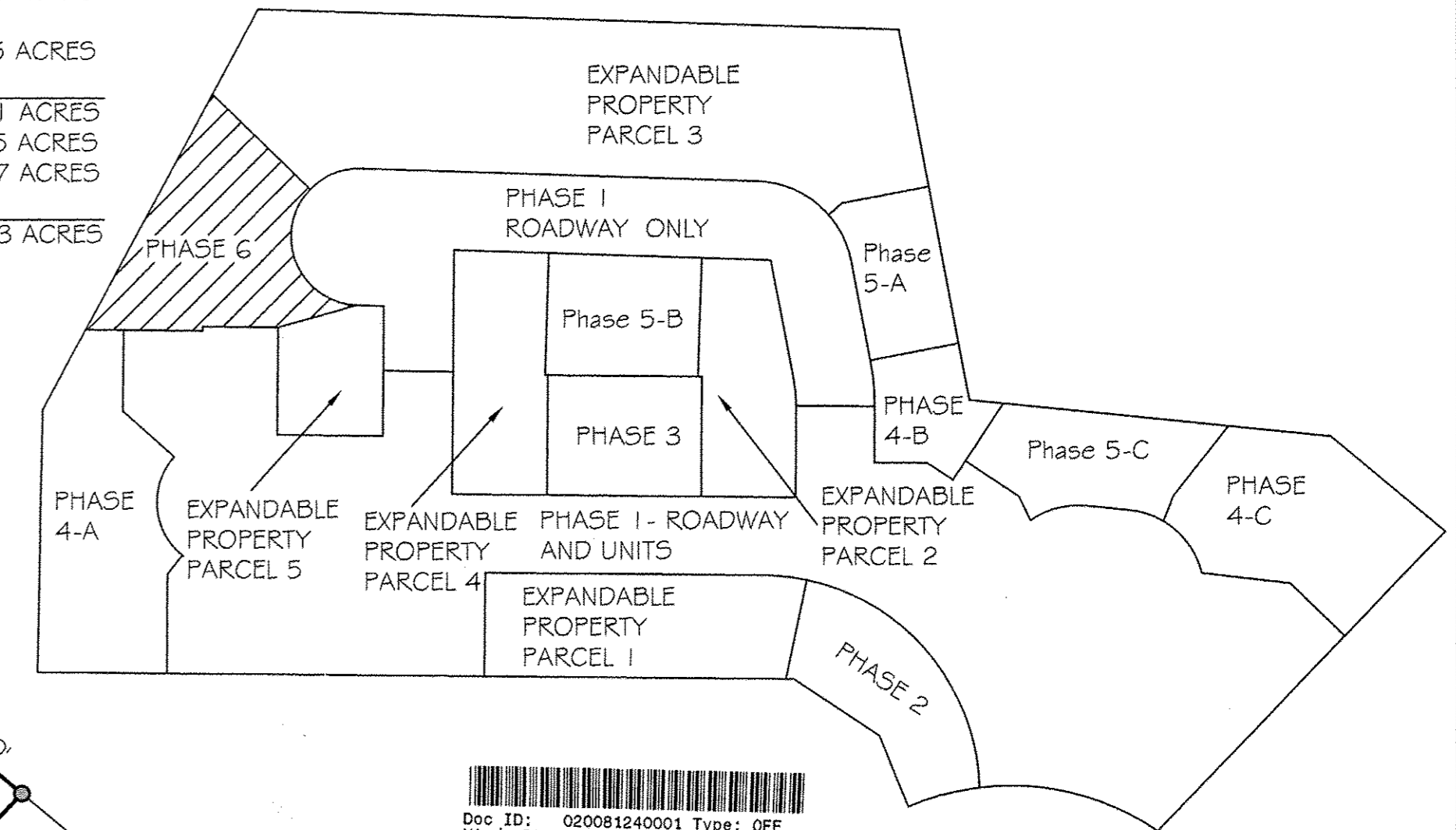


FIFTH AMENDMENT TO DECLARATION OF RE-ESTABLISHED CONDOMINIUM
 THE VILLAGE AT ASHTON PLACE CONDOMINIUM RE-FILE
 BEING A VACATION OF VILLAGE AT ASHTON PLACE CONDOMINIUM
 AMENDMENT 1 VOLUME 88 PAGES 40-48
 AMENDMENT 2 VOLUME 89 PAGES 11-17
 AMENDMENT 3 VOLUME 90 PAGES 02-05
 AND AMENDMENT 4 VOLUME 90 PAGES 34-37 LORAIN COUNTY PLAT RECORDS
 IN ORIGINAL RIDGEVILLE TOWNSHIP LOT NUMBER 38,
 NOW IN THE CITY OF NORTH RIDGEVILLE - LORAIN COUNTY - STATE OF OHIO
 JUNE, 2017
 SCALE: 1 INCH = 50 FEET



ACREAGE BREAKDOWN:

ACREAGE OF UNITS	0.0936 ACRES
ACREAGE OF COMMON ELEMENTS OUTSIDE OF BUILDINGS (NOT INCLUDING COMMON ELEMENTS UNDER BUILDINGS)	0.3555 ACRES
LAND DECLARED PHASE 6	0.4491 ACRES
PHASES 1-5	6.6305 ACRES
EXPANDABLE PROPERTY	2.7237 ACRES
TOTAL	9.8033 ACRES



Doc ID: 020081240001 Type: OFF
 Kind: PLAT
 Recorded: 07/12/2017 at 01:52:18 PM
 Fee Amt: \$176.80 Page 1 of 1
 Lorain County, Ohio
 Judith M. Madwick County Recorder
File 2017-0636386

TRANSFERRED
 IN COMPLIANCE WITH SEC. 319-202
 OHIO REV. CODE
 JUL 12 2017
 J. CRAIG SHODGRASS, CPA, CGFM
 LORAIN COUNTY AUDITOR

FIDELITY NATIONAL TITLE
 COMPANY, LLC
 5340 MEADOW LANE
 SHEFFIELD VILLAGE, OH 44054
 Plat vol. 103
 Pgs. 70 + 71

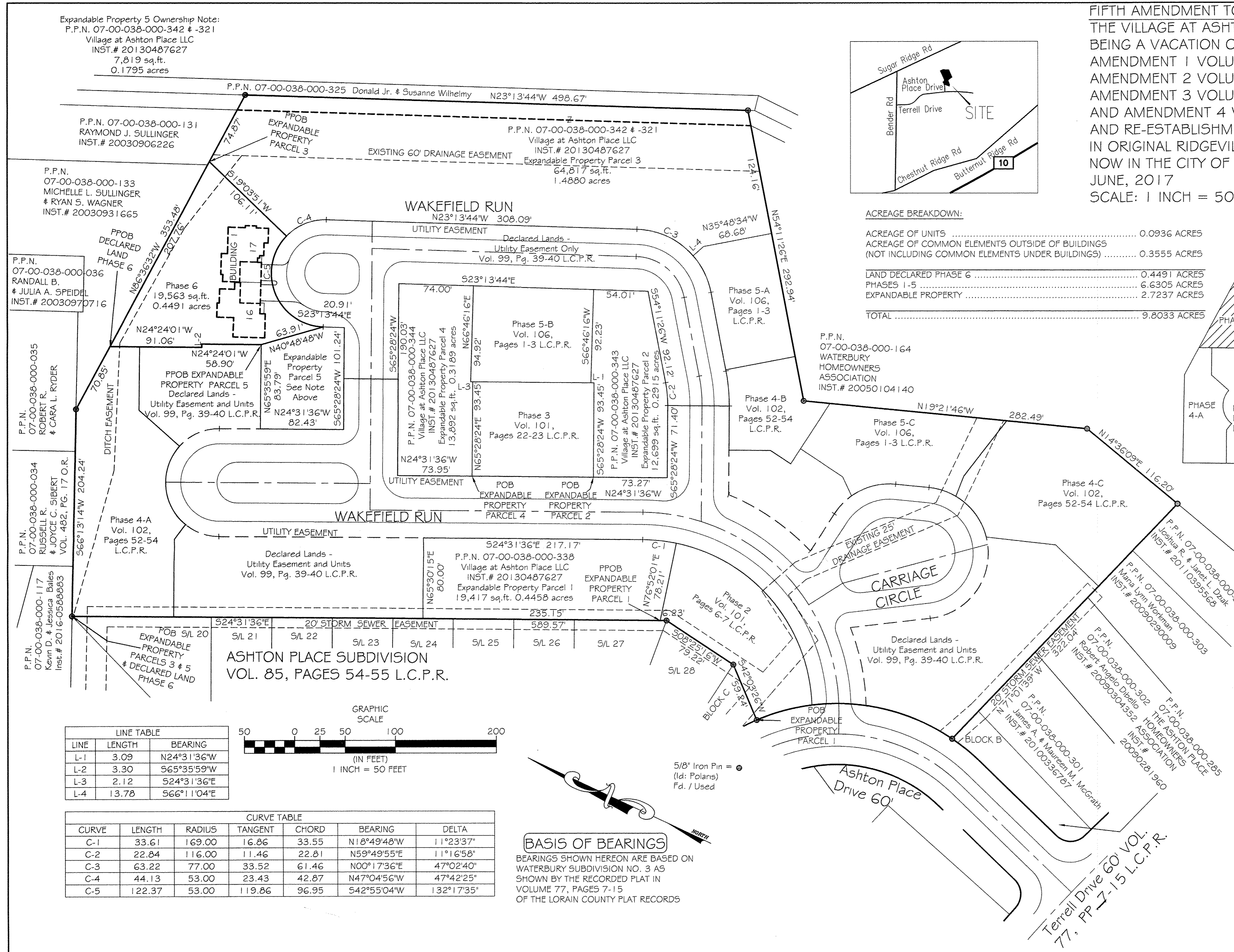
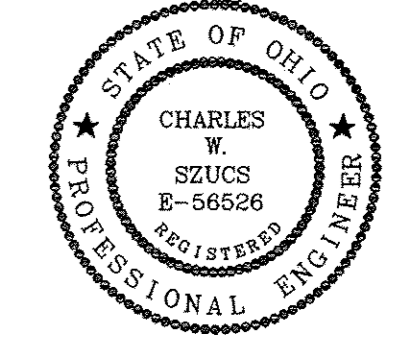
I HEREBY CERTIFY TO THE FOLLOWING: THAT THE LOCATIONS OF
 THE BUILDING FOUNDATIONS SHOWN BY THICK LINES AND
 DIMENSIONS, AND THEIR FINISHED FLOOR ELEVATIONS ARE
 ACCURATELY SHOWN FROM A FIELD SURVEY MADE UNDER MY
 DIRECT SUPERVISION, AND WERE ACTUALLY CONSTRUCTED.

Michael P. Spellacy 4/27/2017
 MICHAEL P. SPELLACY P.S. #5169 06/27/2017
 DATE

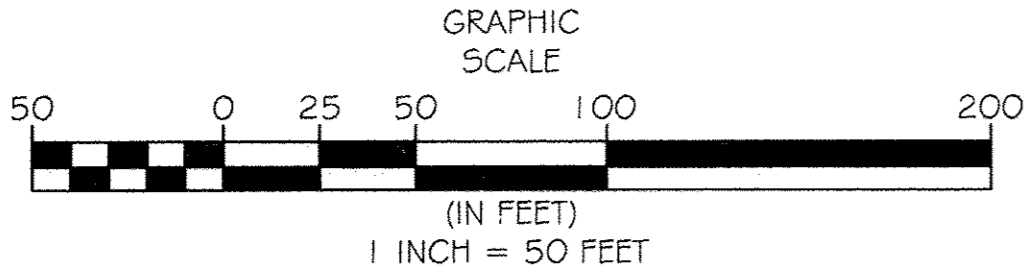


I HEREBY CERTIFY THAT THESE DRAWINGS ACCURATELY SHOW
 EACH BUILDING AS BUILT OR CONSTRUCTED.

Charles W. Szucs 06-27-17
 CHARLES W. SZUCS, P.E. #56526 06/27/2017
 DATE



ASHTON PLACE SUBDIVISION
 VOL. 85, PAGES 54-55 L.C.P.R.



LINE TABLE

LINE	LENGTH	BEARING
L-1	3.09	N24°31'36"W
L-2	3.30	S65°35'59"W
L-3	2.12	S24°31'36"E
L-4	13.78	S66°11'04"E

CURVE TABLE

CURVE	LENGTH	RADIUS	TANGENT	CHORD	BEARING	DELTA
C-1	33.61	169.00	16.86	33.55	N18°49'48"W	11°23'37"
C-2	22.84	116.00	11.46	22.81	S59°49'55"E	11°16'58"
C-3	63.22	77.00	33.52	61.46	N00°17'36"E	47°02'40"
C-4	44.13	53.00	23.43	42.87	N47°04'56"W	47°42'25"
C-5	122.37	53.00	119.86	96.95	S42°55'04"W	132°17'35"

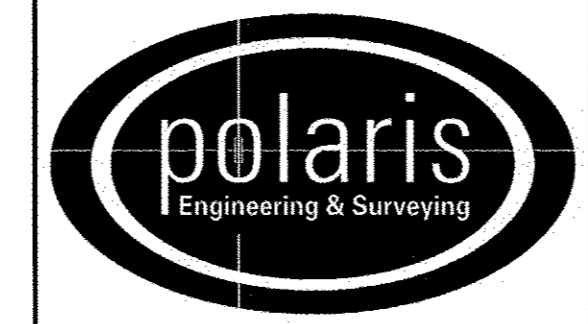
BASIS OF BEARINGS
 BEARINGS SHOWN HEREON ARE BASED ON
 WATERBURY SUBDIVISION NO. 3 AS
 SHOWN BY THE RECORDED PLAT IN
 VOLUME 77, PAGES 7-15
 OF THE LORAIN COUNTY PLAT RECORDS

REV. No.	DATE	BY	CHK'D

DATE: 06/27/2017
 SCALE: HOR. 1"=50'
 VERT. 1"=0'
 FOLDER: Surveys/Plats
 FILENAME: Replat-05
 TAB: Phase 6-01
 DRAWN: MPS

**VILLAGE AT ASHTON PLACE
 CONDOMINIUM RE-FILE
 PHASE 6**

PART OF ORIGINAL RIDGEVILLE TOWNSHIP LOT 38
 CITY OF NORTH RIDGEVILLE - LORAIN COUNTY - OHIO



POLARIS ENGINEERING & SURVEYING, INC.
 34600 CHARDON ROAD - SUITE D
 WILLOUGHBY HILLS, OHIO
 44094 (440) 944-4433 (440) 944-3722 (Fax)
 www.polaris-es.com

**PHASE 6
 VILLAGE AT ASHTON PLACE
 CONDOMINIUM
 AS RE-ESTABLISHED**

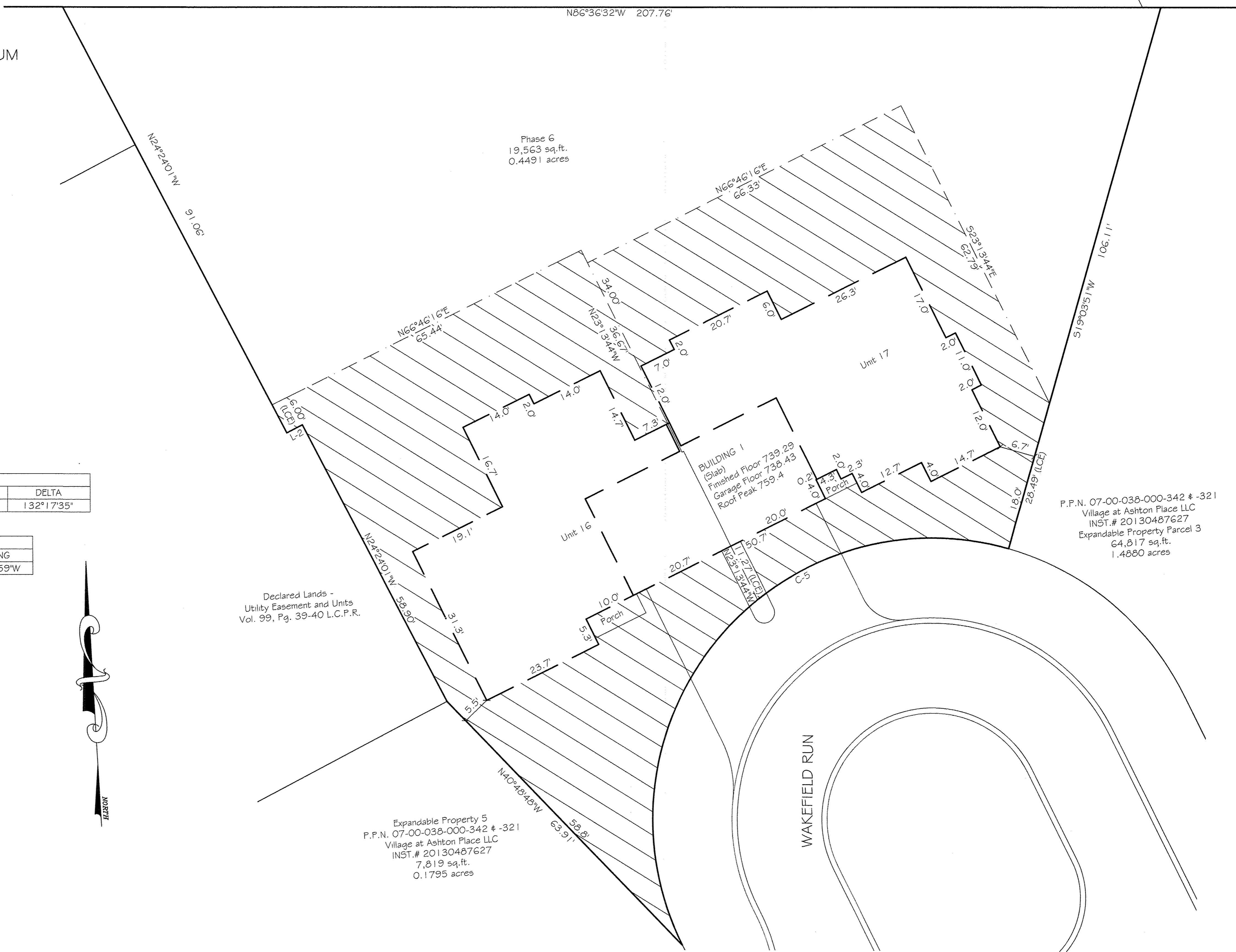
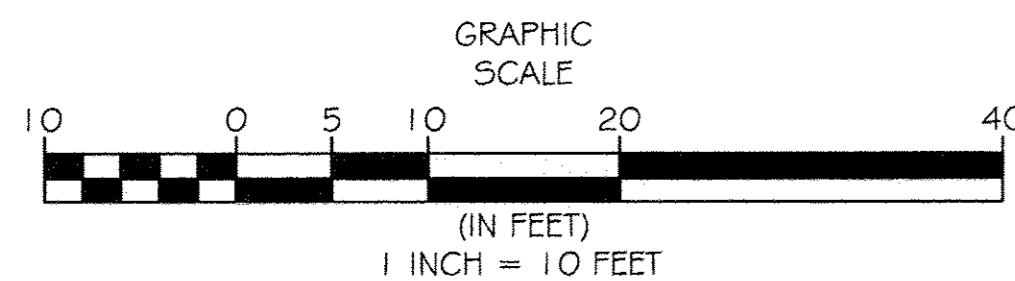
CONTRACT No.	
14262	
SHEET	OF
01	02

FIFTH AMENDMENT TO DECLARATION OF
 RE-ESTABLISHED CONDOMINIUM
 THE VILLAGE AT ASHTON PLACE CONDOMINIUM RE-FILE
 BEING A VACATION OF VILLAGE AT ASHTON PLACE CONDOMINIUM
 AMENDMENT 1 VOLUME 88 PAGES 40-48
 AMENDMENT 2 VOLUME 89 PAGES 11-17
 AMENDMENT 3 VOLUME 90 PAGES 02-05
 AND AMENDMENT 4 VOLUME 90 PAGES 34-37
 LORAIN COUNTY PLAT RECORDS
 AND RE-ESTABLISHMENT OF CONDOMINIUM
 IN ORIGINAL RIDGEVILLE TOWNSHIP LOT NUMBER 38,
 NOW IN THE CITY OF NORTH RIDGEVILLE - LORAIN COUNTY
 - STATE OF OHIO
 JUNE, 2017
 SCALE: 1 INCH = 10 FEET

CURVE TABLE						
CURVE	LENGTH	RADIUS	TANGENT	CHORD	BEARING	DELTA
C-5	122.37	53.00	119.86	96.95	S42°55'04"W	132°17'35"

LINE TABLE		
LINE	LENGTH	BEARING
L-2	3.30	S65°35'59"W

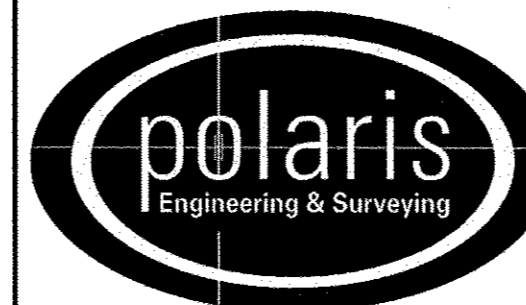
 = LIMITED COMMON ELEMENTS



REV. No.	DATE	BY	CHK'D

DATE: 06/27/2017
 SCALE: HOR. 1"=50'
 VERT. 1"=0'
 FOLDER: Surveys/Plats
 FILENAME: Replat-Q5
 TAB: Phase 6-01
 DRAWN: MPS

VILLAGE AT ASHTON PLACE
 CONDOMINIUM RE-FILE
 PHASE 6
 PART OF ORIGINAL RIDGEVILLE TOWNSHIP LOT 38
 CITY OF NORTH RIDGEVILLE - LORAIN COUNTY - OHIO



POLARIS ENGINEERING & SURVEYING, INC.
 34600 CHARDON ROAD - SUITE D
 WILLOUGHBY HILLS, OHIO
 44094 (440) 944-4433 (440) 944-3722 (Fax)
 www.polars-es.com

PHASE 6
 VILLAGE AT ASHTON PLACE
 CONDOMINIUM
 AS RE-ESTABLISHED

CONTRACT No.	
14262	
SHEET	OF
02	02