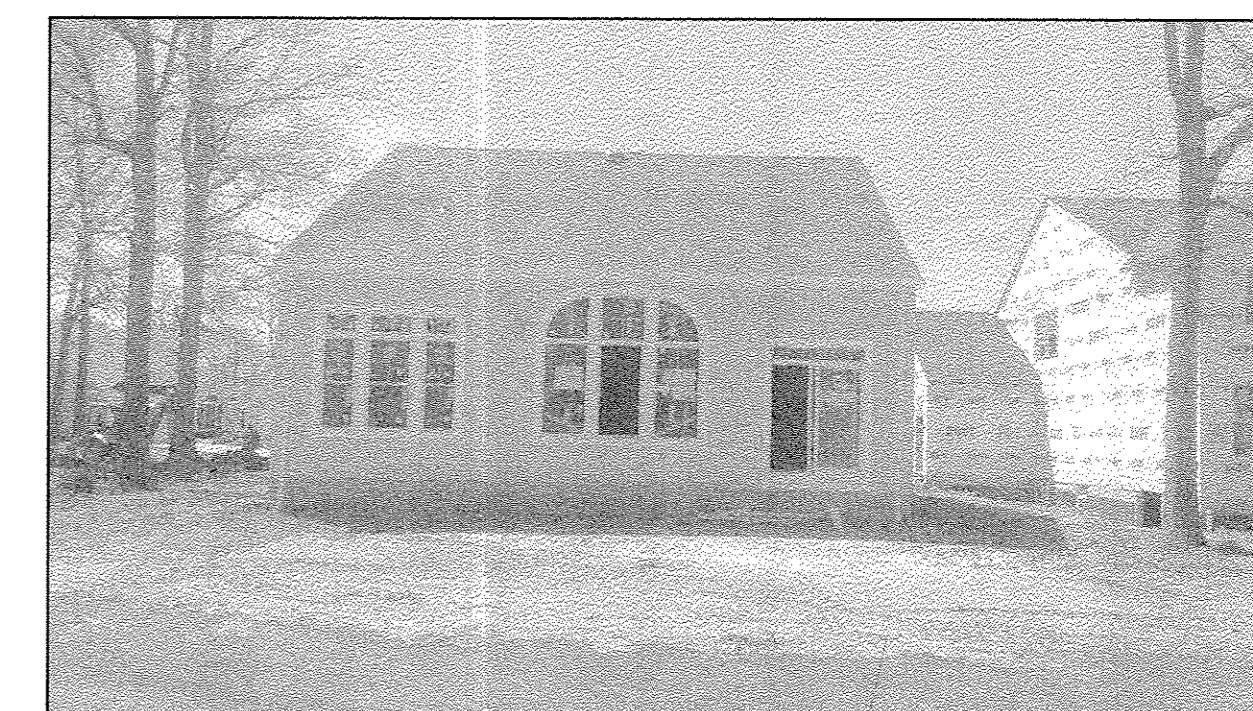


**UNIT #46 FRONT VIEW**



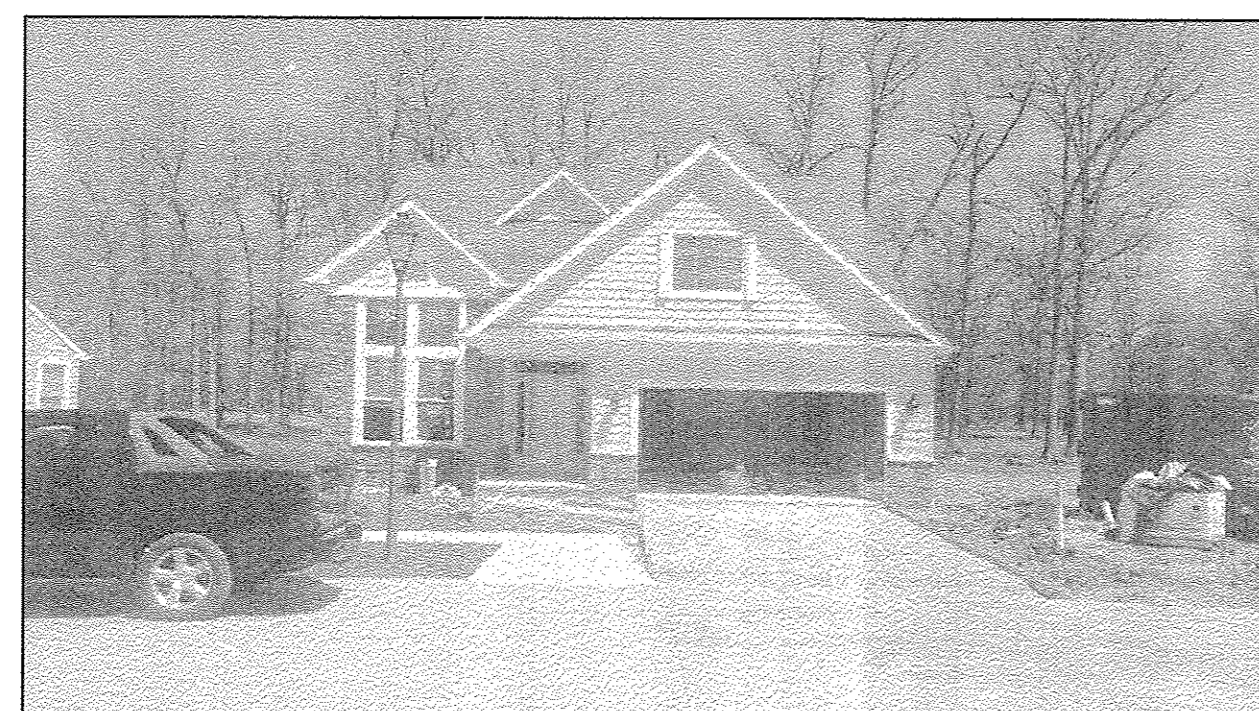
**UNIT #47 FRONT VIEW**



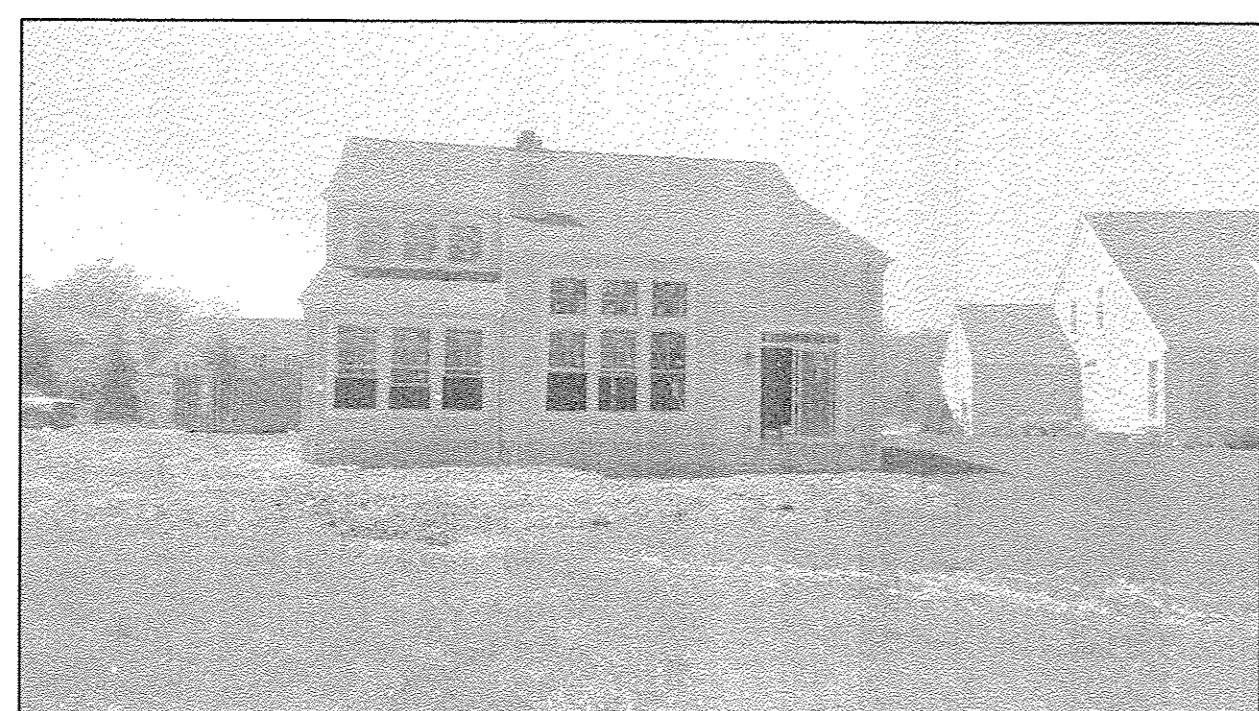
**UNIT #47 REAR VIEW**



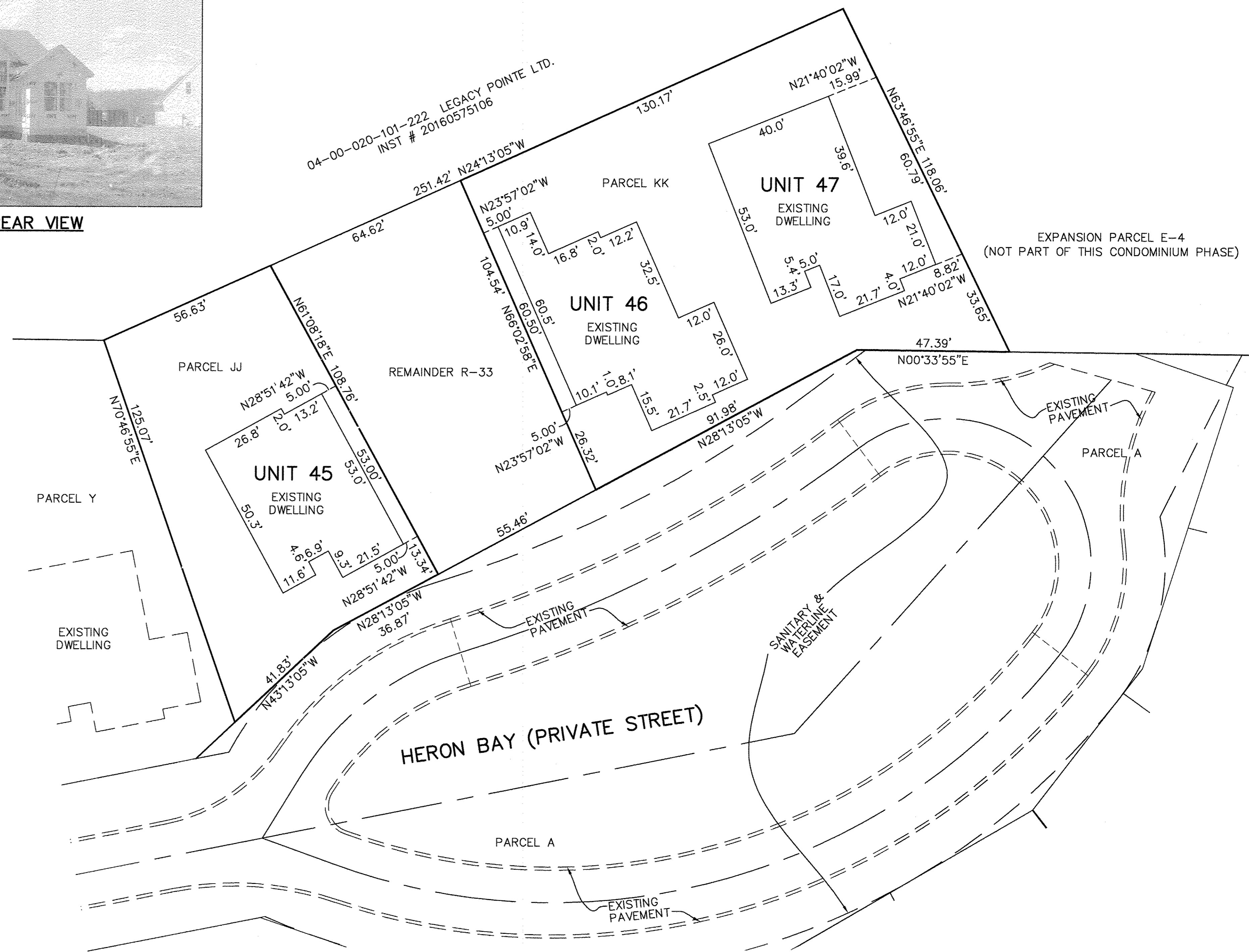
**UNIT #46 REAR VIEW**



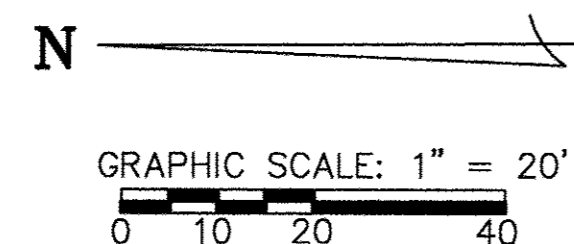
**UNIT #45 FRONT VIEW**



**UNIT #45 REAR VIEW**



NOTES:  
LIMITED COMMON AREAS INCLUDE THE LAND WITHIN 3 FEET FROM THE FOUNDATION AND PATIOS/DECKS/PORCHES/SUNROOMS OF EACH UNIT.  
ALL ANGLES BETWEEN WALLS ARE 90° UNLESS OTHERWISE SPECIFIED



REVISIONS		

**LEGACY POINTE  
CONDOMINIUM NO. 6 PH 15**  
BEING PART OF BLOCK "P" IN THE LEGACY POINTE SUBDIVISION NO. 5 AS RECORDED IN VOL. 92 OF PLATS, PGS. 27-30 OF LORAIN COUNTY RECORDS, OF PART OF ORIGINAL AVON TWP. SECTION 17 AND PART OF ORIGINAL AVON TWP. SECTION 20 CITY OF AVON LAKE, COUNTY OF LORAIN, OHIO

**THE HENRY G. REITZ  
ENGINEERING COMPANY**  
4214 ROCKY RIVER DRIVE  
CLEVELAND, OHIO 44135  
PHONE: (216) 251-3033

2/2  
APRIL 2017