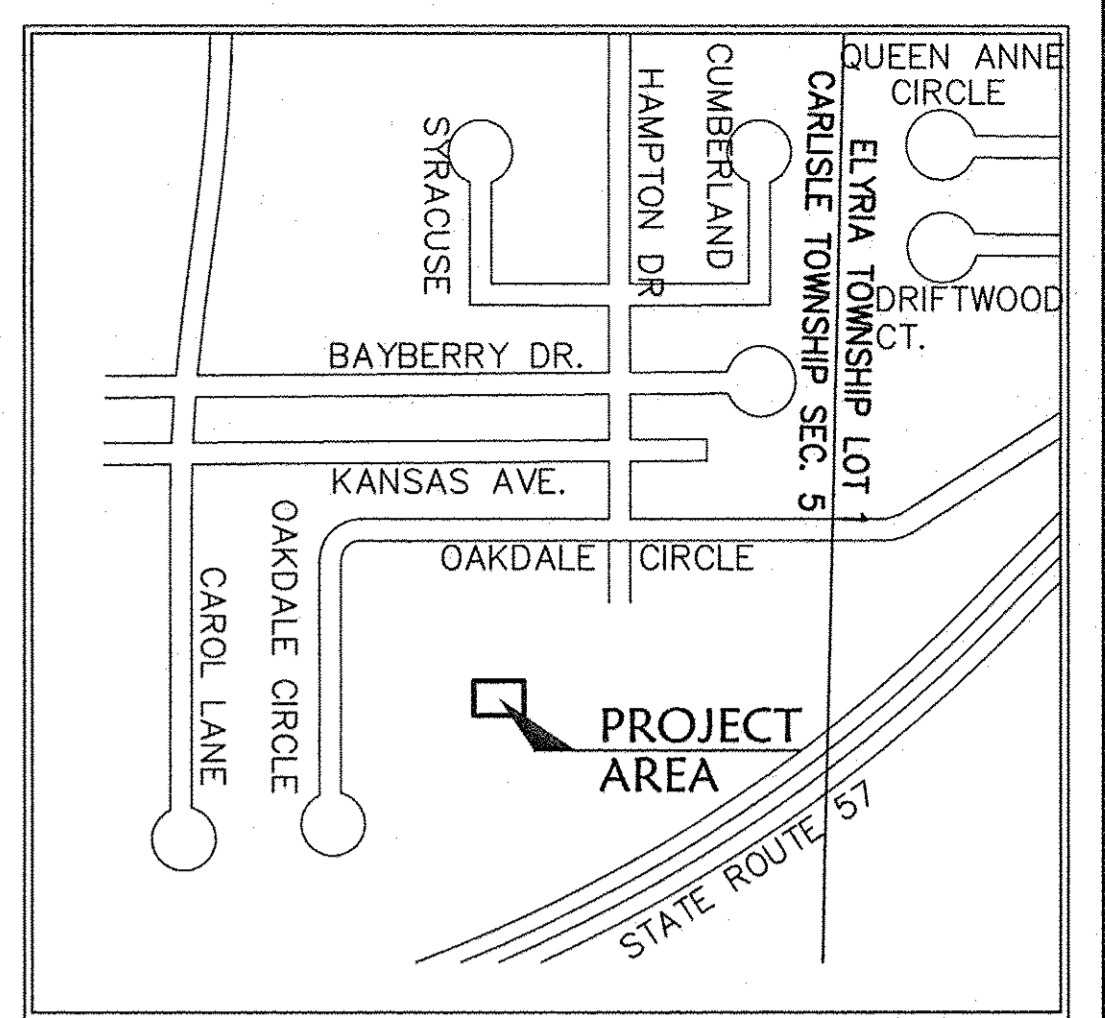
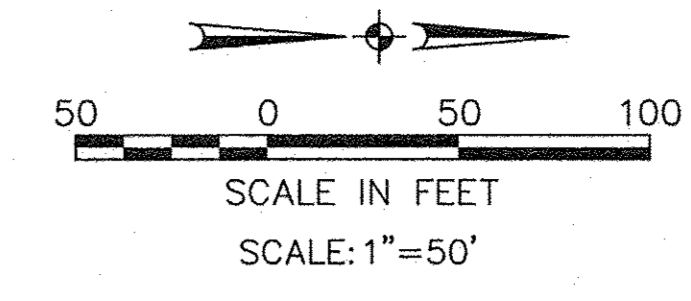
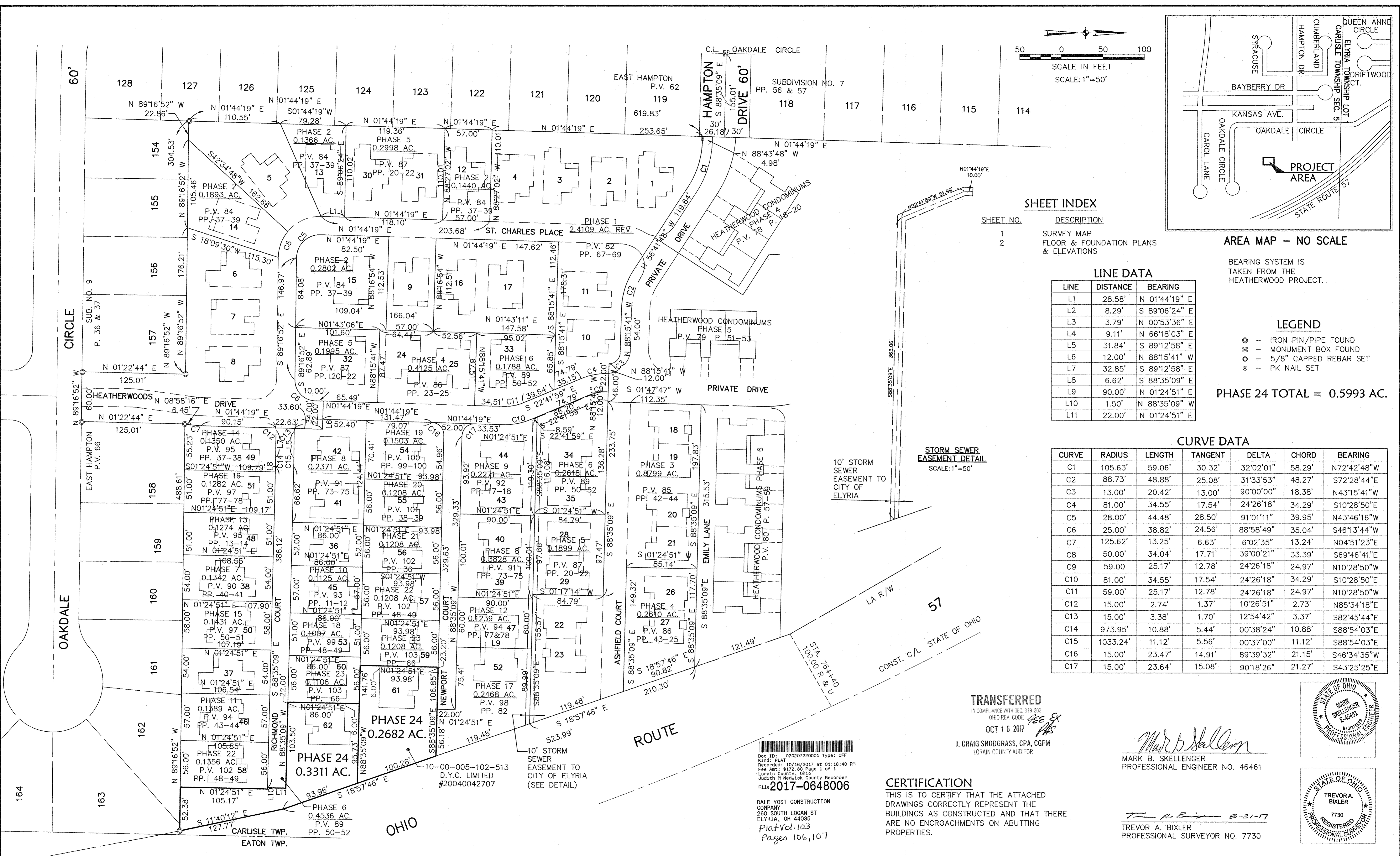


R:\04000\04142-CP24\CIVIL 3D 2014\124-PLA101.dwg 8/21/2017 1:06:27 PM



**SHEET INDEX**

SHEET NO.	DESCRIPTION
1	SURVEY MAP
2	FLOOR & FOUNDATION PLANS & ELEVATIONS

**LINE DATA**

LINE	DISTANCE	BEARING
L1	28.58'	N 01°44'19" E
L2	8.29'	S 89°06'24" E
L3	3.79'	N 00°53'36" E
L4	9.11'	N 66°18'03" E
L5	31.84'	S 89°12'58" E
L6	12.00'	N 88°15'41" W
L7	32.85'	S 89°12'58" E
L8	6.62'	S 88°35'09" E
L9	90.00'	N 01°24'51" E
L10	1.50'	N 88°35'09" W
L11	22.00'	N 01°24'51" E

**AREA MAP - NO SCALE**

BEARING SYSTEM IS TAKEN FROM THE HEATHERWOOD PROJECT.

- LEGEND**
- ⊙ - IRON PIN/PIPE FOUND
  - ⊙ - MONUMENT BOX FOUND
  - ⊙ - 5/8" CAPPED REBAR SET
  - ⊙ - PK NAIL SET

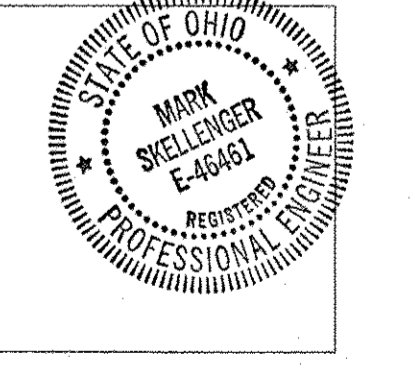
PHASE 24 TOTAL = 0.5993 AC.

**CURVE DATA**

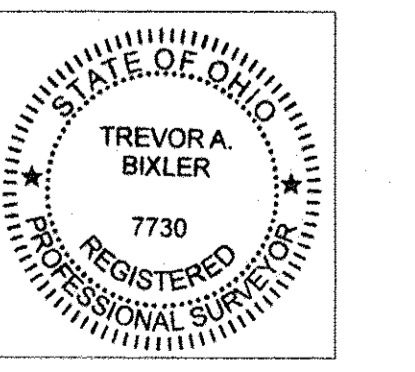
CURVE	RADIUS	LENGTH	TANGENT	DELTA	CHORD	BEARING
C1	105.63'	59.06'	30.32'	32°02'01"	58.29'	N72°42'48"W
C2	88.73'	48.88'	25.08'	31°33'53"	48.27'	S72°28'44"E
C3	13.00'	20.42'	13.00'	90°00'00"	18.38'	N43°15'41"W
C4	81.00'	34.55'	17.54'	24°26'18"	34.29'	S10°28'50"E
C5	28.00'	44.48'	28.50'	91°01'11"	39.95'	N43°46'16"W
C6	25.00'	38.82'	24.56'	88°58'49"	35.04'	S46°13'44"W
C7	125.62'	13.25'	6.63'	6°02'35"	13.24'	N04°51'23"E
C8	50.00'	34.04'	17.71'	39°00'21"	33.39'	S69°46'41"E
C9	59.00'	25.17'	12.78'	24°26'18"	24.97'	N10°28'50"W
C10	81.00'	34.55'	17.54'	24°26'18"	34.29'	S10°28'50"E
C11	59.00'	25.17'	12.78'	24°26'18"	24.97'	N10°28'50"W
C12	15.00'	2.74'	1.37'	10°26'51"	2.73'	N85°34'18"E
C13	15.00'	3.38'	1.70'	12°54'42"	3.37'	S82°45'44"E
C14	973.95'	10.88'	5.44'	00°38'24"	10.88'	S88°54'03"E
C15	1033.24'	11.12'	5.56'	00°37'00"	11.12'	S88°54'03"E
C16	15.00'	23.47'	14.91'	89°39'32"	21.15'	S46°34'35"W
C17	15.00'	23.64'	15.08'	90°18'26"	21.27'	S43°25'25"E

**STORM SEWER EASEMENT DETAIL**  
SCALE: 1"=50'

**TRANSFERRED**  
IN COMPLIANCE WITH SEC. 319-202  
OHIO REV. CODE  
OCT 16 2017  
J. CRAIG SNODGRASS, CPA, CGFM  
LORAIN COUNTY AUDITOR



*Mark B. Skellenger*  
MARK B. SKELLENGER  
PROFESSIONAL ENGINEER NO. 46461



*Trevor A. Bixler*  
TREVOR A. BIXLER  
PROFESSIONAL SURVEYOR NO. 7730

Doc ID: 02020720001 Type: OFF  
Kind: PLAT  
Recorded: 10/16/2017 at 01:18:40 PM  
Fee Amt: \$172.80 Page 1 of 1  
Lorain County, Ohio  
Judith H. Nedwick County Recorder  
File: 2017-0648006

DALE YOST CONSTRUCTION COMPANY  
280 SOUTH LOGAN ST  
ELYRIA, OH 44035  
Plat Vol. 103  
Pages 106, 107

**CERTIFICATION**  
THIS IS TO CERTIFY THAT THE ATTACHED DRAWINGS CORRECTLY REPRESENT THE BUILDINGS AS CONSTRUCTED AND THAT THERE ARE NO ENCROACHMENTS ON ADJUTING PROPERTIES.

DATE	DESCRIPTION	BY
8-21-17		

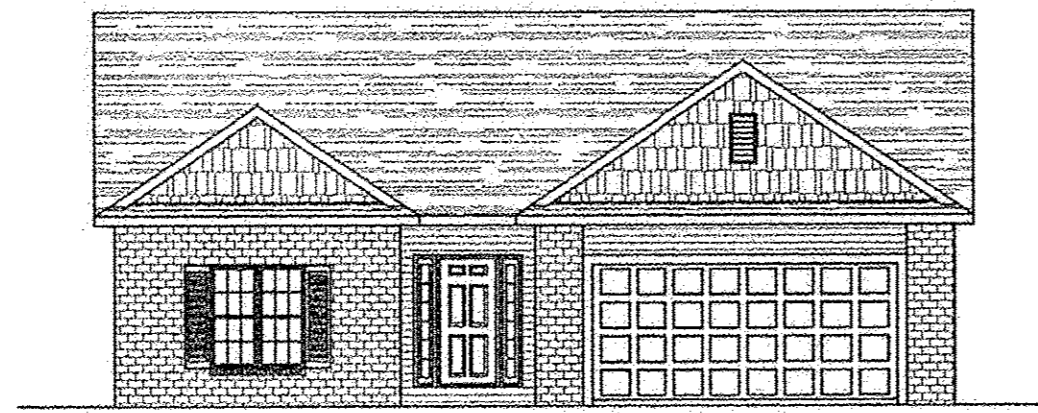
**KS ASSOCIATES**  
KS Associates, Inc.  
260 Burns Road, Suite 100  
Elyria, OH 44035  
P 440 365 4730  
F 440 365 4790  
www.ksassociates.com

**CHESAPEAKE CONDOMINIUM PHASE NO. 24**  
PART OF ORIGINAL CARLISLE TOWNSHIP SECTION NO. 5 CITY OF ELYRIA COUNTY OF LORAIN STATE OF OHIO

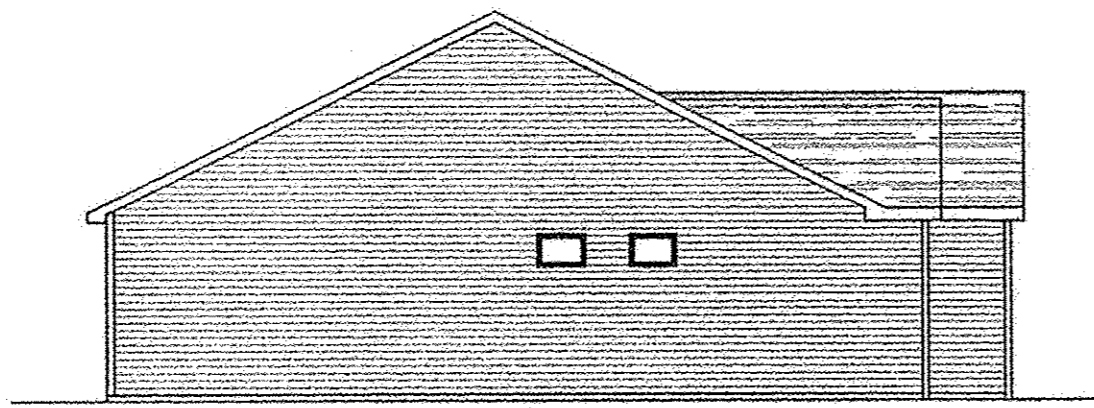
SHEET	OF	JOB NO.
1	2	04142-CP24

**OWNERSHIP PERCENTAGES**

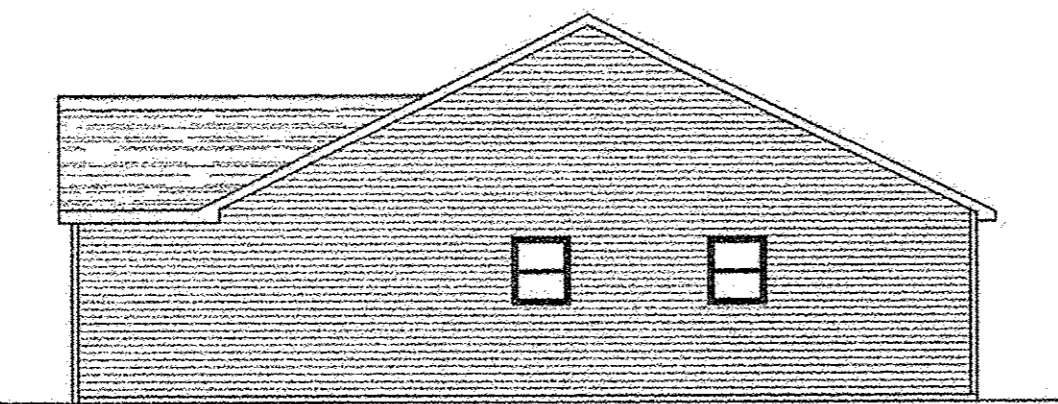
UNIT NO.	SQ. FT.	ELEV. F.F.	% OWNERSHIP
1	1427.16	748.93	1.6249%
2	1645.51	749.08	1.8736%
3	1427.16	749.45	1.6249%
4	1637.92	749.47	1.8649%
5	1427.16	749.50	1.6249%
6	1427.16	749.44	1.6249%
7	1645.51	749.42	1.8736%
8	1427.16	749.44	1.6249%
9	1645.51	749.84	1.8736%
10	1637.92	749.45	1.8649%
11	1645.51	748.48	1.8736%
12	1427.16	749.86	1.6249%
13	1645.51	749.53	1.8736%
14	1645.51	749.39	1.8736%
15	1645.51	749.89	1.8736%
16	1427.16	749.36	1.6249%
17	1645.51	749.23	1.8736%
18	1154.56	749.35	1.3146%
19	1305.39	749.35	1.4863%
20	1154.56	749.41	1.3146%
21	1154.56	749.41	1.3146%
22	1305.39	750.46	1.4863%
23	1154.56	750.46	1.3146%
24	1645.51	749.53	1.8736%
25	1207.46	749.20	1.3748%
26	1305.39	749.81	1.4863%
27	1154.56	749.81	1.3146%
28	1305.39	750.04	1.4863%
29	1305.39	750.04	1.4863%
30	1427.16	749.50	1.6249%
31	1645.51	749.70	1.8736%
32	1645.51	749.35	1.8736%
33	1645.51	749.07	1.8736%
34	1305.39	749.17	1.4863%
35	1305.39	749.17	1.4863%
36	1207.46	749.26	1.3748%
37	1427.16	749.44	1.6249%
38	1427.16	749.36	1.6249%
39	1305.39	749.84	1.4863%
40	1305.39	749.84	1.4863%
41	1645.51	749.45	1.8736%
42	1460.23	749.69	1.6626%
43	1305.39	749.38	1.4863%
44	1305.39	749.38	1.4863%
45	1474.73	749.33	1.6791%
46	1474.73	749.67	1.6791%
47	1305.39	749.98	1.4863%
48	1267.85	749.33	1.4436%
49	1267.85	749.58	1.4436%
50	1637.92	749.36	1.8649%
51	1267.85	749.38	1.4436%
52	1305.39	749.98	1.4863%
53	1267.85	749.33	1.4436%
54	1390.71	749.61	1.5834%
55	1390.71	749.59	1.5834%
56	1390.71	749.74	1.5834%
57	1390.71	749.72	1.5834%
58	1390.71	749.58	1.5834%
59	1390.71	749.83	1.5834%
60	1390.71	749.32	1.5834%
61	1390.71	749.79	1.5834%
62	1486.89	749.28	1.6929%
<b>TOTAL</b>	<b>87828.44</b>		<b>100.0000%</b>



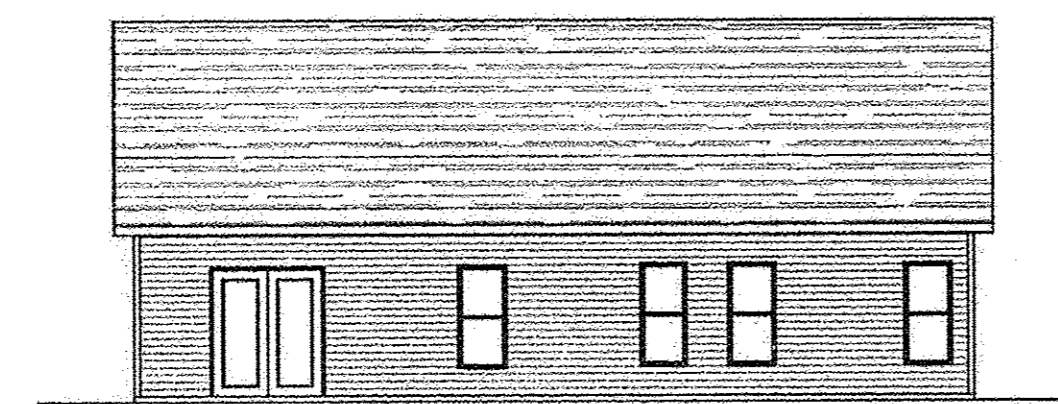
**FRONT ELEVATION**  
LANCASTER MODEL



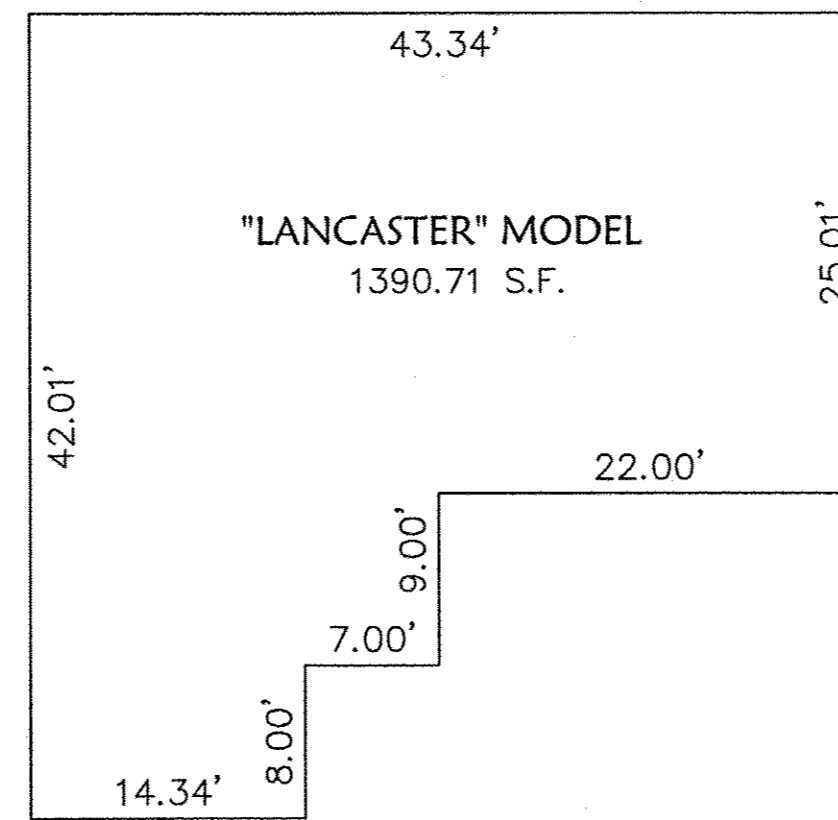
**LEFT SIDE ELEVATION**



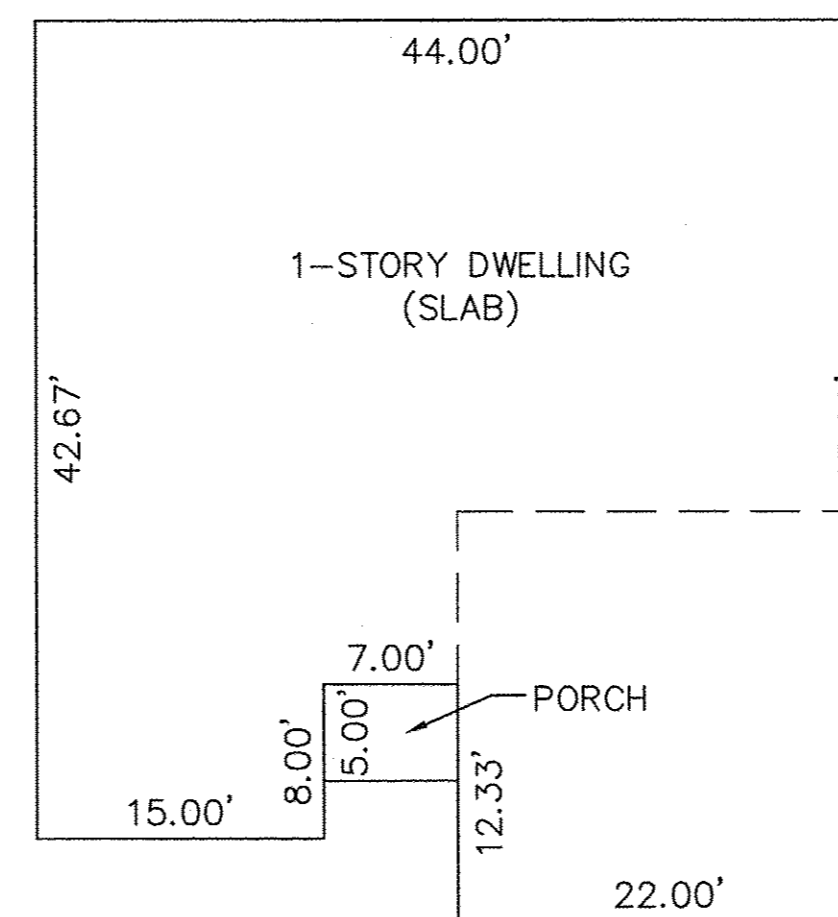
**RIGHT SIDE ELEVATION**



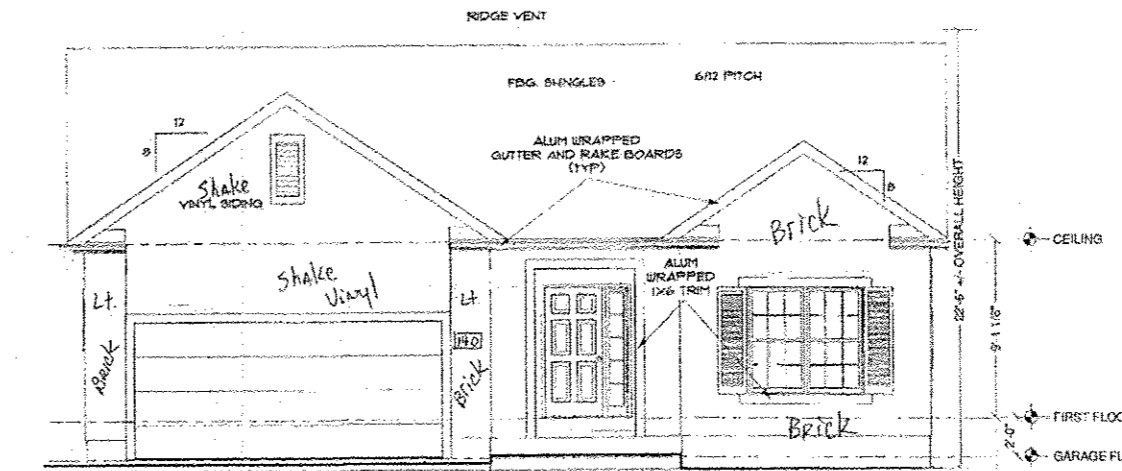
**REAR ELEVATION**



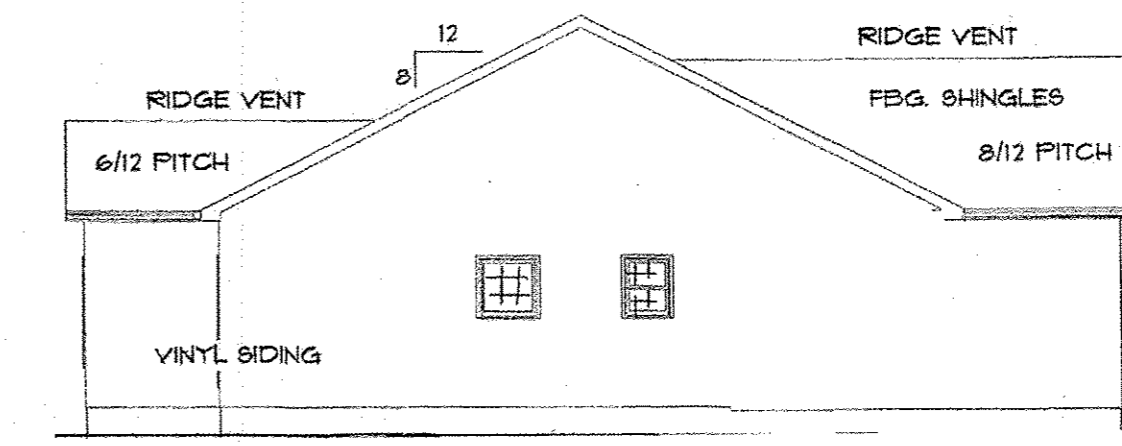
**FIRST FLOOR PLAN**  
(INTERIOR DIMENSIONS)



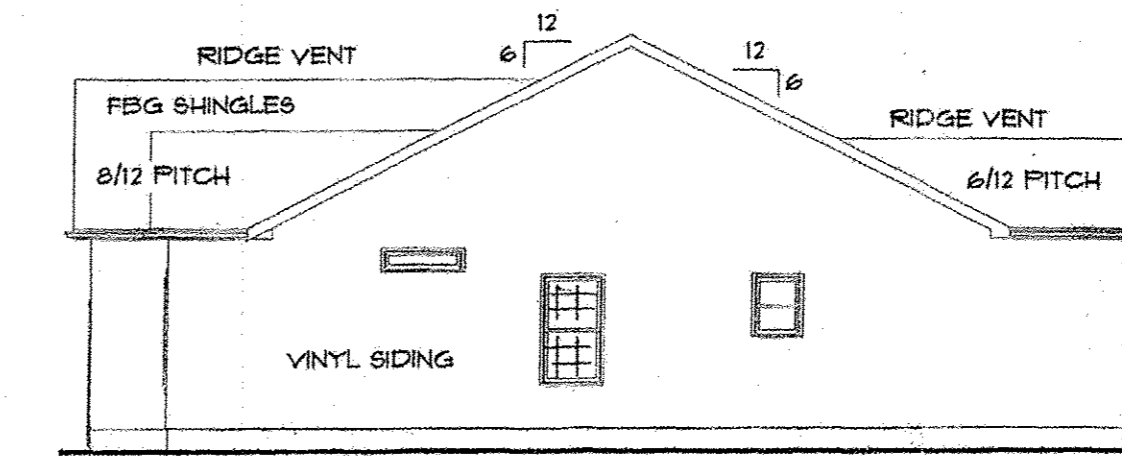
**FOUNDATION PLAN**  
(EXTERIOR DIMENSIONS)



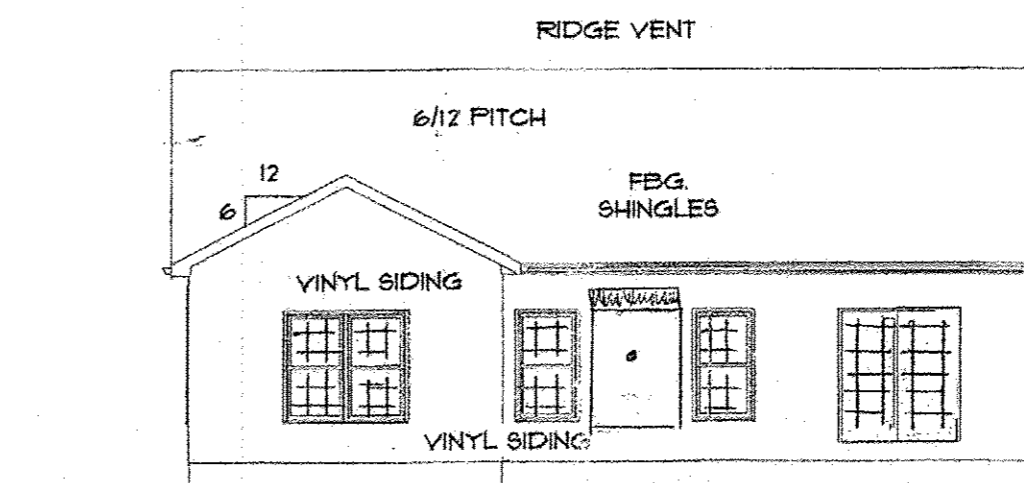
**FRONT ELEVATION**  
EAGLE MODEL



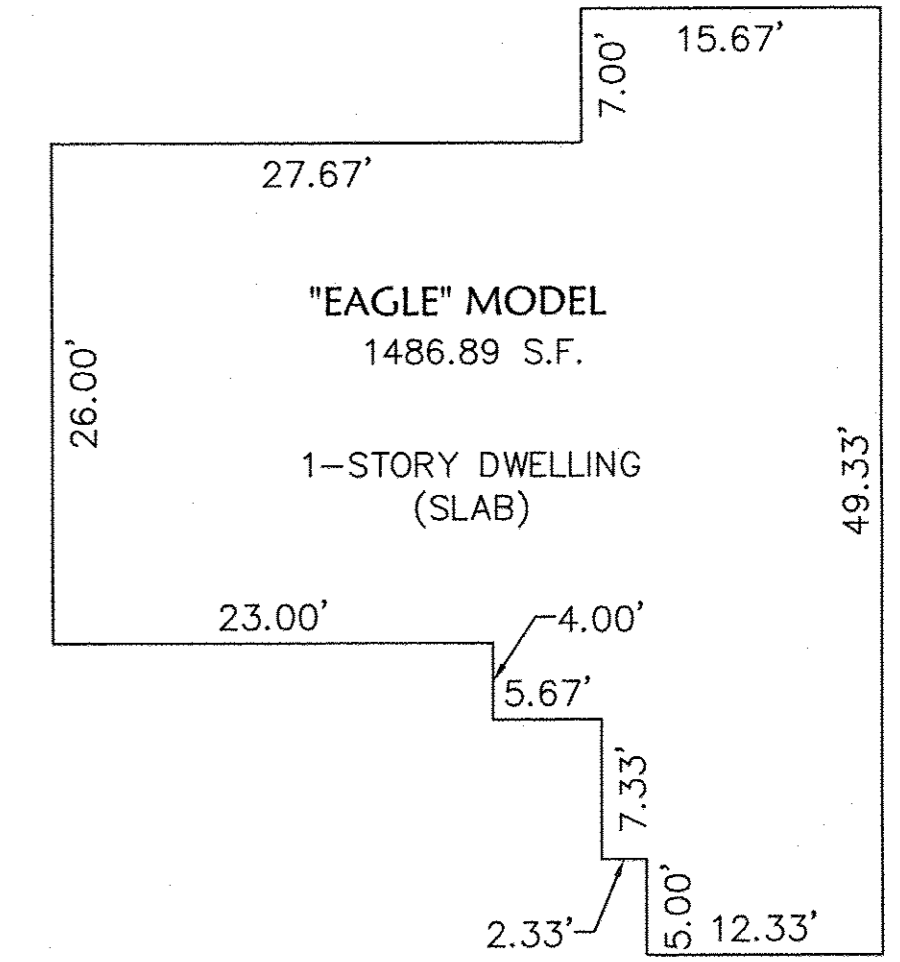
**LEFT SIDE ELEVATION**



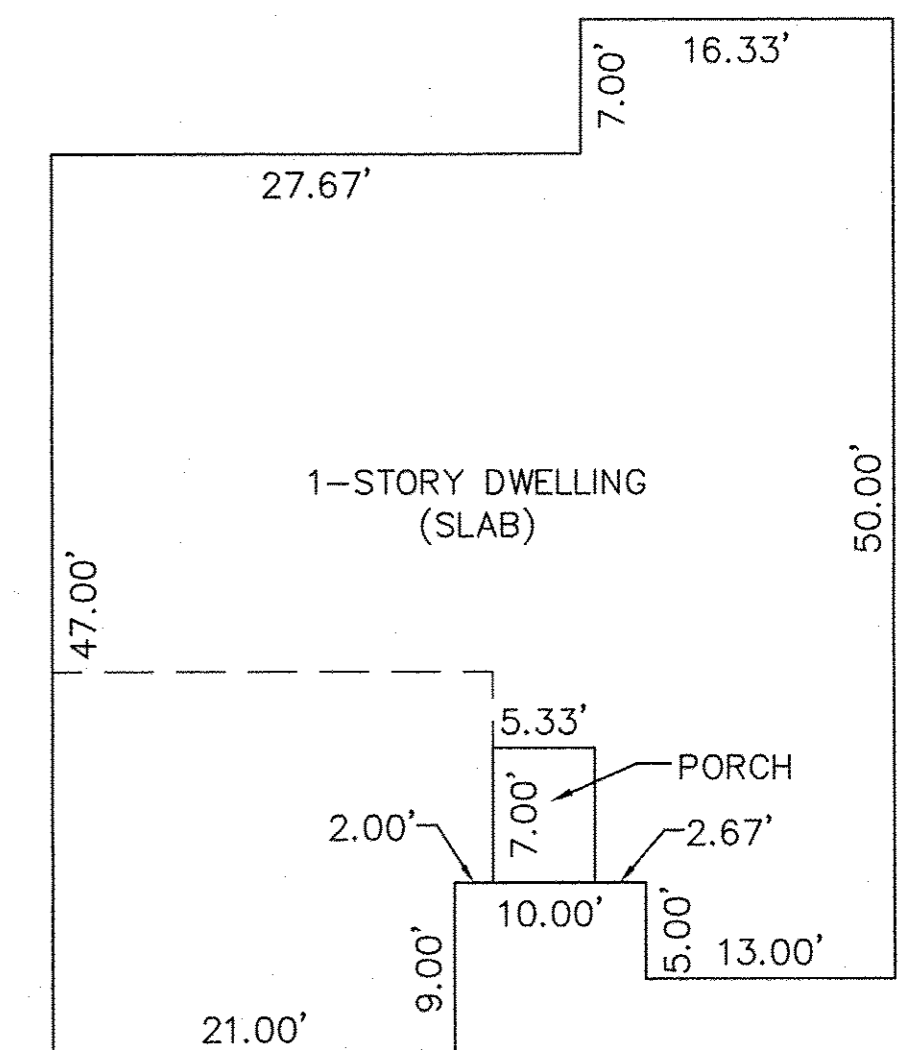
**RIGHT SIDE ELEVATION**



**REAR ELEVATION**



**FIRST FLOOR PLAN**  
(INTERIOR DIMENSIONS)

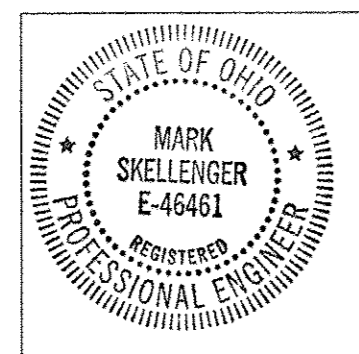


**FOUNDATION PLAN**  
(EXTERIOR DIMENSIONS)

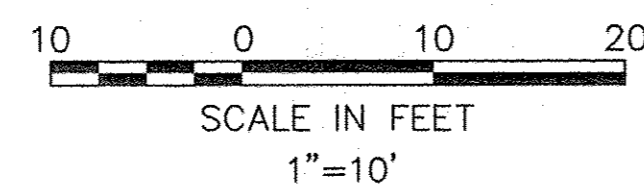
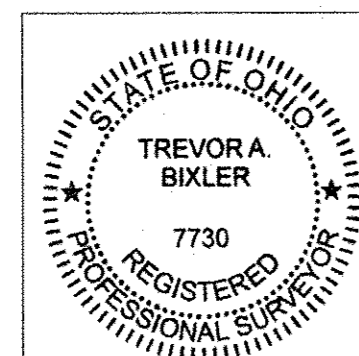
**UNIT 61**

**UNIT 62**

*Mark B. Skellenger*  
MARK B. SKELLENGER  
PROFESSIONAL ENGINEER NO. 46461



*Trevor A. Bixler* 8-21-17  
TREVOR A. BIXLER  
PROFESSIONAL SURVEYOR NO. 7730



DATE	DATE	DESCRIPTION	BY
8-21-17			

**KS**  
KS ASSOCIATES  
KS Associates, Inc.  
260 Burns Road, Suite 100  
Elyria, OH 44035  
P 440 365 4730  
F 440 365 4790  
www.ksassociates.com

**CHESAPEAKE CONDOMINIUM**  
**PHASE NO. 24**  
PART OF  
ORIGINAL CARLISLE TOWNSHIP SECTION NO. 5  
CITY OF ELYRIA COUNTY OF LORAIN STATE OF OHIO

SHEET  
**2**  
OF  
**2**  
JOB NO.  
**04142-CP24**