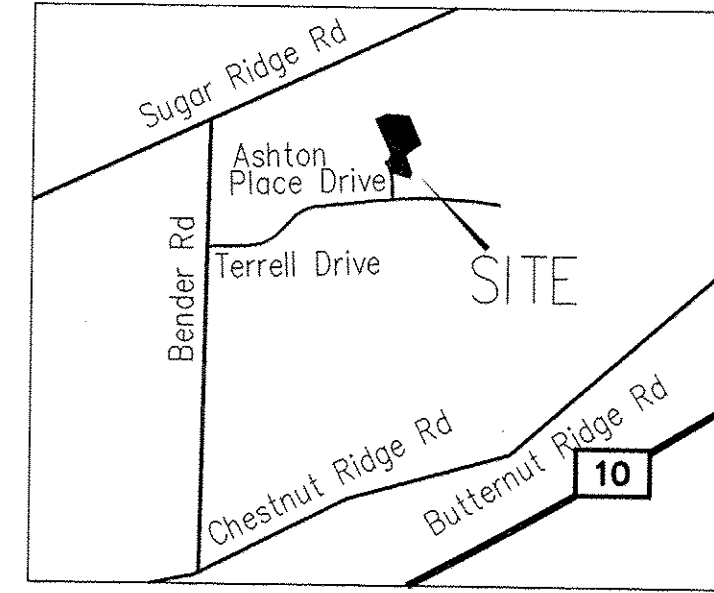
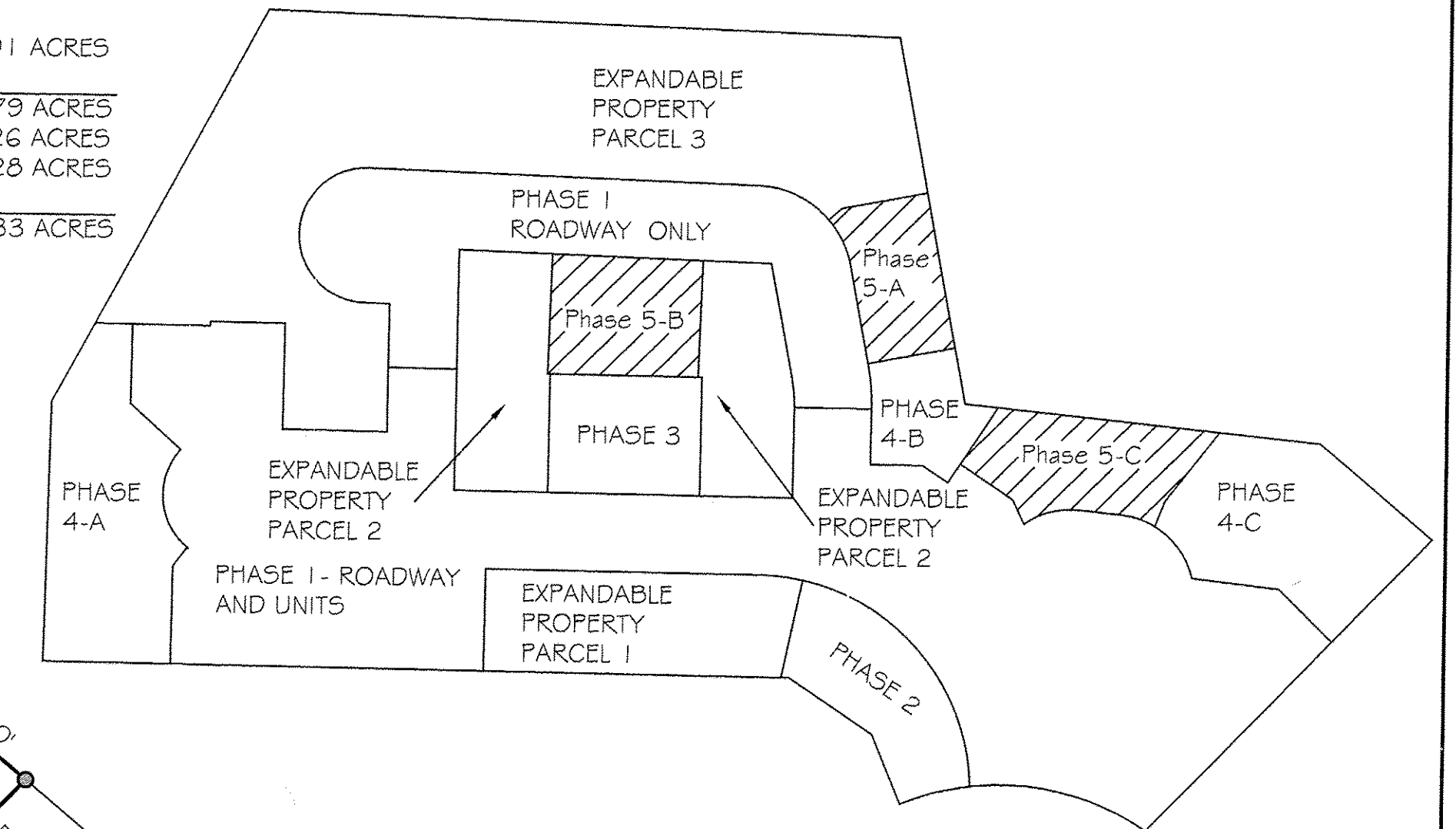


FOURTH AMENDMENT TO DECLARATION OF RE-ESTABLISHED CONDOMINIUM
 THE VILLAGE AT ASHTON PLACE CONDOMINIUM RE-FILE
 BEING A VACATION OF VILLAGE AT ASHTON PLACE CONDOMINIUM
 AMENDMENT 1 VOLUME 88 PAGES 40-48
 AMENDMENT 2 VOLUME 89 PAGES 11-17
 AMENDMENT 3 VOLUME 90 PAGES 02-05
 AND AMENDMENT 4 VOLUME 90 PAGES 34-37 LORAIN COUNTY PLAT RECORDS
 IN ORIGINAL RIDGEVILLE TOWNSHIP LOT NUMBER 38,
 NOW IN THE CITY OF NORTH RIDGEVILLE - LORAIN COUNTY - STATE OF OHIO
 DECEMBER, 2016
 SCALE: 1 INCH = 50 FEET



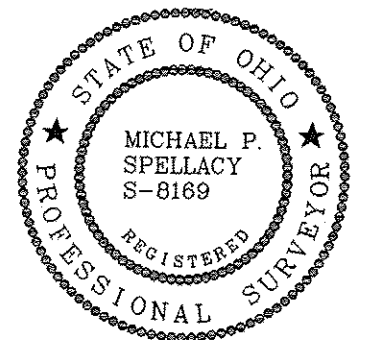
ACREAGE BREAKDOWN:

ACREAGE OF UNITS	0.2288 ACRES
ACREAGE OF COMMON ELEMENTS OUTSIDE OF BUILDINGS (NOT INCLUDING COMMON ELEMENTS UNDER BUILDINGS)	0.5091 ACRES
LAND DECLARED PHASE 5	0.7379 ACRES
PHASES 1-4	5.8926 ACRES
EXPANDABLE PROPERTY	3.1728 ACRES
TOTAL	9.8033 ACRES

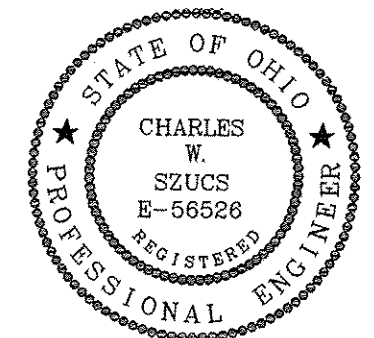


TRANSFERRED

IN COMPLIANCE WITH SEC 319-202
 OHIO REV. CODE
 JAN 17 2017
 J. CRAIG SNODGRASS, CPA, CGFM
 LORAIN COUNTY AUDITOR



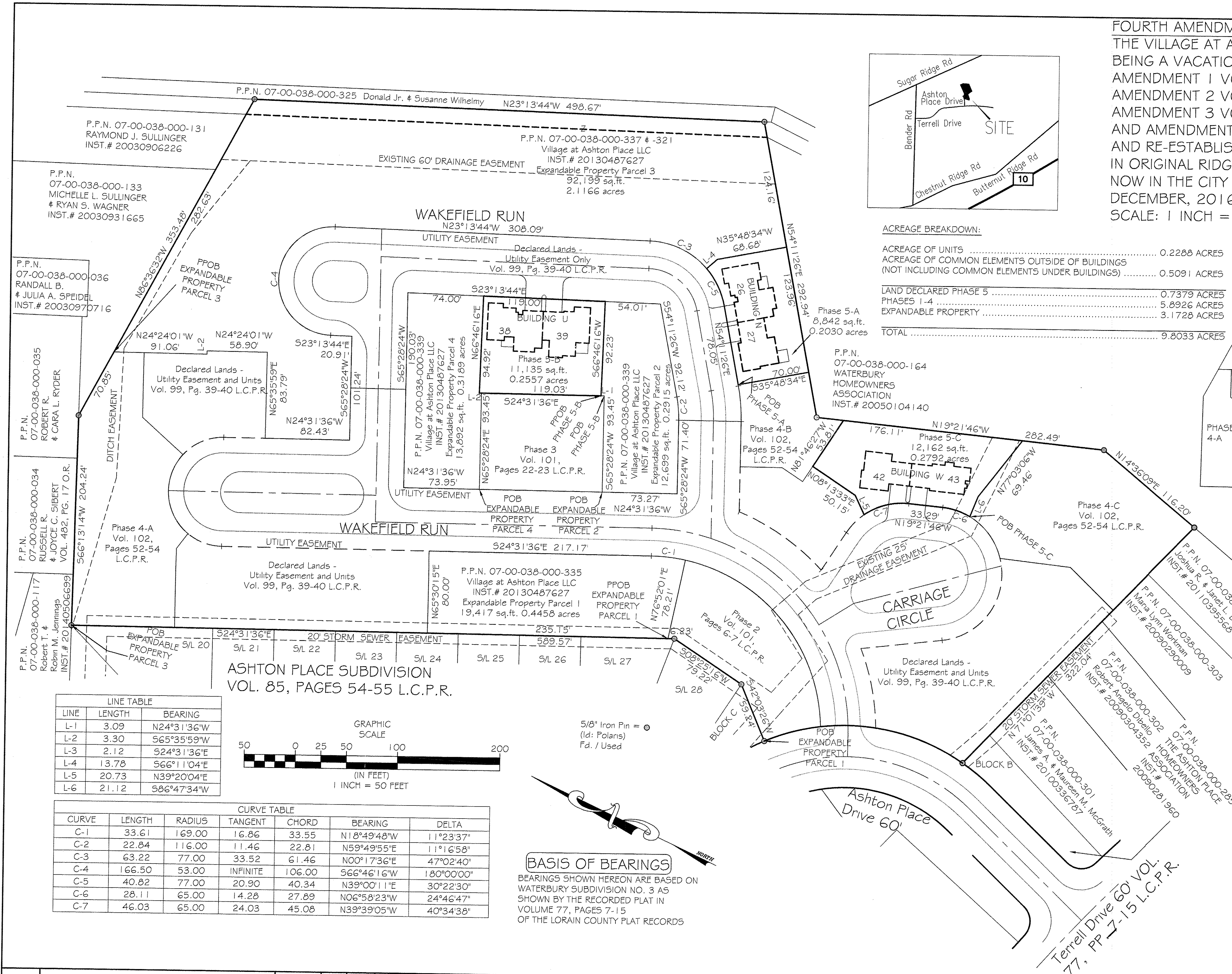
I HEREBY CERTIFY TO THE FOLLOWING: THAT THE LOCATIONS OF THE BUILDING FOUNDATIONS SHOWN BY THICK LINES AND DIMENSIONS, AND THEIR FINISHED FLOOR ELEVATIONS ARE ACCURATELY SHOWN FROM A FIELD SURVEY MADE UNDER MY DIRECT SUPERVISION, AND WERE ACTUALLY CONSTRUCTED.
 Michael P. Spellacy 12/13/16 12/13/2016
 MICHAEL P. SPELLACY, P.E. #8169 DATE



I HEREBY CERTIFY THAT THESE DRAWINGS ACCURATELY SHOW EACH BUILDING AS BUILT OR CONSTRUCTED.
 CW 12-13-16 12/13/2016
 CHARLES W. SZUCS, P.E. #56526 DATE

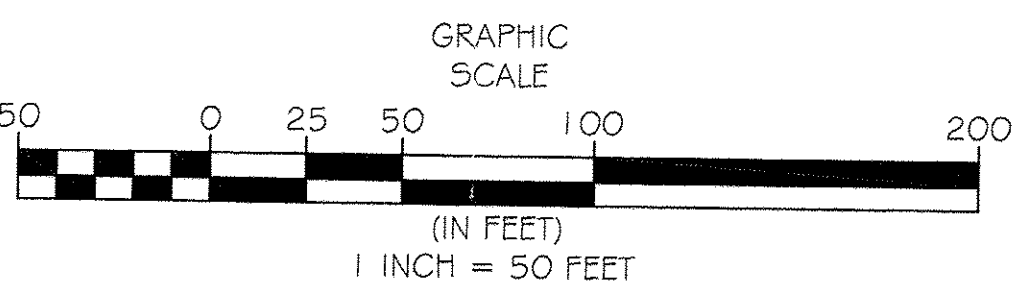
Doc ID: 0188363001 Type: OFP
 Kind: PLAT
 Recorded: 01/17/2017 at 10:36:04 AM
 Fee Amt: \$263.20 Page 1 of 1
 Lorain County, Ohio
 Judith M. Neuhoff, County Recorder
 File # 2017-0615440
 Vol 103 pgs 1,2,3

FIDELITY NATIONAL TITLE COMPANY, LLC
 5340 MEADOW LANE
 SHEFFIELD VILLAGE, OH 44054



LINE TABLE

LINE	LENGTH	BEARING
L-1	3.09	N24°31'36"W
L-2	3.30	S65°35'59"W
L-3	2.12	S24°31'36"E
L-4	13.78	S66°11'04"E
L-5	20.73	N39°20'04"E
L-6	21.12	S86°47'34"W



CURVE TABLE

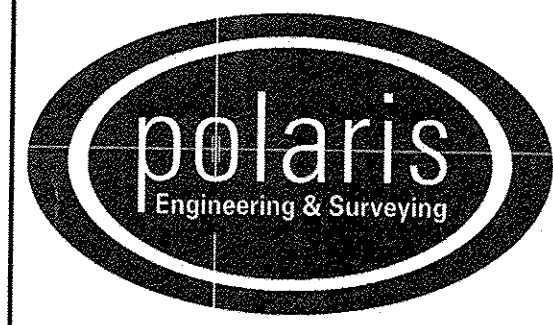
CURVE	LENGTH	RADIUS	TANGENT	CHORD	BEARING	DELTA
C-1	33.61	169.00	16.86	33.55	N18°49'48"W	11°23'37"
C-2	22.84	116.00	11.46	22.81	N59°49'55"E	11°16'58"
C-3	63.22	77.00	33.52	61.46	N00°17'36"E	47°02'40"
C-4	166.50	53.00	INFINITE	106.00	S66°46'16"W	180°00'00"
C-5	40.82	77.00	20.90	40.34	N39°00'11"E	30°22'30"
C-6	28.11	65.00	14.28	27.89	N06°58'23"W	24°46'47"
C-7	46.03	65.00	24.03	45.08	N39°39'05"W	40°34'38"

BASIS OF BEARINGS
 BEARINGS SHOWN HEREON ARE BASED ON WATERBURY SUBDIVISION NO. 3 AS SHOWN BY THE RECORDED PLAT IN VOLUME 77, PAGES 7-15 OF THE LORAIN COUNTY PLAT RECORDS

REV. No.	DATE	BY	CHK'D

DATE: 12/13/2016
 SCALE: HOR. 1"=50'
 VERT. 1"=0'
 FOLDER: Surveys/Plats
 FILENAME: Replat-04
 TAB: Phase 5-01
 DRAWN: MPS

VILLAGE AT ASHTON PLACE CONDOMINIUM RE-FILE PHASE 5
 PART OF ORIGINAL RIDGEVILLE TOWNSHIP LOT 38
 CITY OF NORTH RIDGEVILLE - LORAIN COUNTY - OHIO

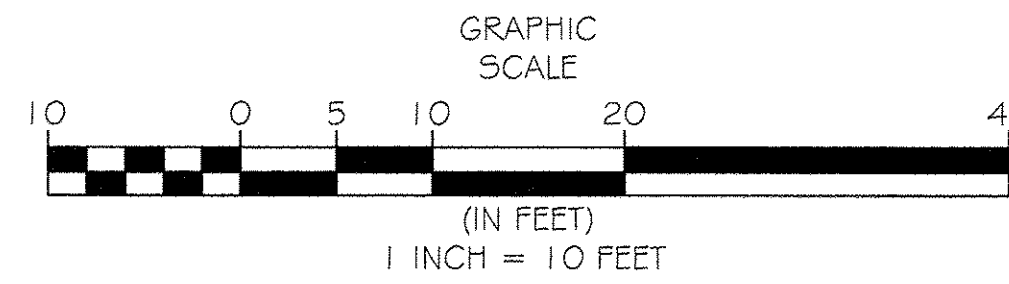


POLARIS ENGINEERING & SURVEYING, INC.
 34600 CHARDON ROAD - SUITE D
 WILLOUGHBY HILLS, OHIO
 44094 (440) 944-4433 (440) 944-3722 (Fax)
 www.polaris-es.com

PHASE 5 VILLAGE AT ASHTON PLACE CONDOMINIUM AS RE-ESTABLISHED

CONTRACT No.	
14262	
SHEET	OF
01	03

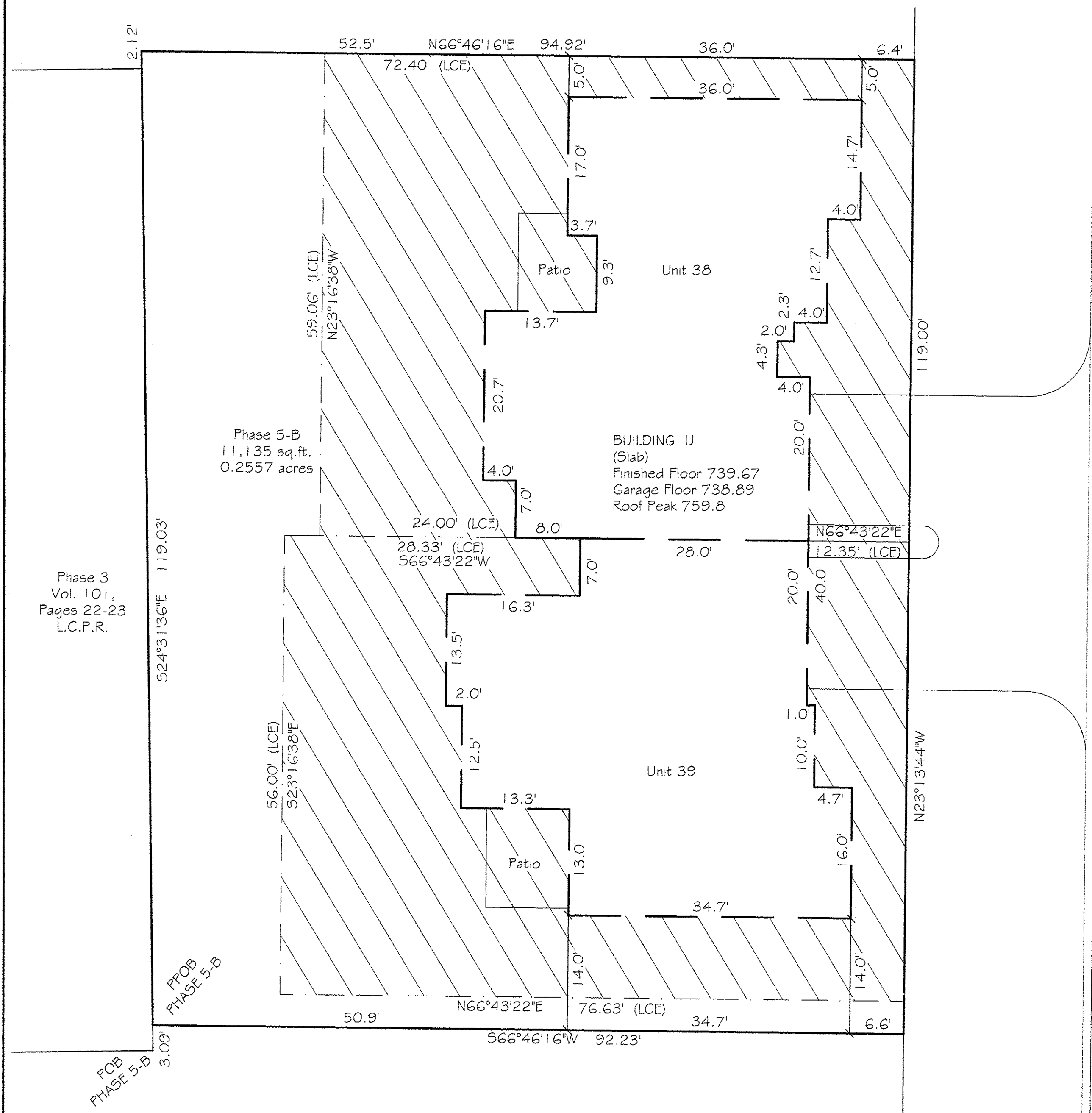
FOURTH AMENDMENT TO DECLARATION OF RE-ESTABLISHED CONDOMINIUM
 THE VILLAGE AT ASHTON PLACE CONDOMINIUM RE-FILE
 BEING A VACATION OF VILLAGE AT ASHTON PLACE CONDOMINIUM
 AMENDMENT 1 VOLUME 88 PAGES 40-48
 AMENDMENT 2 VOLUME 89 PAGES 11-17
 AMENDMENT 3 VOLUME 90 PAGES 02-05
 AND AMENDMENT 4 VOLUME 90 PAGES 34-37 LORAIN COUNTY PLAT RECORDS
 AND RE-ESTABLISHMENT OF CONDOMINIUM
 IN ORIGINAL RIDGEVILLE TOWNSHIP LOT NUMBER 38,
 NOW IN THE CITY OF NORTH RIDGEVILLE - LORAIN COUNTY - STATE OF OHIO
 DECEMBER, 2016
 SCALE: 1 INCH = 10 FEET



= LIMITED COMMON ELEMENTS

LINE TABLE		
LINE	LENGTH	BEARING
L-4	13.78	S66°11'04"E

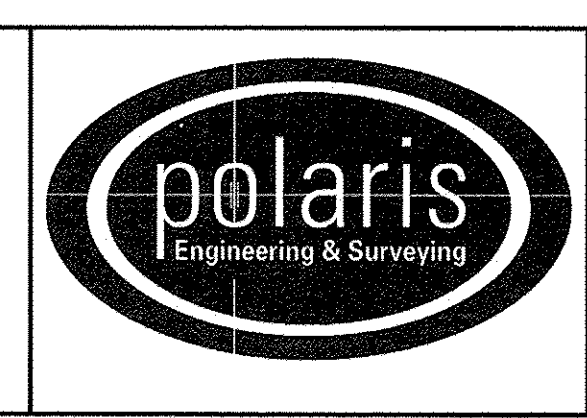
CURVE TABLE						
CURVE	LENGTH	RADIUS	TANGENT	CHORD	BEARING	DELTA
C-5	40.82	77.00	20.90	40.34	N39°00'11"E	30°22'30"



WAKEFIELD RUN

REV. No.	DATE	BY	CHK'D

DATE: 12/13/2016
 SCALE: HOR. 1"=50'
 VERT. 1"=0'
 FOLDER: Surveys/Plats
 FILENAME: Replat-04
 TAB: Phase 5-02
 DRAWN: MPS

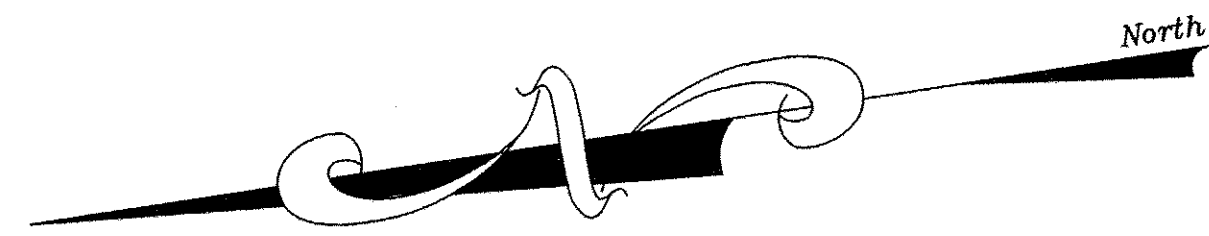
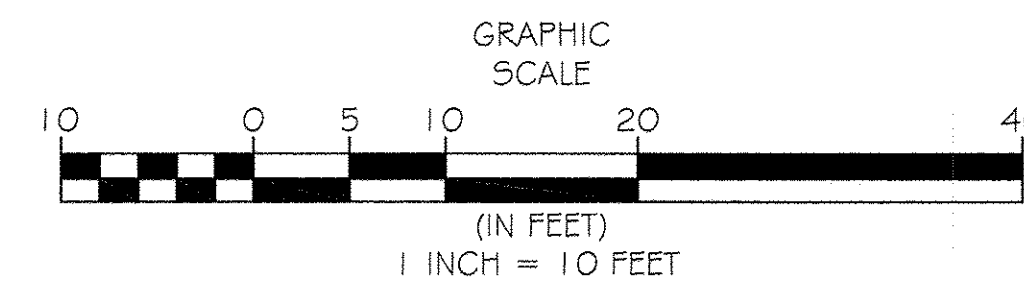


POLARIS ENGINEERING & SURVEYING, INC.
 34600 CHARDON ROAD - SUITE D
 WILLOUGHBY HILLS, OHIO
 44094 (440) 944-4433 (440) 944-3722 (Fax)
 www.polaris-es.com

PHASE 5
 VILLAGE AT ASHTON PLACE
 CONDOMINIUM
 AS RE-ESTABLISHED

CONTRACT No.	
14262	
SHEET	OF
02	03

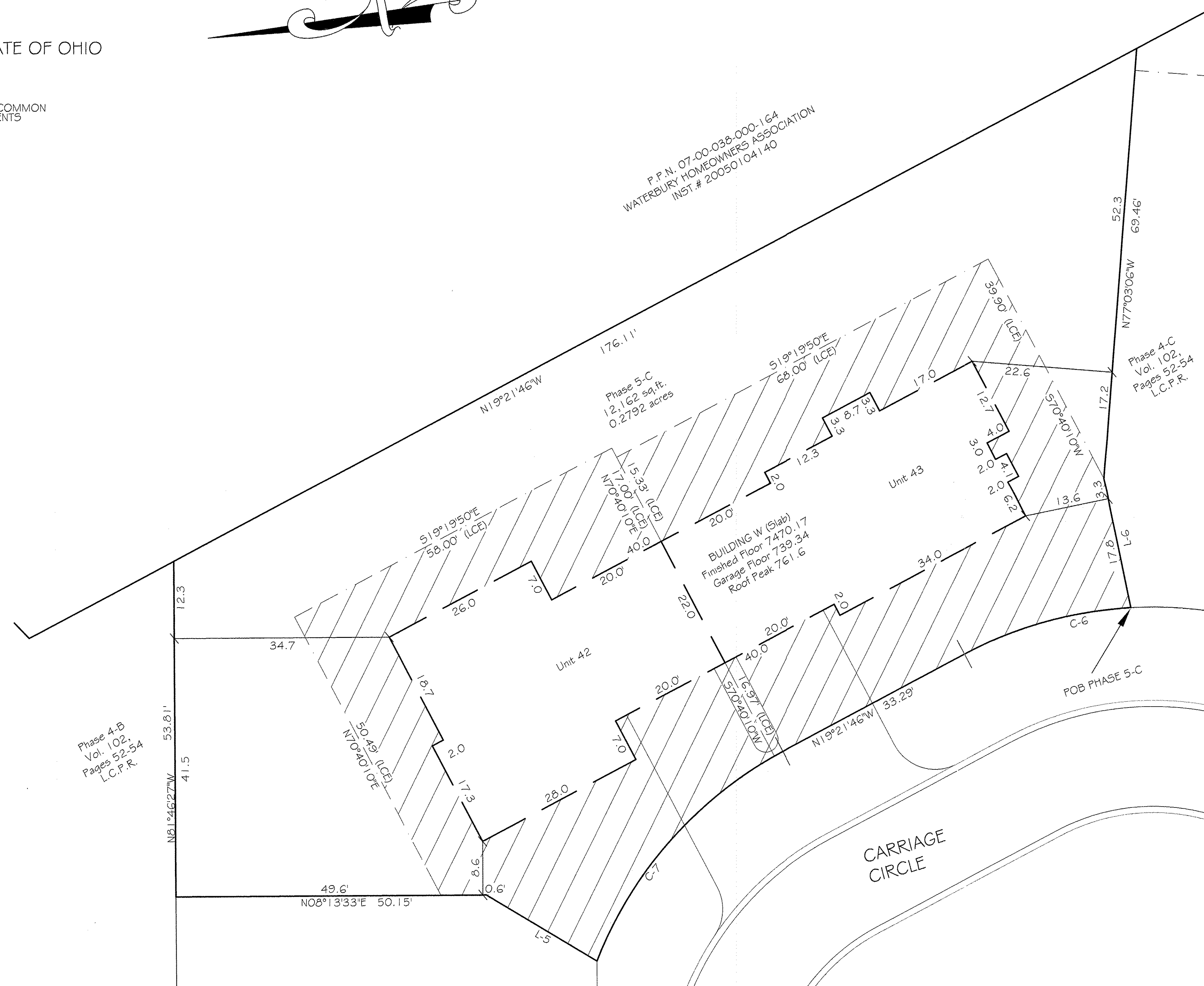
FOURTH AMENDMENT TO DECLARATION OF RE-ESTABLISHED CONDOMINIUM
 THE VILLAGE AT ASHTON PLACE CONDOMINIUM RE-FILE
 BEING A VACATION OF VILLAGE AT ASHTON PLACE CONDOMINIUM
 AMENDMENT 1 VOLUME 88 PAGES 40-48
 AMENDMENT 2 VOLUME 89 PAGES 11-17
 AMENDMENT 3 VOLUME 90 PAGES 02-05
 AND AMENDMENT 4 VOLUME 90 PAGES 34-37 LORAIN COUNTY PLAT RECORDS
 AND RE-ESTABLISHMENT OF CONDOMINIUM
 IN ORIGINAL RIDGEVILLE TOWNSHIP LOT NUMBER 38,
 NOW IN THE CITY OF NORTH RIDGEVILLE - LORAIN COUNTY - STATE OF OHIO
 DECEMBER, 2016
 SCALE: 1 INCH = 10 FEET



 = LIMITED COMMON ELEMENTS

LINE TABLE		
LINE	LENGTH	BEARING
L-5	20.73	N39°20'04"E
L-6	21.12	S86°47'34"W

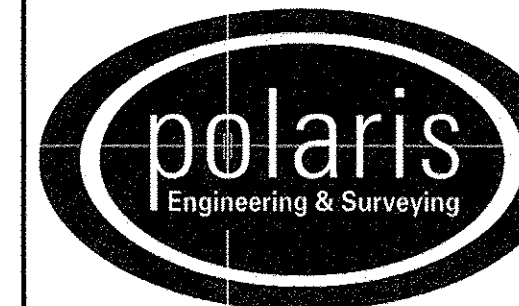
CURVE TABLE						
CURVE	LENGTH	RADIUS	TANGENT	CHORD	BEARING	DELTA
C-6	28.11	65.00	14.28	27.89	N06°58'23"W	24°46'47"
C-7	46.03	65.00	24.03	45.08	N39°39'05"W	40°34'38"



REV. No.	DATE	BY	CHK'D

DATE: 12/13/2016
 SCALE: HOR. 1"=50'
 VERT. 1"=0'
 FOLDER: Surveys/Plats
 FILENAME: Replat-04
 TAB: Phase 5-03
 DRAWN: MPS

VILLAGE AT ASHTON PLACE
 CONDOMINIUM RE-FILE
 PHASE 5
 PART OF ORIGINAL RIDGEVILLE TOWNSHIP LOT 38
 CITY OF NORTH RIDGEVILLE - LORAIN COUNTY - OHIO



POLARIS ENGINEERING & SURVEYING, INC.
 34600 CHARDON ROAD - SUITE D
 WILLOUGHBY HILLS, OHIO
 44094 (440) 944-4433 (440) 944-3722 (Fax)
 www.polaris-es.com

PHASE 5
 VILLAGE AT ASHTON PLACE
 CONDOMINIUM
 AS RE-ESTABLISHED

CONTRACT No.	
14262	
SHEET	OF
03	03