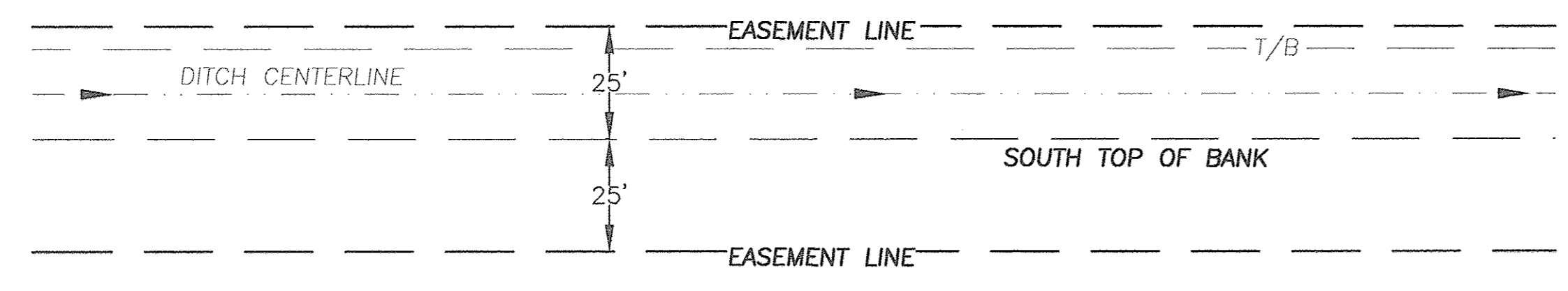
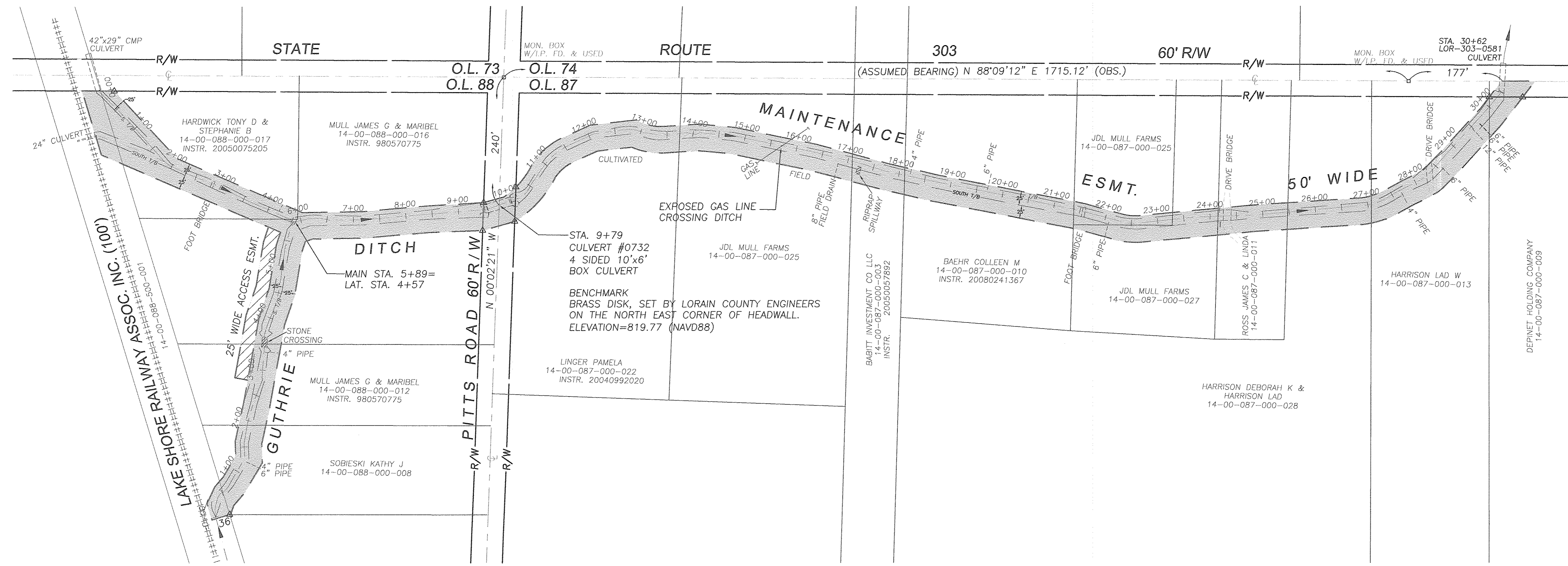


L.C.E. PROJECT REF. NO. CAD FILE NAME: K:\COMMUNITY SURVEY\PROJECTS\2016\GUTHRIE DITCH



**EASEMENT SCHEMATIC**  
NO SCALE

- LEGEND**
- T/B TOP OF BANK OF DITCH
  - DITCH CENTER LINE
  - 20+00 DITCH STATION MEASUREMENT (FEET)
  - ▲ MARKER SET

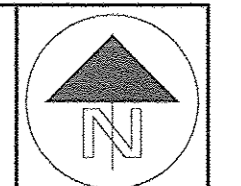
This easement has been examined and the Grantor has complied with Section 3.19.02 of the Revised Code.  
**FEE \$** *12,371.00*  
**EXEMPT \$** *0*  
 J. Craig Snodgrass, CPA, CGFM, County Auditor

Doc ID: 019811980001 Type: OFF  
 Kind: PLAT  
 Recorded: 12/27/2016 at 11:51:26 AM  
 Fee Amt: \$0.00 Page 1 of 1  
 Lorain County, Ohio  
 Judith M Hedrick County Recorder  
 File # 2016-0613150

LORAIN COUNTY ENGINEERS  
 247 HADAWAY STREET  
 ELYRIA, OH 44035  
 Plat Vol 102  
 Pg. 95



*Peter D. Zwick*  
 PETER D. ZWICK, P.E., P.S.  
 DEPUTY COUNTY ENGINEER  
 DEC. 23, 2016

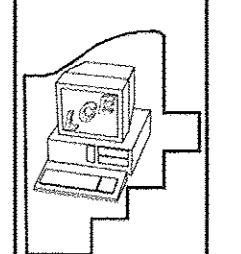


DRAWN BY: 0  
 DMC 12/16  
 CHECKED BY:  
 PDZ 12/16  
 SCALE IN FEET

DITCH EASEMENT PLAT

GUTHRIE (DAVIS) DITCH PHASE 3  
 PITTSFIELD TWP. O.L. 87 & O.L. 88

PLANS PREPARED BY:  
 LORAIN COUNTY  
 ENGINEER'S OFFICE



1  
 1