

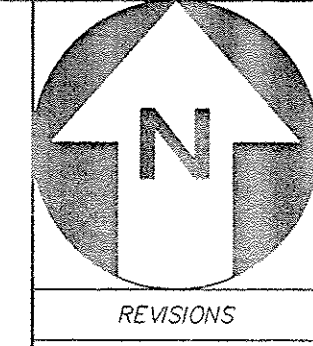
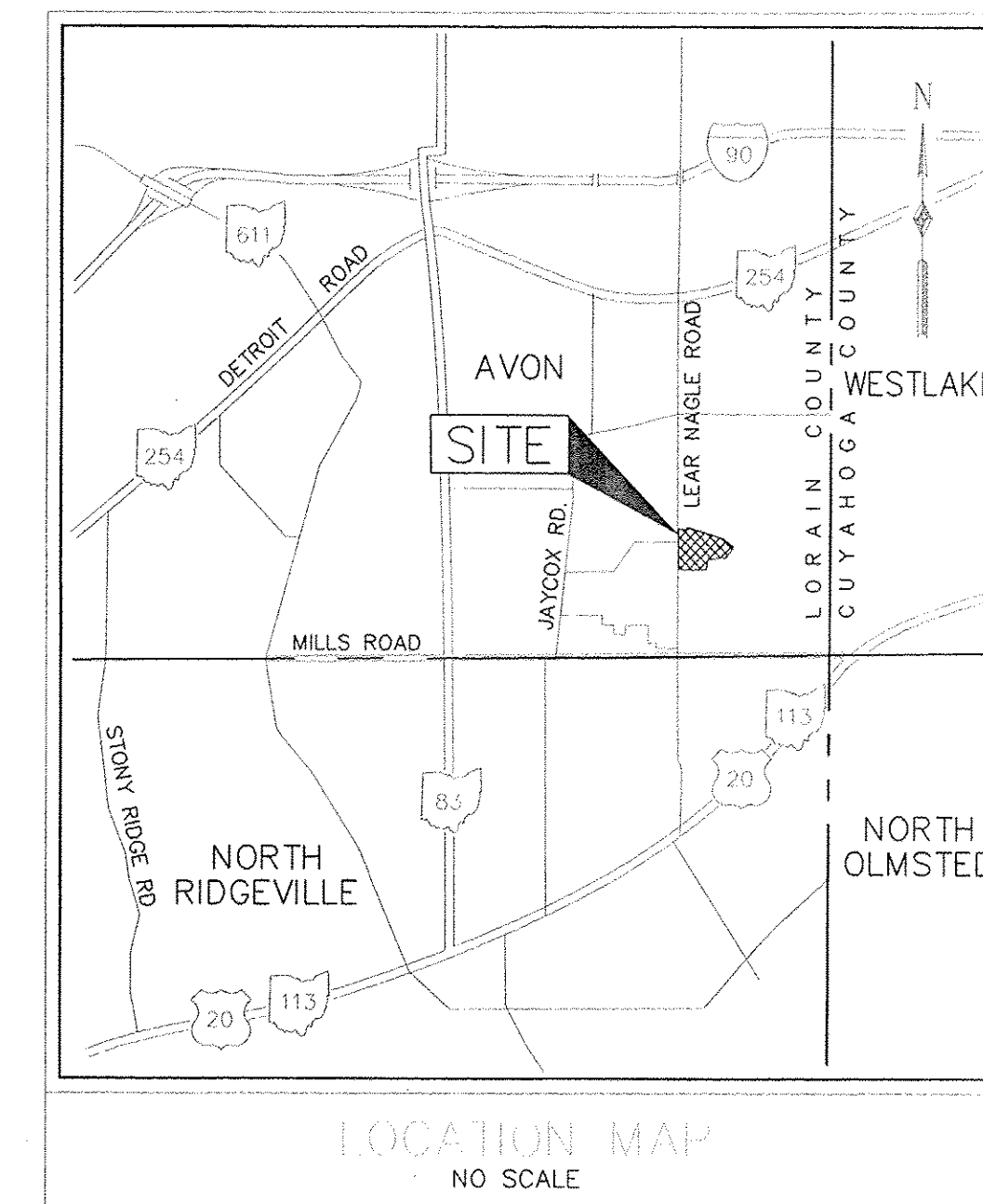
CORRECTION OF BEARING

THIS PLAT DEPICTS A CORRECTION OF BEARING ANGLE ALONG NAGEL ROAD

SUBDIVISION PLAT

RED TAIL DEVELOPMENT NO. 6

PART OF ORIGINAL AVON TOWNSHIP SECTION NO. 25 CITY OF AVON, COUNTY OF LORAIN, STATE OF OHIO CONTAINING 8.9888 ACRES OF LAND OF WHICH 3.2383 ACRES ARE DEDICATED STREETS, 1.1939 ACRES ARE IN BLOCKS AND 4.5566 ACRES ARE WITHIN THE SUBDIVISION OF LOTS 349 TO 378 INCLUSIVE.



REVISIONS

EUTHENICS, INC. CONSULTING ENGINEERS

RED TAIL DEVELOPMENT NO. 6 SUBDIVISION PLAT

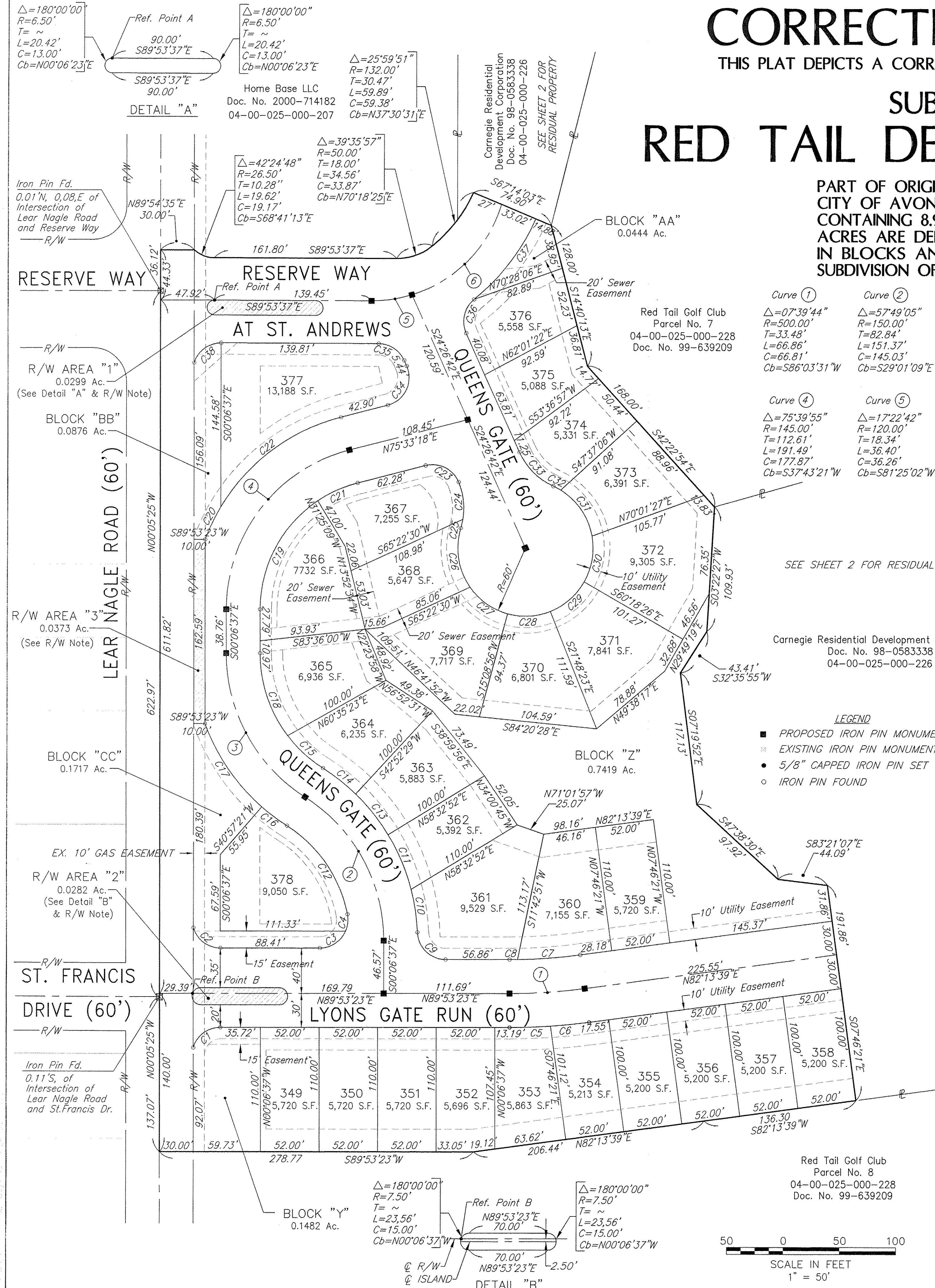
WORD SCALE 1"=50'

GRAPHIC SCALE

DATE 9-30-16

PLAT NO. PH06-PLATCORR

1/2



CURVE TABLE

Curve No.	Radius	Delta	Arc Length	Tangent	Chord
Curve 1	25.00'	73°34'23"	32.10'	18.96'	S53°06'11"W 29.94'
Curve 2	25.00'	73°16'37"	31.97'	18.59'	S53°28'18"E 29.84'
Curve 3	25.00'	66°25'19"	28.98'	16.37'	N56°40'44"E 27.39'
Curve 4	25.00'	34°45'46"	15.17'	7.83'	N06°05'12"E 14.94'
Curve 5	530.00'	3°56'07"	36.40'	18.21'	N87°55'20"E 36.40'
Curve 6	530.00'	3°43'37"	34.47'	17.24'	N84°05'28"E 34.47'
Curve 7	470.00'	6°48'37"	55.86'	27.97'	N85°37'58"E 55.83'
Curve 8	470.00'	0°51'07"	6.99'	3.49'	N89°27'50"E 6.99'
Curve 9	25.00'	87°38'39"	38.24'	23.99'	S46°17'18"E 34.62'
Curve 10	180.00'	12°11'40"	38.31'	19.23'	N08°33'48"W 38.24'
Curve 11	180.00'	16°47'29"	52.75'	26.57'	N23°03'23"W 52.56'
Curve 12	120.00'	46°38'00"	97.67'	51.72'	N34°36'41"W 95.00'
Curve 13	180.00'	14°45'06"	46.34'	23.30'	N38°49'41"W 46.22'
Curve 14	180.00'	11°43'28"	36.83'	18.48'	N52°03'58"W 36.77'
Curve 15	120.00'	20°22'54"	42.69'	21.57'	S47°44'14"E 42.46'
Curve 16	180.00'	8°53'02"	27.91'	13.98'	S53°29'10"E 27.88'
Curve 17	180.00'	28°41'20"	90.13'	46.03'	S34°41'59"E 89.19'
Curve 18	120.00'	37°26'10"	78.41'	40.66'	S18°49'42"E 77.02'
Curve 19	115.00'	56°13'44"	112.86'	61.44'	S28°00'15"W 108.38'
Curve 20	175.00'	10°28'28"	31.99'	16.04'	S25°42'55"W 31.95'
Curve 21	115.00'	19°26'11"	39.01'	19.69'	S65°50'12"W 38.82'
Curve 22	175.00'	44°36'09"	136.23'	71.78'	S53°15'14"W 132.82'
Curve 23	25.00'	81°46'12"	35.68'	21.64'	N63°33'36"W 32.73'
Curve 24	60.00'	32°07'02"	33.63'	17.27'	N06°36'59"W 33.19'
Curve 25	60.00'	7°31'21"	7.88'	3.94'	N13°12'13"E 7.87'
Curve 26	60.00'	52°06'36"	54.57'	29.34'	S09°05'25"E 52.71'
Curve 27	60.00'	39°42'21"	41.58'	21.66'	S54°59'54"E 40.75'
Curve 28	60.00'	36°57'19"	38.70'	20.05'	N86°40'16"E 38.03'
Curve 29	60.00'	38°30'03"	40.32'	20.95'	N48°56'35"E 39.56'
Curve 30	60.00'	40°04'28"	41.97'	21.88'	N09°39'20"E 41.12'
Curve 31	60.00'	48°18'41"	50.59'	26.91'	N34°32'15"E 49.11'
Curve 32	60.00'	7°09'41"	7.50'	3.75'	N62°16'26"W 7.49'
Curve 33	60.00'	41°24'35"	43.36'	22.68'	S45°08'59"E 42.43'
Curve 34	25.00'	100°00'00"	43.63'	29.79'	N25°33'18"E 38.30'
Curve 35	25.00'	65°26'55"	28.56'	16.06'	N57°10'09"W 27.03'
Curve 36	25.00'	75°24'38"	32.90'	19.33'	S13°15'37"W 30.58'
Curve 37	192.00'	27°00'03"	90.48'	46.10'	N37°27'55"E 89.65'
Curve 38	25.00'	72°09'34"	31.49'	18.22'	S54°01'36"W 29.45'

CURVE TABLE

Curve No.	Radius	Delta	Arc Length	Tangent	Chord
Curve 1	25.00'	73°34'23"	32.10'	18.96'	S53°06'11"W 29.94'
Curve 2	25.00'	73°16'37"	31.97'	18.59'	S53°28'18"E 29.84'
Curve 3	25.00'	66°25'19"	28.98'	16.37'	N56°40'44"E 27.39'
Curve 4	25.00'	34°45'46"	15.17'	7.83'	N06°05'12"E 14.94'
Curve 5	530.00'	3°56'07"	36.40'	18.21'	N87°55'20"E 36.40'
Curve 6	530.00'	3°43'37"	34.47'	17.24'	N84°05'28"E 34.47'
Curve 7	470.00'	6°48'37"	55.86'	27.97'	N85°37'58"E 55.83'
Curve 8	470.00'	0°51'07"	6.99'	3.49'	N89°27'50"E 6.99'
Curve 9	25.00'	87°38'39"	38.24'	23.99'	S46°17'18"E 34.62'
Curve 10	180.00'	12°11'40"	38.31'	19.23'	N08°33'48"W 38.24'
Curve 11	180.00'	16°47'29"	52.75'	26.57'	N23°03'23"W 52.56'
Curve 12	120.00'	46°38'00"	97.67'	51.72'	N34°36'41"W 95.00'
Curve 13	180.00'	14°45'06"	46.34'	23.30'	N38°49'41"W 46.22'
Curve 14	180.00'	11°43'28"	36.83'	18.48'	N52°03'58"W 36.77'
Curve 15	120.00'	20°22'54"	42.69'	21.57'	S47°44'14"E 42.46'
Curve 16	180.00'	8°53'02"	27.91'	13.98'	S53°29'10"E 27.88'
Curve 17	180.00'	28°41'20"	90.13'	46.03'	S34°41'59"E 89.19'
Curve 18	120.00'	37°26'10"	78.41'	40.66'	S18°49'42"E 77.02'
Curve 19	115.00'	56°13'44"	112.86'	61.44'	S28°00'15"W 108.38'
Curve 20	175.00'	10°28'28"	31.99'	16.04'	S25°42'55"W 31.95'
Curve 21	115.00'	19°26'11"	39.01'	19.69'	S65°50'12"W 38.82'
Curve 22	175.00'	44°36'09"	136.23'	71.78'	S53°15'14"W 132.82'
Curve 23	25.00'	81°46'12"	35.68'	21.64'	N63°33'36"W 32.73'
Curve 24	60.00'	32°07'02"	33.63'	17.27'	N06°36'59"W 33.19'
Curve 25	60.00'	7°31'21"	7.88'	3.94'	N13°12'13"E 7.87'
Curve 26	60.00'	52°06'36"	54.57'	29.34'	S09°05'25"E 52.71'
Curve 27	60.00'	39°42'21"	41.58'	21.66'	S54°59'54"E 40.75'
Curve 28	60.00'	36°57'19"	38.70'	20.05'	N86°40'16"E 38.03'
Curve 29	60.00'	38°30'03"	40.32'	20.95'	N48°56'35"E 39.56'
Curve 30	60.00'	40°04'28"	41.97'	21.88'	N09°39'20"E 41.12'
Curve 31	60.00'	48°18'41"	50.59'	26.91'	N34°32'15"E 49.11'
Curve 32	60.00'	7°09'41"	7.50'	3.75'	N62°16'26"W 7.49'
Curve 33	60.00'	41°24'35"	43.36'	22.68'	S45°08'59"E 42.43'
Curve 34	25.00'	100°00'00"	43.63'	29.79'	N25°33'18"E 38.30'
Curve 35	25.00'	65°26'55"	28.56'	16.06'	N57°10'09"W 27.03'
Curve 36	25.00'	75°24'38"	32.90'	19.33'	S13°15'37"W 30.58'
Curve 37	192.00'	27°00'03"	90.48'	46.10'	N37°27'55"E 89.65'
Curve 38	25.00'	72°09'34"	31.49'	18.22'	S54°01'36"W 29.45'

CURVE TABLE

Curve No.	Radius	Delta	Arc Length	Tangent	Chord
Curve 1	25.00'	73°34'23"	32.10'	18.96'	S53°06'11"W 29.94'
Curve 2	25.00'	73°16'37"	31.97'	18.59'	S53°28'18"E 29.84'
Curve 3	25.00'	66°25'19"	28.98'	16.37'	N56°40'44"E 27.39'
Curve 4	25.00'	34°45'46"	15.17'	7.83'	N06°05'12"E 14.94'
Curve 5	530.00'	3°56'07"	36.40'	18.21'	N87°55'20"E 36.40'
Curve 6	530.00'	3°43'37"	34.47'	17.24'	N84°05'28"E 34.47'
Curve 7	470.00'	6°48'37"	55.86'	27.97'	N85°37'58"E 55.83'
Curve 8	470.00'	0°51'07"	6.99'	3.49'	N89°27'50"E 6.99'
Curve 9	25.00'	87°38'39"	38.24'	23.99'	S46°17'18"E 34.62'
Curve 10	180.00'	12°11'40"	38.31'	19.23'	N08°33'48"W 38.24'
Curve 11	180.00'	16°47'29"	52.75'	26.57'	N23°03'23"W 52.56'
Curve 12	120.00'	46°38'00"	97.67'	51.72'	N34°36'41"W 95.00'
Curve 13	180.00'	14°45'06"	46.34'	23.30'	N38°49'41"W 46.22'
Curve 14	180.00'	11°43'28"	36.83'	18.48'	N52°03'58"W 36.77'
Curve 15	120.00'	20°22'54"	42.69'	21.57'	S47°44'14"E 42.46'
Curve 16	180.00'	8°53'02"	27.91'	13.98'	S53°29'10"E 27.88'
Curve 17	180.00'	28°41'20"	90.13'	46.03'	S34°41'59"E 89.19'
Curve 18	120.00'	37°26'10"	78.41'	40.66'	S18°49'42"E 77.02'
Curve 19	115.00'	56°13'44"	112.86'	61.44'	S28°00'15"W 108.38'
Curve 20	175.00'	10°28'28"	31.99'	16.04'	S25°42'55"W 31.95'
Curve 21	115.00'	19°26'11"	39.01'	19.69'	S65°50'12"W 38.82'
Curve 22	175.00'	44°36'09"	136.23'	71.78'	S53°15'14"W 132.82'
Curve 23	25.00'	81°46'12"	35.68'	21.64'	N63°33'36"W 32.73'
Curve 24	60.00'	32°07'02"	33.63'	17.27'	N06°36'59"W 33.19'
Curve 25	60.00'	7°31'21"	7.88'	3.94'	N13°12'13"E 7.87'
Curve 26	60.00'	52°06'36"	54.57'	29.34'	S09°05'25"E 52.71'
Curve 27	60.00'	39°42'21"	41.58'	21.66'	S54°59'54"E 40.75'
Curve 28	60.00'	36°57'19"	38.70'	20.05'	N86°40'16"E 38.03'
Curve 29	60.00'	38°30'03"	40.32'	20.95'	N48°56'35"E 39.56'
Curve 30	60.00'	40°04'28"	41.97'	21.88'	N09°39'20"E 41.12'
Curve 31	60.00'	48°18'41"	50.59'	26.91'	N34°32'15"E 49.11'
Curve 32	60.00'	7°09'41"	7.50'	3.75'	N62°16'26"W 7.49'
Curve 33	60.00'	41°24'35"	43.36'	22.68'	S45°08'59"E 42.43'
Curve 34	25.00'	100°00'00"	43.63'	29.79'	N25°33'18"E 38.30'
Curve 35	25.00'	65°26'55"	28.56'	16.06'	N57°10'09"W 27.03'
Curve 36	25.00'	75°24'38"	32.90'	19.33'	S13°15'37"W 30.58'
Curve 37	192.00'	27°00'03"	90.48'	46.10'	N37°27'55"E 89.65'
Curve 38	25.00'	72°09'34"	31.49'	18.22'	S54°01'36"W 29.45'

CURVE TABLE

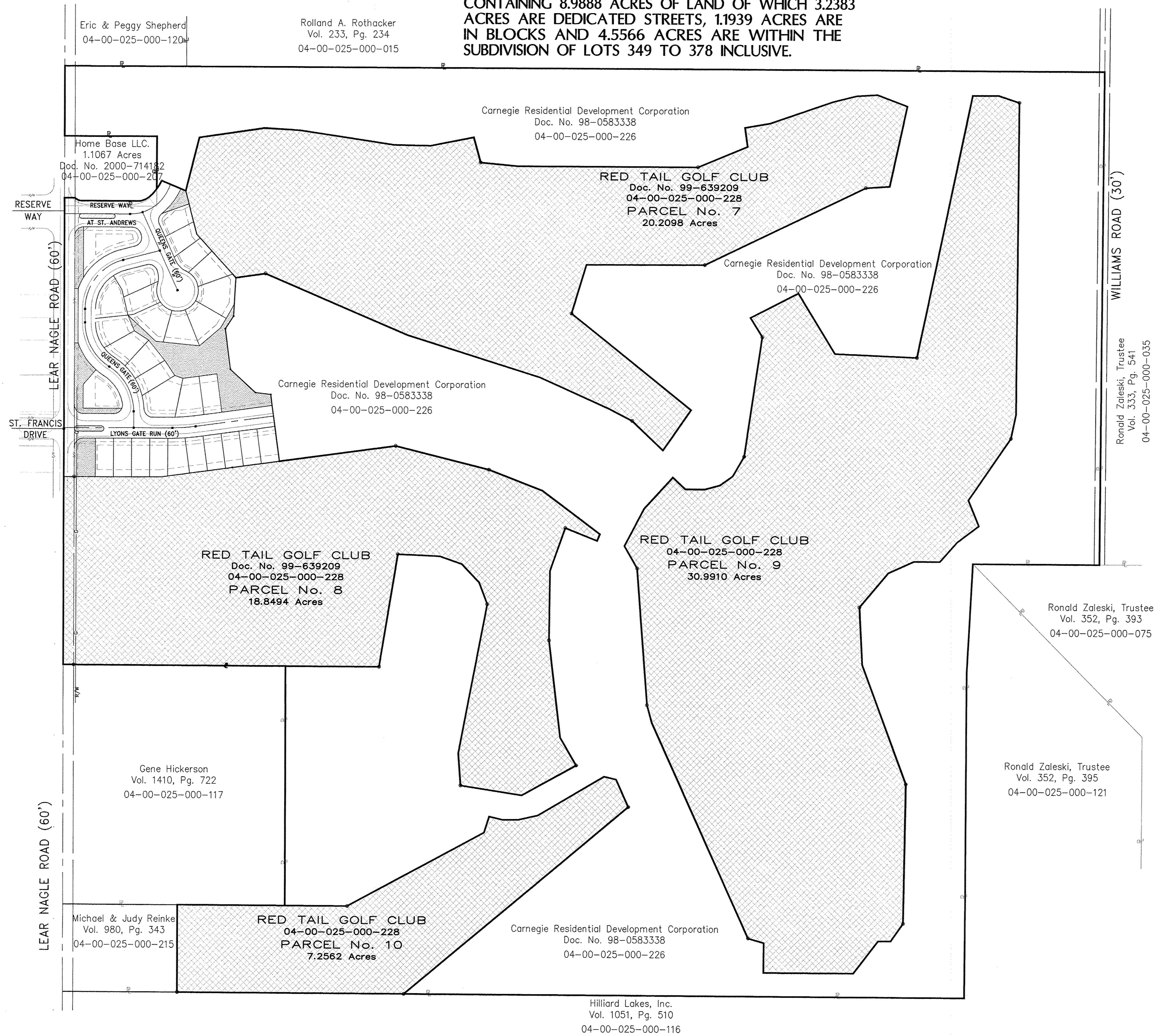
Curve No.	Radius	Delta	Arc Length	Tangent	Chord
Curve 1	25.00'	73°34'23"	32.10'	18.96'	S53°06'11"W 29.94'
Curve 2	25.00'	73°16'37"	31.97'	18.59'	S53°28'18"E 29.84'
Curve 3	25.00'	66°25'19"	28.98'	16.37'	N56°40'44"E 27.39'
Curve 4	25.00'	34°45'46"	15.17'	7.83'	N06°05'12"E 14.94'
Curve 5	530.00'	3°56'07"	36.40'	18.21'	N87°55'20"E 36.40'
Curve 6	530.00'	3°43'37"	34.47'	17.24'	N84°05'28"E 34.47'
Curve 7	470.00'	6°48'37"	55.86'	27.97'	N85°37'58"E 55.83'
Curve 8	470.00'	0°51'07"	6.99'	3.49'	N89°27'50"E 6.99'
Curve 9	25.00'	87°38'39"	38.24'	23.99'	S46°17'18"E 34.62'
Curve 10	180.00'	12°11'40"	38.31'	19.23'	N08°33'48"W 38.24'
Curve 11	180.00'	16°47'29"	52.75'	26.57'	N23°03'23"W 52.56'
Curve 12	120.00'	46°38'00"	97.67'	51.72'	N34°36'41"W 95.00'
Curve 13	180.00'	14°45'06"	46.34'	23.30'	N38°49'41"W 46.22'
Curve 14	180.00'	11°43'28"	36.83'	18.48'	N52°03'58"W 36.77'
Curve 15	120.00'	20°22'54"	42.69'	21.57'	S47°44'14"E 42.46'
Curve 16	180.00'	8°53'02"	27.91'	13.98'	S53°29'10"E 27.88'
Curve 17	180.00'	28°41'20"	90.13'	46.03'	S34°41'59"E 89.19'
Curve 18	120.00'	37°26'10"	78.41'	40.66'	S18°49'42"E 77.02'
Curve 19	115.00'	56°13'44"	112.86'	61.44'	S28°00'15"W 108.38'
Curve 20	175.00'	10°28'28"	31.9		

CORRECTION OF BEARING

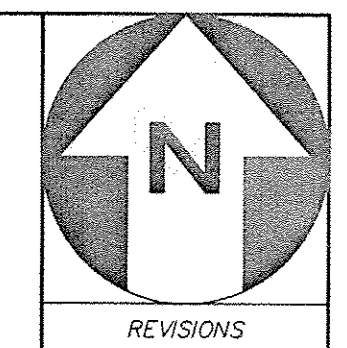
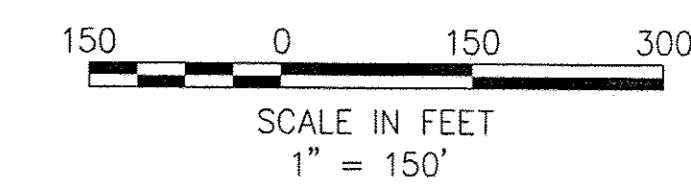
THIS PLAT DEPICTS A CORRECTION OF BEARING ANGLE ALONG NAGEL ROAD

RED TAIL DEVELOPMENT NO. 6

PART OF ORIGINAL AVON TOWNSHIP SECTION NO. 25
CITY OF AVON, COUNTY OF LORAIN, STATE OF OHIO
CONTAINING 8.9888 ACRES OF LAND OF WHICH 3.2383
ACRES ARE DEDICATED STREETS, 1.1939 ACRES ARE
IN BLOCKS AND 4.5566 ACRES ARE WITHIN THE
SUBDIVISION OF LOTS 349 TO 378 INCLUSIVE.



REMAINING AREA OF PARCEL
04-00-025-000-226
DOC. NO. 98-0583338
AFTER PHASE 6 DEVELOPMENT
IS 70.8848 ACRES



REVISIONS

NO.	DATE	DESCRIPTION



EUTHENICS INC.
CONSULTING ENGINEERS
375 KEYNOTE CIRCLE, CLEVELAND, OHIO 44131
PHONE: (216) 749-1555 ~ FAX: (216) 749-1795

RED TAIL DEVELOPMENT NO. 6
SUBDIVISION PLAT

HORIZ. SCALE	1" = 150'
VERT. SCALE	1" = 150'
DESIGNED	VMB
DRAWN	VMB
CHECKED	
DATE	9-30-16
DRAWING NAME	PH06-PLATCORR2

