

# GREAT LAKES STORAGE CONDOMINIUM

SITUATED IN THE CITY OF SHEFFIELD LAKE, COUNTY OF LORAIN, STATE OF OHIO, AND KNOWN AS BEING PART OF ORIGINAL SHEFFIELD TOWNSHIP LOT NUMBER 33. KNOWN AS BEING A RE-SUBDIVISION OF SUBLOTS 5-10 IN BLOCK D IN THE SUNSET COUNTRY CLUB ALLOTMENT AS RECORDED IN VOLUME 11, PAGE 6 OF THE LORAIN COUNTY PLAT RECORDS.

### OVERALL ACREAGE BREAKDOWN

TOTAL UNIT AREA:	9000.00 SQ. FT.	0.2066 OF AN ACRE
TOTAL LIMITED COMMON AREA:	4279.43 SQ. FT.	0.0982 OF AN ACRE
TOTAL COMMON AREA:	8407.97 SQ. FT.	0.1930 OF AN ACRE
OVERALL GREAT LAKES STORAGE CONDOMINIUM:	21687.40 SQ. FT.	0.4979 OF AN ACRE

### UNIT BREAKDOWN

UNIT #	LIMITED AREA	LIMITED COMMON AREA
UNIT 1	1000.00 SQ. FT. 0.0230 OF AN ACRE	475.89 SQ. FT. 0.0109 OF AN ACRE
UNIT 2	1000.00 SQ. FT. 0.0230 OF AN ACRE	505.41 SQ. FT. 0.0116 OF AN ACRE
UNIT 3	1000.00 SQ. FT. 0.0230 OF AN ACRE	496.07 SQ. FT. 0.0114 OF AN ACRE
UNIT 4	1000.00 SQ. FT. 0.0230 OF AN ACRE	496.45 SQ. FT. 0.0114 OF AN ACRE
UNIT 5	1000.00 SQ. FT. 0.0230 OF AN ACRE	488.15 SQ. FT. 0.0112 OF AN ACRE
UNIT 6	1000.00 SQ. FT. 0.0230 OF AN ACRE	489.64 SQ. FT. 0.0112 OF AN ACRE
UNIT 7	1000.00 SQ. FT. 0.0230 OF AN ACRE	481.18 SQ. FT. 0.0110 OF AN ACRE
UNIT 8	2000.00 SQ. FT. 0.0459 OF AN ACRE	846.64 SQ. FT. 0.0194 OF AN ACRE
TOTAL	9000.00 SQ. FT. 0.2066 OF AN ACRE	4279.43 SQ. FT. 0.0982 OF AN ACRE

### CERTIFICATION

THIS IS TO CERTIFY THAT THE ATTACHED DRAWINGS CORRECTLY REPRESENT THE BUILDING AS OBSERVED BY RAFTER A, LTD ON OCTOBER 18th 2016.

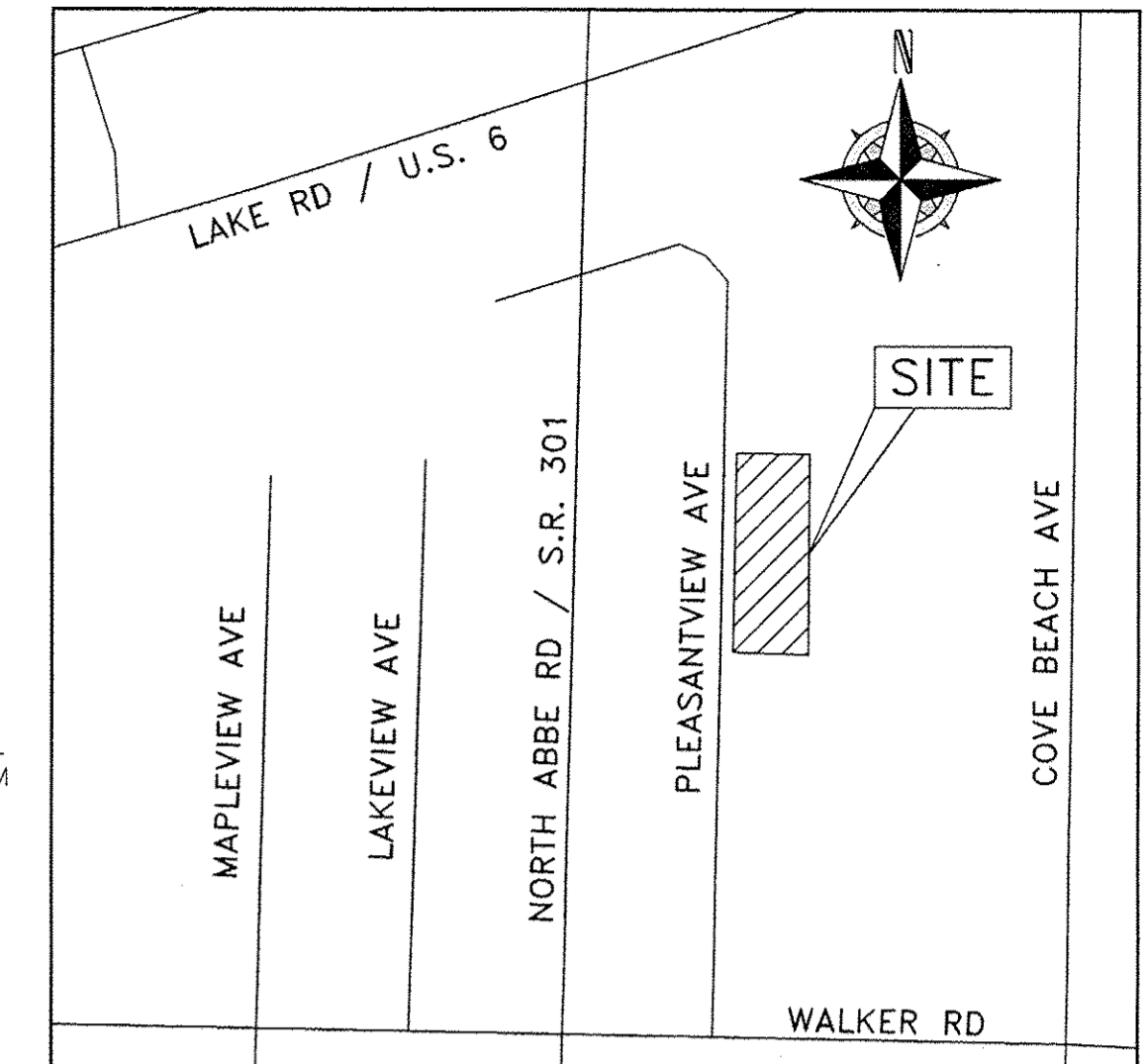
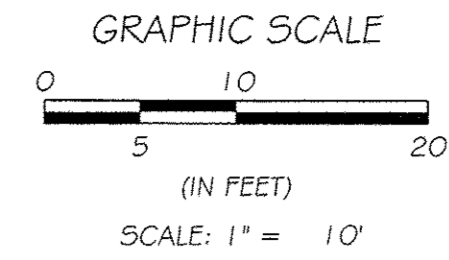
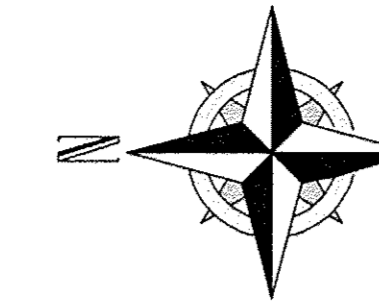
*Brent D. Anderson*  
BRENT D. ANDERSON  
REGISTERED PROFESSIONAL SURVEYOR  
11/23/16

### SHEET LIST

- CONDOMINIUM SURVEY VIEW..... 1
- ARCHITECTURAL FLOOR PLAN..... 2
- ARCHITECTURAL ELEVATION VIEW..... 3
- ARCHITECTURAL DETAILS & SECTIONS.... 4

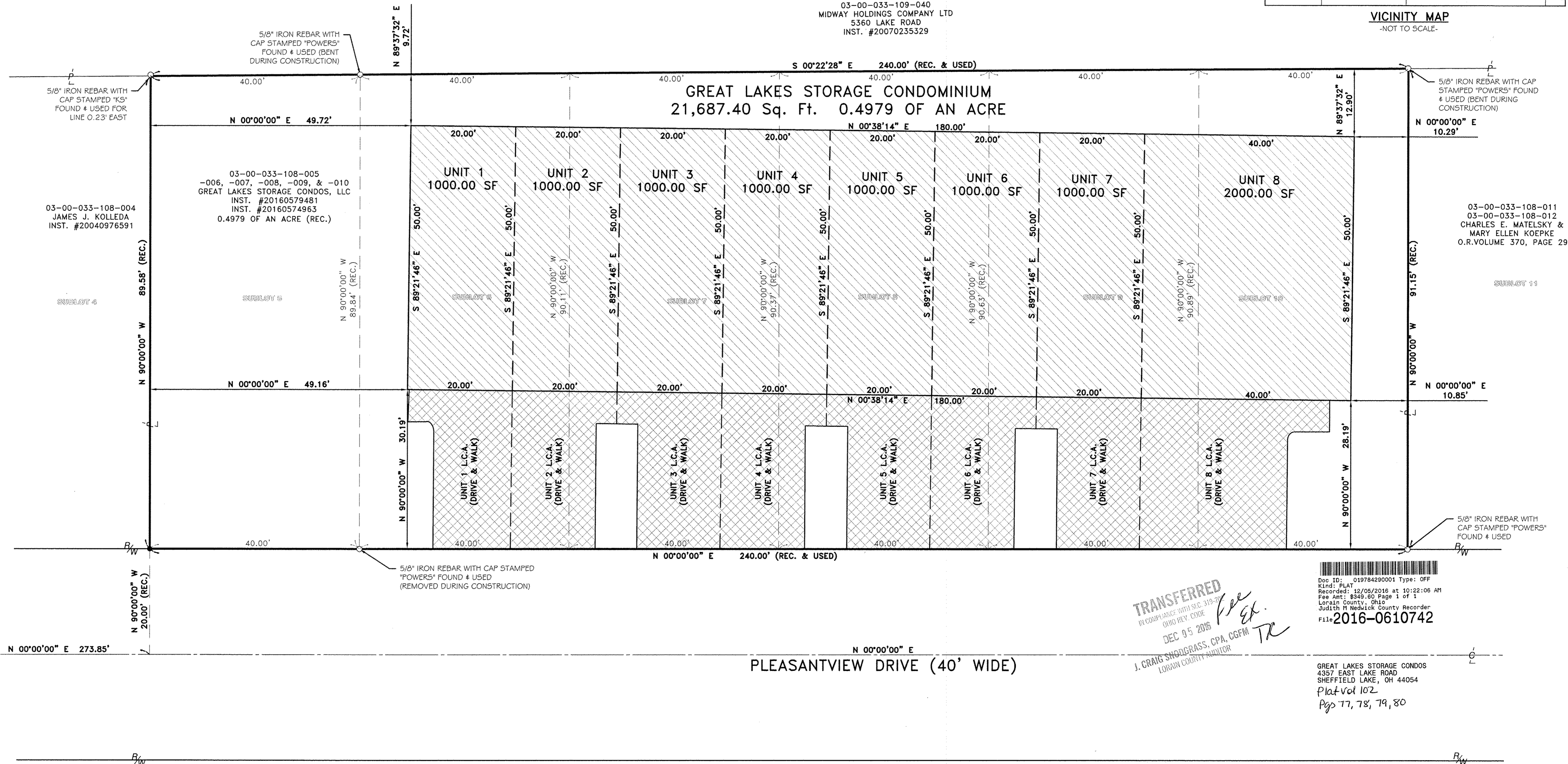
### LEGEND:

- IRON PIN/PIPE FOUND AS NOTED
- REBAR SET WITH CAP STAMPED "Rafter A Ltd" (LINE PINS = GREEN, CORNER PINS = YELLOW)
- L.C.A. LIMITED COMMON AREA



VICINITY MAP  
-NOT TO SCALE-

03-00-033-109-040  
MIDWAY HOLDINGS COMPANY LTD  
5360 LAKE ROAD  
INST. #20070235329



HAMTHORNE AVENUE (60' WIDE)

**TRANSFERRED**  
IN COMPLIANCE WITH SEC. 319.22  
OHIO REV. CODE  
DEC 9 5 2016  
J. CRAIG SHODGRASS, CPA, CGFM  
LORAIN COUNTY RECORDER

Doc ID: 019784290001 Type: OFF  
Kind: PLAT  
Recorded: 12/05/2016 at 10:22:06 AM  
Fee Amt: \$349.80 Page 1 of 1  
Lorain County, Ohio  
Judith H. Newick County Recorder  
FILE 2016-0610742

GREAT LAKES STORAGE CONDOS  
4357 EAST LAKE ROAD  
SHEFFIELD LAKE, OH 44054  
Plat Vol 102  
Pgs 77, 78, 79, 80

REV.	BY	DATE	DESCRIPTION
1	BDA	11-09-2016	ISSUE TO CLIENT
2	BDA	11-21-2016	REVISIONS PER TAX MAP REQUEST

<b>GREAT LAKES STORAGE CONDOMINIUM CONDOMINIUM SURVEY VIEW</b> SITUATED IN THE CITY OF SHEFFIELD LAKE, COUNTY OF LORAIN, STATE OF OHIO AND KNOWN AS BEING PART OF ORIGINAL SHEFFIELD TOWNSHIP LOT NUMBERS 33		<b>RAFTER A, LTD</b> LAND SURVEYING & ENGINEERING Office: 440-458-8294 Fax: 440-458-4483 www.RafterA.com 10980 LaGrange Road Elyria, Ohio 44035
GREAT LAKES STORAGE CONDOS LLC 4357 EAST LAKE ROAD SHEFFIELD LAKE, OHIO 44054		
DRAWN BY: BDA JOB No: 1697A-16	CHECKED BY: RAF SHEET 1 of 4	



DESIGN LOADS	
TRUSS DESIGN LOADS (FOR 4'-0" SPACING)	
TOP CHORD LL	25 P.S.F.
DL	10 P.S.F.
BOTTOM CHORD DL	3 P.S.F.
TOTAL LOAD	40 P.S.F.
FIRST FLOOR LIVE LOAD	125 PSF (PER OBC TABLE 1607.1)
ROOF LIVE LOAD	25 P.S.F. + DRIFTING
(SNOW LOAD)	
GROUND SNOW LOAD	PS = 20 PSF (NOT USED)
FLAT ROOF SNOW LOAD	FF = 18 PSF (NOT USED)
MINIMUM RAIN ON SNOW SURCHARGE	23 PSF (NOT USED)
SNOW EXPOSURE FACTOR $C_e$	= 1.0
SNOW IMPORTANCE $I$	= 1.0
THERMAL FACTOR $C_t$	= 1.0
BASIC WIND SPEED	90 MPH
WIND EXPOSURE CLASSIFICATION	EXPOSURE 'B'
WIND IMPORTANCE FACTOR	1.0
CLADDING WIND PRESSURES	13.4 PSF (INHARD) WINDWARD
	18.2 PSF (SUCTION) LEeward
SEISMIC USE GROUP	GROUP 1
SITE CLASS	D
BASIC SEISMIC FORCE RESISTING SYSTEM	BRACED FRAME
DESIGN CATEGORY	B
ANALYSIS PER	OBC 1613.5
DESIGN SOIL PRESSURE	2,000 P.S.F. (ASSUMED)

DRAWING INDEX	
A-1	CODE REVIEW, DRAWING INDEX, FLOOR PLAN, DESIGN LOADS, DOOR & FINISH SCHEDULE
A-2	BUILDING ELEVATIONS
A-3	WALL SECTION, RISER DIAGRAM, TYP UNIT ELECTRICAL PLAN, PLUMBING ISOMETRIC, WATER WATER PIPING DIAGRAM, ELEC. SYMBOL LEGEND

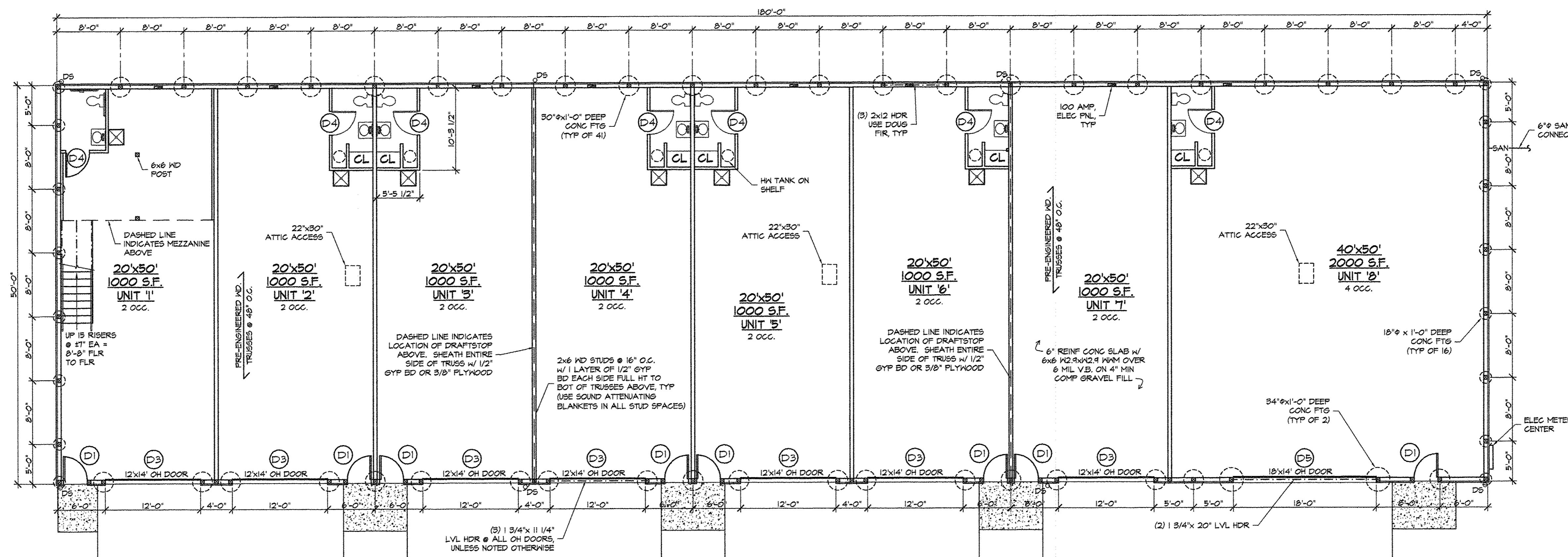
CODE REVIEW
USE GROUP : S-1
CONSTRUCTION TYPE : V B
BUILDING AREA : 9,000 S.F.
OCCUPANCY : 18 OCC.

DOOR SCHEDULE							
NO.	MATL	W.	H.	TH.	FRAME	HDW.	REMARKS
D1	STL	3'-0"	6'-8"	1 3/4"	HM	LOCKSET CLOSER	INSUL. & PANEL STL. DOOR TO BE READILY OPENABLE FROM EGRESS SIDE W/O KEY OR SPECIAL KNOWLEDGE/
D2	NOT USED						
D3	STL	12'-0"	14'-0"	1 5/8"	-	-	INSUL. OH DOOR EQUIPPED W/ AUTOMATIC OPENER
D4	WD	3'-0"	6'-8"	1 3/4"	WD	PRIVACY	H.C. ACCESSIBLE LEVER HANDLES.
D5	STL	18'-0"	14'-0"	1 5/8"	-	-	INSUL. OH DOOR EQUIPPED W/ AUTOMATIC OPENER

FINISH SCHEDULE									
NO.	ROOM NAME	BASE	FLOOR	WALLS			CEILING	HST.	REMARKS
				N.	E.	S.			
	TYP UNIT	-	CONC.	GYP BD PAINT			24 GA MTL	16'-0"	CONC FLOOR W/ SEALER
	UNISEX TOILET	6" VINYL	VCT	GYP BD PAINT			TEXTURED GYP BD	8'-0"	

FOUNDATION LEGEND	
	18"Ø x 1'-0" DEEP CONG FTG (16 REQ'D)
	30"Ø x 1'-0" DEEP CONG FTG (41 REQ'D)
	34"Ø x 1'-0" DEEP CONG FTG (2 REQ'D)

**FOUNDATION NOTES**  
 CONCRETE IN FOUNDATIONS SHALL DEVELOP A COMPRESSIVE STRENGTH OF 3,000 PSI IN 28 DAYS. ALL OTHER CONCRETE SHALL BE 4,000 PSI IN 28 DAYS. EXTERIOR CONCRETE TO BE 4,000 PSI IN 28 DAYS WITH AIR ENTRAINMENT TO MEET ASTM C 260, SPECIFICALLY 6% AIR ENTRAINMENT ±1%.



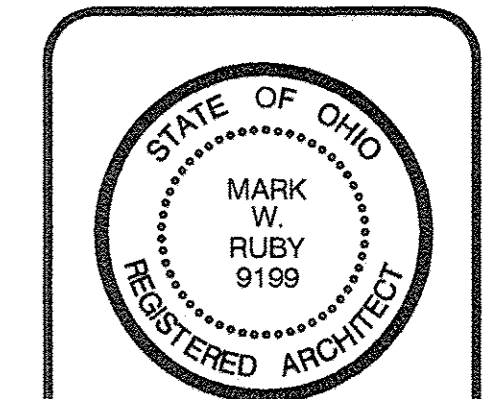
**FLOOR PLAN**  
 SCALE: 1/8" = 1'-0"

I CERTIFY THAT WITH THE EXCEPTION OF MINOR ARCHITECTURAL MODIFICATIONS MADE DURING CONSTRUCTION, THE DRAWINGS REPRESENT THE STRUCTURES AS BUILT.  
*Mark W. Ruby* 11/23/16  
 Mark W. Ruby, Architect #9199

REVISIONS	BY

**MARK W. RUBY**  
 ARCHITECT  
 198 NORTH LEAVITT ROAD, SUITE 201  
 AMHERST, OH, 44001  
 (440) 986-2091

TITLE  
 NEW LOCATION FOR  
**GREAT LAKES STORAGE CONDOMINIUM**  
 PLEASANTVIEW DRIVE  
 SHEFFIELD LAKE, OH

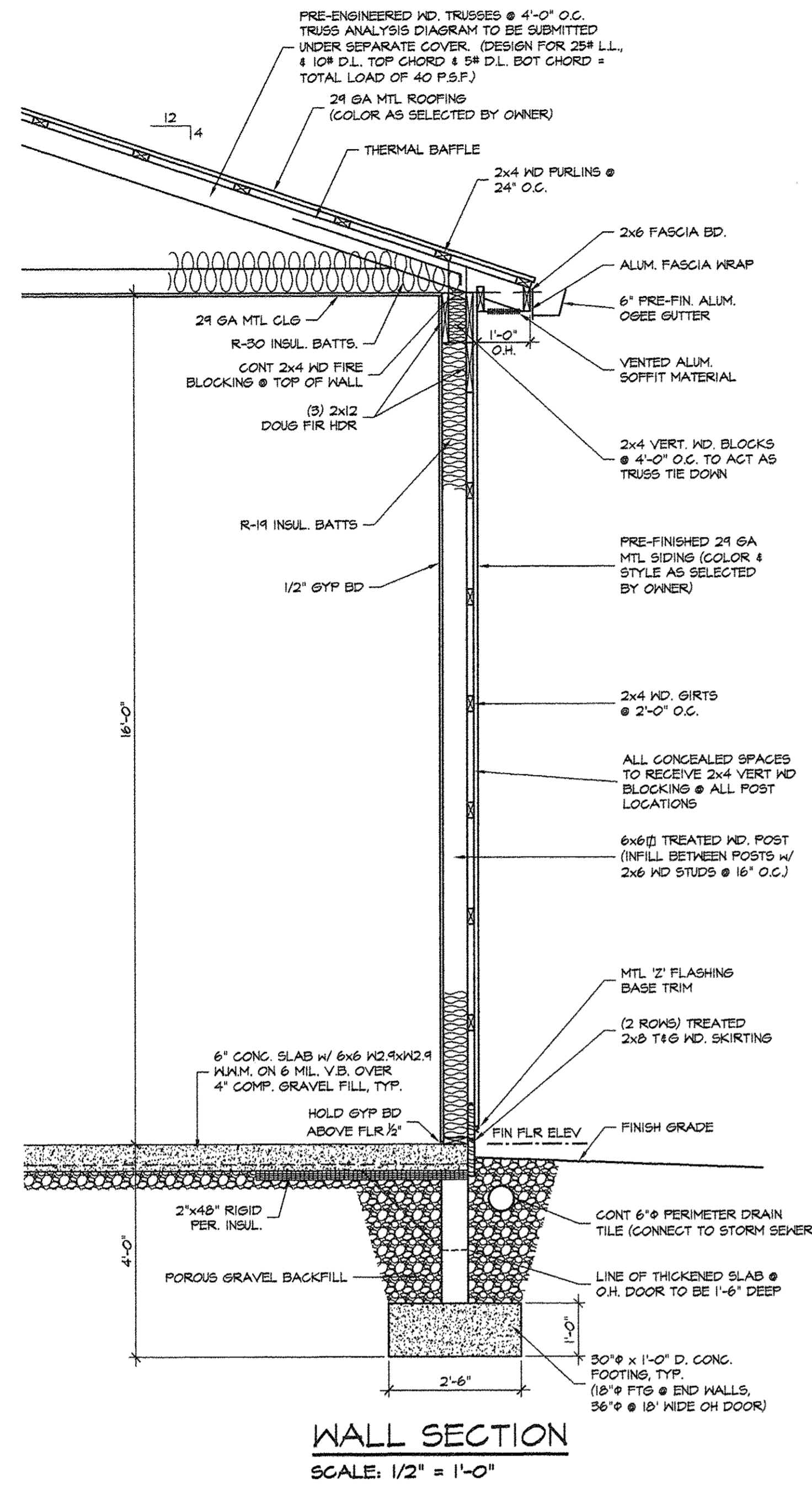


DATE 11/2/16  
 PROJ. 1601  
 SHEET

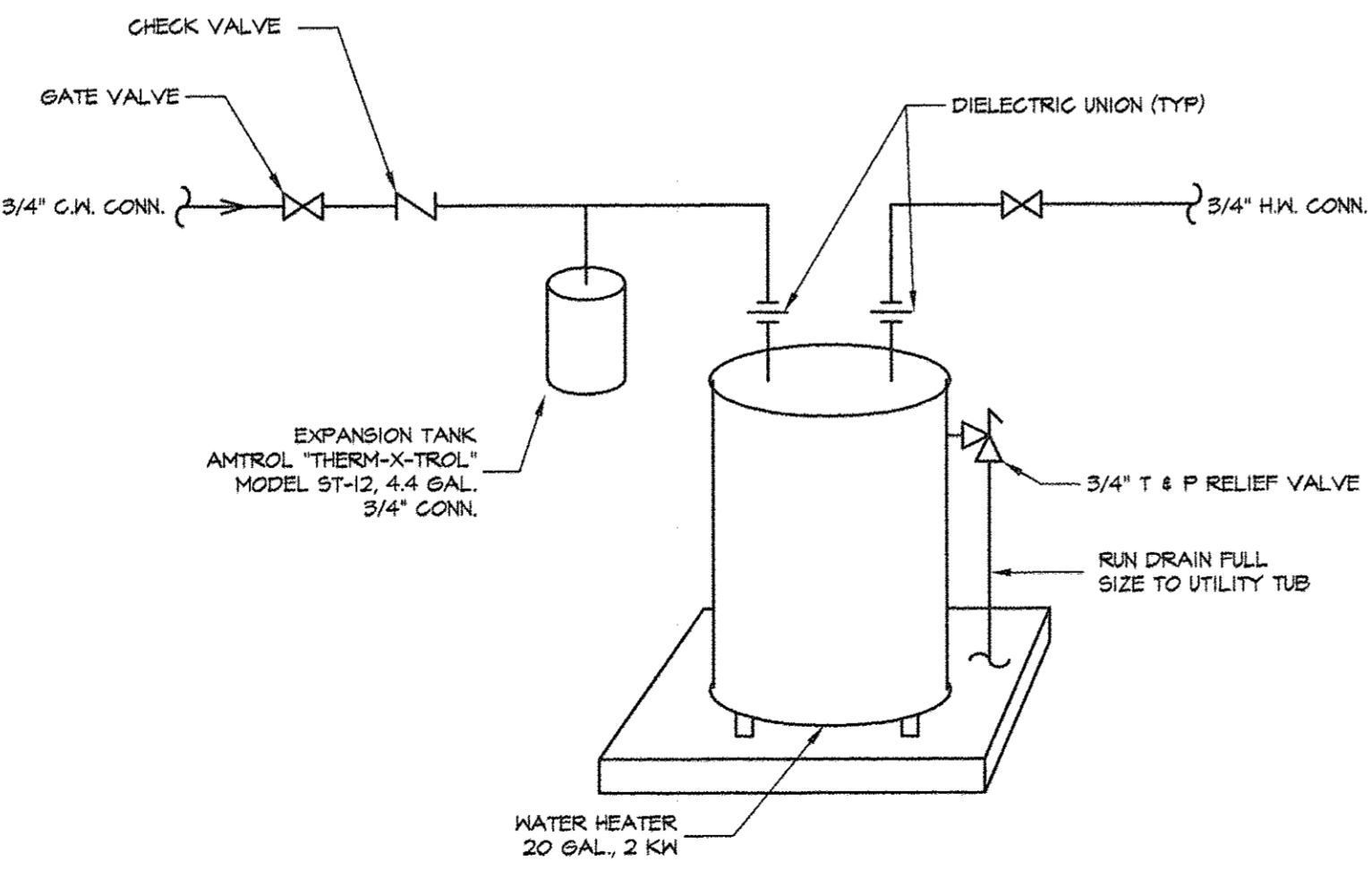






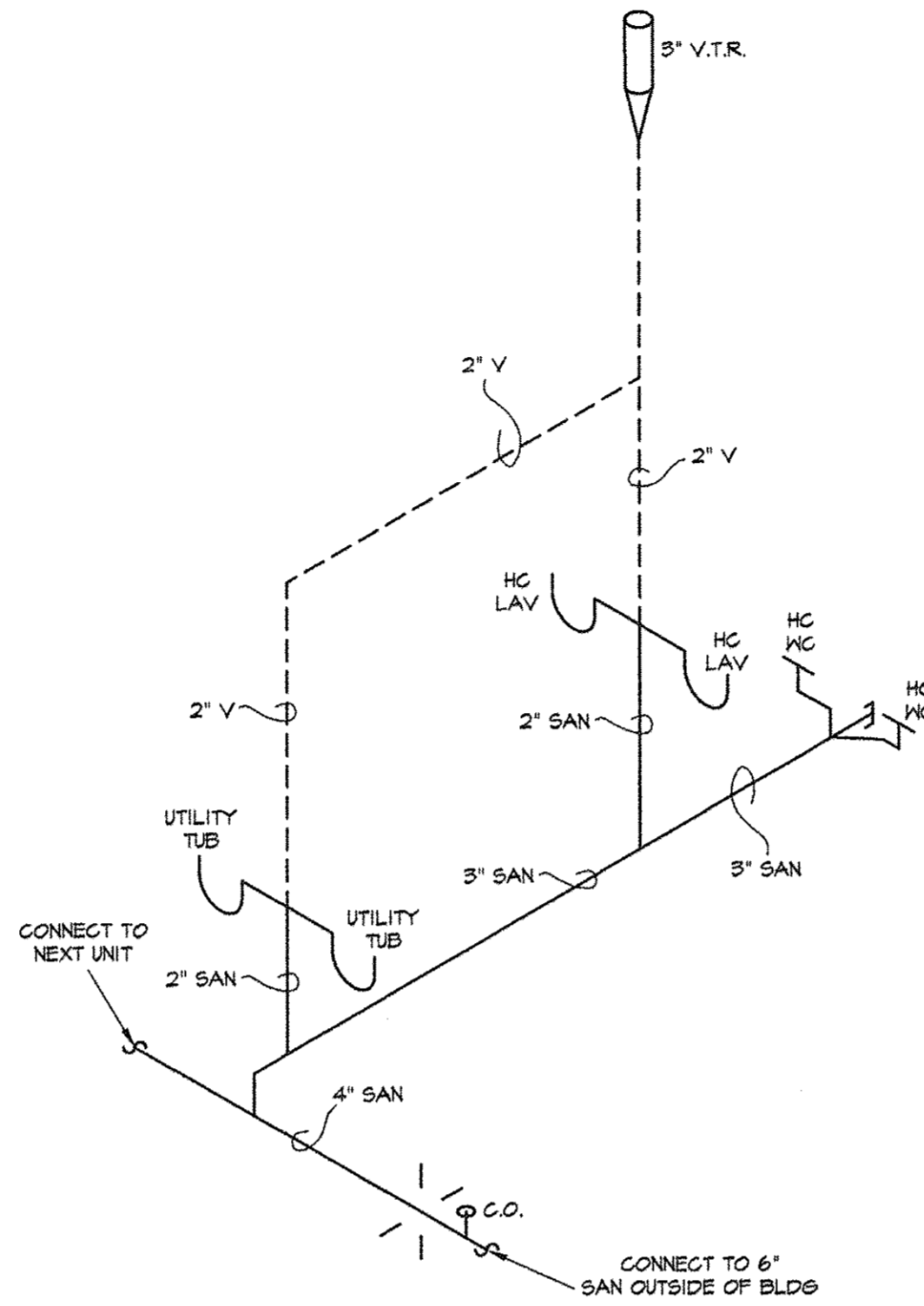


**WALL SECTION**  
SCALE: 1/2" = 1'-0"



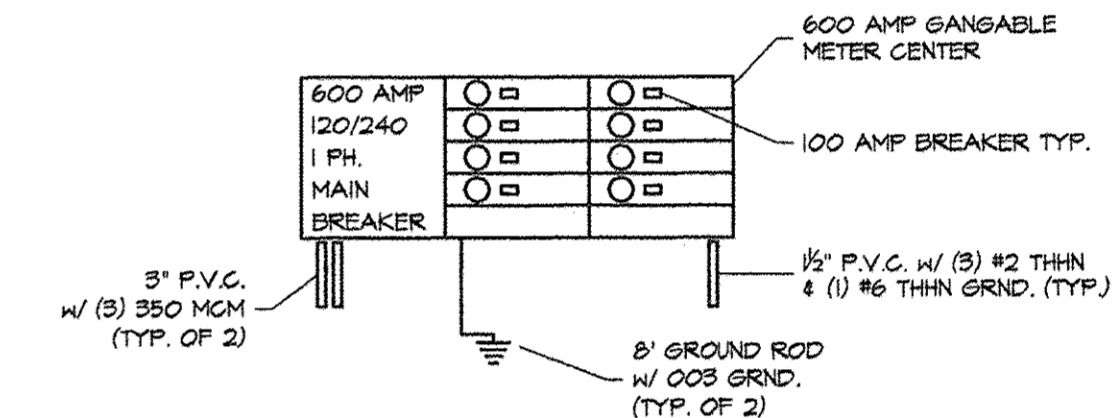
**WATER HEATER PIPING DIAGRAM**  
NO SCALE

WH1 WATER HEATER - ELECTRIC  
A.O. SMITH MODEL DEL-20, STATE OR LOCHINVAR 20 GAL. STORAGE, 2 KW UPPER/LOWER ELEMENT, 208V/110, 1 GPH RECOVERY @ 40' F RISE. COMPLETE WITH PRESSURE AND TEMPERATURE RELIEF VALVE, RUN DRAIN FULL SIZE FROM RELIEF VALVE TO UTILITY TUB. PROVIDE EXPANSION TANK AS REQUIRED PER CODES. LOCATE WATER HEATER ON PLATFORM.

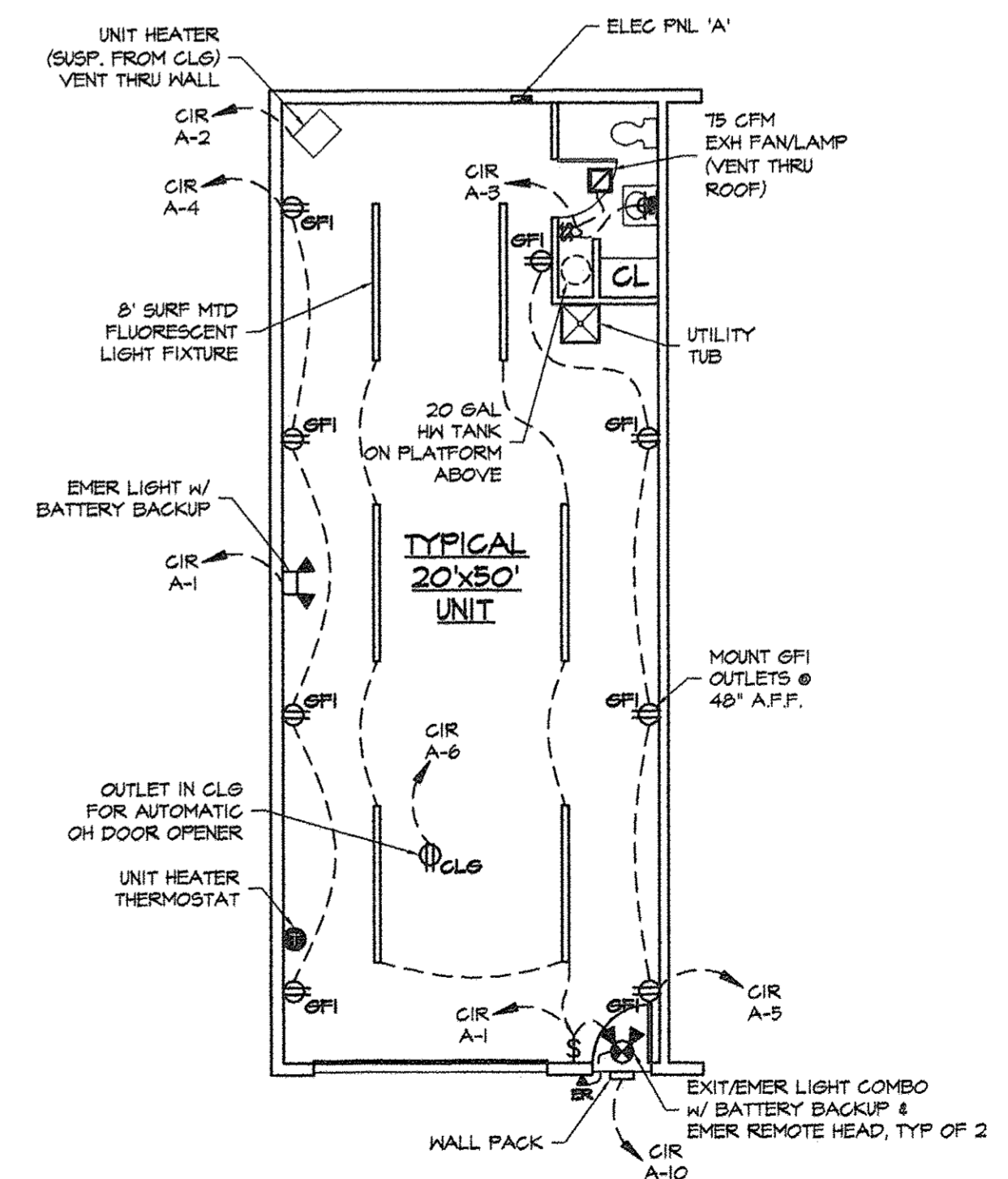


**TYP. UNIT PLUMBING ISOMETRIC**  
SCALE: N.T.S.

ELECTRICAL SYMBOL LEGEND	
SYMBOL	DESCRIPTION
[Symbol]	LIGHTING FIXTURE - FLUORESCENT 8' SURFACE MOUNT
[Symbol]	WALL MOUNTED HALIDE FIXTURE
[Symbol]	BATTERY PACK EMER/ EXIT COMBO UNIT
[Symbol]	BATTERY PACK EMERGENCY LIGHTING FIXTURE
[Symbol]	20 AMP 120/277 VOLT SINGLE POLE TOGGLE SWITCH
[Symbol]	20 AMP 120 VOLT 2 POLE 3 WIRE GROUND FAULT CIRCUIT INTERRUPTING RECEPTACLE
[Symbol]	20 AMP 120 VOLT 2 POLE 3 WIRE GROUND FAULT CIRCUIT INTERRUPTING RECEPTACLE IN CLG
[Symbol]	JUNCTION BOX SIZED AS REQUIRED
[Symbol]	THERMOSTAT
[Symbol]	EXHAUST FAN, HORSEPOWER & VOLTAGE AS NOTED
[Symbol]	PANELBOARD - SEE SCHEDULES
[Symbol]	DISCONNECT SWITCH, AMPACITY AS NOTED WP INDICATES NEMA SR UNLESS NOTED
[Symbol]	SURFACE MOUNTED INCANDESCENT FIXTURE
[Symbol]	AFP ABOVE FINISHED FLOOR
[Symbol]	EMERGENCY REMOTE HEAD



**RISER DIAGRAM**  
SCALE: N.T.S.



**TYP. UNIT ELECTRICAL/MECHANICAL PLAN**  
SCALE: 1/8" = 1'-0"



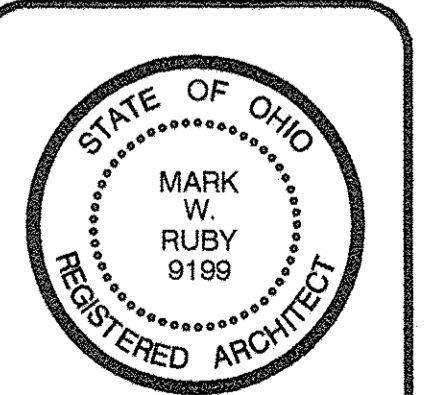
I CERTIFY THAT WITH THE EXCEPTION OF MINOR ARCHITECTURAL MODIFICATIONS MADE DURING CONSTRUCTION, THE DRAWINGS REPRESENT THE STRUCTURES AS BUILT.  
*Mark W. Ruby* 11/23/16  
Mark W. Ruby, Architect #9199

PANEL 'A' (TYP.)					
SERVICE: 100A M.B., 120/240V 1Ø 3Ø CIRC. M.L.O.					
LOCATION: EAST WALL					
BRANCH CIRCUIT	BREAKER	CKT. NO.	CKT. NO.	BREAKER	BRANCH CIRCUIT
LIGHTS	1P 20 AMP	1	2	1P 20 AMP	GAS UNIT HEATER
BATHROOM	1P 20 AMP	3	4	1P 20 AMP	OUTLETS
OUTLETS	1P 20 AMP	5	6	1P 20 AMP	O.H. DOOR OPENER
BATHROOM HEATER	2P 20 AMP	7	8	1P 20 AMP	HOT WATER TANK
		9	10	1P 20 AMP	WALL PACKS
SPARE	1P 20 AMP	11	12	1P 20 AMP	SPARE
SPACE		13	14		SPACE
SPACE		15	16		SPACE
SPACE		17	18		SPACE
SPACE		19	20		SPACE
SPACE		21	22		SPACE
SPACE		23	24		SPACE
SPACE		25	26		SPACE
SPACE		27	28		SPACE
SPACE		29	30		SPACE

REVISIONS	BY

**MARK W. RUBY**  
ARCHITECT  
199 NORTH LEAVITT ROAD, SUITE 201  
AMHERST, OH, 44001  
(440) 986-2091

NEW LOCATION FOR  
**GREAT LAKES STORAGE CONDOMINIUM**  
PLEASANTVIEW DRIVE  
SHEFFIELD LAKE, OH



DATE 11/2/16  
PROJ. 1601  
SHEET