

NO.	DATE	REVISIONS	BY

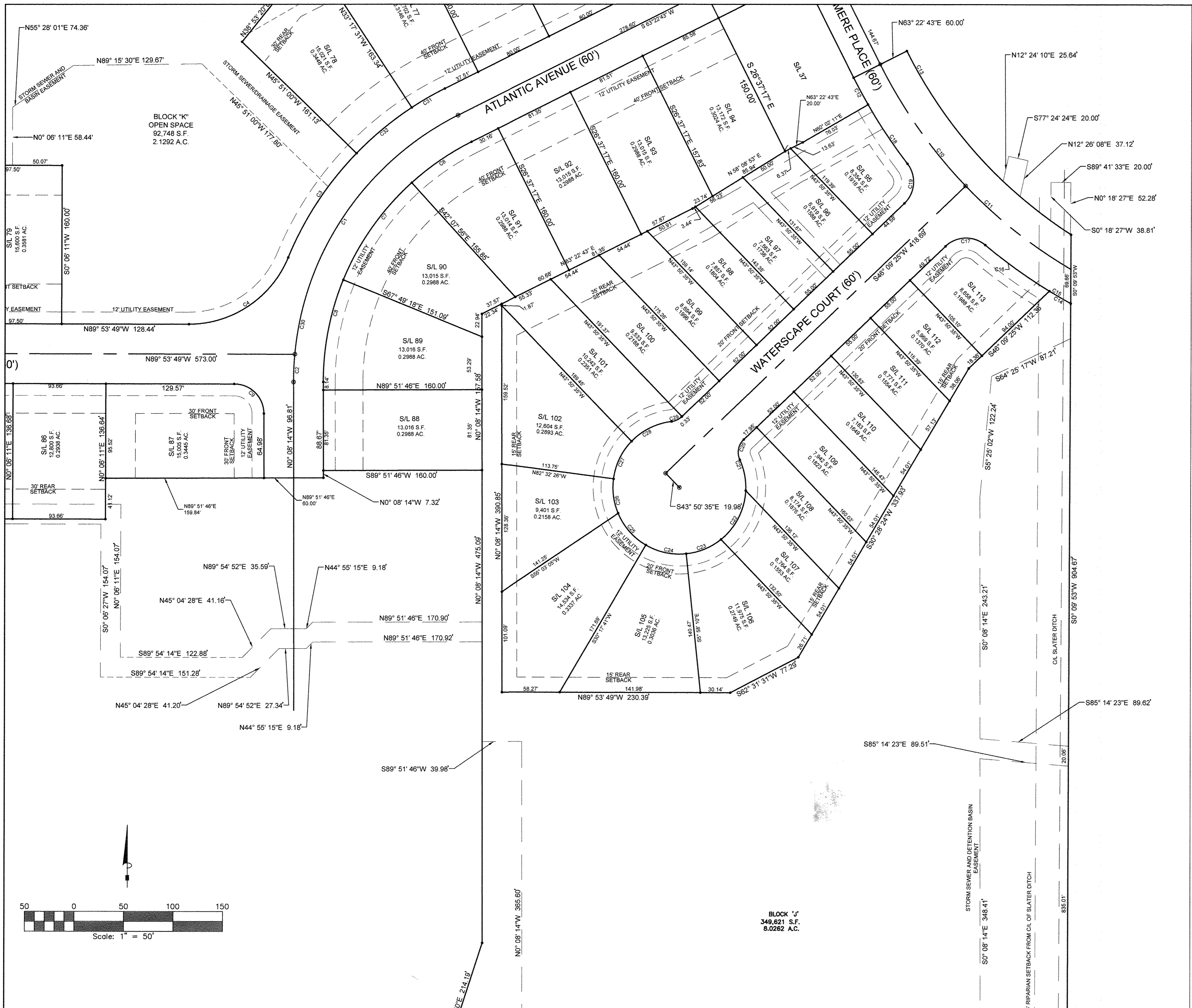
SUHAIL A/E
 18405 May Court, Chagrin Falls, Ohio 44023
 Ph.: (800) 660-4291 Fax: (800) 660-7831

DESIGNED BY: FA
 CHECKED BY: HS
 REVIEWED BY: EMS
 DATE: JULY 18, 2016
 SCALE: AS NOTED

HAMPTON PLACE
 SUBDIVISION 3
 PLAT

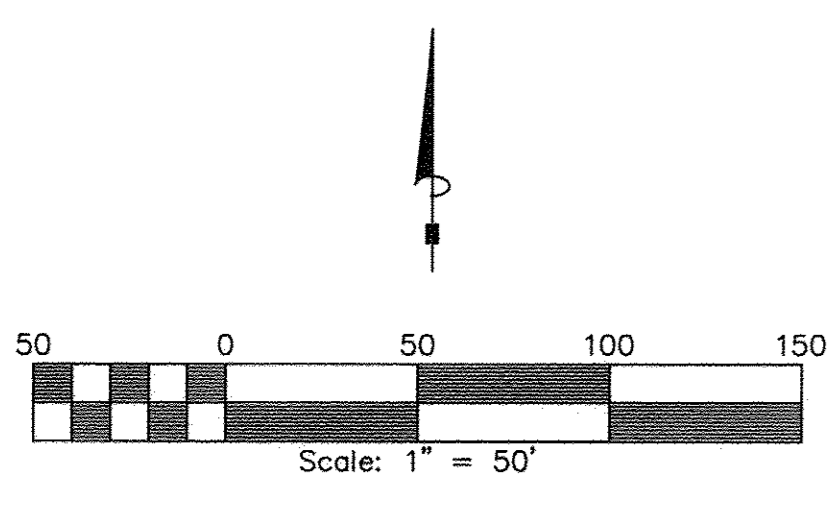
PREPARED FOR
 VALORE PROPERTIES, INC.
 23550 CENTER RIDGE ROAD
 WESTLAKE, OHIO 44145
 PH. NO. (440) 331 1900
 FAX. NO. (440) 331 3140

S&S JOB NO. 20160136
 SHEET NO. 2 OF 5



Curve Table						
Curve #	Length	Radius	Delta	Chord Direction	Chord Length	Tangent
C1	304.62'	300.00'	58° 10' 40"	S34° 17' 23"W	291.70'	166.90'
C2	27.95'	300.00'	5° 20' 17"	S2° 31' 55"W	27.94'	13.99'
C3	126.51'	330.00'	21° 57' 55"	N33° 10' 03"E	125.74'	64.04'
C4	128.02'	108.00'	67° 55' 06"	N56° 08' 38"E	120.66'	72.73'
C6	73.09'	270.00'	15° 30' 37"	S55° 37' 25"W	72.87'	36.77'
C7	121.06'	270.00'	25° 41' 23"	S35° 01' 25"W	120.05'	61.56'
C8	105.16'	270.00'	22° 18' 58"	S11° 01' 15"W	104.50'	53.26'
C9	47.00'	30.00'	89° 45' 35"	N45° 01' 01"W	42.34'	29.87'
C10	150.27'	500.00'	17° 13' 13"	S35° 13' 24"E	149.71'	75.71'
C11	135.93'	500.00'	15° 34' 34"	S51° 37' 52"E	135.51'	68.38'
C12	30.92'	530.00'	3° 20' 32"	N28° 17' 32"W	30.91'	15.46'
C13	251.20'	470.00'	30° 37' 20"	S41° 55' 57"E	248.22'	128.68'
C14	24.92'	530.00'	2° 41' 40"	N59° 57' 28"W	24.92'	12.46'
C15	104.63'	530.00'	11° 18' 41"	S55° 38' 58"E	104.46'	52.49'
C16	79.71'	530.00'	8° 37' 01"	S54° 18' 08"E	79.63'	39.93'
C17	43.90'	30.00'	83° 50' 57"	S88° 04' 54"W	40.09'	26.94'
C18	71.48'	530.00'	7° 43' 38"	S33° 49' 38"E	71.43'	35.79'
C19	43.90'	30.00'	83° 50' 47"	N4° 13' 56"E	40.09'	26.94'
C20	22.22'	18.00'	70° 44' 10"	S10° 46' 20"W	20.84'	12.78'
C21	31.76'	67.00'	27° 09' 43"	N11° 00' 53"W	31.47'	16.19'

Curve Table						
Curve #	Length	Radius	Delta	Chord Direction	Chord Length	Tangent
C22	56.78'	67.00'	48° 33' 32"	N26° 50' 45"E	55.10'	30.22'
C23	38.48'	67.00'	32° 54' 19"	N67° 34' 41"E	37.95'	19.79'
C24	42.41'	67.00'	36° 15' 51"	S77° 50' 14"E	41.70'	21.94'
C25	43.10'	67.00'	36° 51' 22"	S41° 16' 38"E	42.36'	22.32'
C26	35.44'	67.00'	30° 18' 31"	S7° 41' 41"E	35.03'	18.15'
C27	42.47'	67.00'	36° 18' 55"	S25° 37' 01"W	41.78'	21.97'
C28	45.93'	67.00'	39° 16' 29"	S63° 24' 43"W	45.03'	23.91'
C29	11.59'	18.00'	36° 53' 32"	N64° 36' 11"E	11.39'	6.00'
C30	332.57'	300.00'	63° 30' 57"	S31° 37' 15"W	315.80'	185.70'
C31	38.42'	330.00'	6° 40' 14"	S60° 02' 36"W	38.40'	19.23'
C32	72.33'	330.00'	12° 33' 29"	S50° 25' 45"W	72.18'	36.31'



NO.	DATE	REVISIONS	BY

SUHAIL A/E
 18405 May Court, Chagrin Falls, Ohio 44023
 Ph.: (800) 660-4291 Fax: (800) 660-7831

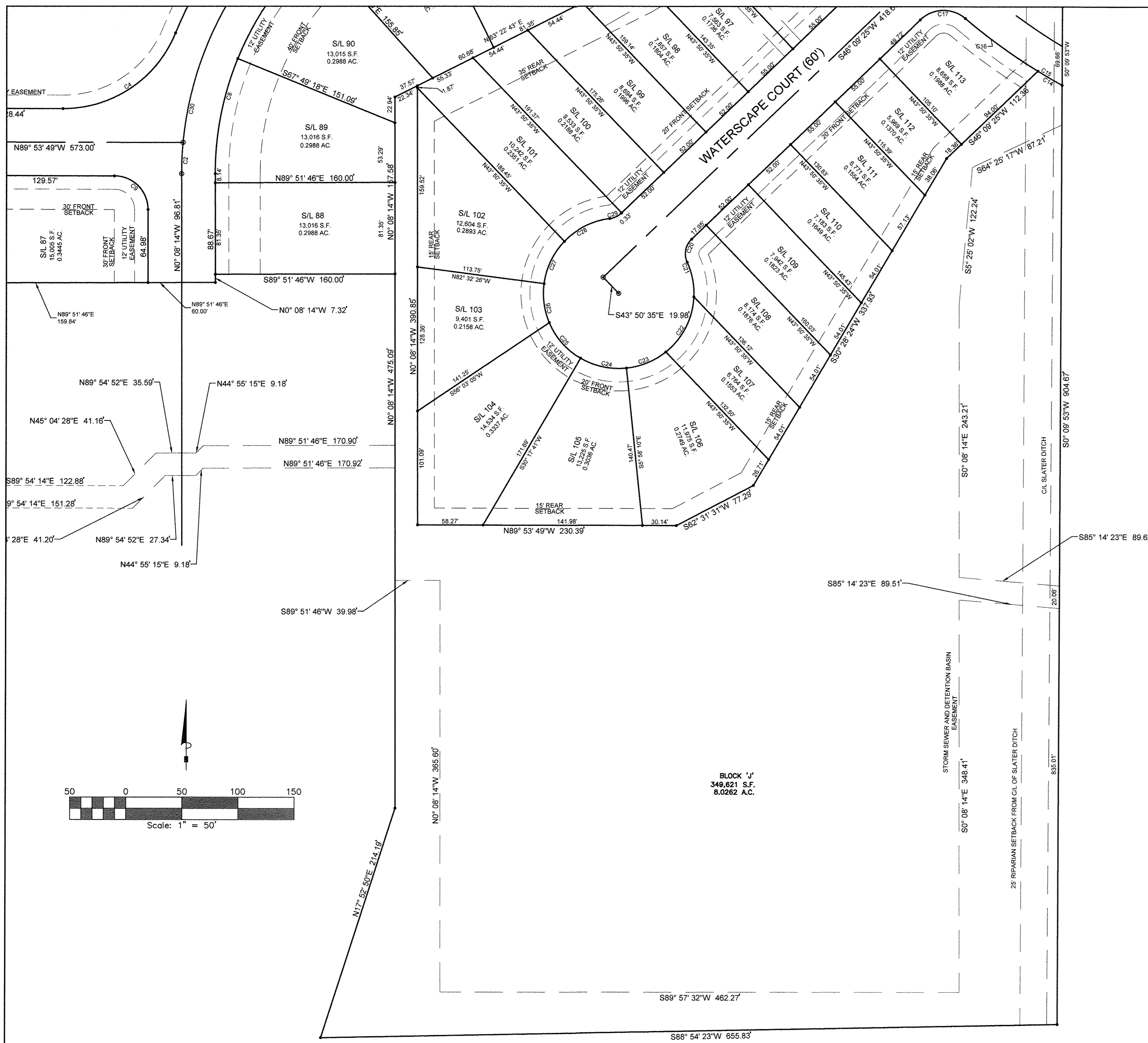
DESIGNED BY FA
 CHECKED BY HS
 REVIEWED BY EMS
 DATE JULY 18, 2016
 SCALE AS NOTED

**HAMPTON PLACE
 SUBDIVISION 3**

PLAT

PREPARED FOR
 VALORE PROPERTIES, INC.
 23550 CENTER RIDGE ROAD
 WESTLAKE, OHIO 44145
 PH. NO. (440) 331 1900
 FAX. NO. (440) 331-3140

S&S JOB NO. **20160136** SHEET NO. **3 OF 5**



Curve Table						
Curve #	Length	Radius	Delta	Chord Direction	Chord Length	Tangent
C1	304.62'	300.00'	58° 10' 40"	S34° 17' 23"W	291.70'	166.90'
C2	27.95'	300.00'	5° 20' 17"	S2° 31' 55"W	27.94'	13.99'
C3	126.51'	330.00'	21° 57' 55"	N33° 10' 03"E	125.74'	64.04'
C4	128.02'	108.00'	67° 55' 06"	N56° 08' 38"E	120.66'	72.73'
C6	73.09'	270.00'	15° 30' 37"	S55° 37' 25"W	72.87'	36.77'
C7	121.06'	270.00'	25° 41' 23"	S35° 01' 25"W	120.05'	61.56'
C8	105.16'	270.00'	22° 18' 58"	S11° 01' 15"W	104.50'	53.26'
C9	47.00'	30.00'	89° 45' 35"	N45° 01' 01"W	42.34'	29.87'
C10	150.27'	500.00'	17° 13' 13"	S35° 13' 24"E	149.71'	75.71'
C11	135.93'	500.00'	15° 34' 34"	S51° 37' 52"E	135.51'	68.38'
C12	30.92'	530.00'	3° 20' 32"	N28° 17' 32"W	30.91'	15.46'
C13	251.20'	470.00'	30° 37' 20"	S41° 55' 57"E	248.22'	128.68'
C14	24.92'	530.00'	2° 41' 40"	N59° 57' 29"W	24.92'	12.46'
C15	104.63'	530.00'	11° 18' 41"	S55° 38' 58"E	104.46'	52.49'
C16	79.71'	530.00'	8° 37' 01"	S54° 18' 08"E	79.63'	39.93'
C17	43.90'	30.00'	83° 50' 57"	S88° 04' 54"W	40.09'	26.94'
C18	71.48'	530.00'	7° 43' 38"	S33° 49' 38"E	71.43'	35.79'
C19	43.90'	30.00'	83° 50' 47"	N4° 13' 56"E	40.09'	26.94'
C20	22.22'	18.00'	70° 44' 10"	S10° 46' 20"W	20.84'	12.78'
C21	31.76'	67.00'	27° 09' 43"	N11° 00' 53"W	31.47'	16.19'

Curve Table						
Curve #	Length	Radius	Delta	Chord Direction	Chord Length	Tangent
C22	56.78'	67.00'	48° 33' 32"	N26° 50' 45"E	55.10'	30.22'
C23	38.48'	67.00'	32° 54' 19"	N67° 34' 41"E	37.95'	19.79'
C24	42.41'	67.00'	36° 15' 51"	S77° 50' 14"E	41.70'	21.94'
C25	43.10'	67.00'	36° 51' 22"	S41° 16' 38"E	42.36'	22.32'
C26	35.44'	67.00'	30° 18' 31"	S7° 41' 41"E	35.03'	18.15'
C27	42.47'	67.00'	36° 18' 55"	S25° 37' 01"W	41.76'	21.97'
C28	45.93'	67.00'	39° 16' 29"	S63° 24' 43"W	45.03'	23.91'
C29	11.59'	18.00'	36° 53' 32"	N64° 36' 11"E	11.39'	6.00'
C30	332.57'	300.00'	63° 30' 57"	S31° 37' 15"W	315.80'	185.70'
C31	38.42'	330.00'	6° 40' 14"	S60° 02' 36"W	38.40'	19.23'
C32	72.33'	330.00'	12° 33' 29"	S50° 25' 45"W	72.18'	36.31'

NO.	DATE	REVISIONS	BY

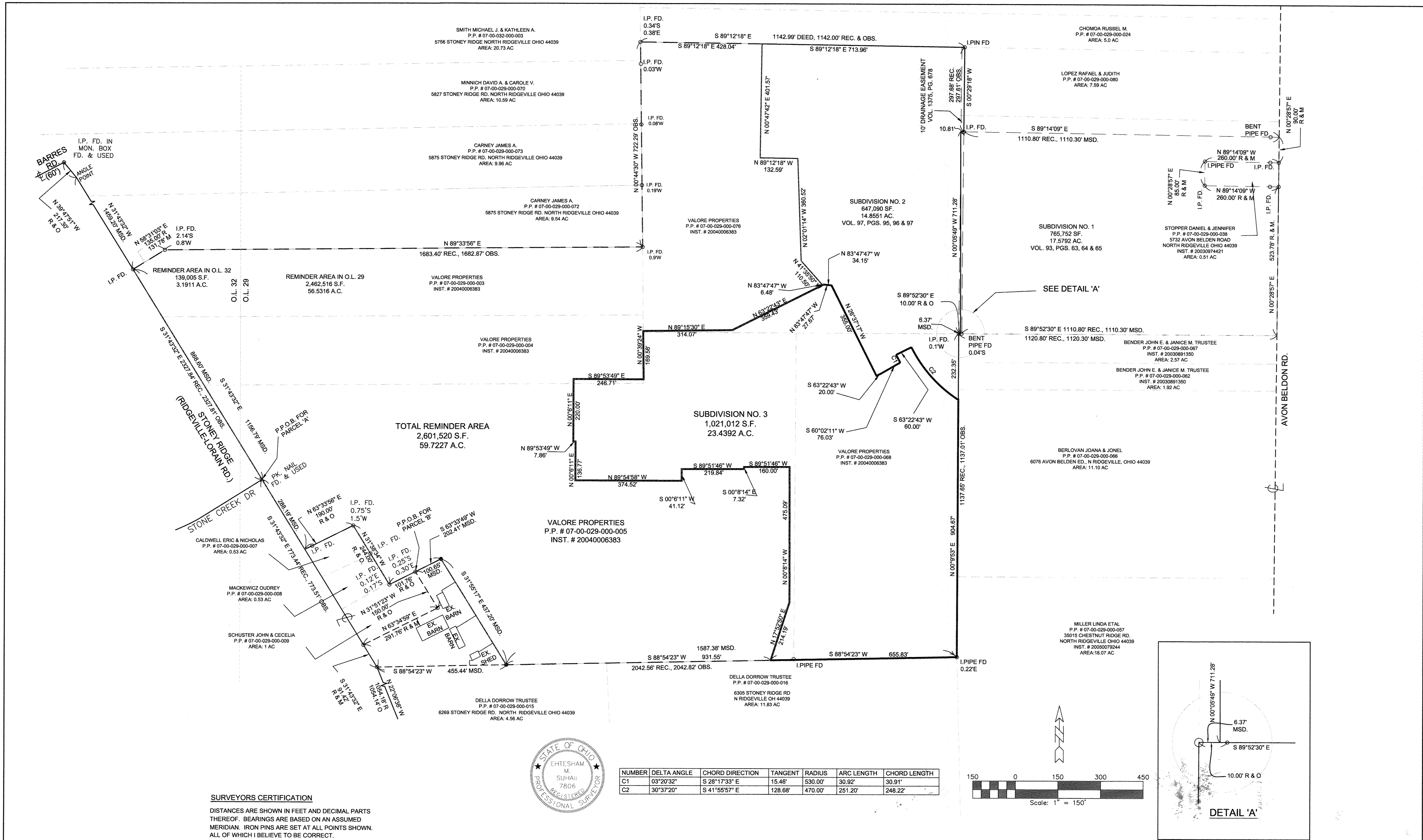
SUHAIL A/E
 18405 May Court, Chagrin Falls, Ohio 44023
 Ph.: (800) 660-4291 Fax: (800) 660-7831

DESIGNED BY: FA
 CHECKED BY: HS
 REVIEWED BY: EMS
 DATE: JULY 18, 2016
 SCALE: AS NOTED

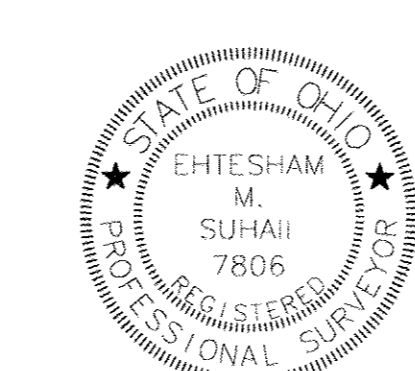
HAMPTON PLACE
 SUBDIVISION 3
 PLAT

PREPARED FOR
 VALORE PROPERTIES, INC.
 23550 CENTER RIDGE ROAD
 WESTLAKE, OHIO 44145
 PH. NO. (440) 331-1900
 FAX. NO. (440) 331-3140

S&S JOB NO. 20160136
 SHEET NO. 4 OF 5

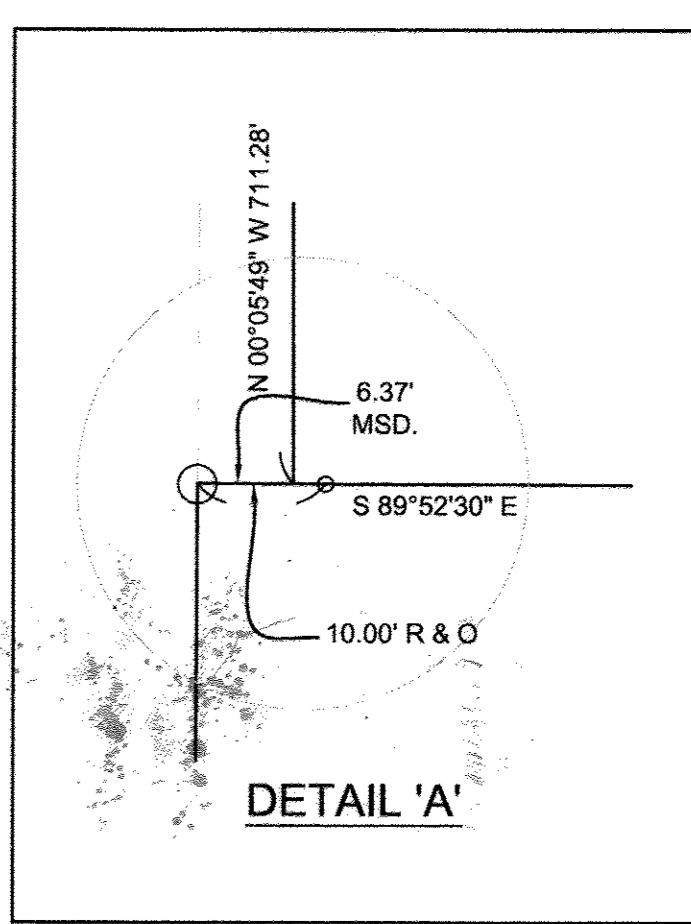
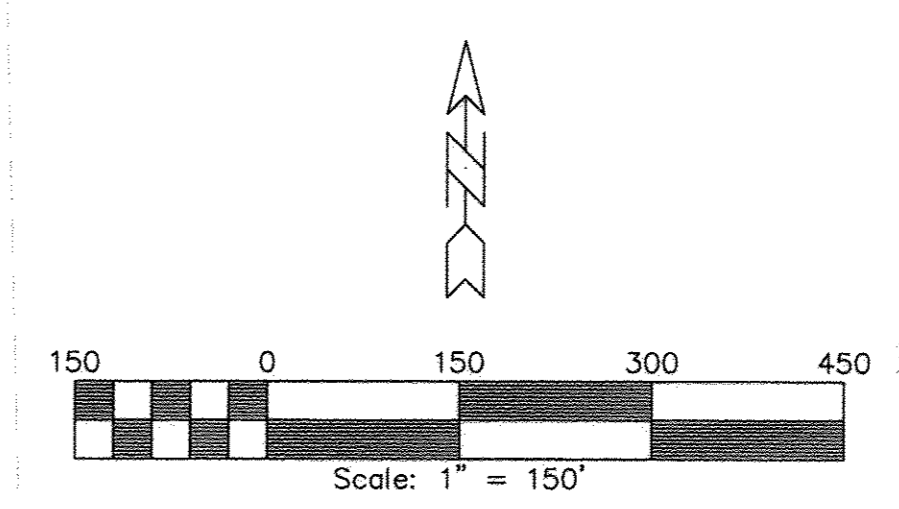


SURVEYORS CERTIFICATION
 DISTANCES ARE SHOWN IN FEET AND DECIMAL PARTS THEREOF. BEARINGS ARE BASED ON AN ASSUMED MERIDIAN. IRON PINS ARE SET AT ALL POINTS SHOWN, ALL OF WHICH I BELIEVE TO BE CORRECT.



EHTESHAM M. SUHAIL, P.S. 7806

NUMBER	DELTA ANGLE	CHORD DIRECTION	TANGENT	RADIUS	ARC LENGTH	CHORD LENGTH
C1	03°20'32"	S 28°17'33" E	15.46'	530.00'	30.92'	30.91'
C2	30°37'20"	S 41°55'57" E	128.68'	470.00'	251.20'	248.22'



NO.	DATE	REVISIONS	BY

SUHAIL A/E
 18405 May Court, Chagrin Falls, Ohio 44023
 Ph.: (800) 660-4291 Fax: (800) 660-7831

DESIGNED BY: FA
 CHECKED BY: HS
 REVIEWED BY: EMS
 DATE: JULY 18, 2016
 SCALE: AS NOTED

HAMPTON PLACE
 REMAINDER AREA
EXHIBIT 'A'

PREPARED FOR
 VALORE PROPERTIES, INC
 23550 CENTER RIDGE ROAD
 WESTLAK, OHIO 44145
 PH. NO. (440) 331-1900
 FAX. NO. (440) 331-3140

S&S JOB NO. 20160136
 SHEET NO. 5 OF 5

RECEIVED SEP 23 2016