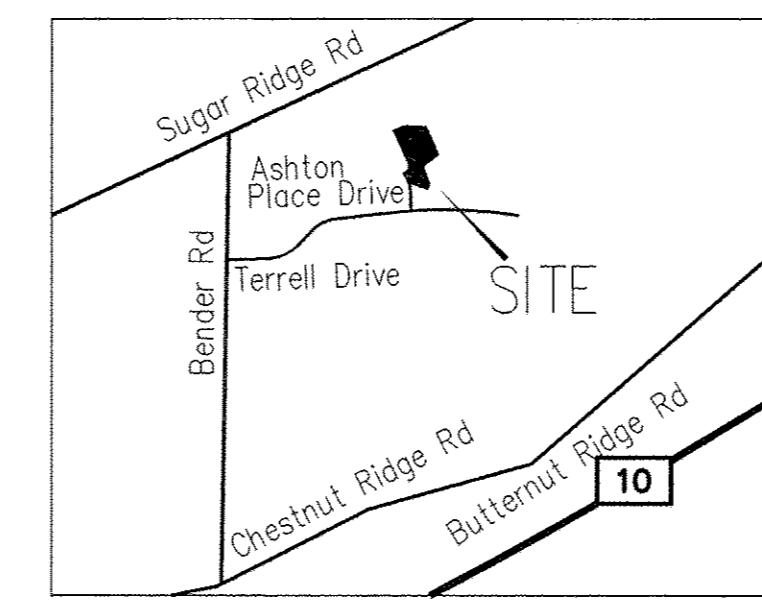
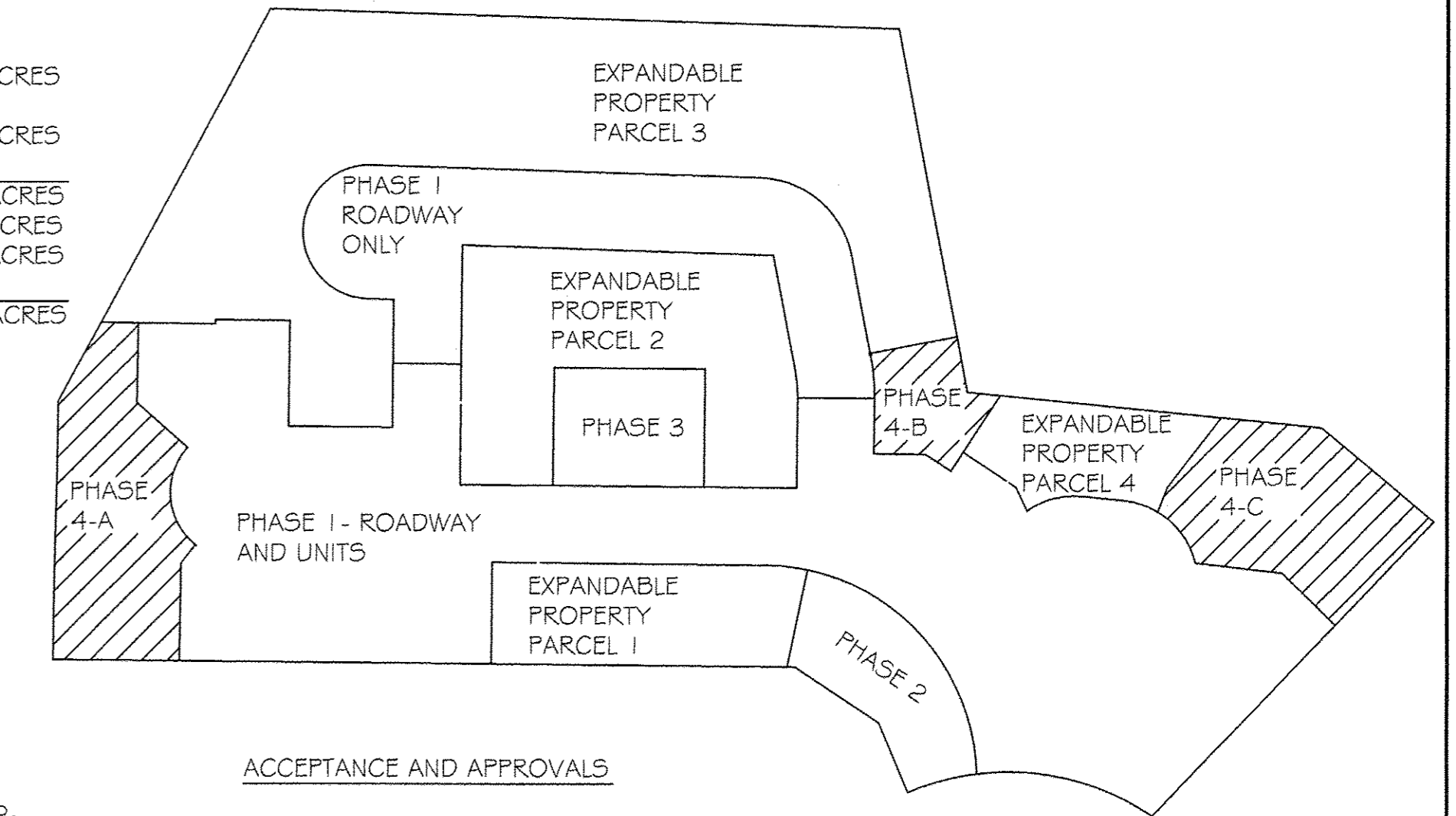


THIRD AMENDMENT TO DECLARATION OF RE-ESTABLISHED CONDOMINIUM THE VILLAGE AT ASHTON PLACE CONDOMINIUM RE-FILE BEING A VACATION OF VILLAGE AT ASHTON PLACE CONDOMINIUM AMENDMENT 1 VOLUME 88 PAGES 40-48 AMENDMENT 2 VOLUME 89 PAGES 11-17 AMENDMENT 3 VOLUME 90 PAGES 02-05 AND AMENDMENT 4 VOLUME 90 PAGES 34-37 LORAIN COUNTY PLAT RECORDS AND RE-ESTABLISHMENT OF CONDOMINIUM IN ORIGINAL RIDGEVILLE TOWNSHIP LOT NUMBER 38, NOW IN THE CITY OF NORTH RIDGEVILLE - LORAIN COUNTY - STATE OF OHIO SEPTEMBER, 2016
SCALE: 1 INCH = 50 FEET



ACREAGE BREAKDOWN:

ACREAGE OF UNITS	0.2086 ACRES
ACREAGE OF COMMON ELEMENTS OUTSIDE OF BUILDINGS (NOT INCLUDING COMMON ELEMENTS UNDER BUILDINGS)	0.9386 ACRES
LAND DECLARED PHASE 4	1.1472 ACRES
PHASES 1-3	4.7453 ACRES
EXPANDABLE PROPERTY	3.9108 ACRES
TOTAL	9.8033 ACRES



ACCEPTANCE AND APPROVALS

APPROVED THIS _____ DAY OF _____, 20____
BY THE MAYOR OF THE CITY OF NORTH RIDGEVILLE.

MAYOR OF THE CITY OF NORTH RIDGEVILLE

NAME PRINTED _____

APPROVED THIS _____ DAY OF _____, 20____
BY THE PLANNING COMMISSION OF THE CITY OF NORTH RIDGEVILLE.

PLANNING COMMISSION OR RESPONSIBLE OFFICIAL OF THE CITY OF NORTH RIDGEVILLE

NAME PRINTED _____

APPROVED THIS _____ DAY OF _____, 20____
BY THE CITY ENGINEER OF THE CITY OF NORTH RIDGEVILLE.

CITY ENGINEER OF THE CITY OF NORTH RIDGEVILLE

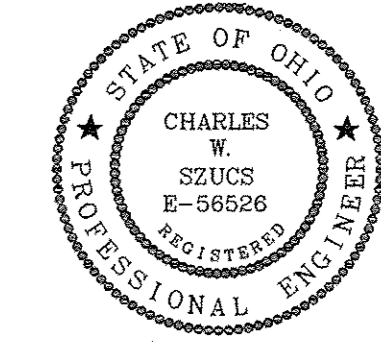
NAME PRINTED _____

TRANSFERRED
SEP 28 2016
I. CRAIG SNODGRASS, CPA, CGFM
LORAIN COUNTY AUDITOR

Doc ID: 01969450003 Type: OFF
Kind: PLAT
Recorded: 09/28/2016 at 10:26:57 AM
Fee Amt: \$299.20 Page 1 of 3
Lorain County, Ohio
Judith M. Newdick County Recorder
File # 2016-0602463

FIDELITY NATIONAL TITLE - SANDUSKY
5340 MEADOW LAND CT
SHEFFIELD VILLAGE, OH 44035

Vol. 102
pgs 52, 53, 54

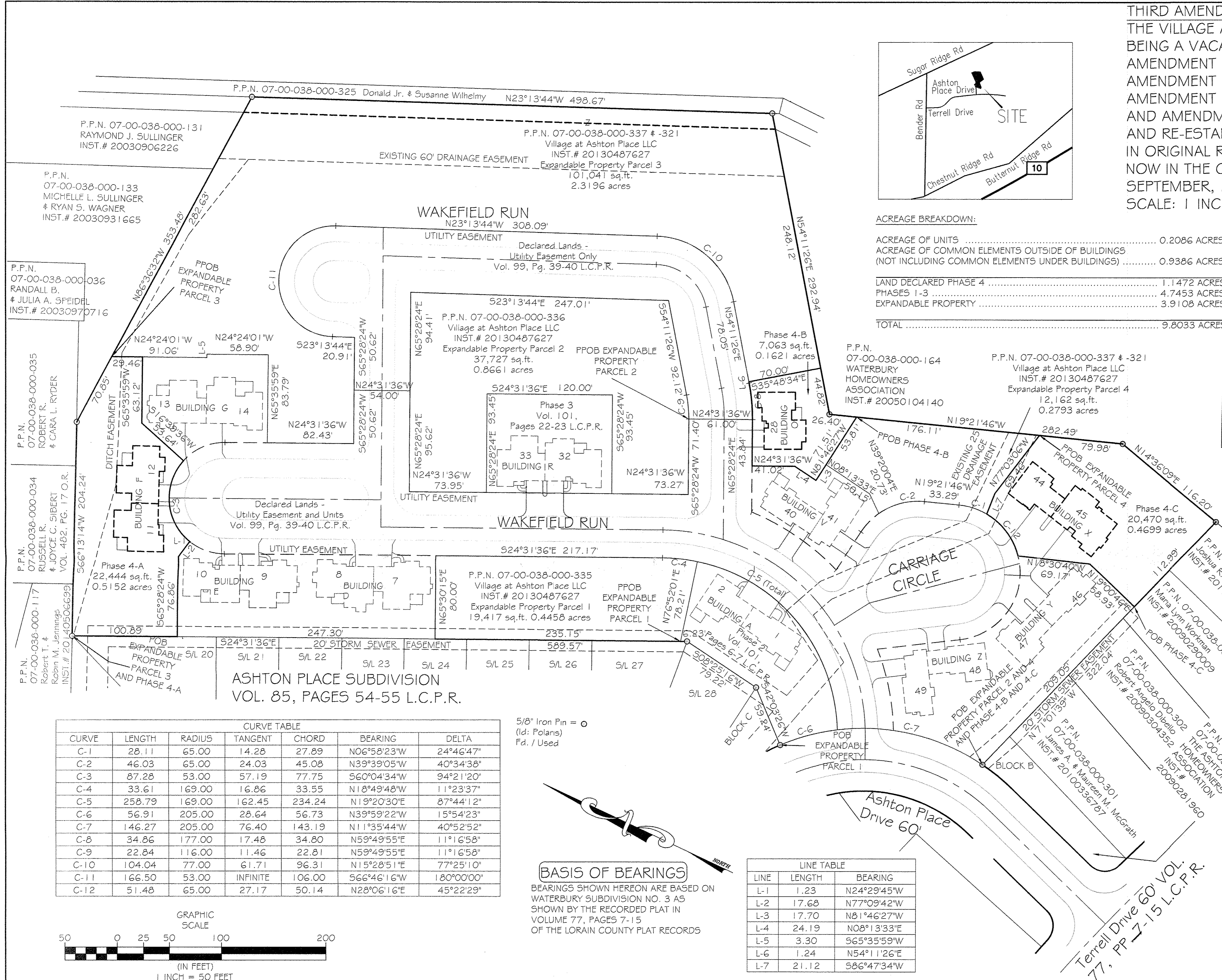


I HEREBY CERTIFY TO THE FOLLOWING: THAT THE LOCATIONS OF THE BUILDING FOUNDATIONS SHOWN BY SOLID THICK LINES AND AND DIMENSIONS, AND THEIR FINISHED FLOOR ELEVATIONS ARE ACCURATELY SHOWN FROM A FIELD SURVEY MADE UNDER MY DIRECT SUPERVISION, AND WERE ACTUALLY CONSTRUCTED.

Michael P. Spellacy 9/23/2016
MICHAEL P. SPELLACY P.S. #8169 DATE

I HEREBY CERTIFY THAT THESE DRAWINGS ACCURATELY SHOW EACH BUILDING AS BUILT OR CONSTRUCTED.

Charles W. Szucs 9/23/2016
CHARLES W. SZUCS, P.E. #56526 DATE



CURVE TABLE

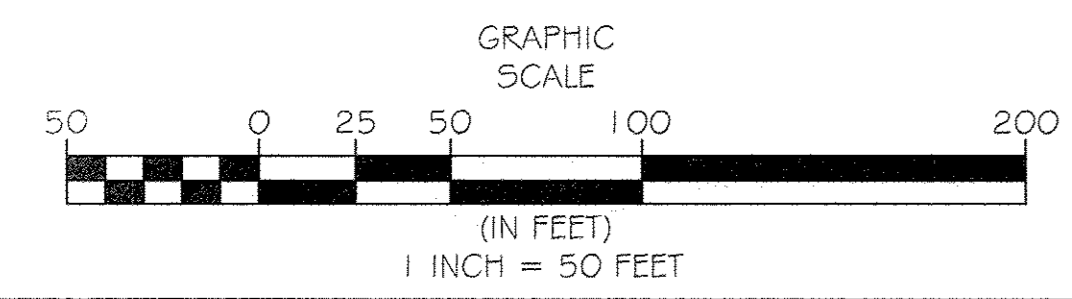
CURVE	LENGTH	RADIUS	TANGENT	CHORD	BEARING	DELTA
C-1	28.11	65.00	14.28	27.89	N06°58'23"W	24°46'47"
C-2	46.03	65.00	24.03	45.08	N39°39'05"W	40°34'38"
C-3	87.28	53.00	57.19	77.75	S60°04'34"W	94°21'20"
C-4	33.61	169.00	16.86	33.55	N18°49'48"W	11°23'37"
C-5	258.79	169.00	162.45	234.24	N19°20'30"E	87°44'12"
C-6	56.91	205.00	28.64	56.73	N39°59'22"W	15°54'23"
C-7	146.27	205.00	76.40	143.19	N11°35'44"W	40°52'52"
C-8	34.86	177.00	17.48	34.80	N59°49'55"E	11°16'58"
C-9	22.84	116.00	11.46	22.81	N59°49'55"E	11°16'58"
C-10	104.04	77.00	61.71	96.31	N15°28'51"E	77°25'10"
C-11	166.50	53.00	INFINITE	106.00	S66°46'16"W	180°00'00"
C-12	51.48	65.00	27.17	50.14	N28°06'16"E	45°22'29"

5/8" Iron Pin = (Id: Polaris)
Fd. / Used

BASIS OF BEARINGS
BEARINGS SHOWN HEREON ARE BASED ON WATERBURY SUBDIVISION NO. 3 AS SHOWN BY THE RECORDED PLAT IN VOLUME 77, PAGES 7-15 OF THE LORAIN COUNTY PLAT RECORDS

LINE TABLE

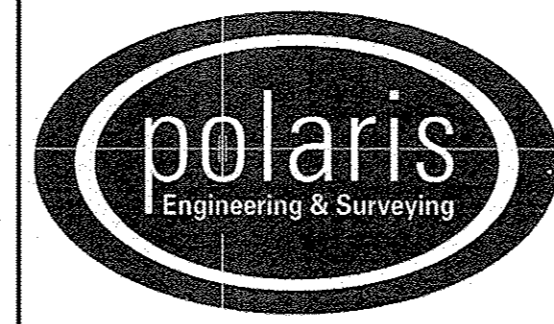
LINE	LENGTH	BEARING
L-1	1.23	N24°29'45"W
L-2	17.68	N77°09'42"W
L-3	17.70	N81°46'27"W
L-4	24.19	N08°13'33"E
L-5	3.30	S65°35'59"W
L-6	1.24	N54°11'26"E
L-7	21.12	S86°47'34"W



REV. No.	DATE	BY	CHK'D

DATE: 09/07/2016
SCALE: HOR. 1"=50'
VERT. 1"=0'
FOLDER: Surveys/Plats
FILENAME: Replat-03
TAB: Phase 4-01
DRAWN: MPS

VILLAGE AT ASHTON PLACE
CONDOMINIUM RE-FILE
PHASE 4
PART OF ORIGINAL RIDGEVILLE TOWNSHIP LOT 38
CITY OF NORTH RIDGEVILLE - LORAIN COUNTY - OHIO



POLARIS ENGINEERING & SURVEYING, INC.
34600 CHARDON ROAD - SUITE D
WILLOUGHBY HILLS, OHIO
44094 (440) 944-4433 (440) 944-3722 (Fax)
www.polaris-es.com

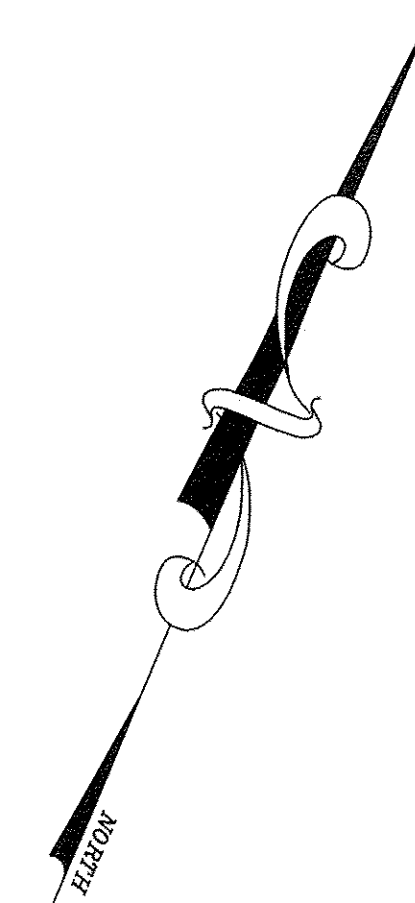
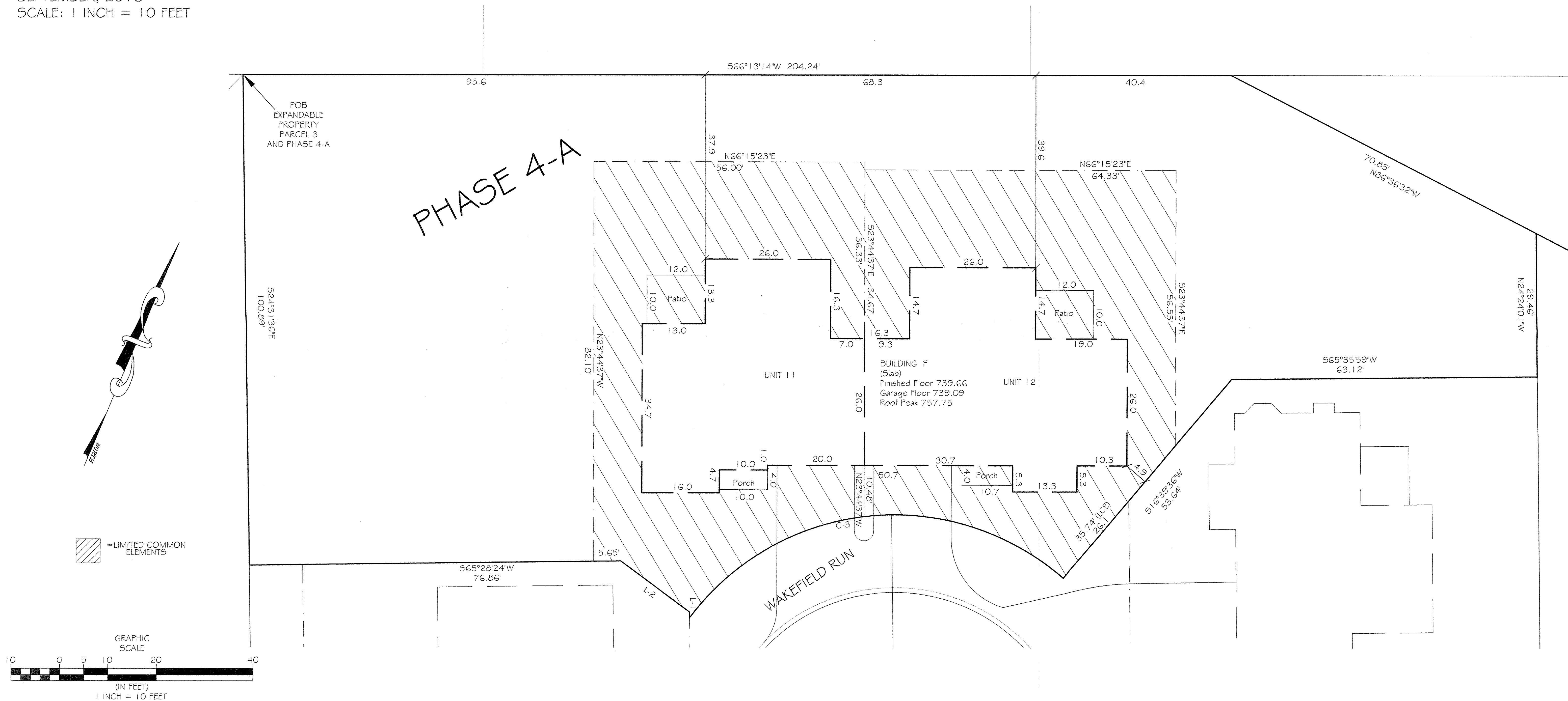
PHASE 4
VILLAGE AT ASHTON PLACE
CONDOMINIUM
AS RE-ESTABLISHED

CONTRACT No.	
14262	
SHEET	OF
01	03

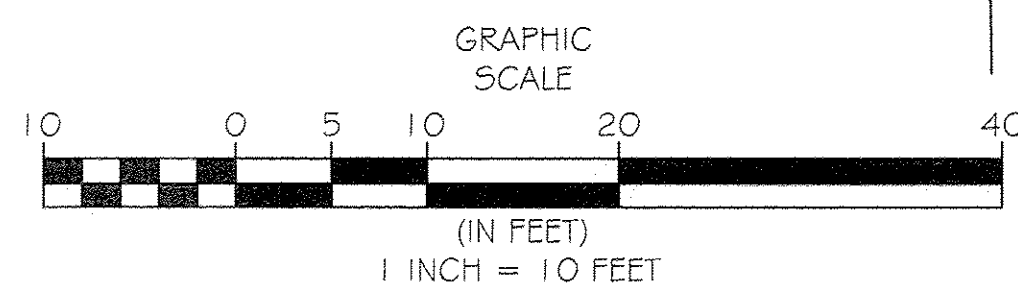
THIRD AMENDMENT TO DECLARATION OF RE-ESTABLISHED CONDOMINIUM
 THE VILLAGE AT ASHTON PLACE CONDOMINIUM RE-FILE
 BEING A VACATION OF VILLAGE AT ASHTON PLACE CONDOMINIUM
 AMENDMENT 1 VOLUME 88 PAGES 40-48
 AMENDMENT 2 VOLUME 89 PAGES 11-17
 AMENDMENT 3 VOLUME 90 PAGES 02-05
 AND AMENDMENT 4 VOLUME 90 PAGES 34-37 LORAIN COUNTY PLAT RECORDS
 AND RE-ESTABLISHMENT OF CONDOMINIUM
 IN ORIGINAL RIDGEVILLE TOWNSHIP LOT NUMBER 38,
 NOW IN THE CITY OF NORTH RIDGEVILLE - LORAIN COUNTY - STATE OF OHIO
 SEPTEMBER, 2016
 SCALE: 1 INCH = 10 FEET

LINE TABLE		
LINE	LENGTH	BEARING
L-1	1.23	N24°29'45"W
L-2	17.68	N77°09'42"W

CURVE TABLE						
CURVE	LENGTH	RADIUS	TANGENT	CHORD	BEARING	DELTA
C-3	87.28	53.00	57.19	77.75	S60°04'34"W	94°21'20"



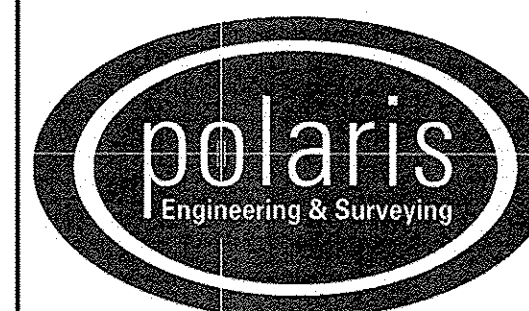
 = LIMITED COMMON ELEMENTS



REV. No.	DATE	BY	CHK'D

DATE: 09/07/2016
 SCALE: HOR. 1" = 10'
 VERT. 1" = 0'
 FOLDER: Surveys/Plats
 FILENAME: Replat-03
 TAB: Phase 4-02
 DRAWN: MPS

VILLAGE AT ASHTON PLACE
 CONDOMINIUM RE-FILE
 PHASE 4
 PART OF ORIGINAL RIDGEVILLE TOWNSHIP LOT 38
 CITY OF NORTH RIDGEVILLE - LORAIN COUNTY - OHIO

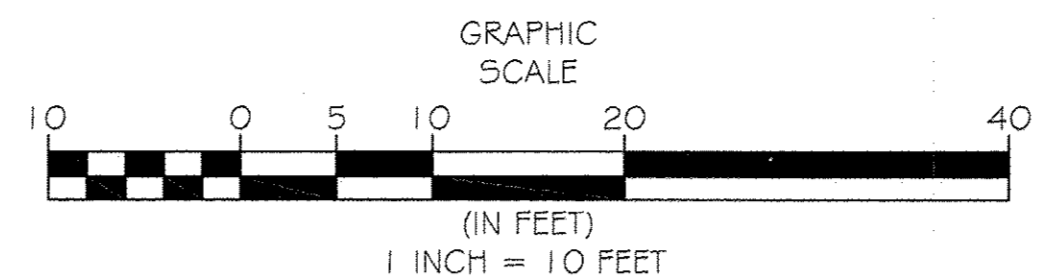


POLARIS ENGINEERING & SURVEYING, INC.
 34600 CHARDON ROAD - SUITE D
 WILLOUGHBY HILLS, OHIO
 44094 (440) 944-4433 (440) 944-3722 (Fax)
 www.polaris-es.com

PHASE 4-A
 VILLAGE AT ASHTON PLACE
 CONDOMINIUM
 AS RE-ESTABLISHED

CONTRACT No.	
14262	
SHEET	OF
02	03

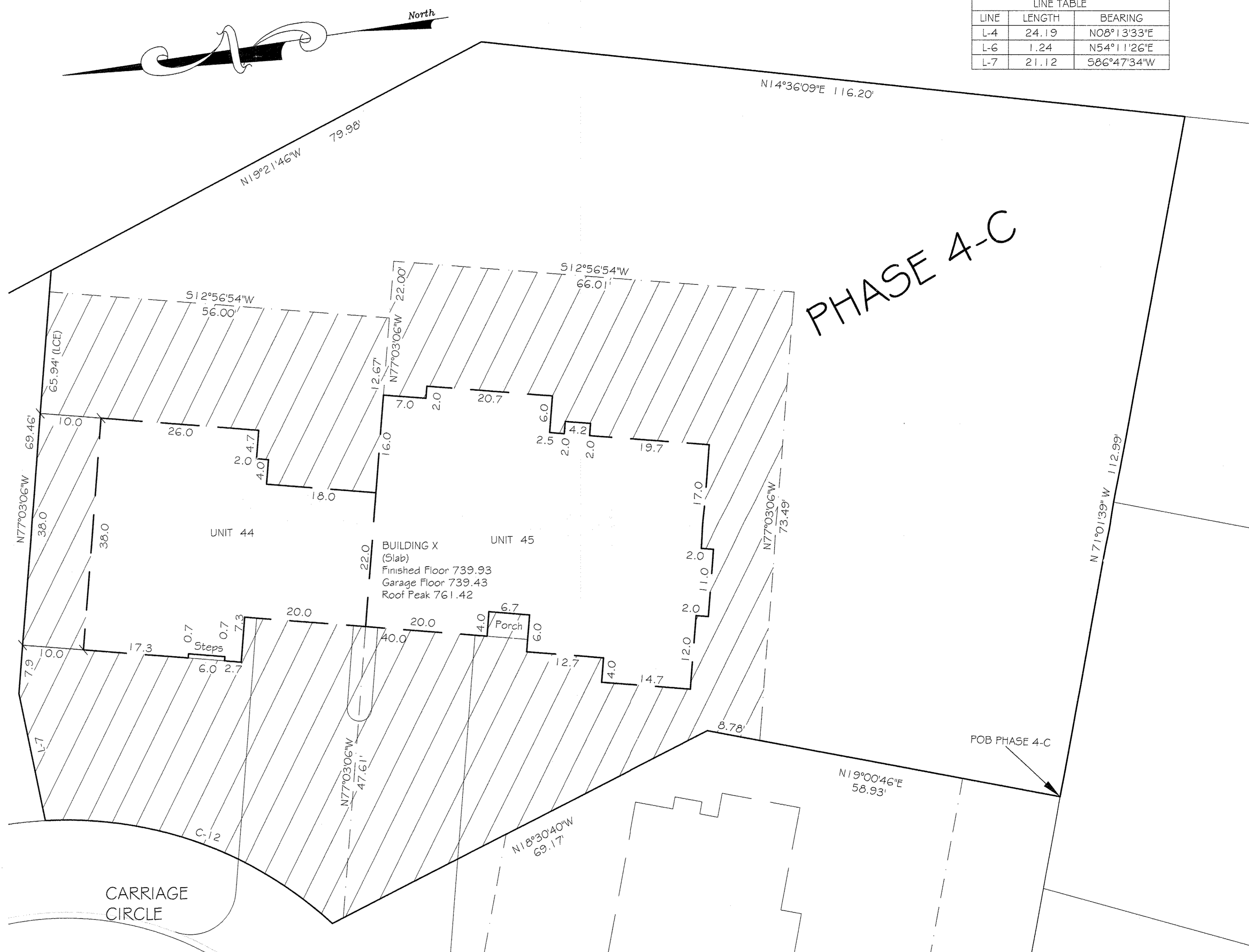
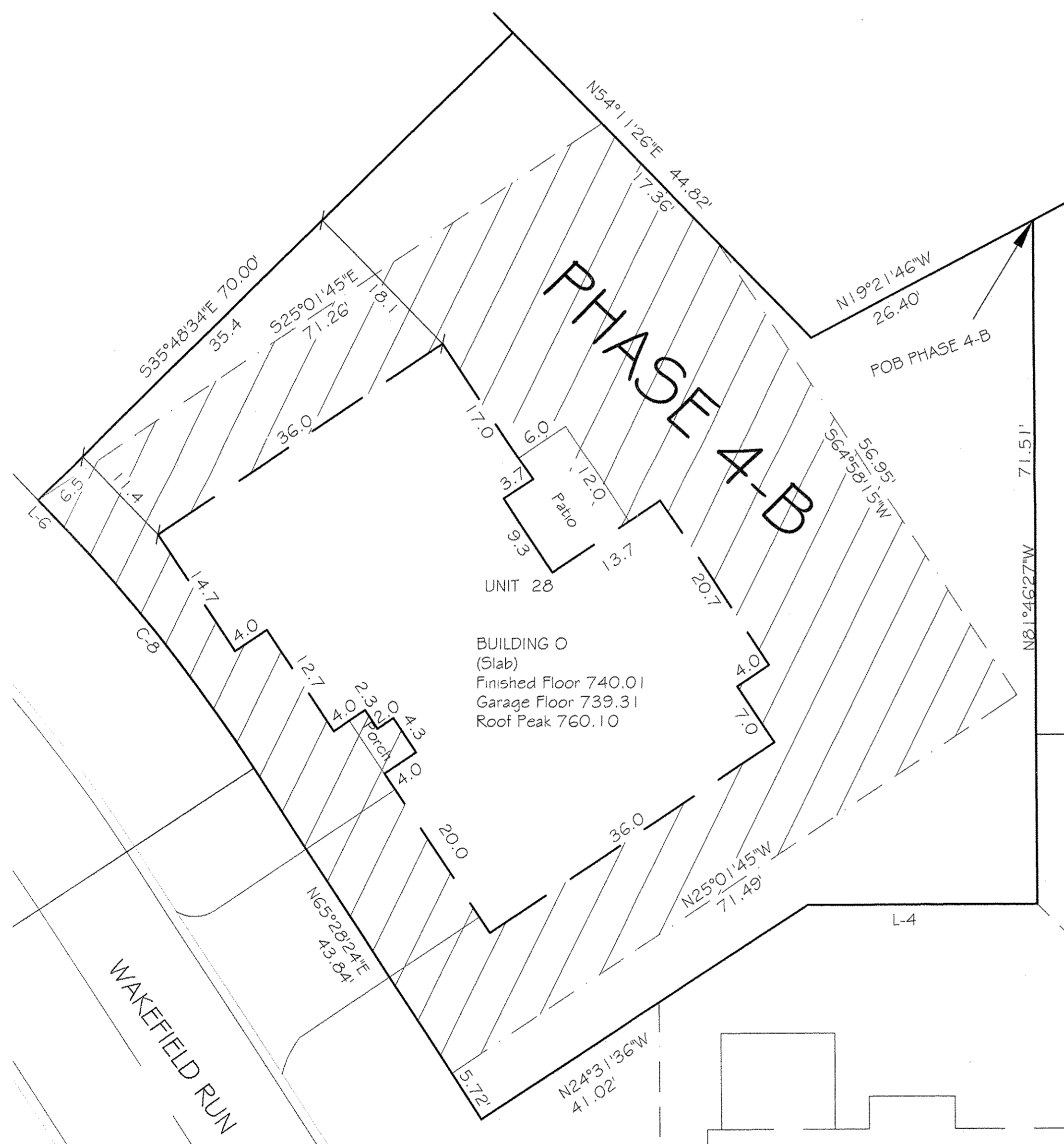
THIRD AMENDMENT TO DECLARATION OF RE-ESTABLISHED CONDOMINIUM
 THE VILLAGE AT ASHTON PLACE CONDOMINIUM RE-FILE
 BEING A VACATION OF VILLAGE AT ASHTON PLACE CONDOMINIUM
 AMENDMENT 1 VOLUME 88 PAGES 40-48
 AMENDMENT 2 VOLUME 89 PAGES 11-17
 AMENDMENT 3 VOLUME 90 PAGES 02-05
 AND AMENDMENT 4 VOLUME 90 PAGES 34-37 LORAIN COUNTY PLAT RECORDS
 AND RE-ESTABLISHMENT OF CONDOMINIUM
 IN ORIGINAL RIDGEVILLE TOWNSHIP LOT NUMBER 38,
 NOW IN THE CITY OF NORTH RIDGEVILLE - LORAIN COUNTY - STATE OF OHIO
 SEPTEMBER, 2016
 SCALE: 1 INCH = 10 FEET



CURVE TABLE						
CURVE	LENGTH	RADIUS	TANGENT	CHORD	BEARING	DELTA
C-8	34.86	177.00	17.48	34.80	N59°49'55"E	111°16'58"
C-12	51.48	65.00	27.17	50.14	N28°06'16"E	45°22'29"

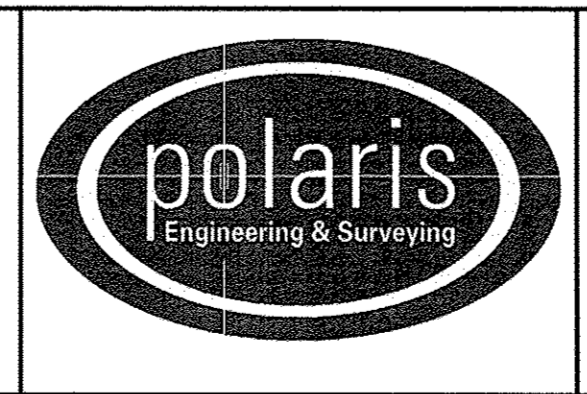
LINE TABLE		
LINE	LENGTH	BEARING
L-4	24.19	N08°13'33"E
L-6	1.24	N54°11'26"E
L-7	21.12	S86°47'34"W

= LIMITED COMMON ELEMENTS



REV. No.	DATE	BY	CHK'D

DATE: 09/07/2016
 SCALE: HOR. 1"=10'
 VERT. 1"=0'
 FOLDER: Surveys/Plats
 FILENAME: Replat-03
 TAB: Phase 4-03
 DRAWN: MPS



POLARIS ENGINEERING & SURVEYING, INC.
 34600 CHARDON ROAD - SUITE D
 WILLOUGHBY HILLS, OHIO
 44094 (440) 944-4433 (440) 944-3722 (Fax)
 www.polaris-es.com

PHASE 4-B & 4-C
 VILLAGE AT ASHTON PLACE
 CONDOMINIUM
 AS RE-ESTABLISHED

CONTRACT No.	
14262	
SHEET	OF
03	03