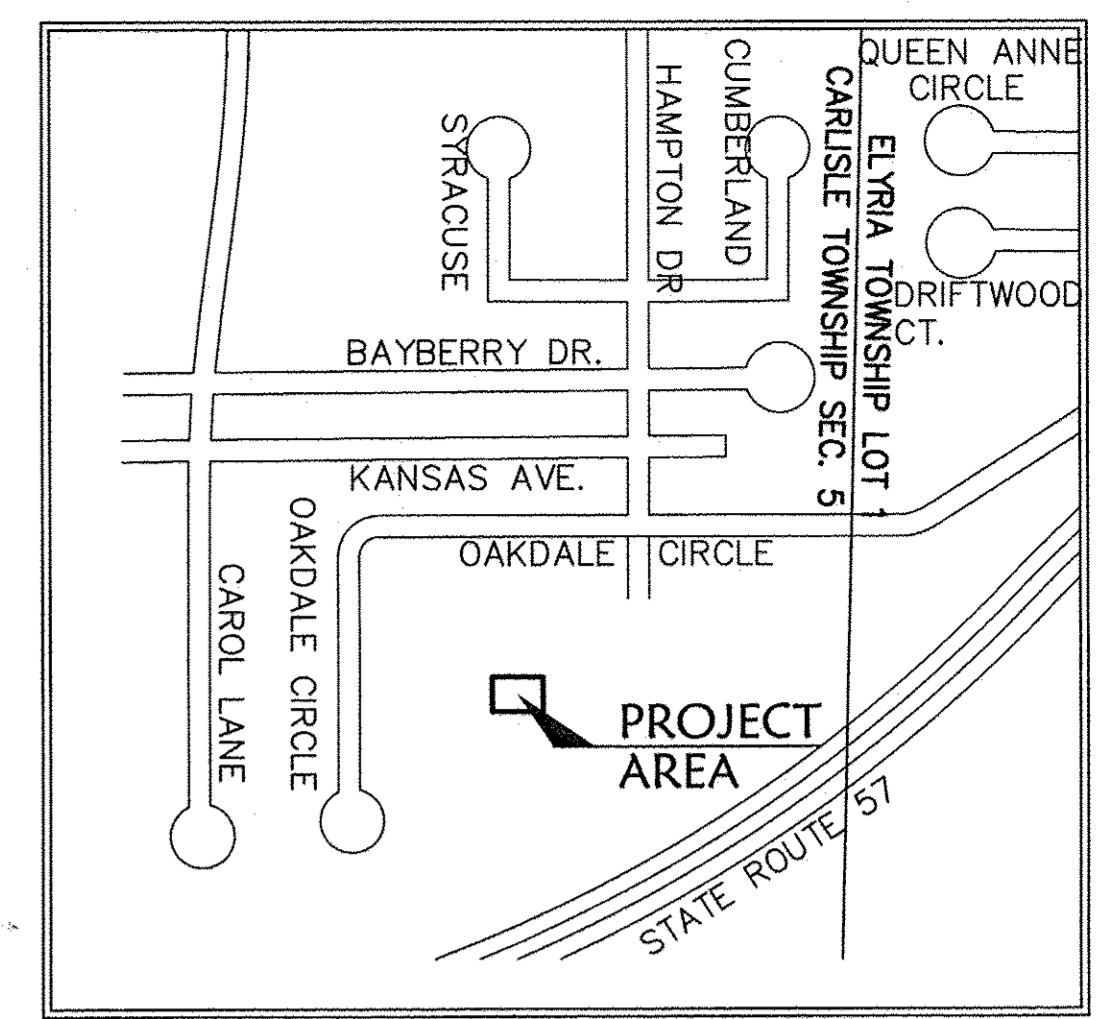
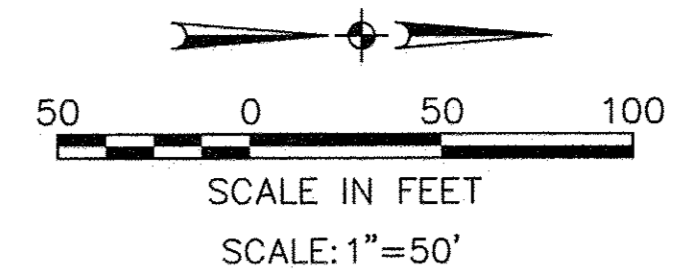
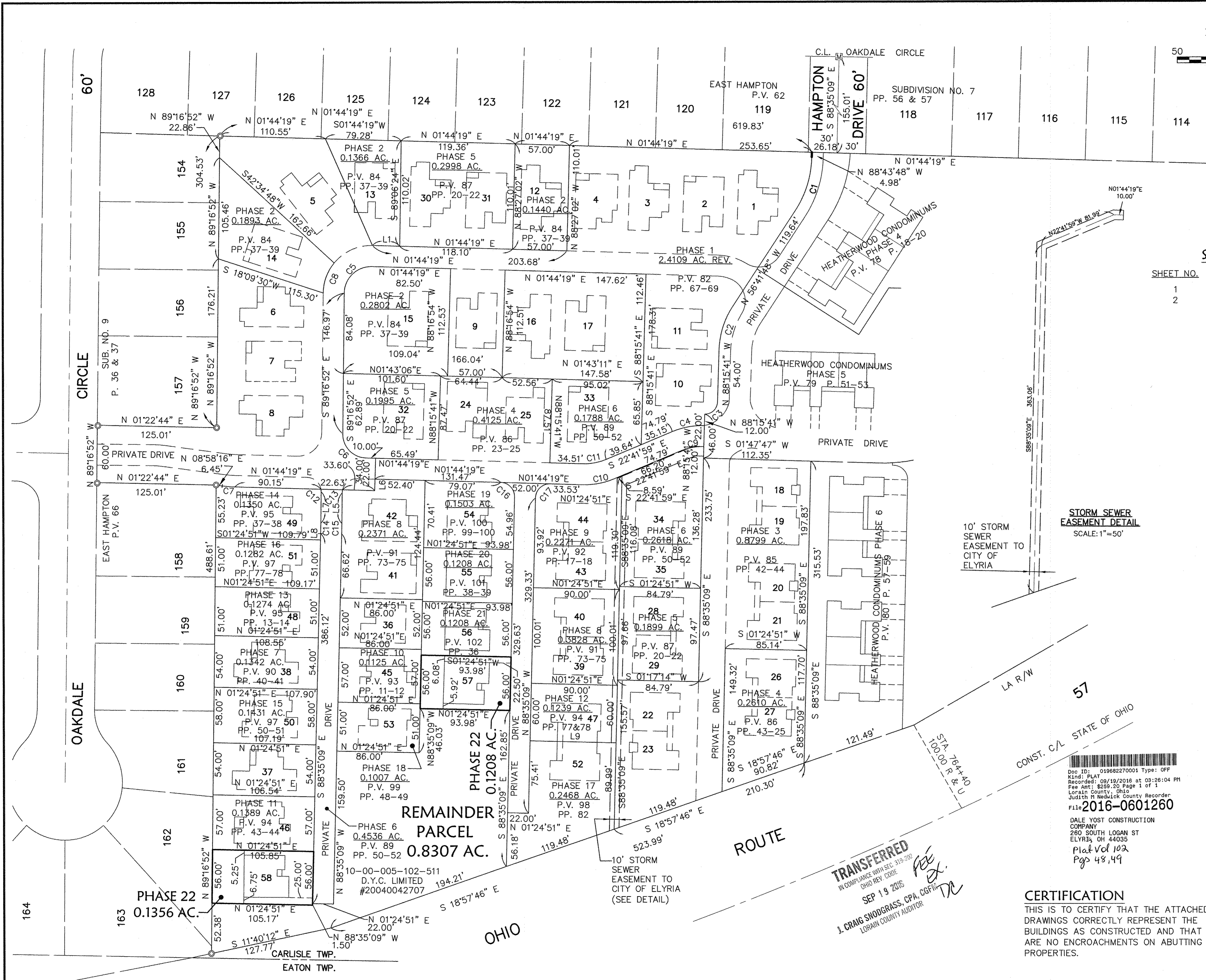


R:\04000\04142-CP22\CIVIL_3D_2014\22-PLAT01.dwg 8/29/2016 7:39:18 AM



SHEET INDEX

SHEET NO.	DESCRIPTION
1	SURVEY MAP
2	FLOOR & FOUNDATION PLANS & ELEVATIONS

AREA MAP - NO SCALE

BEARING SYSTEM IS TAKEN FROM THE HEATHERWOOD PROJECT.

LINE DATA

LINE	DISTANCE	BEARING
L1	28.58'	N 01°44'19" E
L2	8.29'	S 89°06'24" E
L3	3.79'	N 00°53'36" E
L4	9.11'	N 66°18'03" E
L5	31.84'	S 89°12'58" E
L6	12.00'	N 88°15'41" W
L7	32.85'	S 89°12'58" E
L8	6.62'	S 88°35'09" E
L9	90.00'	N 01°24'51" E

LEGEND

- ⊙ - IRON PIN/PIPE FOUND
- ☒ - MONUMENT BOX FOUND
- - 5/8" CAPPED REBAR SET
- PK NAIL SET

PHASE 22 TOTAL = 0.2564 AC.

CURVE DATA

CURVE	RADIUS	LENGTH	TANGENT	DELTA	CHORD	BEARING
C1	105.63'	59.06'	30.32'	32°02'01"	58.29'	N72°42'48"W
C2	88.73'	48.88'	25.08'	31°33'53"	48.27'	S72°28'44"E
C3	13.00'	20.42'	13.00'	90°00'00"	18.38'	N43°15'41"W
C4	81.00'	34.55'	17.54'	24°26'18"	34.29'	S10°28'50"E
C5	28.00'	44.48'	28.50'	91°01'11"	39.95'	N43°46'16"W
C6	25.00'	38.82'	24.56'	88°58'49"	35.04'	S46°13'44"W
C7	125.62'	13.25'	6.63'	6°02'35"	13.24'	N04°51'23"E
C8	50.00'	34.04'	17.71'	39°00'21"	33.39'	S69°46'41"E
C9	59.00'	25.17'	12.78'	24°26'18"	24.97'	N10°28'50"W
C10	81.00'	34.55'	17.54'	24°26'18"	34.29'	S10°28'50"E
C11	59.00'	25.17'	12.78'	24°26'18"	24.97'	N10°28'50"W
C12	15.00'	2.74'	1.37'	10°26'51"	2.73'	N85°34'18"E
C13	15.00'	3.38'	1.70'	12°54'42"	3.37'	S82°45'44"E
C14	973.95'	10.88'	5.44'	00°38'24"	10.88'	S88°54'03"E
C15	1033.24'	11.12'	5.56'	00°37'00"	11.12'	S88°54'03"E
C16	15.00'	23.47'	14.91'	89°39'32"	21.15'	S46°34'35"W
C17	15.00'	23.64'	15.08'	90°18'26"	21.27'	S43°25'25"E

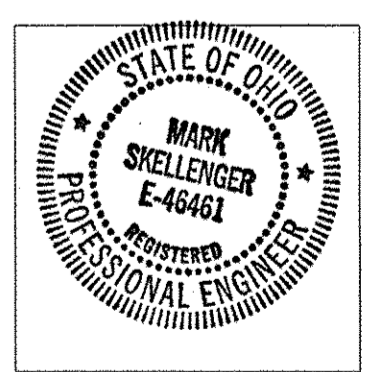
STORM SEWER EASEMENT DETAIL
SCALE: 1"=50'

10' STORM SEWER EASEMENT TO CITY OF ELYRIA

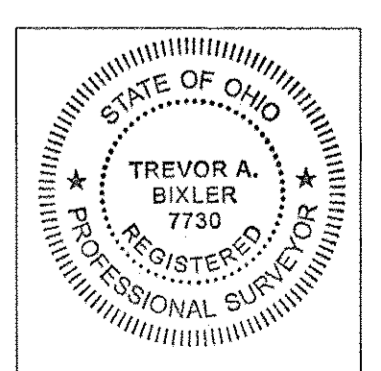
TRANSFERRED
IN COMPLIANCE WITH SEC. 313-209
OHIO REV. CODE
SEP 19 2016
J. ORANG SNOODGRASS CPA, CGFPA
LORAIN COUNTY AUDITOR

CERTIFICATION
THIS IS TO CERTIFY THAT THE ATTACHED DRAWINGS CORRECTLY REPRESENT THE BUILDINGS AS CONSTRUCTED AND THAT THERE ARE NO ENCROACHMENTS ON ADJUTING PROPERTIES.

Mark B. Skellenger 8-29-16
MARK B. SKELLENGER
PROFESSIONAL ENGINEER NO. 46461



Trevor A. Bixler 8-29-16
TREVOR A. BIXLER
PROFESSIONAL SURVEYOR NO. 7730



DATE	DESCRIPTION	BY
8-29-16		

DATE	DESCRIPTION	BY

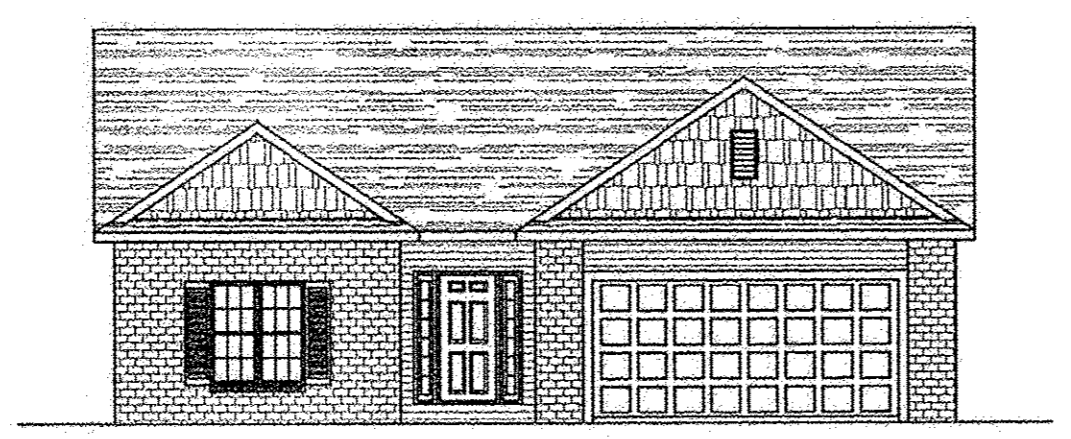
KS ASSOCIATES
KS Associates, Inc.
260 Burns Road, Suite 100
Elyria, OH 44035
P 440 365 4730
F 440 365 4790
www.ksassociates.com

CHESAPEAKE CONDOMINIUM PHASE NO. 22
PART OF
ORIGINAL CARLISLE TOWNSHIP SECTION NO. 5
CITY OF ELYRIA COUNTY OF LORAIN STATE OF OHIO

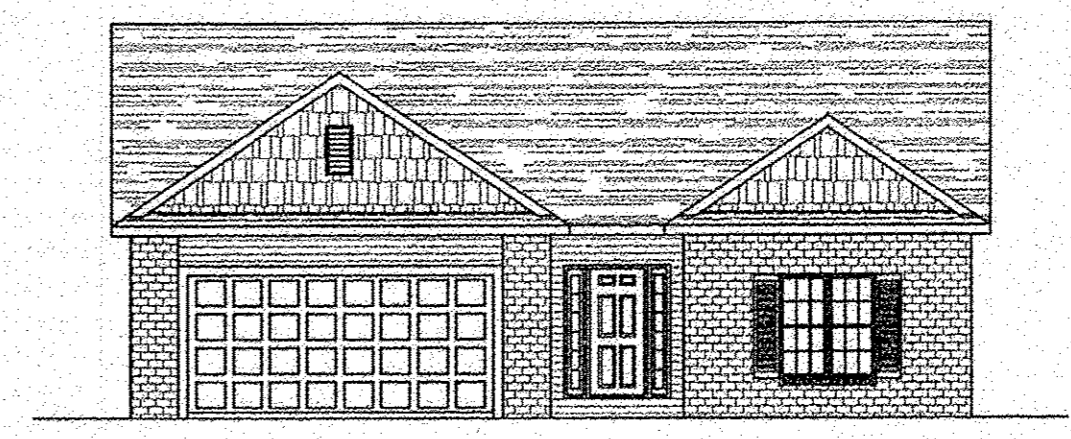
SHEET	1	OF	2
JOB NO.	04142-CP22		

R:\04000\04142-CP22\CIVIL 3D 2014\22-PLAN01.dwg B/29/2016 7:38:42 AM

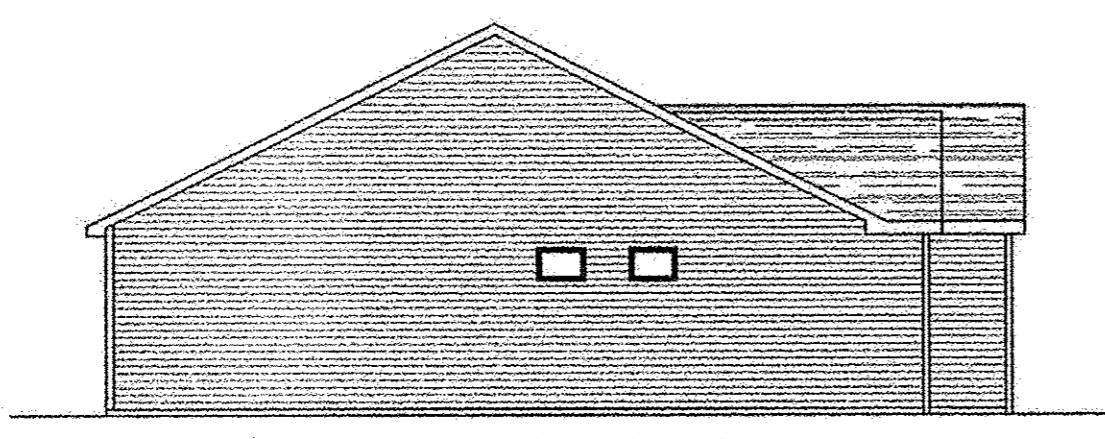
OWNERSHIP PERCENTAGES			
UNIT NO.	SQ. FT.	ELEV. F.F.	% OWNERSHIP
1	1427.16	748.93	1.7369%
2	1645.51	749.08	2.0026%
3	1427.16	749.45	1.7369%
4	1637.92	749.47	1.9933%
5	1427.16	749.50	1.7369%
6	1427.16	749.44	1.7369%
7	1645.51	749.42	2.0026%
8	1427.16	749.44	1.7369%
9	1645.51	749.84	2.0026%
10	1637.92	749.45	1.9933%
11	1645.51	748.48	2.0026%
12	1427.16	749.86	1.7369%
13	1645.51	749.53	2.0026%
14	1645.51	749.39	2.0026%
15	1645.51	749.69	2.0026%
16	1427.16	749.36	1.7369%
17	1645.51	749.23	2.0026%
18	1154.56	749.35	1.4051%
19	1305.39	749.35	1.5887%
20	1154.56	749.41	1.4051%
21	1154.56	749.41	1.4051%
22	1305.39	750.46	1.5887%
23	1154.56	750.46	1.4051%
24	1645.51	749.53	2.0026%
25	1207.46	749.20	1.4695%
26	1305.39	749.81	1.5887%
27	1154.56	749.81	1.4051%
28	1305.39	750.04	1.5887%
29	1305.39	750.04	1.5887%
30	1427.16	749.50	1.7369%
31	1645.51	749.70	2.0026%
32	1645.51	749.35	2.0026%
33	1645.51	749.07	2.0026%
34	1305.39	749.17	1.5887%
35	1305.39	749.17	1.5887%
36	1207.46	749.26	1.4695%
37	1427.16	749.44	1.7369%
38	1427.16	749.36	1.7369%
39	1305.39	749.84	1.5887%
40	1305.39	749.84	1.5887%
41	1645.51	749.45	2.0026%
42	1460.23	749.69	1.7771%
43	1305.39	749.38	1.5887%
44	1305.39	749.38	1.5887%
45	1474.73	749.33	1.7947%
46	1474.73	749.67	1.7947%
47	1305.39	749.98	1.5887%
48	1267.85	749.33	1.5430%
49	1267.85	749.58	1.5430%
50	1637.92	749.36	1.9933%
51	1267.85	749.38	1.5430%
52	1305.39	749.98	1.5887%
53	1267.85	749.33	1.5430%
54	1390.71	749.61	1.6925%
55	1390.71	749.59	1.6925%
56	1390.71	749.74	1.6925%
57	1390.71	749.72	1.6925%
58	1390.71	749.58	1.6925%
TOTAL	82169.42		100.0000%



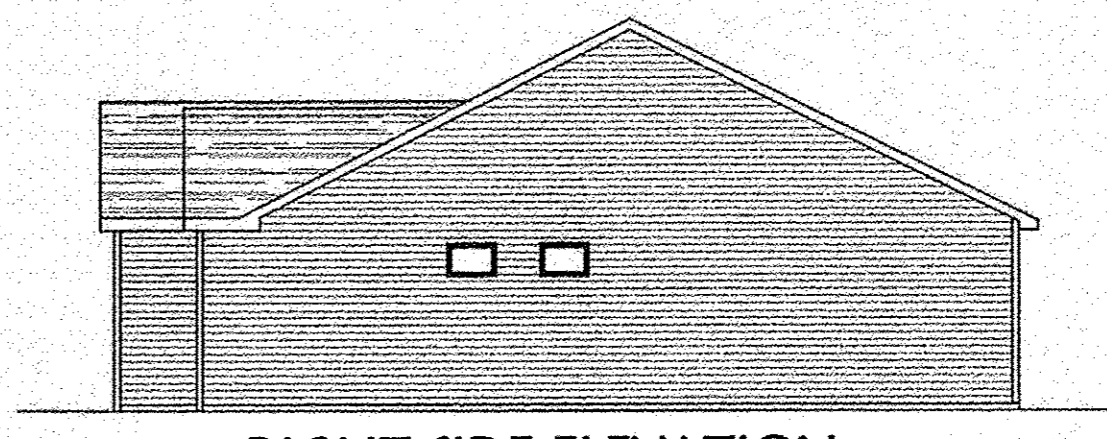
FRONT ELEVATION
LANCASTER MODEL



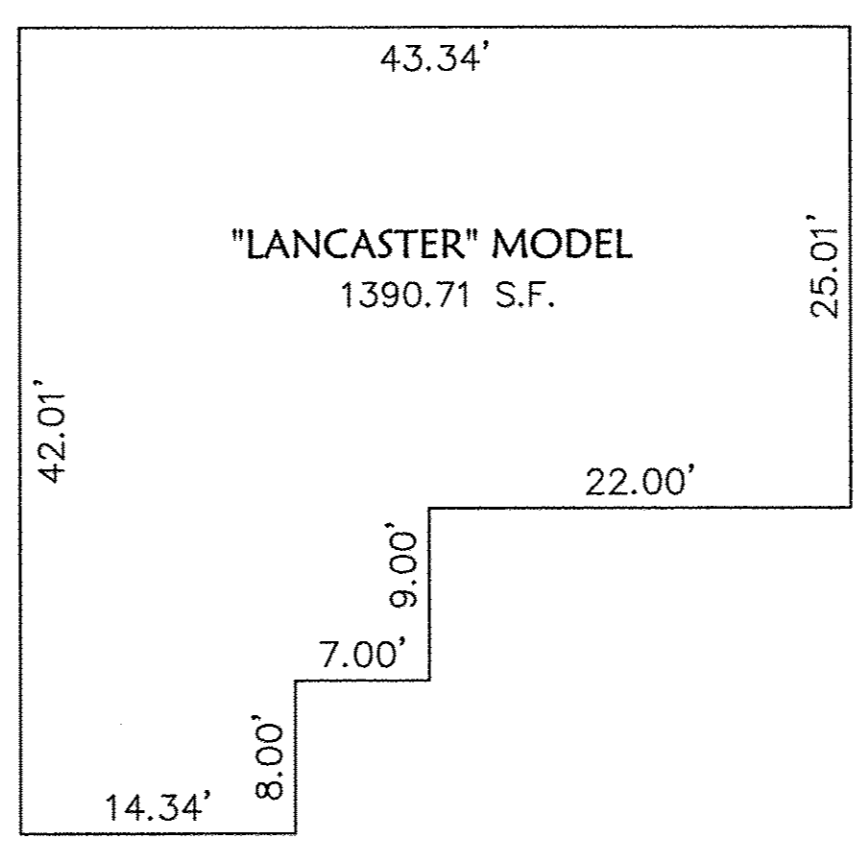
FRONT ELEVATION
LANCASTER MODEL



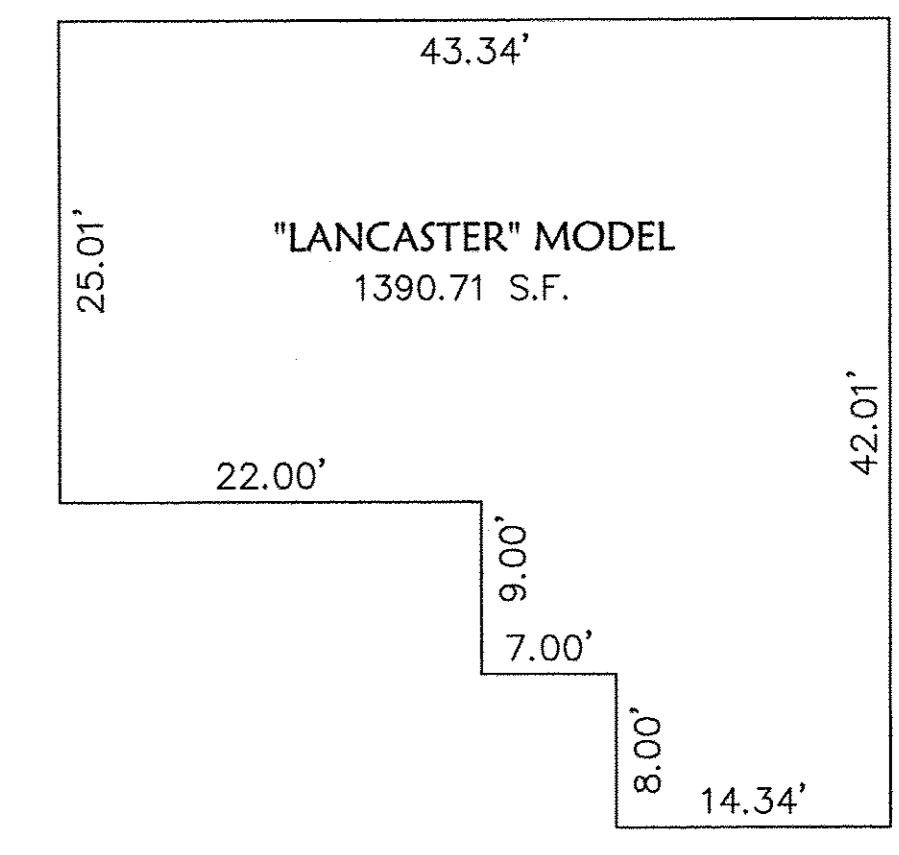
LEFT SIDE ELEVATION



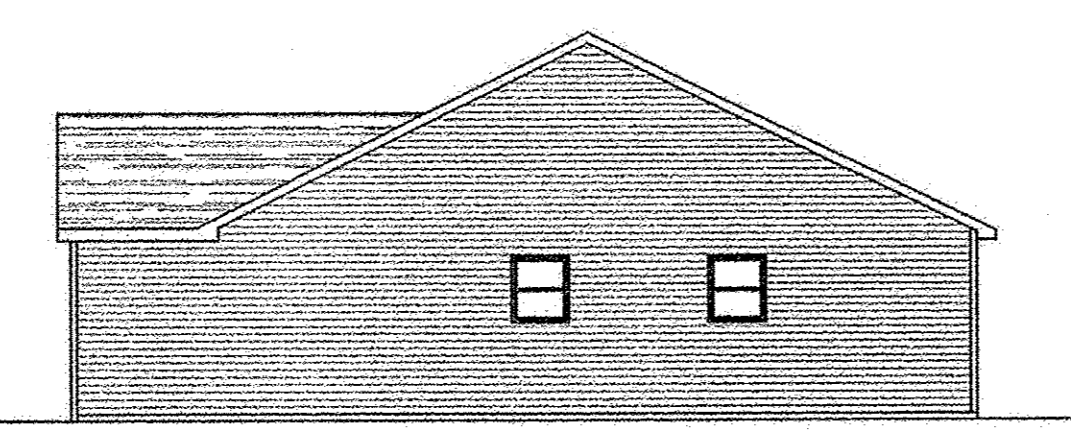
RIGHT SIDE ELEVATION



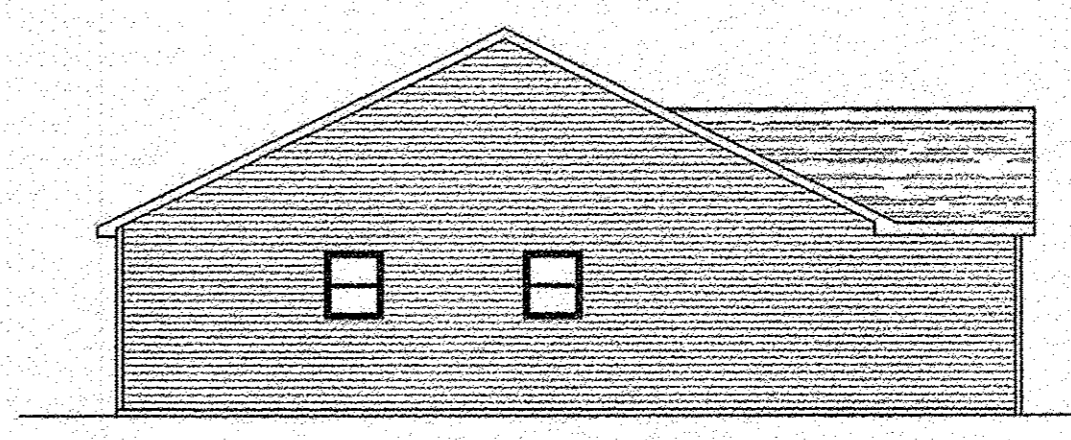
FIRST FLOOR PLAN
(INTERIOR DIMENSIONS)



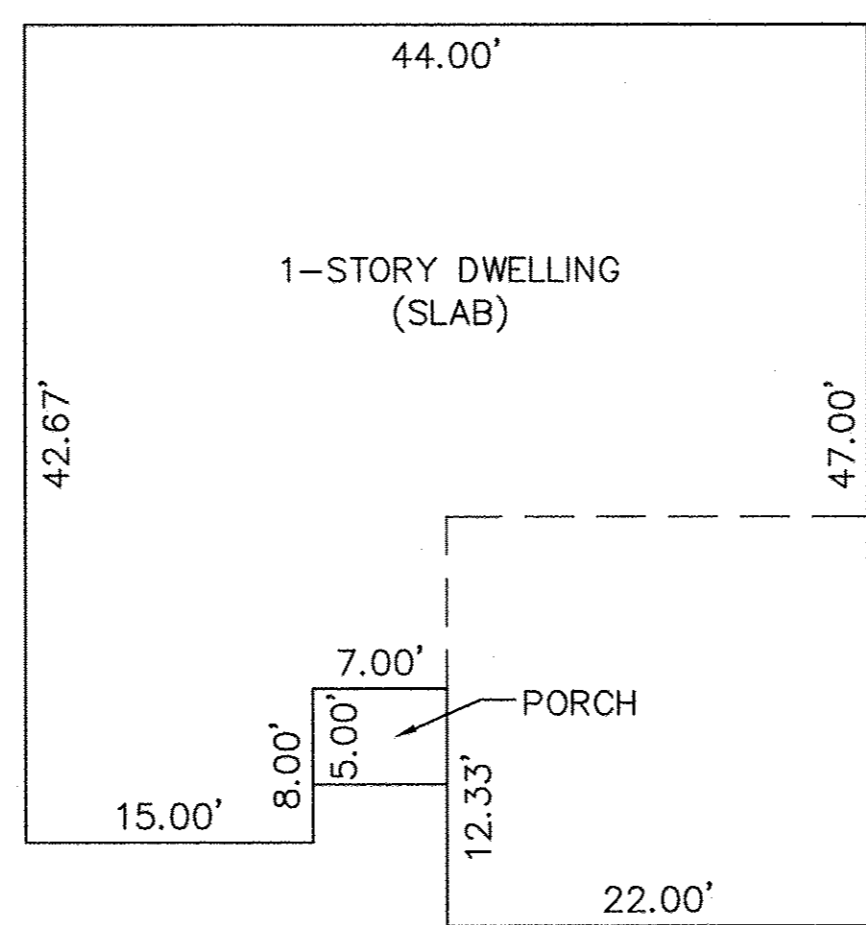
FIRST FLOOR PLAN
(INTERIOR DIMENSIONS)



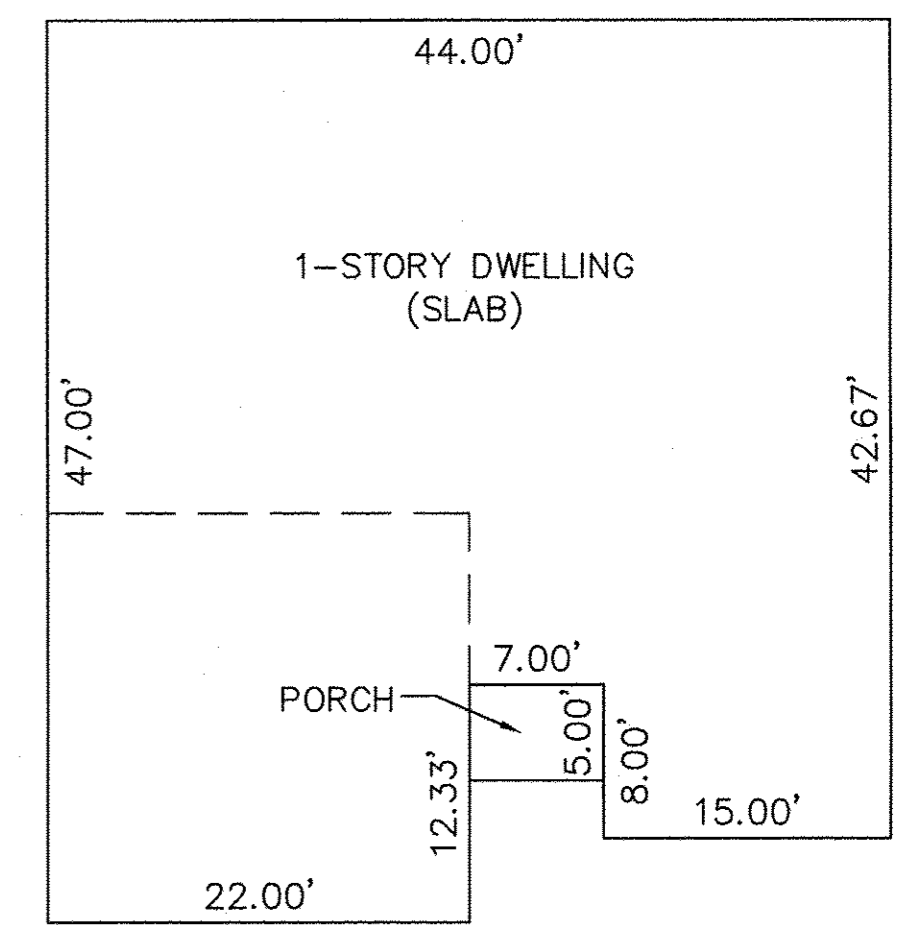
RIGHT SIDE ELEVATION



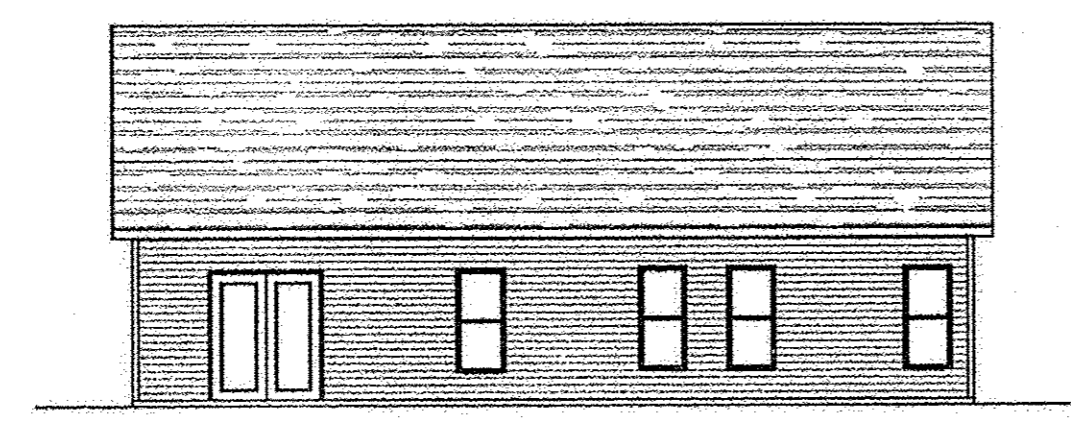
LEFT SIDE ELEVATION



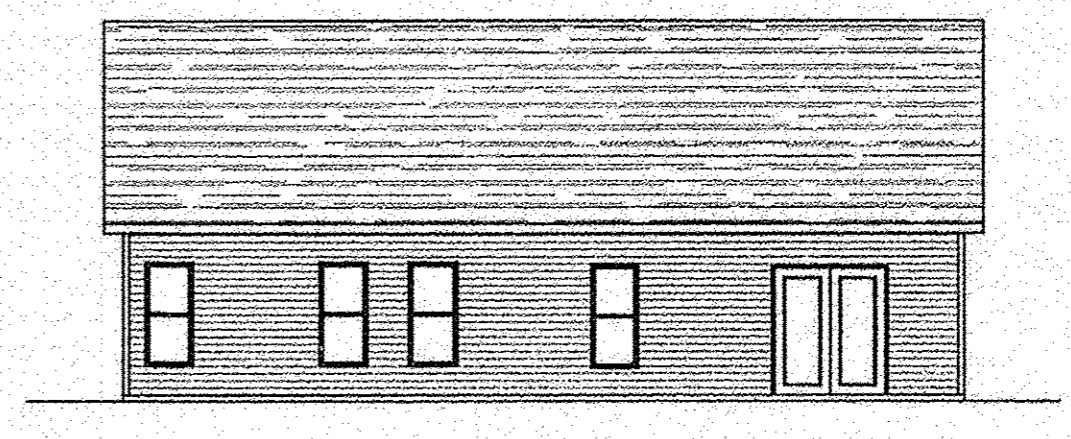
FOUNDATION PLAN
(EXTERIOR DIMENSIONS)



FOUNDATION PLAN
(EXTERIOR DIMENSIONS)



REAR ELEVATION

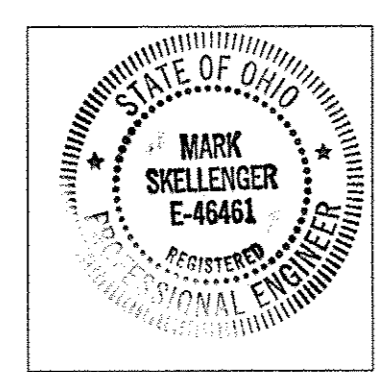


REAR ELEVATION

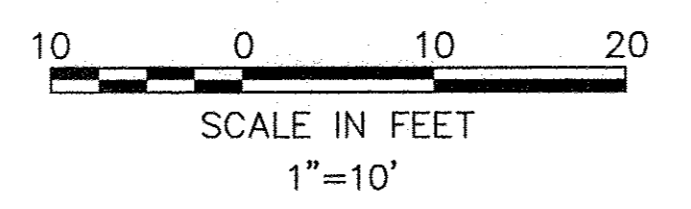
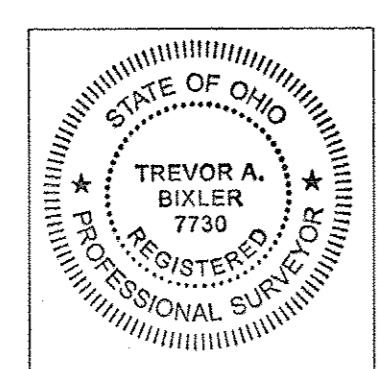
UNIT 57

UNIT 58

Mark B. Skellenger 8-29-16
MARK B. SKELLENGER
PROFESSIONAL ENGINEER NO. 46461



Trevor A. Bixler 8-29-16
TREVOR A. BIXLER
PROFESSIONAL SURVEYOR NO. 7730



DATE	8-29-16	DATE	DESCRIPTION	BY
DRAWN BY:	TAB			
CH'D BY:	TAB			
DWG. NAME:	22-PLAN01			
PATH:	CIVIL_3D_2014			
F.B.:				

KS
KS ASSOCIATES
KS Associates, Inc.
260 Burns Road, Suite 100
Elyria, OH 44035
P 440 365 4730
F 440 365 4790
www.ksassociates.com

**CHESAPEAKE CONDOMINIUM
PHASE NO. 22**
PART OF
ORIGINAL CARLISLE TOWNSHIP SECTION NO. 5
CITY OF ELYRIA COUNTY OF LORAIN STATE OF OHIO

SHEET 2	OF 2
JOB NO. 04142-CP22	