

FIDELITY NATIONAL TITLE - SANDUSKY
5340 MEADOW LAND CT
SHEFFIELD VILLAGE, OH 44035
Vol 102
Pg. 31-32

NOTE:
LIMITED COMMON AREAS
INCLUDE THE LAND WITHIN 3
FEET FROM THE FOUNDATION
AND PATIOS/DECKS/
PORCHES/SUNROOMS
OF EACH UNIT.

TRANSFERRED
IN COMPLIANCE WITH SEC. 319.202
OHIO REV. CODE
JUL 18 2016
J. CRAIG SNODGRASS, CPA, CGFM
LORAIN COUNTY AUDITOR

Doc ID: 01958870001 Type: OFF
Kind: PLAT
Recorded: 07/18/2016 at 11:39:42 AM
Fee Amt: \$180.80 Page 1 of 1
Lorain County, Ohio
Judith H. Nedlick County Recorder
File # 2016-0593245

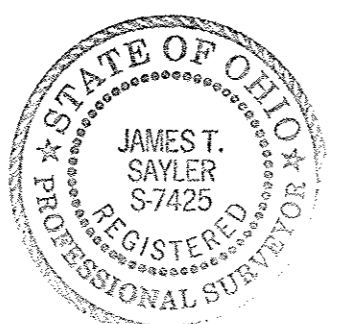
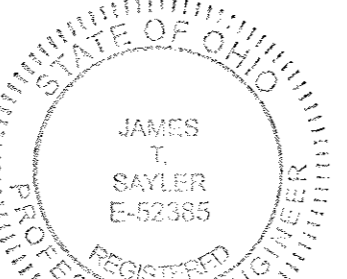
CONDOMINIUM PHASE ACREAGES:

PHASE 1, 1 PARCEL	= 2.6402 AC.
PHASE 2, 6 PARCELS	= 0.9492 AC.
PHASE 3, 3 PARCELS	= 0.7361 AC.
PHASE 4, 4 PARCELS	= 2.1426 AC.
PHASE 5, 1 PARCEL	= 0.3834 AC.
PHASE 6, 3 PARCELS	= 0.7185 AC.
PHASE 7, 3 PARCELS	= 2.2202 AC.
PHASE 8, 3 PARCELS	= 0.4766 AC.
PHASE 9, 1 PARCEL	= 0.1673 AC.
PHASE 10, 2 PARCELS	= 0.4937 AC.
PHASE 11, 1 PARCEL	= 0.1605 AC.
PHASE 12, 2 PARCELS	= 0.4148 AC.
PHASE 13, 2 PARCELS	= 0.3595 AC.
PHASE 14, 2 PARCELS	= 0.3009 AC.
PHASE 15, 2 PARCELS	= 0.4231 AC.
PHASE 16, 3 PARCELS	= 0.5645 AC.
PHASE 17, 1 PARCEL	= 0.5728 AC.
PHASE 18, 2 PARCELS	= 0.4506 AC.
TOTAL TO DATE	= 14.1745 AC.
SUM OF REMAINDERS	= 0.0000 AC.
TOTAL PROJECT	= 14.1745 AC.

CERTIFICATION:
THIS IS TO CERTIFY THAT THE ATTACHED
DRAWINGS CORRECTLY REPRESENT THE
BUILDINGS AS CONSTRUCTED AND THAT
THERE ARE NO ENCROACHMENTS ON
ABUTTING PROPERTIES NOT PART OF
THIS CONDOMINIUM.

JTS 7-12-16
JAMES T. SAYLER, P.E.
PROFESSIONAL ENGINEER NO. E-52385

JTS 7-12-16
JAMES T. SAYLER
PROFESSIONAL SURVEYOR NO. S-7425



Declaration
#16059304

REVISIONS	DATE	DESCRIPTION

VILLAGE AT WATERSIDE CROSSINGS SOUTH NO. 2 CONDOMINIUM PH. 18 BEING A RE-SUBDIVISION OF PART OF COMMON AREA (PARCEL "V") IN THE VILLAGE AT WATERSIDE CROSSINGS SOUTH NO 2 PHASE 7 AS SHOWN BY THE RECORDED PLAN IN VOL. 88 OF MAPS, PG. 30-31 OF LORAIN COUNTY RECORDS AND PART OF ORIGINAL AVON TWP. SECTION 8, CITY OF AVON LAKE, LORAIN COUNTY, OH	THE HENRY G. REITZ ENGINEERING COMPANY 4214 ROCKY RIVER DRIVE CLEVELAND, OHIO 44135 PHONE: (216) 251-3033	1
		2
JUNE 2016		

LEGEND:
 ⊙ DENOTES 5/8" CAPPED (REITZ ENG.) IRON PIN IN MONUMENT BOX USED.
 ○ DENOTES 5/8" CAPPED (REITZ ENG.) IRON PIN FD. & USED.
 ◆ DENOTES 1/4" DRILL HOLE USED.
 GRAPHIC SCALE: 1" = 40'
 0 20 40 80

UNIT 58 FRONT



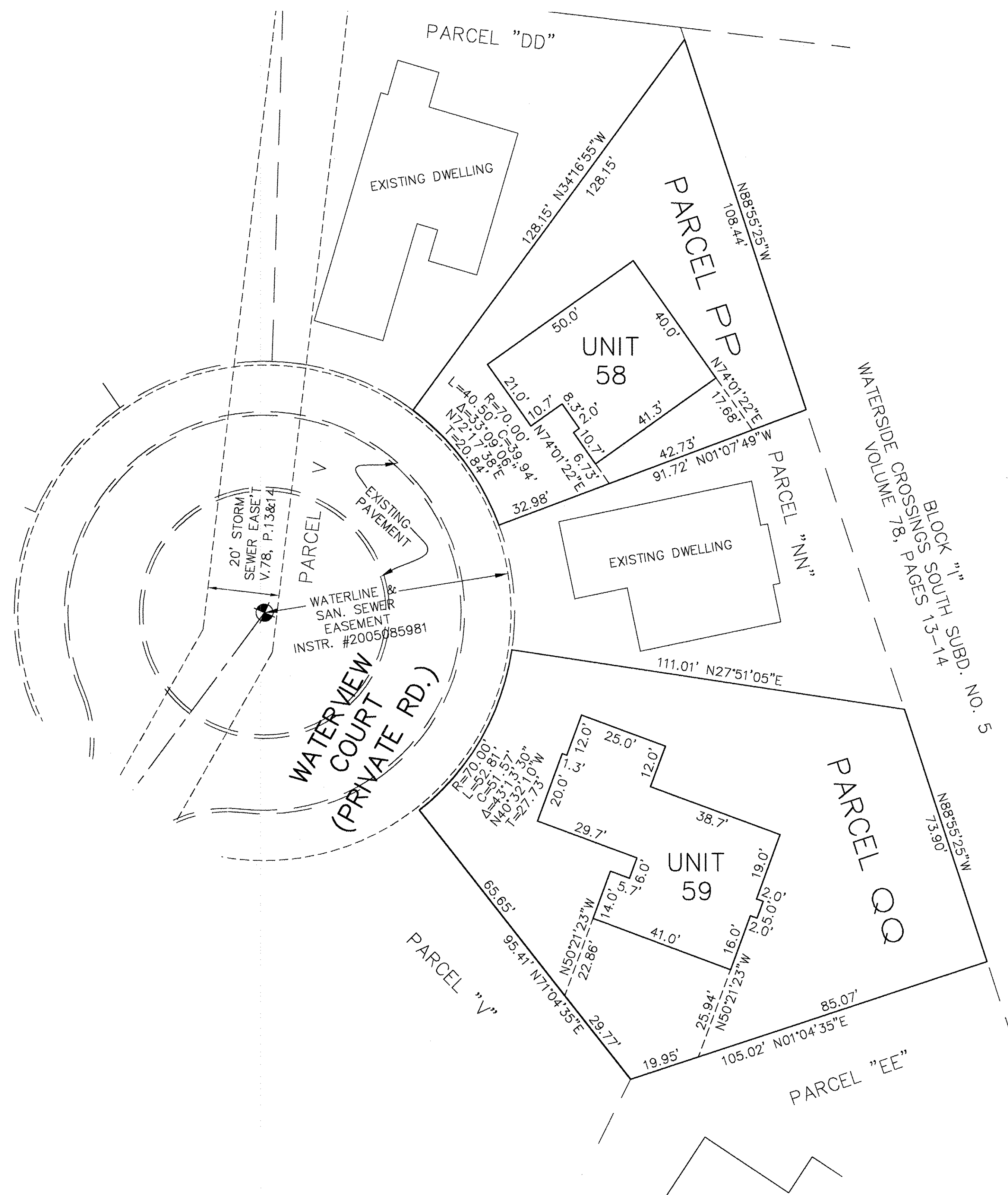
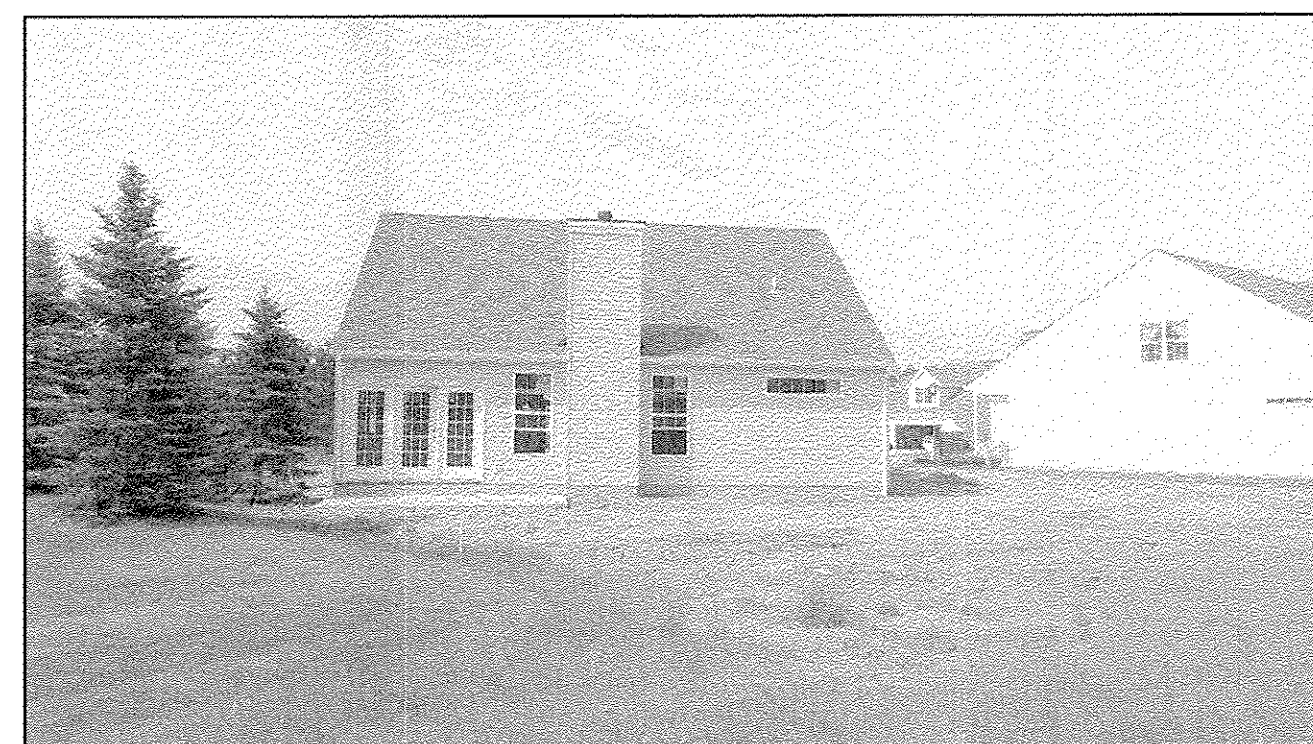
UNIT 58 REAR



UNIT 59 FRONT



UNIT 59 REAR



N
 BASED ON WATERSIDE
 CROSSINGS SOUTH
 PLAT BEARINGS

GRAPHIC SCALE: 1" = 20'
 0 10 20 40

NOTES:
 LIMITED COMMON AREAS INCLUDE THE LAND
 WITHIN 3 FEET FROM THE FOUNDATION AND
 PATIOS/DECKS/PORCHES/SUNROOMS OF
 EACH UNIT.
 ALL ANGLES BETWEEN WALLS ARE 90°
 UNLESS OTHERWISE SPECIFIED

REVISIONS		

**VILLAGE AT WATERSIDE CROSSINGS
 SOUTH NO. 2 CONDOMINIUM PH. 18**
 BEING A RE-SUBDIVISION OF PART OF COMMON AREA (PARCEL "V") IN THE
 VILLAGE AT WATERSIDE CROSSINGS SOUTH NO 2 PHASE 7 AS SHOWN BY THE
 RECORDED PLAN IN VOL. 88 OF MAPS, PG. 30-31 OF LORAIN COUNTY RECORDS
 AND PART OF ORIGINAL AVON TWP. SECTION 8, CITY OF AVON LAKE, LORAIN COUNTY, OH

**THE HENRY G. REITZ
 ENGINEERING COMPANY**
 4214 ROCKY RIVER DRIVE
 CLEVELAND, OHIO 44135
 PHONE: (216) 251-3033