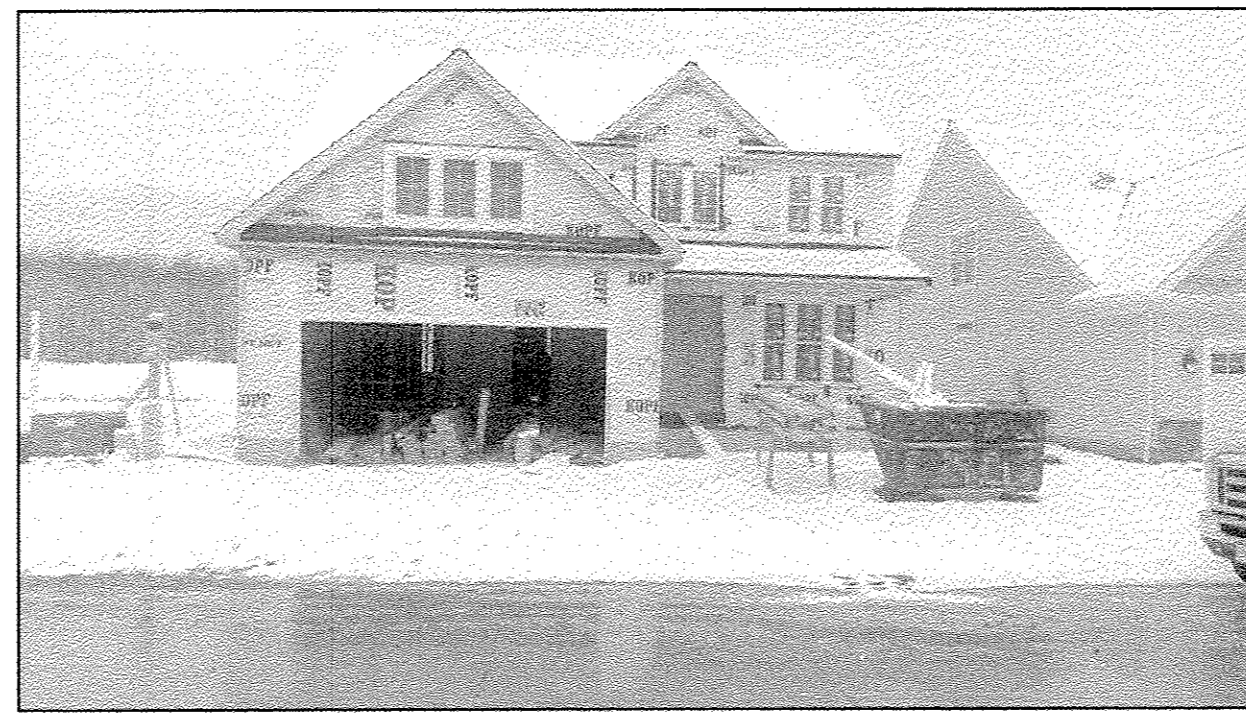
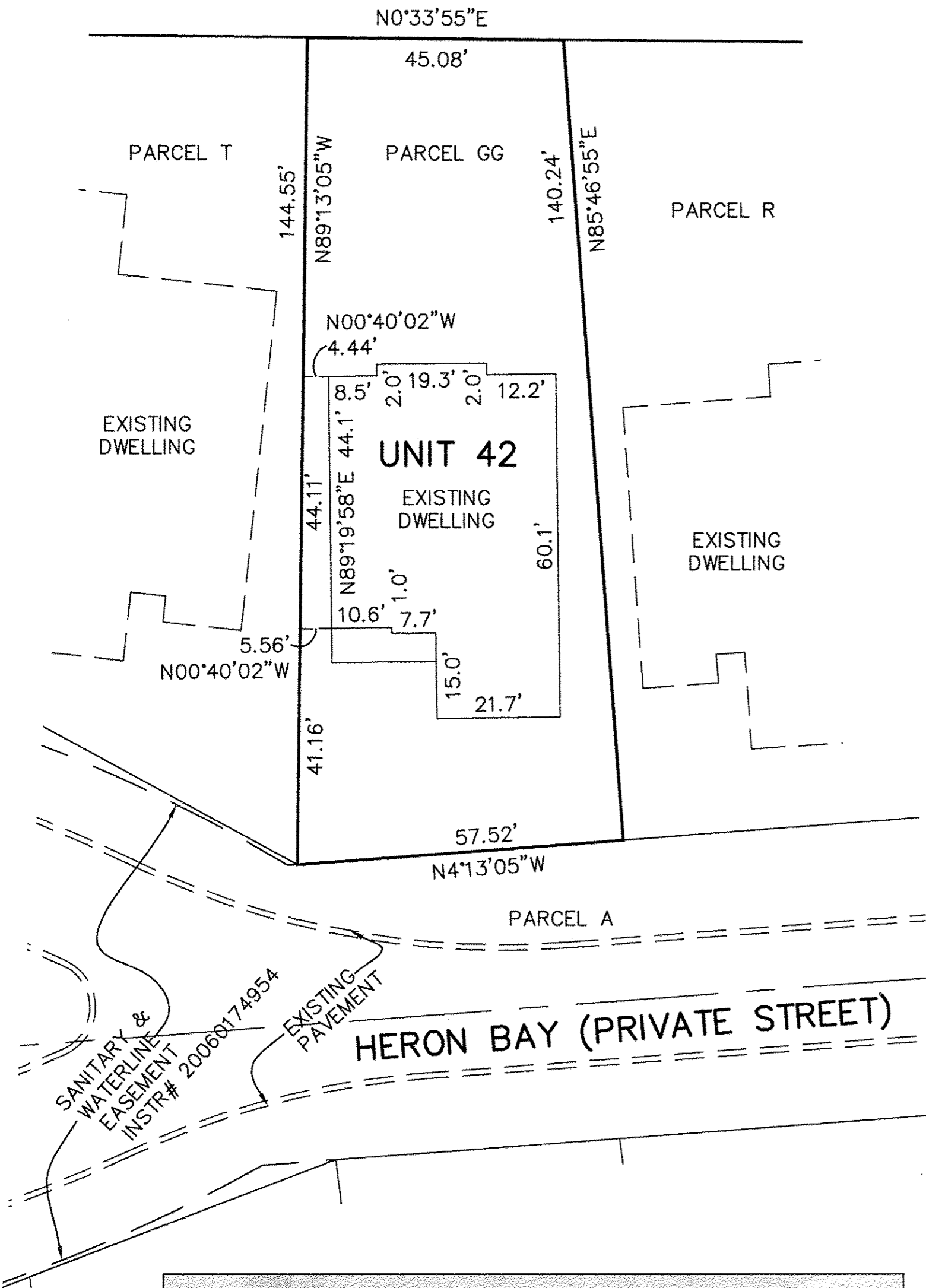
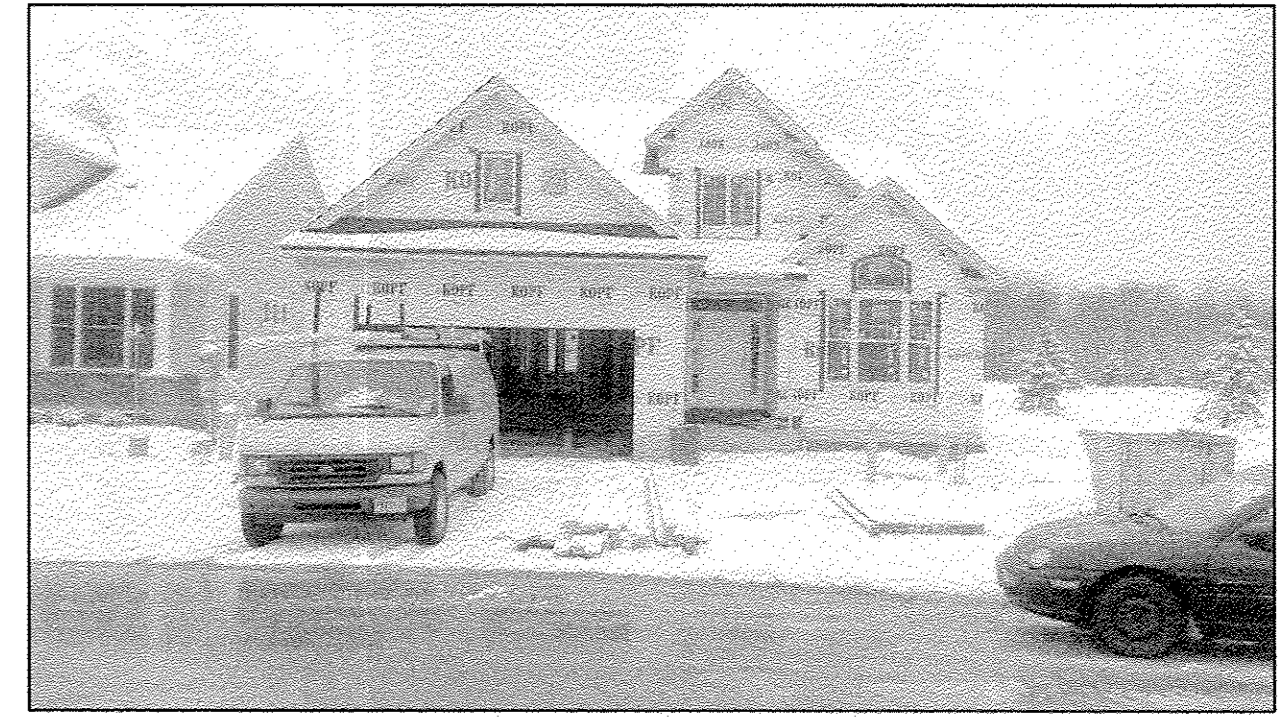


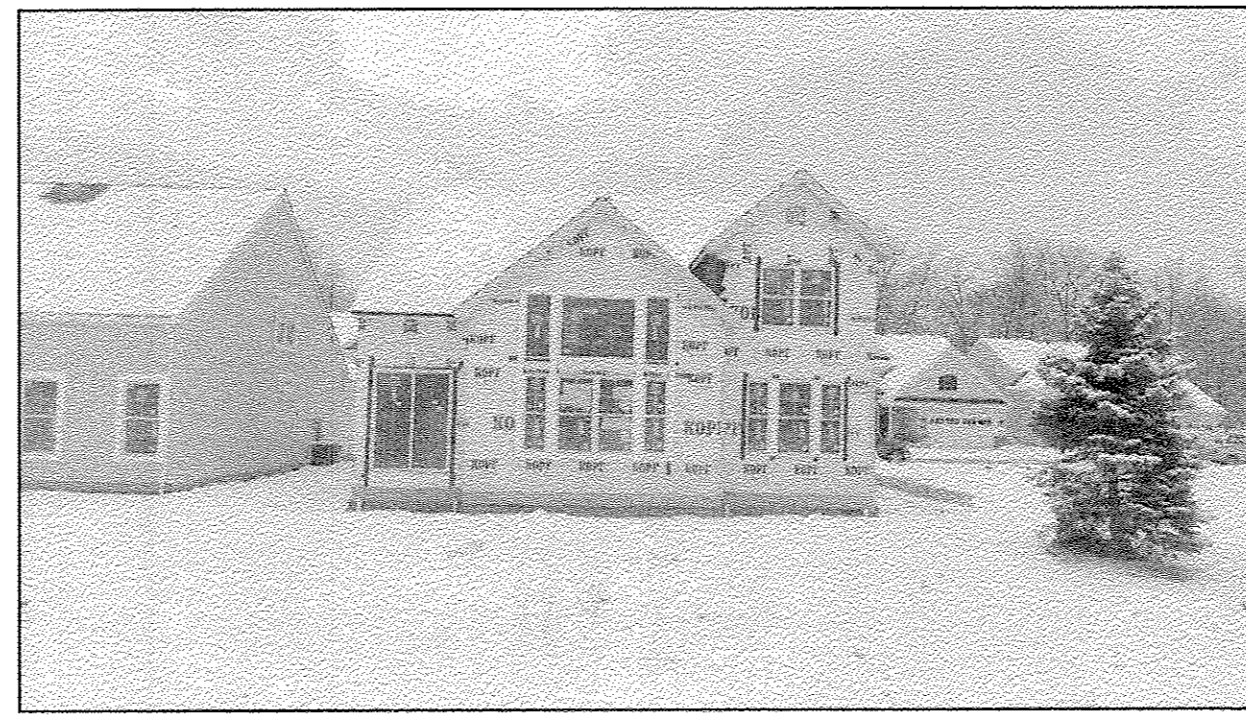
04-00-020-101-222
LEGACY POINTE LTD.
INST. #20160575106



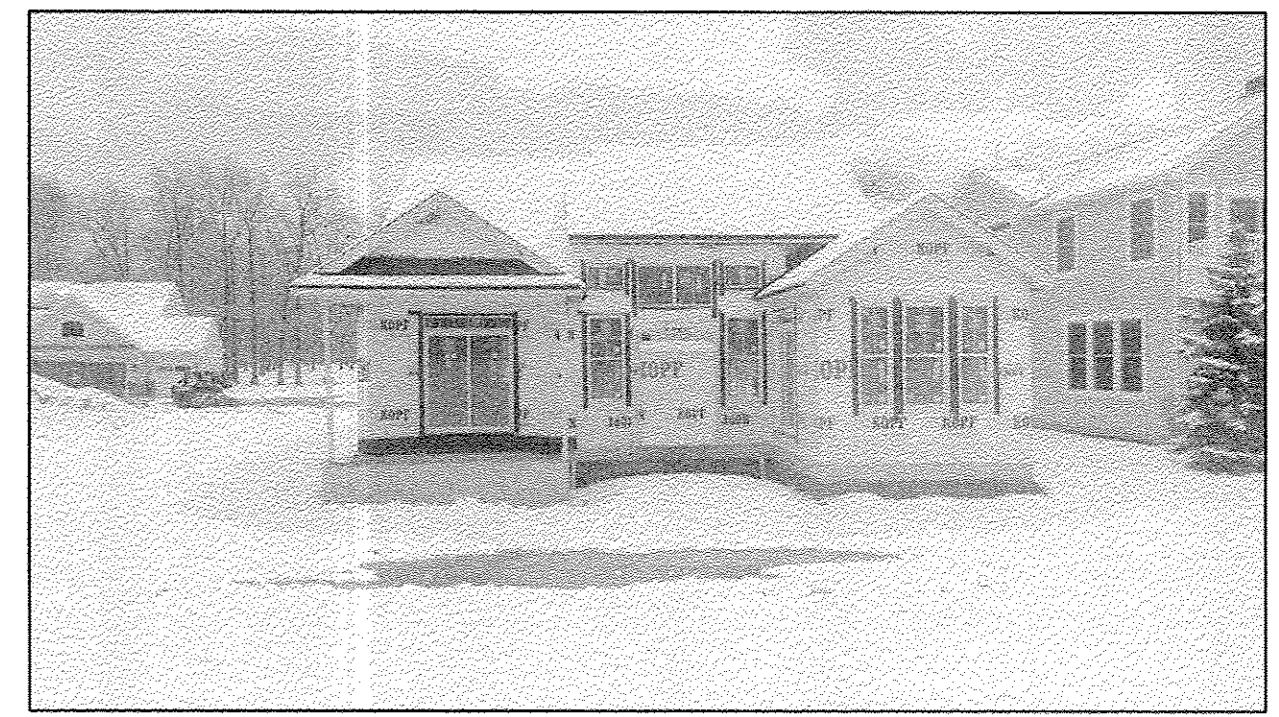
UNIT #44 FRONT VIEW



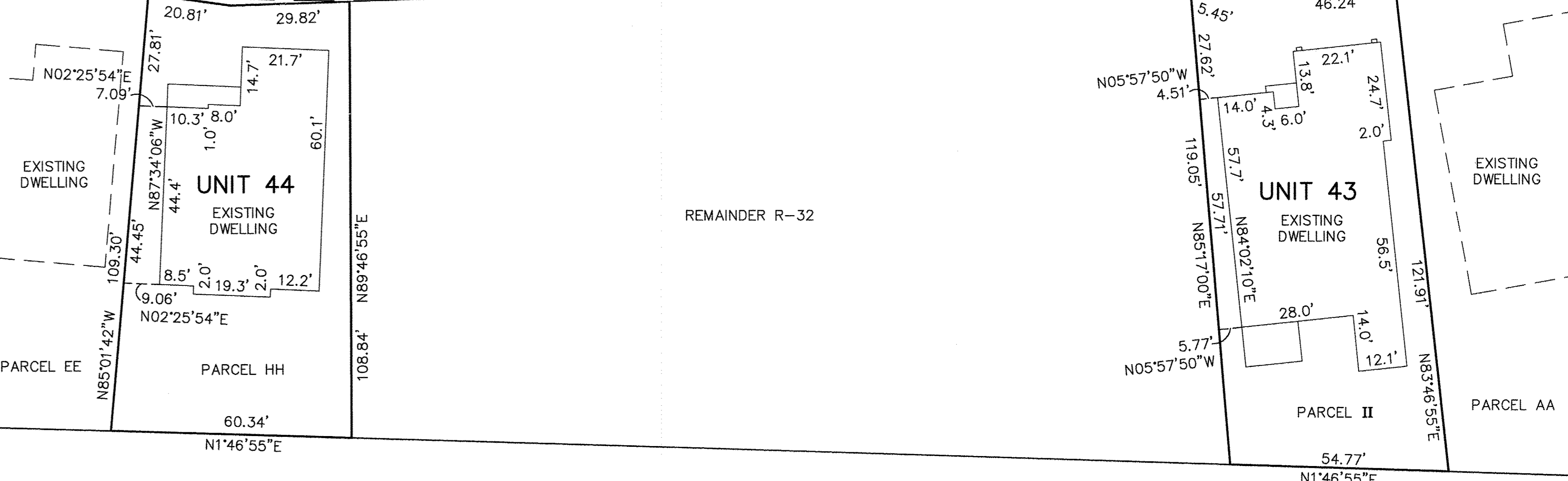
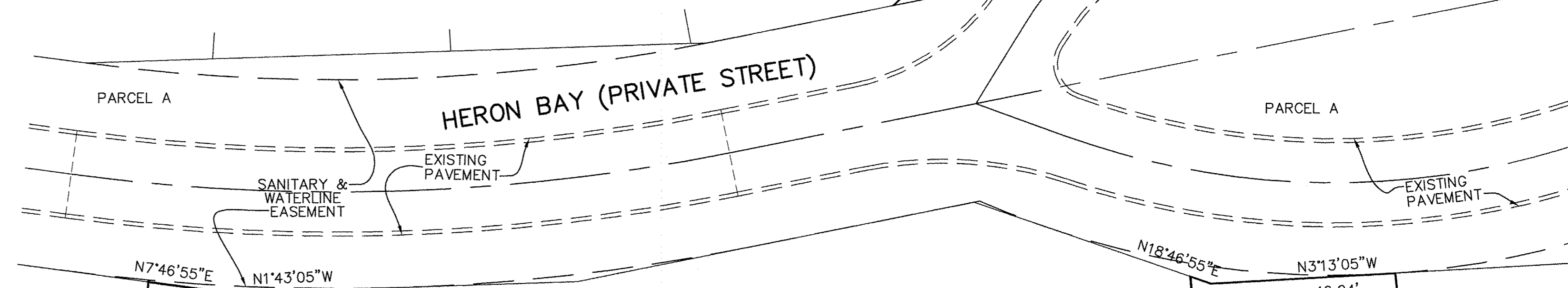
UNIT #43 FRONT VIEW



UNIT #44 REAR VIEW

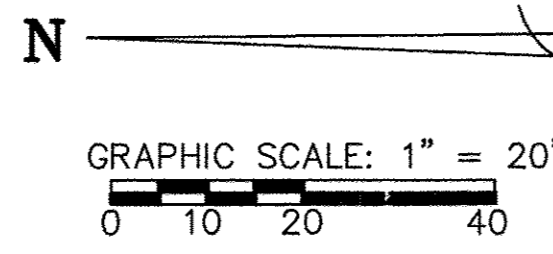


UNIT #43 REAR VIEW



REMAINDER R-32

BLOCK "O"
LEGACY POINTE
SUBDIVISION NO. 5
VOL. 92, PAGES 27-30



NOTES:
LIMITED COMMON AREAS INCLUDE THE LAND WITHIN 3 FEET FROM THE FOUNDATION AND PATIOS/DECKS/PORCHES/SUNROOMS OF EACH UNIT.
ALL ANGLES BETWEEN WALLS ARE 90° UNLESS OTHERWISE SPECIFIED



UNIT #42 FRONT VIEW



UNIT #42 REAR VIEW

REVISIONS		

**LEGACY POINTE
CONDOMINIUM NO. 6 PH 14**
BEING PART OF BLOCK "P" IN THE LEGACY POINTE SUBDIVISION NO. 5 AS RECORDED IN VOL. 92 OF PLATS, PGS. 27-30 OF LORAIN COUNTY RECORDS, OF PART OF ORIGINAL AVON TWP. SECTION 17 CITY OF AVON LAKE, COUNTY OF LORAIN, OHIO

**THE HENRY G. REITZ
ENGINEERING COMPANY**
4214 ROCKY RIVER DRIVE
CLEVELAND, OHIO 44135
PHONE: (216) 251-3033

2
2
MARCH
2016