

CERTIFICATION
 THIS IS TO CERTIFY THAT THE ATTACHED DRAWINGS CORRECTLY REPRESENT THE BUILDINGS AS CONSTRUCTED AND THAT THERE ARE NO ENCROACHMENTS ON ADJUTING PROPERTIES.

J.T.S. 11/13/15
 JAMES T. SAYLER, P.E.
 PROFESSIONAL ENGINEER NO. E-52385

J.T.S. 11/13/15
 JAMES T. SAYLER
 PROFESSIONAL SURVEYOR NO. S-7425

NOTE
 LIMITED COMMON ELEMENTS INCLUDE THE LAND WITHIN 3 FEET FROM THE FOUNDATION AND PATIOS/DECKS/PORCHES/SUNROOMS OF EACH UNIT, AND LAND 12 FEET OFF OF MAIN REAR WALL FOR CONSTRUCTION OF A DECK OR PATIO

ACREAGE BREAKDOWN

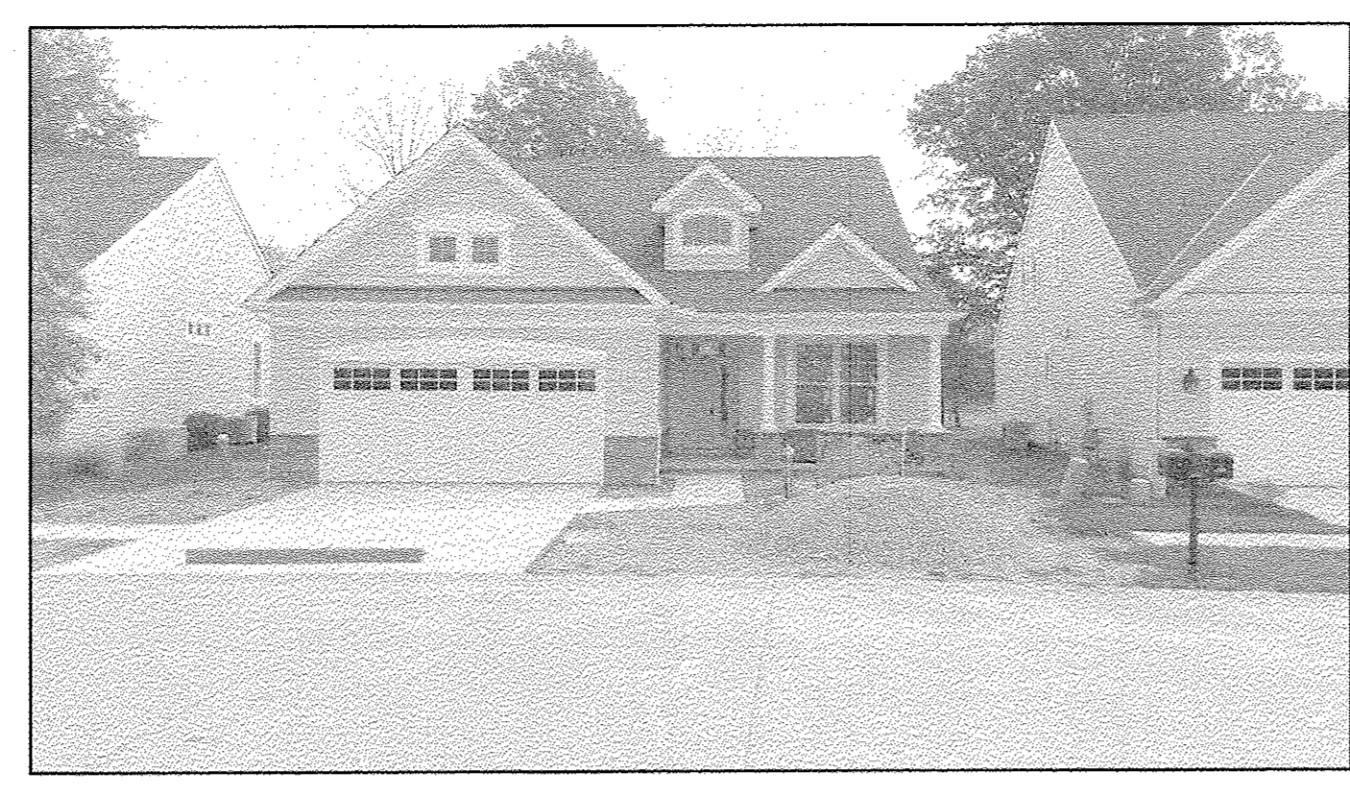
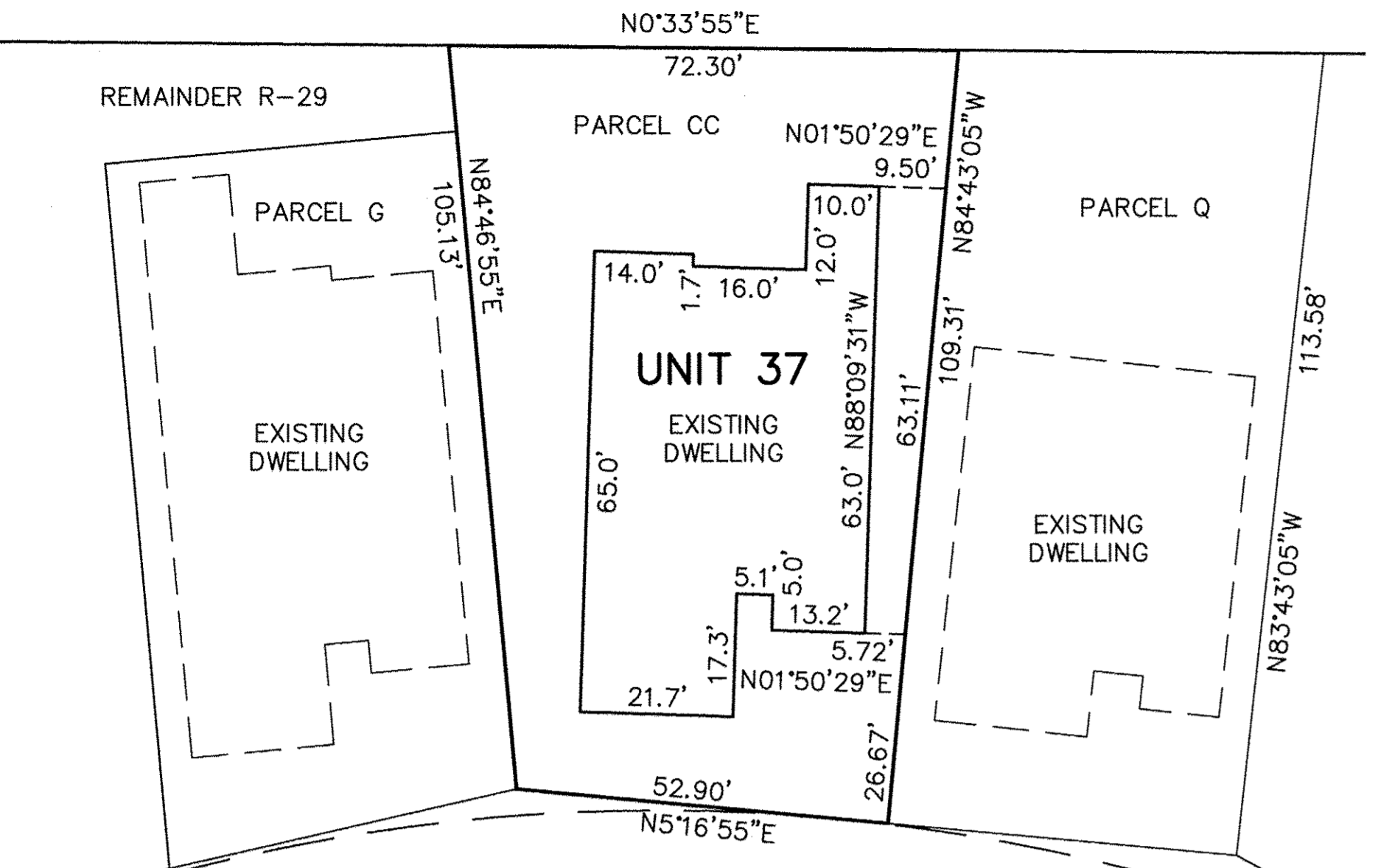
PHASE 1	175,552 SQ. FT.	4.0301 ACRES
PHASE 2 (2 PARCELS)	18,041 SQ. FT.	0.4142 ACRES
PHASE 3 (1 PARCEL)	7,699 SQ. FT.	0.1767 ACRES
PHASE 4 (2 PARCELS)	12,780 SQ. FT.	0.2934 ACRES
PHASE 5 (4 PARCELS)	42,274 SQ. FT.	0.9705 ACRES
PHASE 6 (2 PARCELS)	17,633 SQ. FT.	0.4048 ACRES
PHASE 7 (1 PARCEL)	8,089 SQ. FT.	0.1857 ACRES
PHASE 8 (3 PARCELS)	32,898 SQ. FT.	0.7553 ACRES
PHASE 9 (3 PARCELS)	28,291 SQ. FT.	0.6495 ACRES
PHASE 10 (3 PARCELS)	20,347 SQ. FT.	0.4671 ACRES
PHASE 11 (5 PARCELS)	46,905 SQ. FT.	1.0768 ACRES
PHASE 12 (1 PARCEL)	7,190 SQ. FT.	0.1651 ACRES
PHASE 13 (5 PARCEL)	35,450 SQ. FT.	0.8138 ACRES
REMAINDER PARCELS	66,985 SQ. FT.	1.5378 ACRES
EXPANSION PARCEL REM.	91,676 SQ. FT.	2.1046 ACRES
TOTAL SITE	611,811 SQ. FT.	14.0453 ACRES

SITE MAP

WALKER ROAD
 JAYCOX ROAD
 AVON BELDEN ROAD S.R. B3
 N.Y.C. & ST. LOUIS RAILROAD

LEGACY POINTE CONDOMINIUM NO. 6 PH 13
 BEING PART OF BLOCK "P" IN THE LEGACY POINTE SUBDIVISION NO. 5 AS RECORDED IN VOL. 92 OF PLATS, PGS. 27-30 OF LORAIN COUNTY RECORDS, OF PART OF ORIGINAL AVON TWP. SECTION 17 CITY OF AVON LAKE, COUNTY OF LORAIN, OHIO

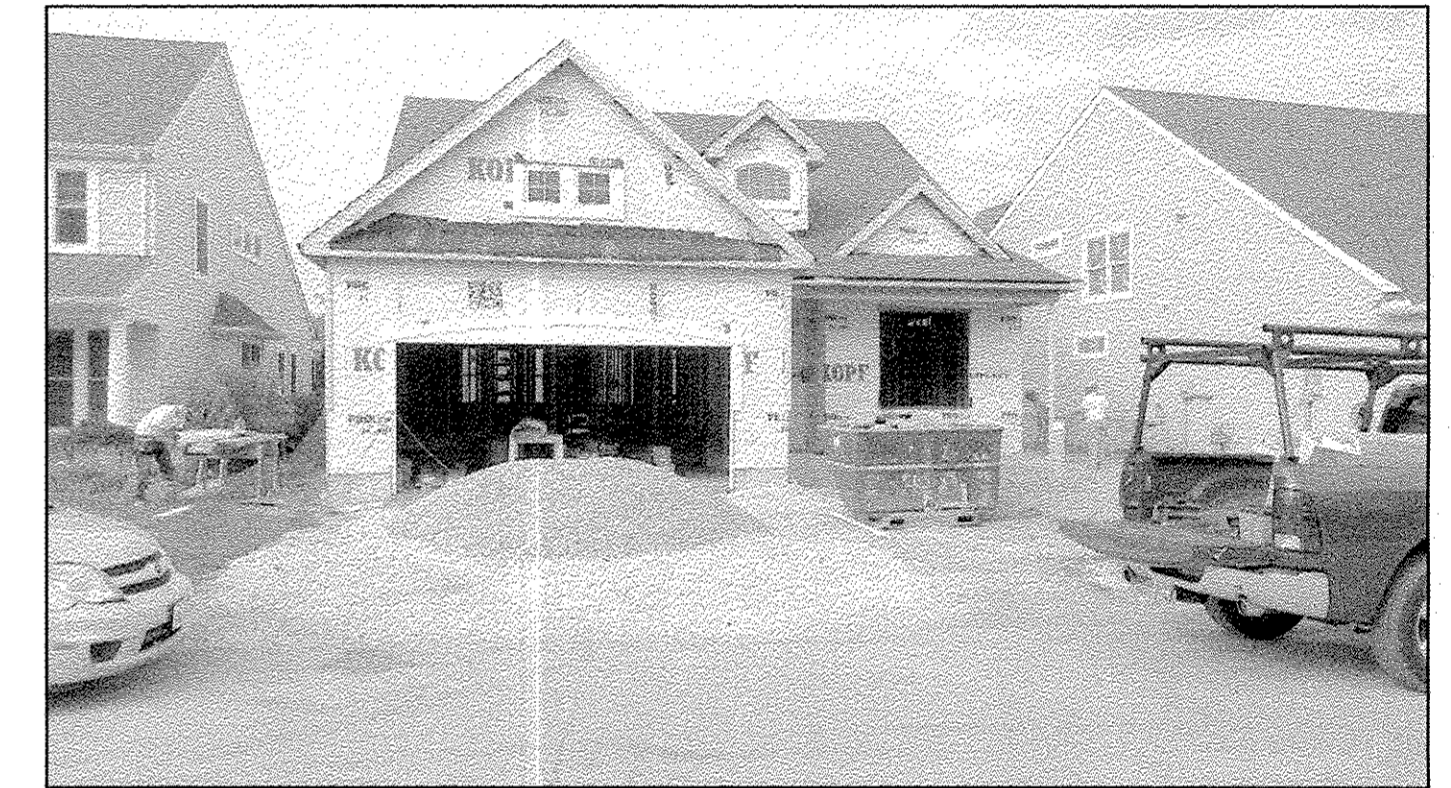
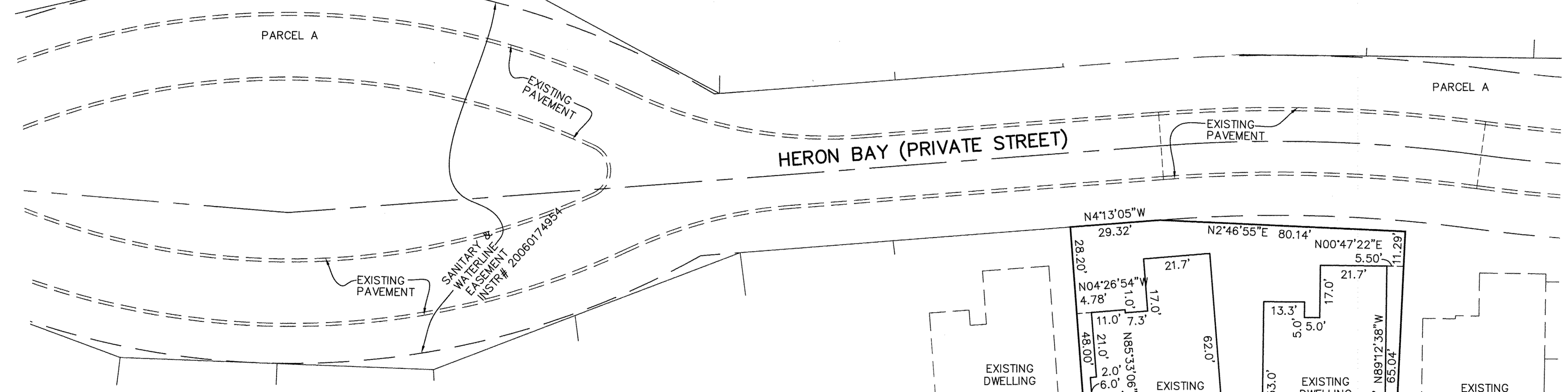
THE HENRY G. REITZ ENGINEERING COMPANY
 4214 ROCKY RIVER DRIVE
 CLEVELAND, OHIO 44135
 PHONE: (216) 251-3033



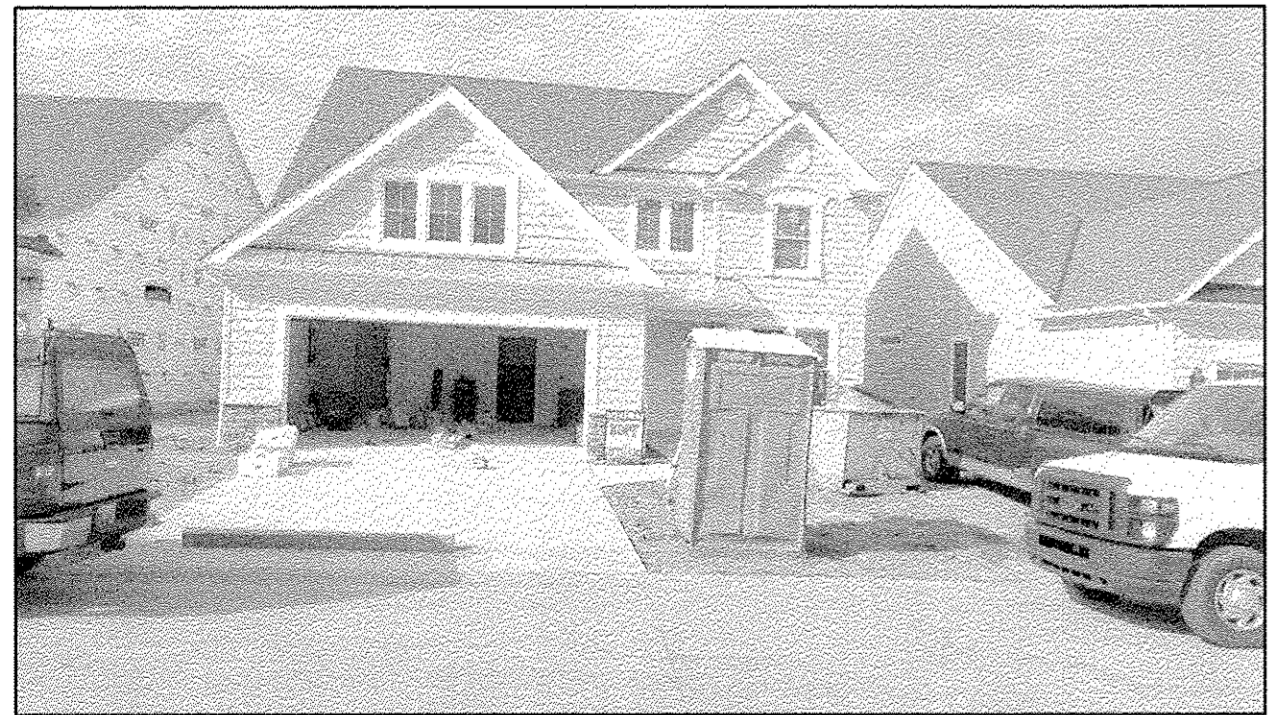
UNIT #37 FRONT VIEW



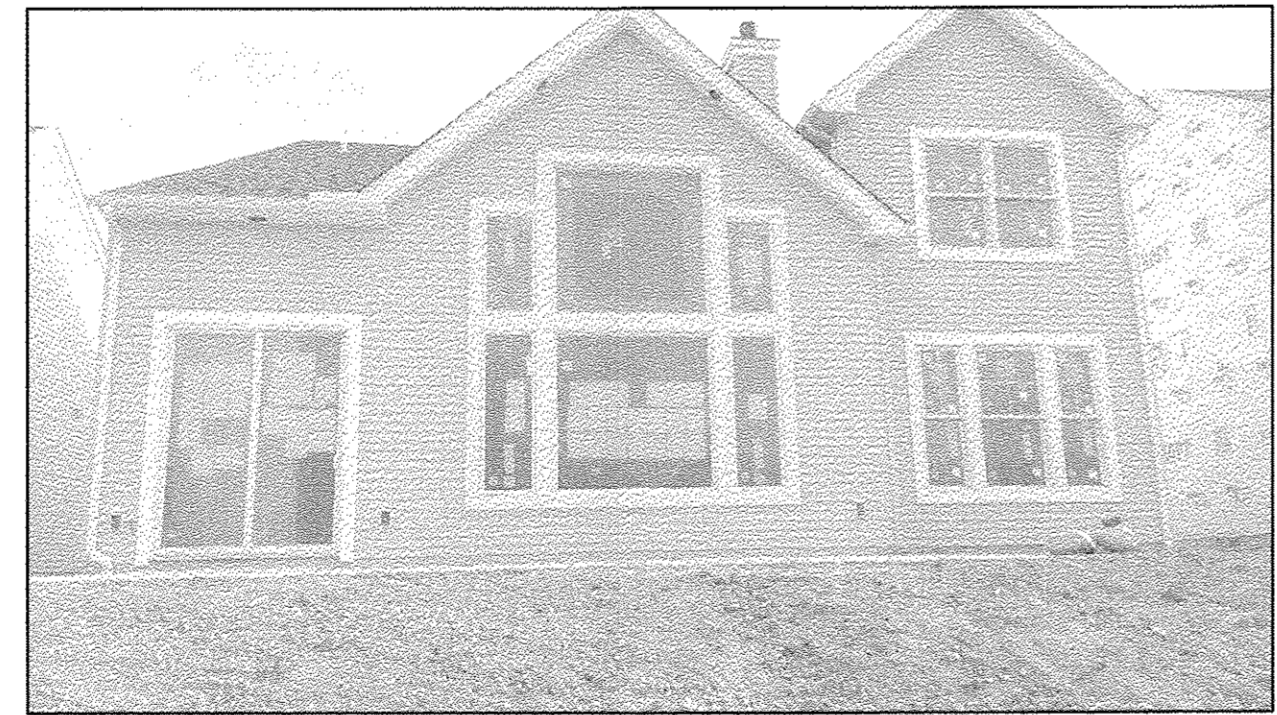
UNIT #37 REAR VIEW



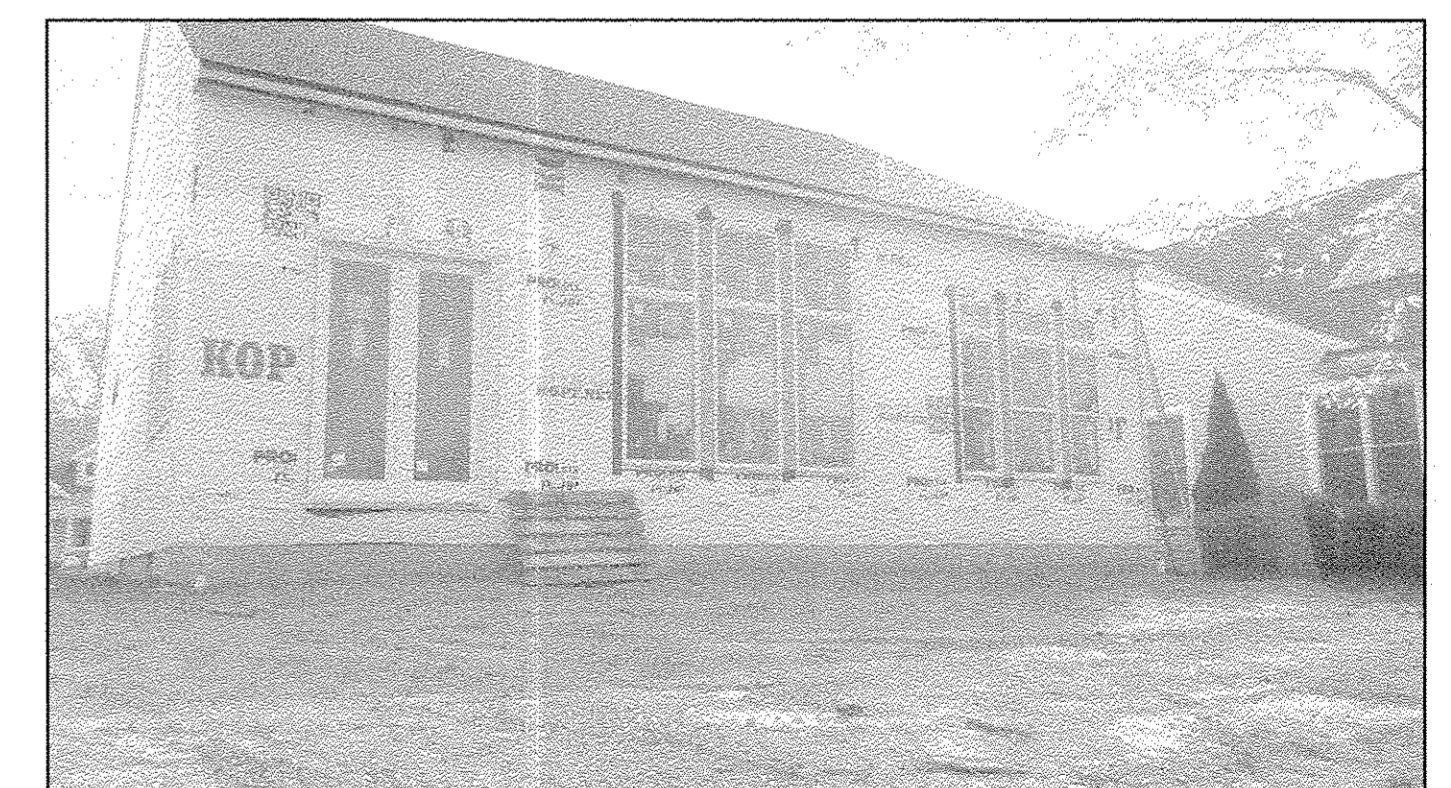
UNIT #40 FRONT VIEW



UNIT #41 FRONT VIEW



UNIT #41 REAR VIEW



UNIT #40 REAR VIEW

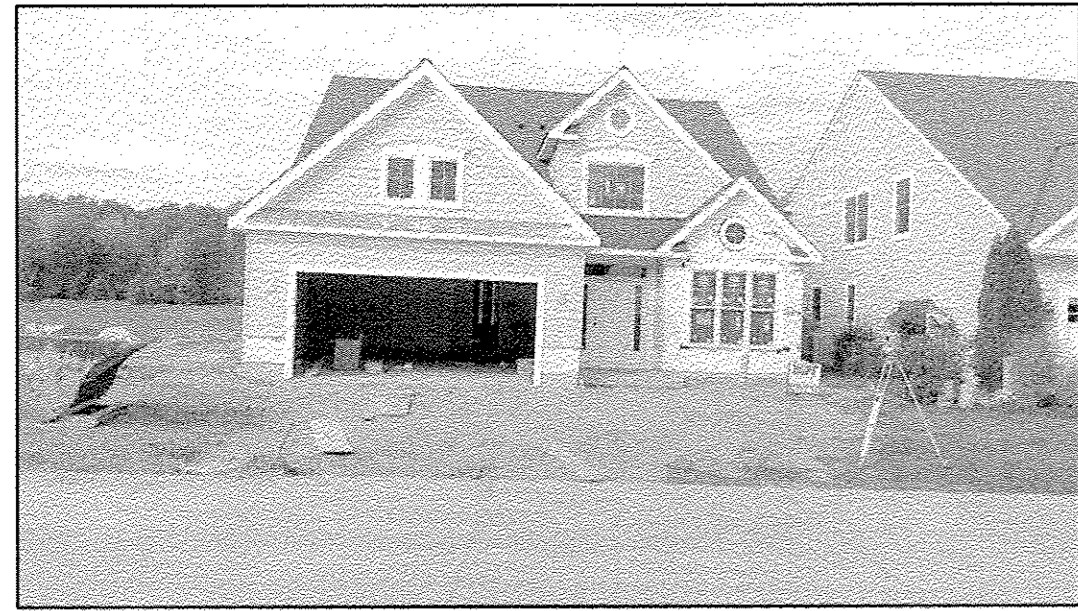
BLOCK "O"
 LEGACY POINTE
 SUBDIVISION NO. 5
 VOL. 92, PAGES 27-30

NOTES:
 LIMITED COMMON AREAS INCLUDE THE LAND WITHIN 3 FEET FROM THE FOUNDATION AND PATIOS/DECKS/PORCHES/SUNROOMS OF EACH UNIT.
 ALL ANGLES BETWEEN WALLS ARE 90° UNLESS OTHERWISE SPECIFIED

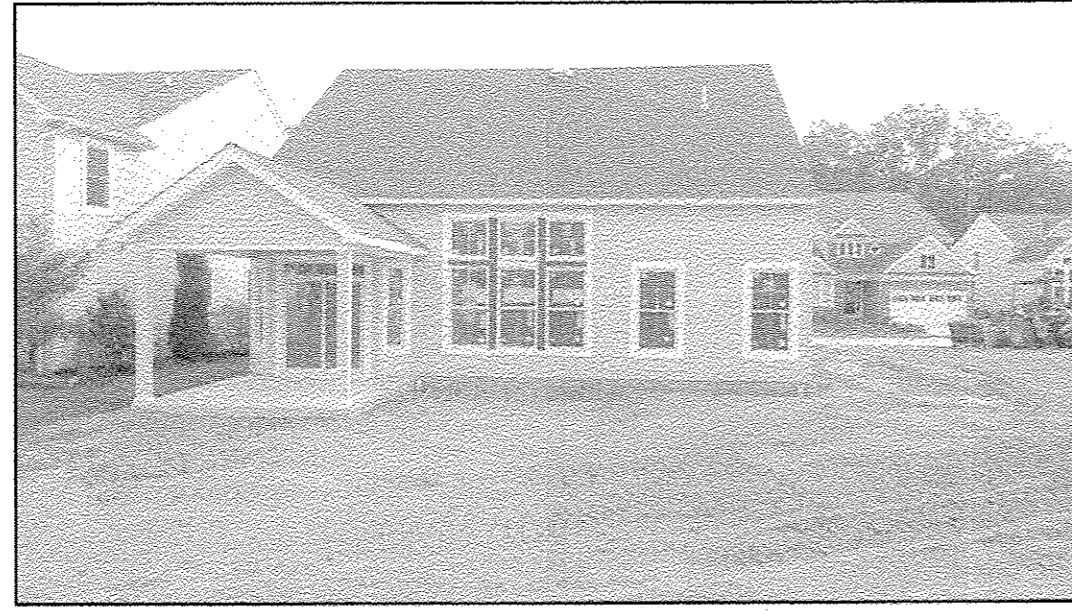
REVISIONS		

LEGACY POINTE
CONDOMINIUM NO. 6 PH 13
 BEING PART OF BLOCK "P" IN THE LEGACY POINTE SUBDIVISION NO. 5 AS RECORDED IN VOL. 92 OF PLATS, PGS. 27-30 OF LORAIN COUNTY RECORDS, OF PART OF ORIGINAL AVON TWP, SECTION 17 CITY OF AVON LAKE, COUNTY OF LORAIN, OHIO

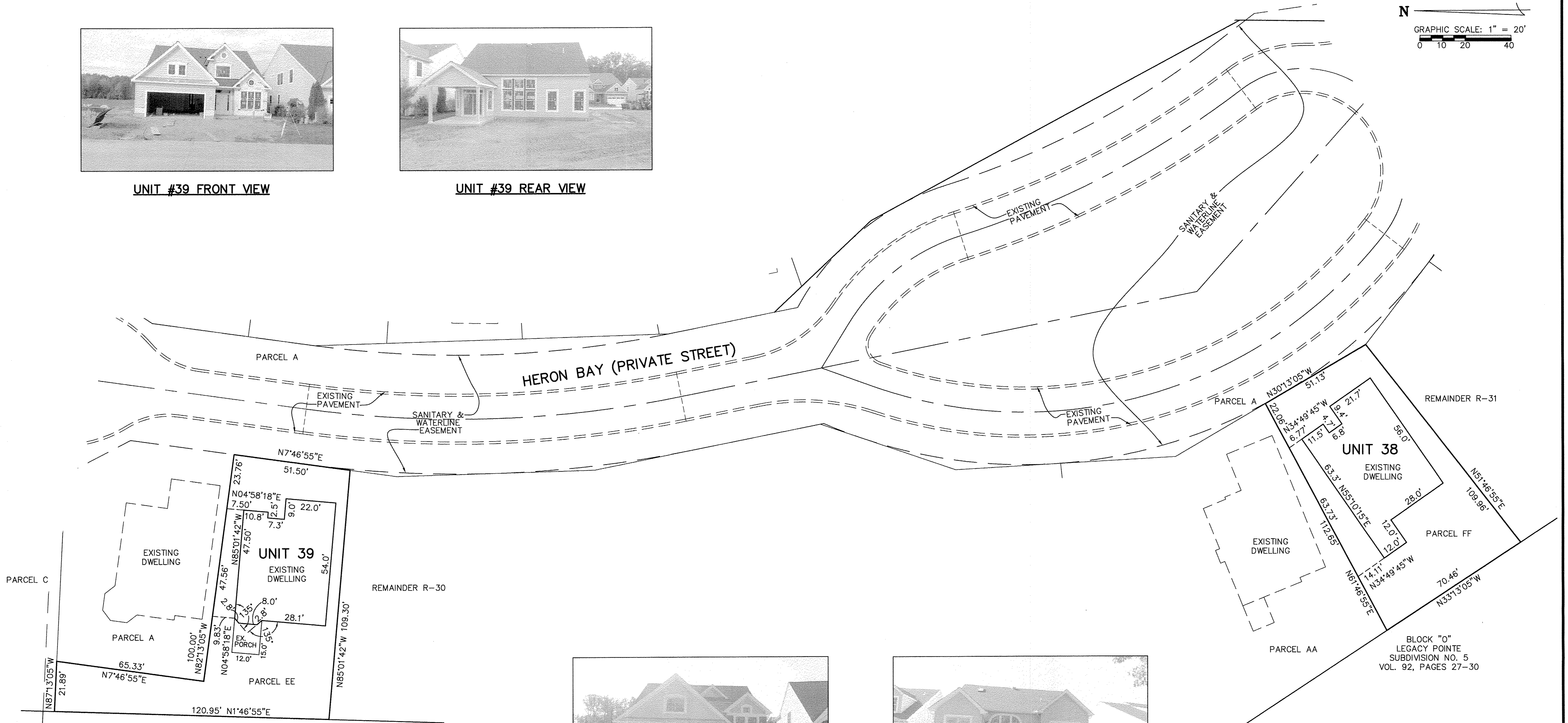
THE HENRY G. REITZ
ENGINEERING COMPANY
 4214 ROCKY RIVER DRIVE
 CLEVELAND, OHIO 44135
 PHONE: (216) 251-3033



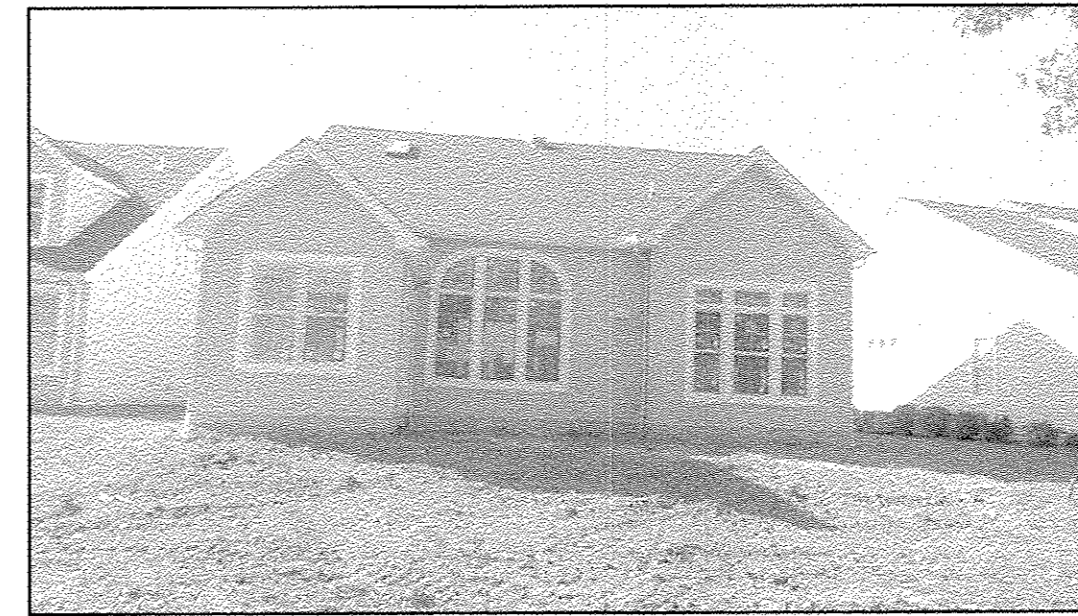
UNIT #39 FRONT VIEW



UNIT #39 REAR VIEW



UNIT #38 FRONT VIEW



UNIT #38 REAR VIEW

NOTES:

LIMITED COMMON AREAS INCLUDE THE LAND WITHIN 3 FEET FROM THE FOUNDATION AND PATIOS/DECKS/PORCHES/SUNROOMS OF EACH UNIT.

ALL ANGLES BETWEEN WALLS ARE 90° UNLESS OTHERWISE SPECIFIED

REVISIONS		

**LEGACY POINTE
 CONDOMINIUM NO. 6 PH 13**
 BEING PART OF BLOCK "P" IN THE LEGACY POINTE SUBDIVISION NO. 5 AS RECORDED IN VOL. 92 OF PLATS, PGS. 27-30 OF LORAIN COUNTY RECORDS, OF PART OF ORIGINAL AVON TWP. SECTION 17 CITY OF AVON LAKE, COUNTY OF LORAIN, OHIO

**THE HENRY G. REITZ
 ENGINEERING COMPANY**
 4214 ROCKY RIVER DRIVE
 CLEVELAND, OHIO 44135
 PHONE: (216) 251-3033

3 3
OCTOBER 2015