

FIDELITY NATIONAL TITLE COMPANY, LLC  
5340 MEADOW LANE  
SHEFFIELD VILLAGE, OH 44054  
Plan Vol. 101  
Pgs 1, 2

NOTE:  
LIMITED COMMON AREAS  
INCLUDE THE LAND WITHIN 3  
FEET FROM THE FOUNDATION  
AND PATIOS/DECKS/  
PORCHES/SUNROOMS  
OF EACH UNIT.

**TRANSFERRED**  
IN COMPLIANCE WITH SEC. 319-202  
OHIO REV. CODE  
MAY 11 2015  
See Excerpt  
J. CRAIG SNODGRASS, CPA, CGFM  
LORAIN COUNTY AUDITOR

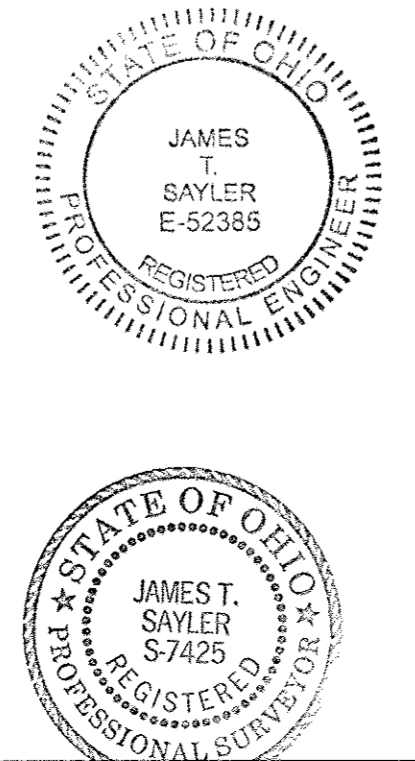
CONDOMINIUM PHASE ACREAGES:

PHASE 1, 1 PARCEL	= 2.6402 AC.
PHASE 2, 6 PARCELS	= 0.9492 AC.
PHASE 3, 3 PARCELS	= 0.7361 AC.
PHASE 4, 4 PARCELS	= 2.1426 AC.
PHASE 5, 1 PARCEL	= 0.3834 AC.
PHASE 6, 3 PARCELS	= 0.7185 AC.
PHASE 7, 3 PARCELS	= 2.2202 AC.
PHASE 8, 3 PARCELS	= 0.4766 AC.
PHASE 9, 1 PARCEL	= 0.1673 AC.
PHASE 10, 2 PARCELS	= 0.4937 AC.
PHASE 11, 1 PARCEL	= 0.1605 AC.
PHASE 12, 2 PARCELS	= 0.4148 AC.
PHASE 13, 2 PARCELS	= 0.3595 AC.
PHASE 14, 2 PARCELS	= 0.3009 AC.
PHASE 15, 2 PARCELS	= 0.4231 AC.
PHASE 16, 3 PARCELS	= 0.5645 AC.
TOTAL TO DATE	= 13.1511 AC.
SUM OF REMAINDERS	= 1.0234 AC.
TOTAL PROJECT	= 14.1745 AC.

**CERTIFICATION:**  
THIS IS TO CERTIFY THAT THE ATTACHED  
DRAWINGS CORRECTLY REPRESENT THE  
BUILDINGS AS CONSTRUCTED AND THAT  
THERE ARE NO ENCROACHMENTS ON  
ADJUTING PROPERTIES NOT PART OF  
THIS CONDOMINIUM.

JAMES T. SAYLER, P.E.  
PROFESSIONAL ENGINEER NO. E-52385

JAMES T. SAYLER  
PROFESSIONAL SURVEYOR NO. S-7425



Recorded: 03/16/2015 at 02:51:08 PM  
Lorain County, Ohio  
Lorain County Recorder  
File: 2015-0544205

REVISIONS	DATE	DESCRIPTION
1	5/05/2015	REVISED PER COUNTY TAX MAP DEPARTMENT COMMENTS

**VILLAGE AT WATERSIDE CROSSINGS  
SOUTH NO. 2 CONDOMINIUM PH. 16**  
BEING A RE-SUBDIVISION OF PART OF COMMON AREA (PARCEL "V") IN THE  
VILLAGE AT WATERSIDE CROSSINGS SOUTH NO 2 PHASE 7 AS SHOWN BY THE  
RECORDED PLAN IN VOL. 88 OF MAPS, PG. 30-31 OF LORAIN COUNTY RECORDS  
AND PART OF ORIGINAL AVON TWP. SECTION 8, CITY OF AVON LAKE, LORAIN COUNTY, OH

**THE HENRY G. REITZ  
ENGINEERING COMPANY**  
4214 ROCKY RIVER DRIVE  
CLEVELAND, OHIO 44135  
PHONE: (216) 251-3033

1/2  
APRIL 2015

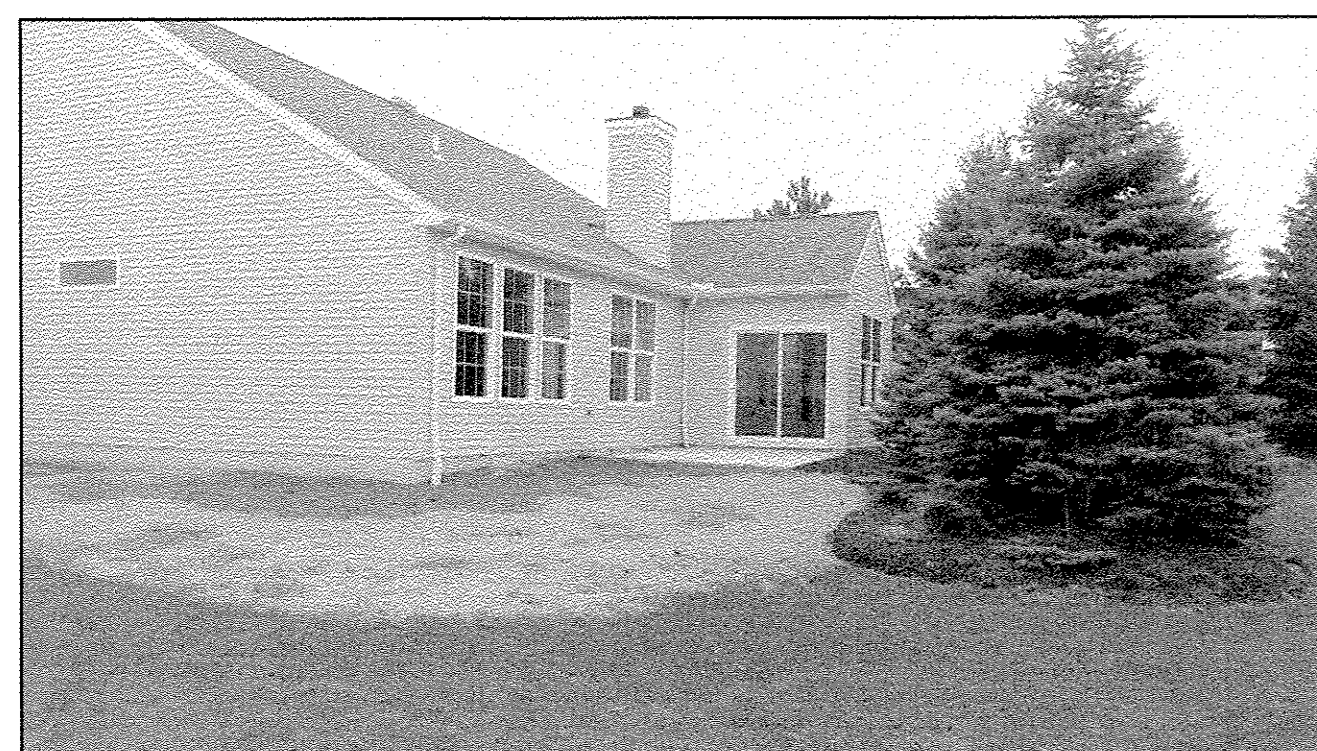
**LEGEND:**  
 (M) DENOTES 5/8" CAPPED (REITZ ENG.) IRON PIN IN MONUMENT BOX USED.  
 (O) DENOTES 5/8" CAPPED (REITZ ENG.) IRON PIN FD. & USED.  
 (D) DENOTES 1/4" DRILL HOLE USED

GRAPHIC SCALE: 1" = 40'  
0 20 40 80

UNIT 52 FRONT



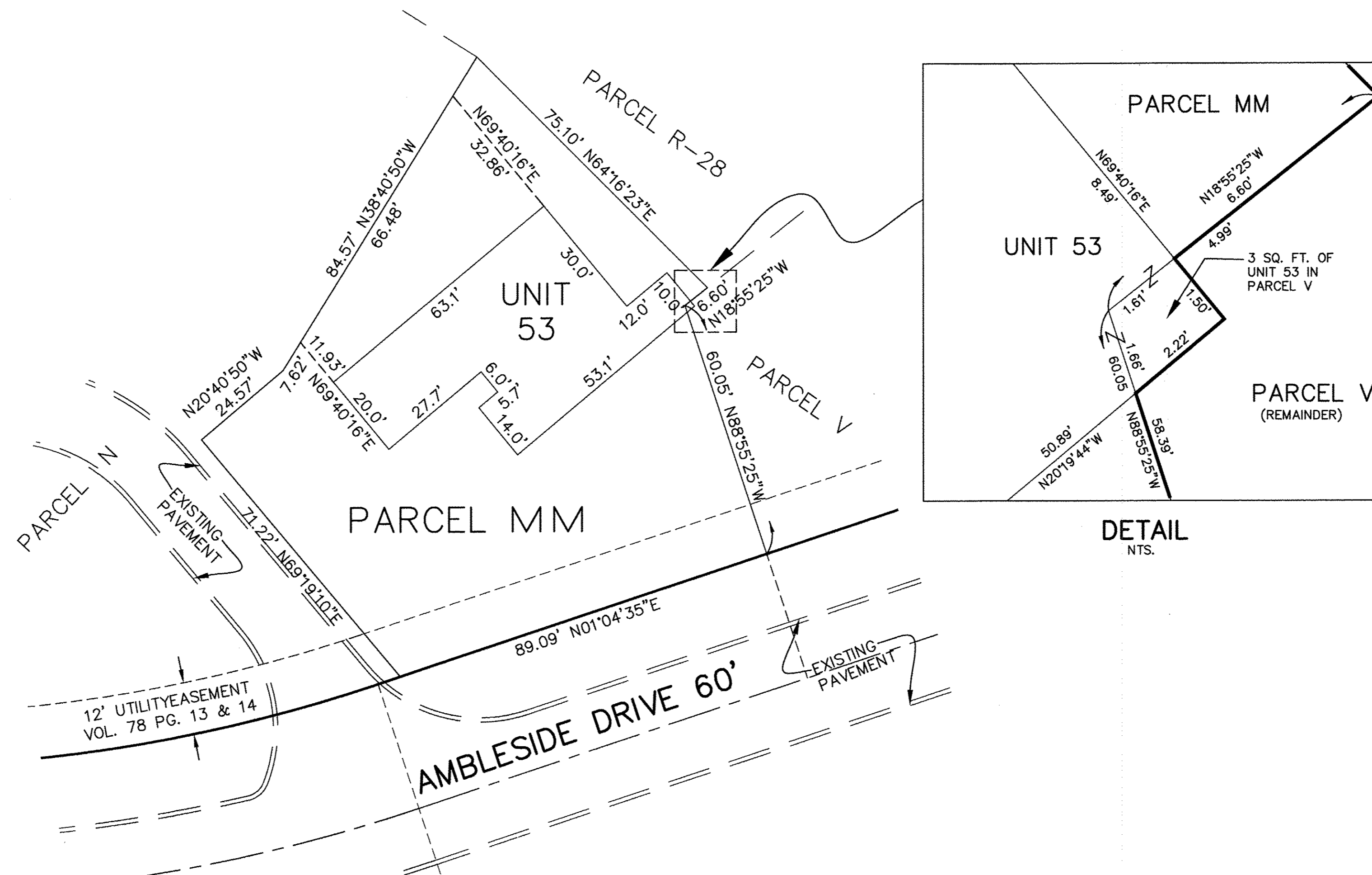
UNIT 52 REAR



UNIT 54 FRONT



UNIT 54 REAR

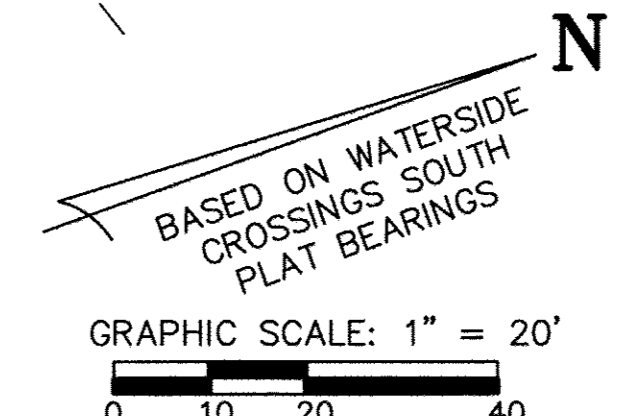
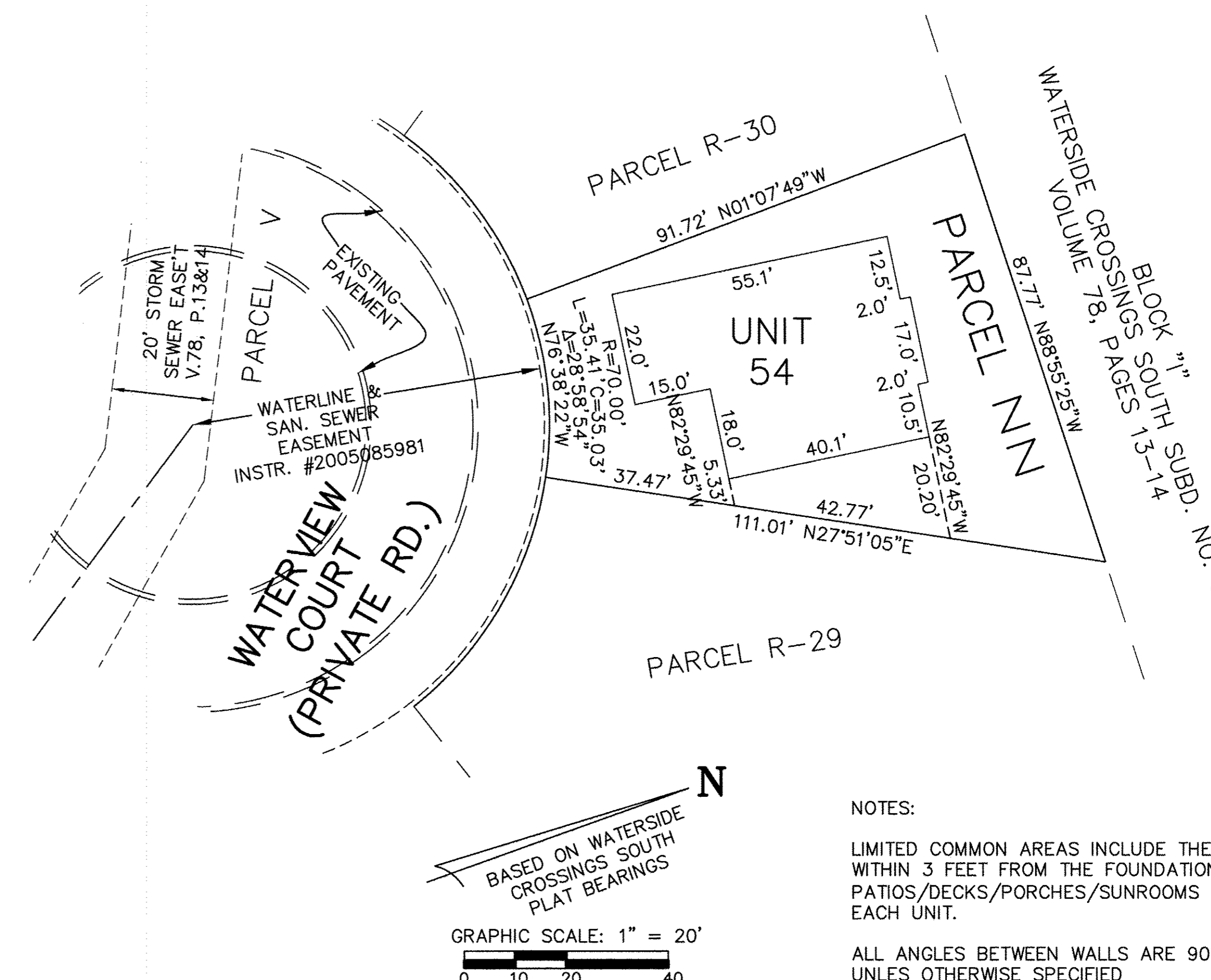


DETAIL  
NTS.

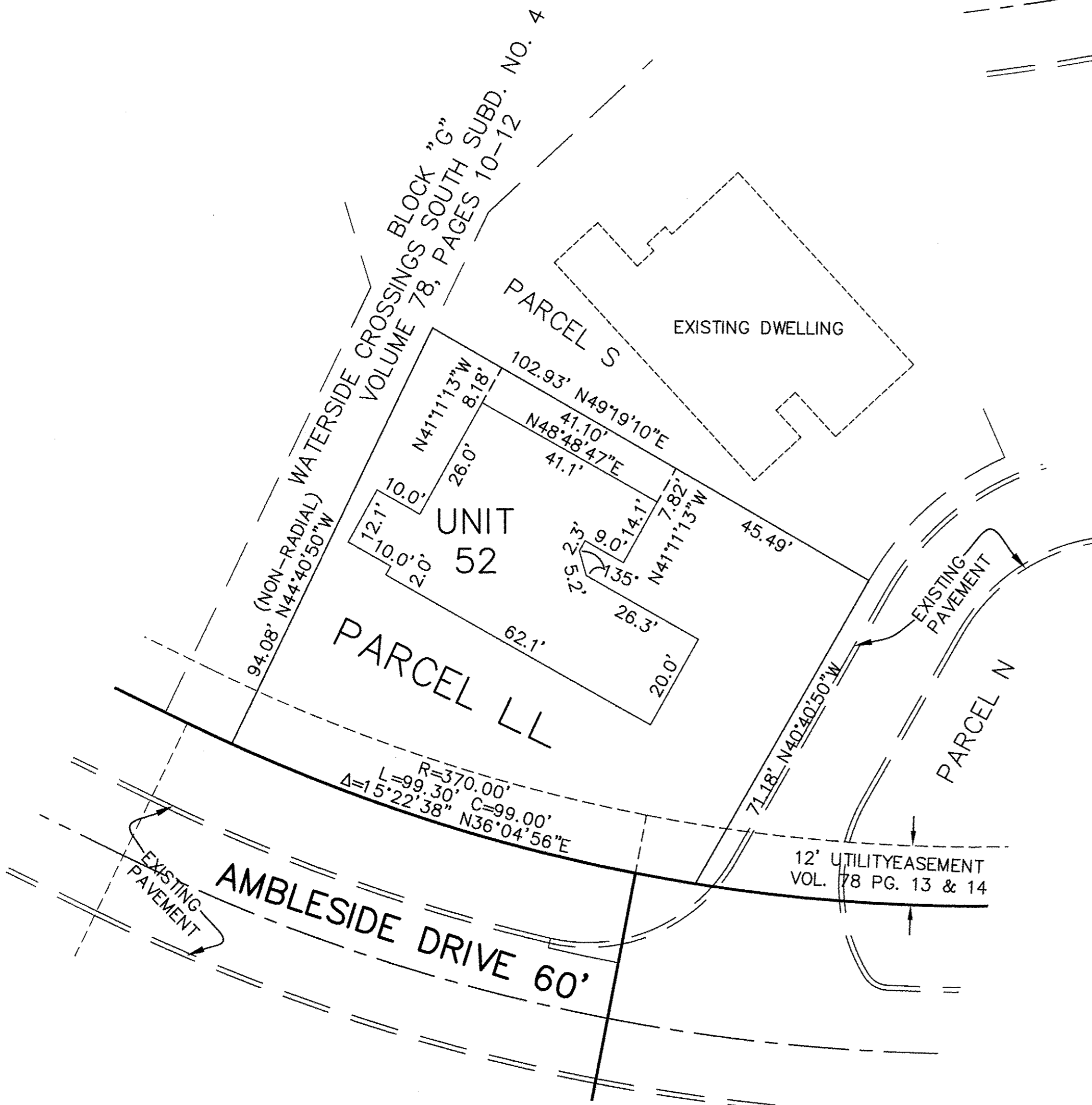
UNIT 53 FRONT



UNIT 53 REAR



NOTES:  
LIMITED COMMON AREAS INCLUDE THE LAND WITHIN 3 FEET FROM THE FOUNDATION AND PATIOS/DECKS/PORCHES/SUNROOMS OF EACH UNIT.  
ALL ANGLES BETWEEN WALLS ARE 90° UNLESS OTHERWISE SPECIFIED



REVISIONS	5/05/2015	REVISED PER COUNTY TAX MAP DEPARTMENT COMMENTS

**VILLAGE AT WATERSIDE CROSSINGS SOUTH NO. 2 CONDOMINIUM PH. 16**  
BEING A RE-SUBDIVISION OF PART OF COMMON AREA (PARCEL "V") IN THE VILLAGE AT WATERSIDE CROSSINGS SOUTH NO 2 PHASE 7 AS SHOWN BY THE RECORDED PLAN IN VOL. 88 OF MAPS, PG. 30-31 OF LORAIN COUNTY RECORDS AND PART OF ORIGINAL AVON TWP. SECTION 8, CITY OF AVON LAKE, LORAIN COUNTY, OH

**THE HENRY G. REITZ ENGINEERING COMPANY**  
4214 ROCKY RIVER DRIVE  
CLEVELAND, OHIO 44135  
PHONE: (216) 251-3033