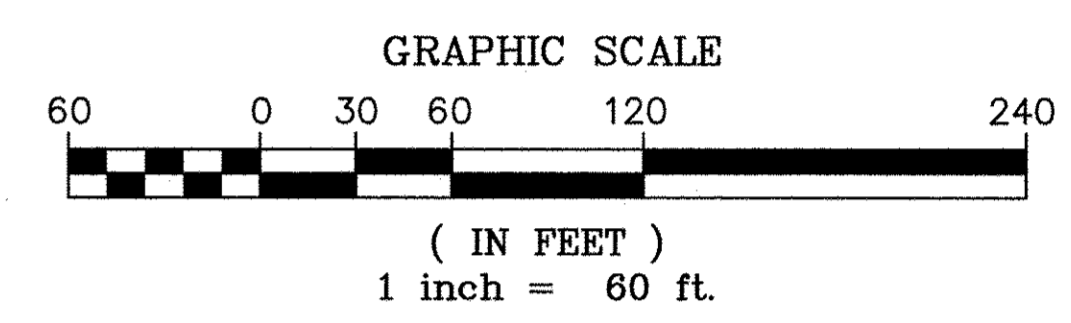
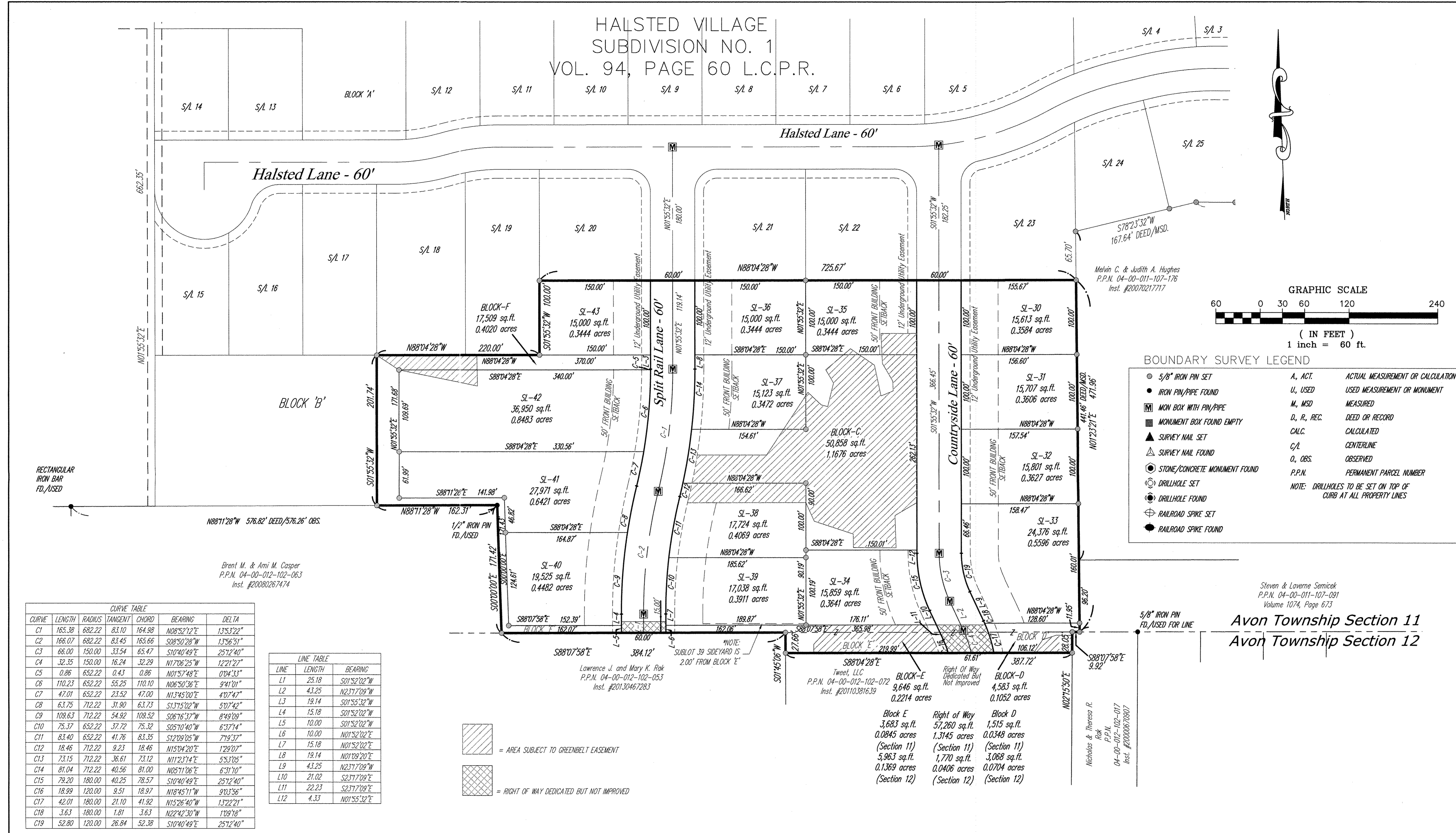


HALSTED VILLAGE
SUBDIVISION NO. 1
VOL. 94, PAGE 60 L.C.P.R.



BOUNDARY SURVEY LEGEND

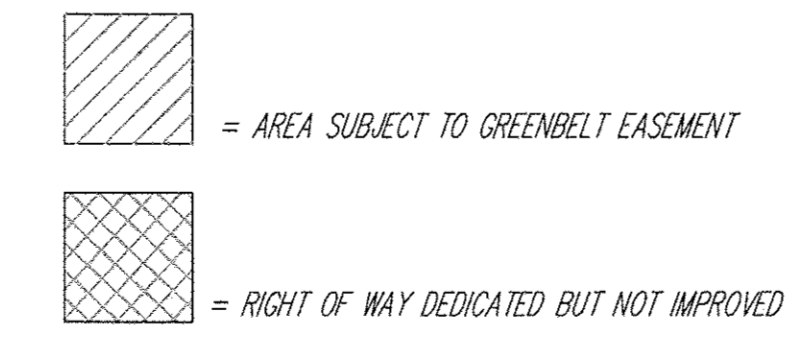
● 5/8" IRON PIN SET	A, ACT.	ACTUAL MEASUREMENT OR CALCULATION
● IRON PIN/PIPE FOUND	U, USED	USED MEASUREMENT OR MONUMENT
Ⓜ MON BOX WITH PIN/PIPE	M, MSD	MEASURED
Ⓜ MONUMENT BOX FOUND EMPTY	D, R, REC.	DEED OR RECORD
▲ SURVEY NAIL SET	CALC.	CALCULATED
▲ SURVEY NAIL FOUND	C/L	CENTERLINE
○ STONE/CONCRETE MONUMENT FOUND	O, OBS.	OBSERVED
⊙ DRILLHOLE SET	P.P.N.	PERMANENT PARCEL NUMBER
⊙ DRILLHOLE FOUND	NOTE:	DRILLHOLES TO BE SET ON TOP OF CURB AT ALL PROPERTY LINES
⊕ RAILROAD SPIKE SET		
⊕ RAILROAD SPIKE FOUND		

CURVE TABLE

CURVE	LENGTH	RADIUS	TANGENT	CHORD	BEARING	DELTA
C1	165.38	682.22	83.10	164.98	N08°52'12"E	135°3'22"
C2	166.07	682.22	83.45	165.66	S08°50'28"W	135°6'51"
C3	66.00	150.00	33.54	65.47	S10°40'49"E	25°12'40"
C4	32.35	150.00	16.24	32.29	N17°06'25"W	12°21'27"
C5	0.86	652.22	0.43	0.86	N01°57'48"E	0°04'33"
C6	110.23	652.22	55.25	110.10	S06°50'36"E	9°41'01"
C7	47.01	652.22	23.52	47.00	N13°45'00"E	4°07'47"
C8	63.75	712.22	31.90	63.73	S13°15'02"W	5°07'42"
C9	109.63	712.22	54.92	109.52	S06°16'37"W	8°49'09"
C10	75.37	652.22	37.72	75.32	S05°10'40"W	6°37'14"
C11	83.40	652.22	41.76	83.35	S12°09'05"W	7°19'37"
C12	18.46	712.22	9.23	18.46	N15°04'20"E	1°29'07"
C13	73.15	712.22	36.61	73.12	N11°23'14"E	5°53'05"
C14	81.04	712.22	40.56	81.00	N05°11'06"E	6°31'10"
C15	79.20	180.00	40.25	78.57	S10°40'49"E	25°12'40"
C16	18.99	120.00	9.51	18.97	N18°45'11"W	9°03'56"
C17	42.01	180.00	21.10	41.92	N15°26'40"W	13°22'21"
C18	3.63	180.00	1.81	3.63	N22°42'30"W	1°09'18"
C19	52.80	120.00	26.84	52.38	S10°40'49"E	25°12'40"

LINE TABLE

LINE	LENGTH	BEARING
L1	25.18	S01°52'02"W
L2	43.25	N23°17'09"W
L3	19.14	S01°55'32"W
L4	15.18	S01°52'02"W
L5	10.00	S01°52'02"W
L6	10.00	N01°52'02"E
L7	15.18	N01°52'02"E
L8	19.14	N01°09'20"E
L9	43.25	N23°17'09"W
L10	21.02	S23°17'09"E
L11	22.23	S23°17'09"E
L12	4.33	N01°55'32"E

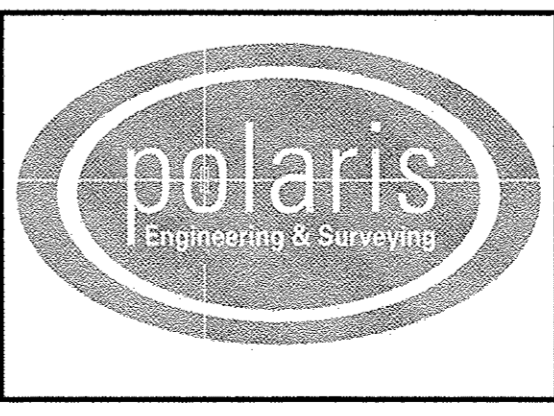


Steven & Laverne Semicak
P.P.N. 04-00-011-107-091
Volume 1074, Page 673
Avon Township Section 11
Avon Township Section 12

REV. No.	DATE	BY	CHK'D

DATE: 01/09/2015
SCALE: HOR. 1" = 60'
VERT. 1" = 60'
FOLDER: 11015\dwg\plate
FILENAME: record_plate
TAB: 02-plate
DRAWN:

Halsted Village
Subdivision No. 2
CITY OF AVON - LORAIN COUNTY - OHIO



POLARIS ENGINEERING & SURVEYING, INC.
34600 CHARDON ROAD - SUITE D
WILLOUGHBY HILLS, OHIO 44094
(440) 944-4433 (440) 944-3722 (Fax)
www.polaris-es.com

RECORD PLAT

CONTRACT No.	
14001	
SHEET	OF
02	02